



Bay Area Bluegrass Association



Bay Area Bluegrass Association



Bay Area Bluegrass Association



Bay Area Bluegrass Association

THE BABA BULLETIN

The Bay Area Bluegrass Association

5820 Misty Meadow, League City, TX 77573

March 2018

31 Years of Bluegrass

Volume 33, Issue 5



PRESIDENT'S MESSAGE

Well are you ready for some Bluegrass BABA style? Then you don't want to miss the March BABA show. Long time favorite **The Bluegrass Solution** will be back again to brighten our day. **Southern Style** will be back again. At this time I'm not sure of the other band but I know Lynn is working on it to make sure we have a great show.

Don't forget we are having a **fiddle workshop** this month. Members free \$35 for non-members OR you can join BABA for \$35 and enjoy all the workshops and all the other BABA benefits.

The Texas State championships are coming up again in Pearl TX We are working to make them bigger and better this year and will be announcing the details soon. Make your plans to be there.

We Have workshops lined up for all the instruments Banjo in April. Bass in July and the dated for all the others will be announced soon.

Please don't forget BABA is only as strong as it's members. Without your membership and donations there wouldn't be a BABA.

When you see a BABA volunteer give them a thanks it goes a long way.

Pick on.
Rick

WHAT? B.A.B.A. is 31 years old??

INSIDE:

Upcoming Shows
Supporting Bands
Membership
Pick Your News
Stringing You Along
Special Events
Bluegrass Venues
Monthly Jams
Festival Flyers
Swap 'n' Shop
Bluegrass Radio
Thinkin' & Grinnin'
More cool stuff
Advertise here!!



****Articles are opinions of the writers alone and do not imply agreement on the part of the Board of Directors or the Members.****



Bay Area Bluegrass Association



Bay Area Bluegrass Association



Bay Area Bluegrass Association



Bay Area Bluegrass Association



Bay Area Bluegrass Association



Bay Area Bluegrass Association



Bay Area Bluegrass Association



Bay Area Bluegrass Association



Bay Area Bluegrass Association



Bay Area Bluegrass Association



Bay Area Bluegrass Association



Bay Area Bluegrass Association



Bay Area Bluegrass Association



Bay Area Bluegrass Association



Bay Area Bluegrass Association



Bay Area Bluegrass Association



Bay Area Bluegrass Association

This Month at BABA



The Bluegrass Solution



Southern Style



Fiddle Workshop

March 17, 2018

Hosted by

*One of the best in the
area BABA's own
Gloribelle Kelly*

At the March 17th BABA show

Free to all BABA members

\$35.00 for non members

*Here's a great Idea Join BABA for \$35
and get all the benefits of membership and
all the workshops free!!!!*



Banjo Workshop

April 21, 2018

Hosted by

Our own Singing Cowboy

Greg English



At the April 21st BABA show

Free to all BABA members

\$35.00 for non members

*Here's a great Idea Join BABA for \$35
and get all the benefits of membership and
all the workshops free!!!!*

THE FLOYD SALMON MEMORIAL DAY GOSPEL BLUEGRASS MUSIC FESTIVAL

SALMON LAKE PARK

4 Big Days!

MAY 24 ★ 25 ★ 26 ★ 27, 2018

Thursday, Friday, Saturday and Sunday

357 Salmon Lake Road, Grapeland, TX 75844



Southern Raised



Christian Davis



The Marksmen



The Punches Family



Alan Sibley



Catahoula Drive



The Blake Brothers

Robertson County Line • Dead End Road with Graham Punches • and More!

FEATURING

Southern Raised
Christian Davis
The Marksmen
The Punches Family
Alan Sibley
Catahoula Drive
The Blake Brothers
Dead End Road with
Graham Punches
Mark Krider and the
Southfork Grass Band
Saltgrass
Trinity River
Robertson County Line

ADMISSION

4 Day Advance Ticket: \$60
At the gate (After May 14): \$65
Thursday, 6-10 pm: \$15
Friday, 1-10 pm: \$20
Saturday, 1-10 pm: \$20
Sunday, 11-4 pm: \$15

CAMPING

Over 400 Full RV Sites!
30 & 50 amp are \$20/night

WEDNESDAY

Potluck at 6:00 p.m.
at Pavilion

Golf Carts can be
reserved by prepaying
a 3-day minimum rental
(\$105) in advance.

Call 936-697-5949 for
availability and payment



Trinity River



Mark Krider and the
Southfork Grass Band



Saltgrass



Texas Bluegrass Music
at Salmon Lake Park



ORDER FORM

The Floyd Salmon Memorial Day Gospel Bluegrass Music Festival

EARLY BIRD REDUCED PRICE 4-DAY PASSES - SAVE \$10

Deadline: prepay by May 14, 2018

By Mail: Include order form with
your check and mail to:

Texas Bluegrass Music
P.O. Box 1303
Magnolia, TX 77353
For info contact:
Coleebiller@aol.com
936-697-5949 • 281-259-5453
www.TXBluegrassMusic.com

| | |
|---------------|------|
| Advance 4-Day | \$60 |
| At the gate | \$65 |
| Thursday | \$15 |
| Friday | \$20 |
| Saturday | \$20 |
| Sunday | \$15 |

Children 15 and under Free with parents

Pay Pal | All Credit Cards | Checks or Cash



Name: _____
Address: _____
Phone: _____
I am paying for _____ tickets @ \$60 each (advance rate)

March Show Lineup!

HI THERE, BLUEGRASS MUSIC FANS! Come on out to the Johnnie Arolfo Civic Center in League City on Saturday, March 17th for an evening of fun and music from some of the best bluegrass music in the area!

Jam rooms open @ 4:30 PM and the STAGE SHOWS will start at **6:00 PM**. We'll have MUSIC, food, door prizes for members, and we aim to provide a good time for pickers and grinners alike. (Band schedules are subject to changes as needed)

The bands : **6 PM** *Strings over Texas* **7ish** *The Bluegrass Solution* **8ish** *Southern Style*

HERE

Johnnie Arolfo Civic Center, 400 West Walker, League City, Texas

HERE



Stringing You Along

HEY MEMBERS!

Be sure to stop at the BABA table, and get a MEMBER door prize ticket.

We've give TWO great door prizes each month as part of your membership - no extra cost to you. Just get your ticket and cross your fingers!

THANKS!

P.S. You can join there, too.



A flat pick Guitar player wins \$15 million on the National Lottery. When a reporter asked "What are you going to do now?" He replied "I'll carry on gigging 'til the money runs out."

A Guitar picker and a Bass player are arguing and the Mandolin player walks up to them and asks why they are fighting to which the Bass player replies, "Well the Guitar player detuned one of my strings and he won't tell me which one."

How do you make a guitar player's car more aerodynamic?
Take the pizza delivery sign off the roof.

How do you make a banjo player eyes light up?
Shine a flashlight in his ear.

Why guitars are better than women?

Guitars don't care how many other Guitars you've played.
Guitars don't care if you look at other Guitars.
Your Guitar won't care if you leave up the toilet seat.
Your parents won't remain in touch with your old Guitar after you dump it.
If you say bad things to your Guitar, you don't have to apologize before you play it again.
Guitars don't care if you're late.
A guitar has a volume knob.

If you break a guitar's G-string, it only costs \$.79 for a new one.
You can make your guitar as tight as you want it just by turning a peg.
If your guitar doesn't make sounds you like, you can retune it.
If your guitar strings are too heavy, you can just get a lighter set.

GOT KIDS?

GRANDKIDS?

Electrified pals?

Come by the
shop and see
our **fine**
electric
instruments
and amps, too.

Starter kits to
professional
grade. Check us out!



116 North Loop (610 @ Yale)
Houston, TX 77008
713-880-2188 www.fullersguitar.com

FOR ALL YOUR BLUEGRASS NEEDS

Acoustic Guitars
Vintage Kay Basses
Mandolins
Banjos
Dobros
Accessories



WHAT WOULD WE DO WITHOUT OUT SPONSORS? **NOTHING! PLEASE SUBSIDIZE THEM WHEN YOU ARE ABLE, AND BE SURE TO THANK THEM FOR SUPPORTING THE BLUEGRASS MUSIC THAT YOU LOVE!**

Texas Air Services, Inc
281-337-7763
www.texasairservices.com



"A trusted partner in Aviation & Engineering Innovations"

**FULLER'S
VINTAGE GUITAR**




ROGER L. EKLUND
Residential Construction/Remodeling

ROGER EKLUND
Owner

Estimates Available
Design & Construction
Longue City, Texas 77373
refixit@yahoo.com

40+ Years Experience

Mobile (281)543-2658



**SPACE CITY
INSPECTIONS, LLC**

Professional Real Estate Inspectors
www.spacecityinspections.com

Ed Fryday
ASHI, TPREI, TAREI, ICC, InterNACHI, HAR
281-636-9419



Playing Music From America's Roots

Brazos River Pickers

www.brazosriverpickers.com

Toe-Tapping Bluegrass and Good Old-Time Music
Guaranteed to liven up any event!

Rex Mann
Mandolin/Vocals

For Bookings - Bob Young (713)249-8115

VACANCY

Bluegrass Music Rising in
NW Houston

**Bluegrass Music Knight Out
Show and Jam** 2nd Friday Each Mo.

and Monday Night Jam: 6-9pm
* Location (for both): Weekley Community Center,
8440 Greenhouse Rd., Cypress, TX 77433

2nd Saturday Jam @ Krieb Woods Nature Ctr, Tomball, TX

Contact: Tony 281-373-1777, 281-910-4396;
Website: www.bluegrassrising.net
Email: tonymema@earthlink.net; and Booking
of "Almost Heaven Bluegrass Band"



Lonestar Bluegrass Band



Contact Chris Hirsch 281-491-1680
chirsch@windstream.net
www.lonestarbluegrassband.com

Sabine River Band
Available for your events



409-781-1201 sabineriverband.com/

**Mary E. Conn
& Associates**



**MARY E. CONN
& ASSOCIATES**

The College
of Law & Real Estate

MARY E. CONN
(713) 987-4390
www.maryconn.com

The Pet Rooster Band
Diagrams with a few Variations





Available For Your Next Event:

- Bluegrass Festivals
- Private parties
- Family reunions
- Church functions
- Monthly bluegrass clinics

Joe • R. Lynn • Cathy • Doctor Phil

www.petroosterband.com • phone (979) 297-2709

**SAND
PIPER
RV RESORT**



Rates & Reservations
sndpiper325@aol.com

Sand Piper RV Park
Seawall Blvd & Ferry Road
Galveston Island, Texas 77550
409-765-9431 or 409-765-9409
<http://sandpiperrvresort.com/>

LOTS OF ROOM FOR MORE SPONSORS, FOLKS!

This goes out to over 300 musicians, music fans, and bluegrass music associations every month. As a sponsor, your ad also runs on the screen at the monthly shows in front of another 300 people. If the economy is great and you don't need to advertise, you can always support the arts AND claim a tax deduction - we're a 501(c)3 organization. **Help us, help you!**

Contact Rick Kirkland, crk5820@msn.com or call him at 281-488-2244 for more information.



VACANCY



YOUR ONE STOP SHOP FOR SIGNS & GRAPHICS

- ~ DEDICATED TO QUALITY & SERVICE
- ~ COST EFFECTIVE
- ~ EXPERIENCED
- ~ ABOVE & BEYOND

Some Of Our Products & Services

Full Color Banners • Yard Signs • Decals • Magnetics
Aluminum Signs • Real Estate Signs • Posters • Brochures
Window Perf • Vehicle Lettering & Wraps
Business Cards • Flyers • Stationery • Forms • Postcards
Street Signs • Lit Signs • Neon Signs • Dimensional Lettering
Digital Readers • Channel Letters • Pylon Signs
Full Color Apparel Printing • Embroidery • Engraving
Promotional Products ...

Need help with innovative Ideas?

Give us a call!

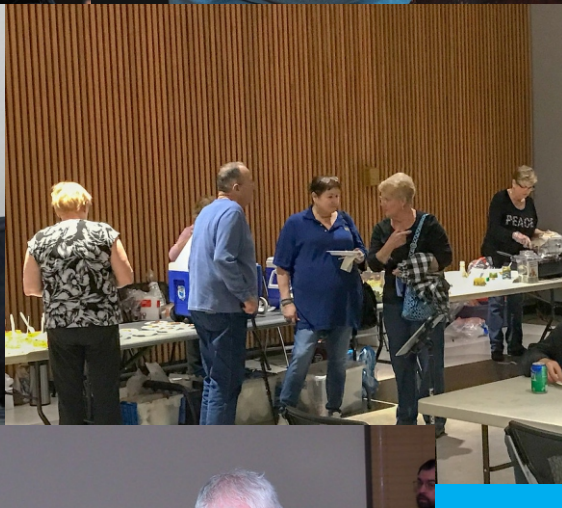
2212 Palmer Hwy, Texas City, Texas

409-945-7446

sales@tntsigns.net

www.tntsigns.net





SWAP 'N' SHOP !

*** TRAILER & EQUIPMENT FOR SALE ***

I would like to sell the equipment for \$600 at least and the trailer to hold it for \$2000. The trailer only has about 60 miles total on it. It was only used about 6 Saturdays (1st Saturday of each month) and about 5 miles each direction. There is a list of all equipment.

There are definitely 2 microphones that are meant to carry the sound from an entire group instead of having a microphone at each musician.

I prefer to be contacted via email at betty2bigdogs@hotmail.com, but you can call 281-674-3220 and leave a message and I will call back. Photos available on request. Thanks, Betty Kaechler

| | | |
|--------------------------------------|-------------------------|-------------------------------------|
| Music Gear Snake 50' w/ 8 mic inputs | 1 Phonic 15" speakers | |
| 2 Audio Technica Mics | 1 Wharfdale Pro monitor | |
| 2 Shure Mics PG58 | 7 Mic boom stands | |
| 1 Fender P51 | 8 Mic cables | |
| 2 MXL Mics | 2 instrument cables | |
| 1 Phonic 740G | 2 tool boxes | |
| | 1 accessory case | Equipment alone valued @ over \$600 |

About BABA

The Bay Area Bluegrass Association (BABA) was organized in 1986 and incorporated in 1987 under the Texas Non-Profit Corporation Act. The primary purpose of BABA is to preserve, encourage, and promote Bluegrass and Bluegrass gospel music as an American art form. BABA promotes Bluegrass through being active in community events, fund raisers, festivals, and monthly shows. BABA is a 501(c)(3) tax deductible organization; see any Director for information.

The monthly show is free to the public and features Bluegrass from the local and national scene. The stage show begins at 6:00 PM, but pickers are welcome to bring their instruments and come earlier to jam. Tasty, inexpensive food is available at the show, and there are raffles, door prizes, and Bluegrass merchandise for sale. This is a 'no alcohol' event, but there's plenty of music and great family fun!

Proceeds from donations, sponsors, memberships, sales, and raffles are used to keep the doors open and the regular shows free to the public. They also maintain and replace sound equipment, storage, security, and expense of keeping the music playing. We thank you for your attendance, your generosity, and your love of the music.



Professional Real Estate Inspectors

www.spacecityinspections.com

Ed Fryday

ASHI, TPREIA, TAREI, ICC, InterNACHI, HAR

281-636-9419



MUSIC LESSONS

Violin, Viola, Piano & Fiddle

HALLIE REEVES

(713) 477-2730



Colee and David Littlefield
Festival Management/Promoters

Salmon Lake Park **Coushatta Recreational Ranch**

26717 Bayou Tesch Dr. www.TXBluegrassMusic.com c. 936-697-5949
Magnolia, TX 77354 coleebiller@aol.com c. 281-259-5453



HALLIE REEVES

strolling "gypsy" violinist

Balloon Deliveries Phone-A-Fiddle-Grams
Dinners, Weddings, Receptions, Etc.

Classical Pops Music

713-477-2730

VACANCY

Your ad could be here, reaching 300+ bluegrass music fans every month.

ADD-ONS TO THE BLUEGRASS JAMS!

Until we get time to reformat the whole list, this is the overflow page for some 'not-too-far-from-Houston' jams. Thanks to Tony & Nema Redding for the info!

At the Weekley Community Center, 8440 Greenhouse Road (North @ Longenbaugh Road), Cypress, TX 77433, please make note of the following:

Every Monday, 6:30 to 9:00 PM, Rooms 403 and 404

Second Friday Show and Jam, Show is 6:15 to 8:30 PM and the Jam is 4:00 to 8:45 PM in the auditorium.

Contact: tonynema@earthlink.net or phone 281-910-4396

SUPPORTING BANDS of the BAY AREA BLUEGRASS ASSOCIATION

ALMOST HEAVEN: Tony Redding, 281-910-4396, tonynema@earthlink.net
www.bluegrassrising.net/#!/about-our-band/clmys

THE BLUEGRASS SOLUTION: Mike Fuller, 281-989-8719, mike@fullersguitar.com
www.thebluegrasssolution.com

THE BRAZOS RIVER PICKERS: Bob Young, 713-249-8115, bob.young@spectracf.com
www.brazosriverpickers.com

BUFFALO NICKEL BLUEGRASS BAND: Laney Sims, 346-901-1882,
laneysim55@gmail.com www.thebuffalonickebluegrassband.com

CYPRESS CREEK: Dave Culbertson, 832-544-4373, dculbertson@consolidated.net
www.cypresscreekband.com

THE GREER FAMILY BAND(Brenham): Lawrence Greer, 979-454-1120,
lgreer@txsun.net www.greerfamilyband.com

THE LAUGHING LIZARDS STRING BAND: Steve Bing, 225-405-9707,
stevebingmusic@aol.com www.laughinglizardsband.com

LONESTAR BLUEGRASS BAND: Chris Hirsch, 281-788-3840, cshirsch@windstream.net
www.lonestarbluegrassband.com

PET ROOSTER: Lynn Holbrook, 832-584-5575, info@petroosterband.com
www.petroosterband.com

SABINE RIVER BEND BAND: Earl Cochran, earlcochranjr@aol.com
www.sabineriverbend.com

SOUTHERN STYLE: Rick Kirkland, 281-488-2244, crk5820@msn.com
www.southernstylebluegrassband.com

SOWELL FAMILY PICKERS: Cindy Sowell, 979-251-2605
www.thesowellfamilypickers.com

SKIDAWAY RIVER: Doug Burtchaell, 281-380-0157 dburtchaell@comcast.net

TEXAS OLDE TYME BLUEGRASS BAND:
texas.oldetyme.bluegrass.band@gmail.com www.totbgb.com

THE REMNANTS BAND: James Collins, 281-216-2749

WHITE DOVE: Glen Beauboeuf, 832-289-7895 glen_angieb@yahoo.com
Facebook - White Dove

A BIG BLUEGRASS THANKS!

to our members who help keep the music playing every month, and an extra shout out to those who have joined as Gold Club, Lifetime, Endowment and Foundation levels. We couldn't do this without all of you!

Members' names are in alphabetical order

Gold Club Members

Doug Averitt, Mike & Pat Conwell, Mack Himel, Lynn Holbrook, Rick & Shirley Kirkland, Ronald Moore, Marlene Payne, Laney & Shannon Sims

Membership in the Gold Club is payable annually. We thank you for your "extra" support.

BABA Lifetime Members: Brad & Dee Alford, Dave Aldrich, Scott & Diana Armstrong, Doris Arnett, Chris Bagley, Hubert & Shirley Brasseaux, Cara Cooke, Eric & Kim Corgey, Lyman & Annis Cox, Paul & Dana Cutts, Robert & Debi Duke, Bill & Joni Dusenbury, Roger & Pauline Eklund, Harry Edwards, Ruth Evans, George Franklin, Jason & Alicia Fricke, Ed & Becky Fryday, Paul & Lillie Futch, John & Jean Gardner, Bill & Geri Gatlin, J.B. & Nancy Graham, Jim & Sharon Greenlee, Doris Grigg, Chuck & Mary Pat Gunn, Robert & Elizabeth Hasserd, Tom Harrison, Ron & Anne Hayden, Arvin & Sheryl Holland, Sammy & Ottie Holloway, Jan Johnston, Stan Jones, Paul & Linda Kerr, David & Colee Littlefield, Ken & Wanda MacDonnell, Phil & Cecile Mathers, Paul & Madeline McKneely, Faber & Sandy McMullen, Patrick Milligan, Barbara Monroe, Charles & Ellen Orsburn, Mike Pettitt, Bill & Glenna Pierpont, Norman Ponder, Billy Potts, Tony & Nema Redding, Karl Reid, Jack (R.I.P.) & Carol Ritter, Tom & Sandy Roberts, Jonathan & Kristine Samuell, Billy & Terry Schmidt, Jerry & Monica Scribner, Gordon Spaulding, O.K. & Sharon Stafford, Bob & Marilyn Taylor, James & Laura Taylor, Scott Teven, Charlene Threlkeld, David Towery, Helen Vinson, Viola Wakefield, Larry Wenner, Paul Williams.

Endowment Gift Members:

Phil & Fern Deans, Pat Lomas, Lisa Maranto



Foundation Members:

Chris Bagley, Ed Fryday, Mike Fuller



Texas State Mandolin, Banjo & Flat Pick Guitar
Championship

June, July August

New bigger prizes (TBA)

Entry to Winfield

Held in the center of Texas at

Pearl Community Center

Limited number of entries. Enter early on line

Brought to you again by BABA, Pearl Bluegrass

And Bluegrass organizations of Texas

Please see your full list of sponsors

WHODUNIT AT THE LAST SHOW?

Could we put on ANY shows without our volunteers? **NO!** Tell them thank you when you pass by one of 'em.

BANDS

Southern Style
Cactus Pickers 2.0
Out Of The Blue

EMCEE

Arvin Holland

SET UP & TAKE DOWN

Roger Eklund,
Tom Wood, Rick Kirkland,
Lynn Holbrook

SOUND

Roger Eklund and Tom Wood

FOOD

Sheryl & Arvin
Elaine Bergeron

TABLE & MEMBERSHIP

Judy Sturgeon



Are you and your bluegrass or bluegrass gospel band interested in playing at one of our regular monthly shows in League City?

We're always happy to have our regular great bands for repeat performances, or new groups to spice things up a bit!

Contact Lynn Holbrook at 832-584-5575 or email him at rlynnholbrook@gmail.com

SLOW JAM

Laney Simms

PHOTOS

Travis Posey

BE SURE TO THANK THEM!

MEMBERSHIP LEVELS

[JOIN: at the show, or online](#)

Individual Membership \$35.00 annually

You'll become a member of the BABA family and support the free monthly shows & jams. You'll receive the BABA Bulletin Newsletter monthly, admission to workshops at the monthly shows, admission to Bluegrass in the Park for BABA members & guest, updates about Bluegrass events in the area, discounts on some bluegrass shows in the area – as well as the satisfaction of supporting BABA and Bluegrass Music in Texas.

Family Membership: \$50.00 annually

You'll become a member of the BABA family with all the benefits of the individual membership for you and your immediate family. You'll support the free monthly shows & jams, receive the BABA Bulletin Newsletter monthly, get admission to workshops at the monthly shows and admission to Bluegrass in the Park for BABA members & guest, get updates about Bluegrass events in the area, discounts on some bluegrass shows in the area and the satisfaction of supporting BABA and Bluegrass Music in Texas.

Gold Club Membership Individual: \$100.00 annually

Get all the benefits of the individual membership, a Gold Club Membership Name Badge, & a BABA shirt for giving that extra support to the BABA family. You'll become a member of the BABA family and support the free monthly shows & jams, receive the BABA Bulletin Newsletter monthly, get admission to workshops at the monthly shows, admission to Bluegrass in the Park for BABA members & guest, updates about Bluegrass events in the area, discounts on some bluegrass shows in the area - and the satisfaction of supporting BABA a little extra.

Lifetime Member Individual \$350.00

Get all the benefits of BABA membership for life! You'll become a member of the BABA family and support the free monthly shows & jams, and receive the BABA Bulletin Newsletter monthly. You'll get admission to workshops at the monthly shows, admission to Bluegrass in the Park for BABA members & guest, updates about Bluegrass events in the area, discounts on some bluegrass shows in the area and the satisfaction of supporting BABA for life.

Lifetime Member Family: \$500.00

Get all the benefits of BABA membership for life for you and your immediate family! You'll become a member of the BABA family and support the free monthly shows & jams, and receive the BABA Bulletin Newsletter monthly. You'll get admission to workshops at the monthly shows, admission to Bluegrass in the Park for BABA members & guest, updates about Bluegrass events in the area, discounts on some bluegrass shows in the area - and the satisfaction of supporting BABA for life.

Lifetime Gold Club Membership Individual \$1000.00

Get all the benefits of the individual membership, A Gold Club Membership Name Badge, A BABA shirt, and knowing that you are giving that extra support to the BABA family. You'll become a member of the BABA family and support the free monthly shows & jams. You'll receive the BABA Bulletin Newsletter monthly, admission to workshops at the monthly shows, admission to Bluegrass in the park for BABA members & guest, updates about Bluegrass events in the area, discounts on some bluegrass shows in the area and the satisfaction of supporting BABA 'above and beyond'.

Anton "Tony" Ullrich

is celebrating 45 years (1972 - 2017) of teaching folks in the greater Houston area to play Bluegrass style banjo.

Your private banjo lessons begin with an introduction to BanjerTab's unique approach to creating syncopation (that 'ahead of the beat' bounce) that you hear in the recordings of the first generation greats, who had no other form of learning than creating their banjo style 'as they went.'

Once you're familiar with BanjerTab, choose the area of playing you want to focus on: Scruggs style, full-chord back-up, mid-neck / high-neck picking, melodic style (fiddle tunes /back-up), or specific songs you have always wanted to play.

The expertise gained through 54 years of playing and 45 years of teaching is available to you now. Choose videotape lessons or come for private lessons in Houston.

Call 713-785-6655 or fax 713-532-6655



Authorized Deering Banjo Dealer
Home of the Texas Banjo

anton@banjerproductions.com
www.5stringbanjer.com

World Music

3750 Cartwright Rd.
281-403-1615

- 🌐 We teach **ALL INSTRUMENTS**, including voice
- 🌐 DVD Video & CD Audio Recording
- 🌐 Instrument Sales
- 🌐 Repair & Rental



GIFT
certificates
available

YOUR AD HERE:



409-945-7446 or sales@tntsigns.net
2212 Palmer Hwy, Texas City, TX 77590

Texas Bluegrass Jams & Shows

Combined list from Bay Area Bluegrass Association and Central Texas Bluegrass Association: If you're in Southeast to Central Texas, bring your instruments because we're going to find you a place to pick and jam.

PLEASE notify us at bayareabluegrass2@aol.com if you find any errors, or have a jam that you'd like changed, added or deleted. We list by day of the week, then by town/city.

Mondays

Bluntzer: 3rd Monday, 2-6 PM, South Texas Bluegrass Gospel Jam, G&H BBQ, 5491 Hwy 624. phone 361-387-4552
Email stx.bluegrass@gmail.com,

Cypress: Every Monday 6:30-9:00 PM, Weekly Community Center, 8440 Greenhouse Rd (North @ Longenbaugh) Rooms 403 & 404 Email tonynema@earthlink.net, phone 281-373-1777

San Antonio: 2nd & 4th Mondays, 7 PM, "Monday-in-a-Jam" at Grady's BBQ, 327 E. Kakoma Dr., 78216. Phone Peyton Starr 210-870-4321 or Sheryl Sultenfuss (no phone listed)

Tuesdays

Llano: 1st & 3rd Tuesday, 7 PM, Beginner/Intermediate, 1st Presbyterian Church. Phone Jeff White 325-248-4114

Medina: 2nd Tuesday, All Gospel Jam, 6 PM, 1st Baptist Church. Phone Linda Barton, 830-589-2486

Nassau Bay: 1st Tuesday, 7-@9 PM at Fuddruckers, 2040 NASA Pkwy, 281-933-1620

Shulenburg: 1st & 3rd Tuesday, 6:30-9:30, Shulenburg RV Park Clubhouse. Phone Loretta Baumgarten 979-743-4388 or
Email camp@ShulenburgRVPark.com

Sugarland: 6:30 to 9:00 PM, 1st Presbyterian Church, 502 Eldridge Rd, Sugarland. Bluegrass and accoustic instruments only. Contact samgrice@windstream.net or 832-428-3165

Wednesdays

Austin: 1st Wednesday, 7-10 PM, Musician's Woodshed, 3698 RR 620 South, Ste. 107, 78738, themusicianswoodshed.com

Houston: each Wednesday, 6-9 PM, at Hickory Hollow, 100 Heights Blvd, Houston (just south of I 10 on Heights Blvd)

Houston: 4th Wednesday 7PM to 9PM, Old Time Music jam, Pizza Inn, 1801 Mangum Rd, @W 18th & Mangum Rd just outside the NW Loop. Contact Steve Bing, 225-405-9707

Thursdays

Austin: 1st & 3rd Thursdays, 7 PM, Bruce Manbridge's home. **Contact Steve Mangold for all Austin Jam info, 512-345-6155**

Cypress: Every 3rd & 5th Thursday, 12:30 - 3PM, Weekly Community Center, 8440 Greenhouse Rd, Cypress. Email: tonynema@earthlink.net or phone 281-373-1777

Georgetown: Every Thursday, 5:30-7:30 PM, Duke's BBQ. Email sigi@sigi.us, phone 512-869-8076

Groves: Every Thursday, 7 PM, Allie Morvent's House, phone 409-962-5236

Manchaca: Every Thursday, 6:30-9 PM, Manchaca Railroad BBQ, FM 1626. Phone Dave 512-680-4433

Fridays

Bandera: 4th Friday, 6:30 PM, Silver Sage Corral, east of Bandera. For info, phone 830-796-4969

Carthage: 1st Friday, 6:30 PM, Town Square. For info, phone 903-678-3857

Cypress: 2nd Friday, show 6:30-9:00 PM, Jam 4 - 8:45 PM, Ausitorium. Weekly Community Center, 8440 Greenhouse Rd, (North @ Longenbaugh) Rooms 403 & 404 Email tonynema@earthlink.net, phone 281-373-1777 or check the website www.bluegrassrising.net

Hondo: 1st Friday, begins 11 AM, Hondo Hootenany. Hondo Community Center, 1014 18th St. Phone 830-426-2831

Utopia: 3rd Friday, 7 PM, Senior Citizen's Center. Phone Skip Doerr 830-966-6362

Victoria: 3rd Friday, Slow Jam 5-7 PM, regular jam 7-10 PM, American Legion Post #166, 1402 E. Santa Rosa. Free Admission. Email crossroadsbluegrass@yahoo.com or phone Stan Kendrick 361-935-4413 or Gary Moses 361-550-5466

Saturdays

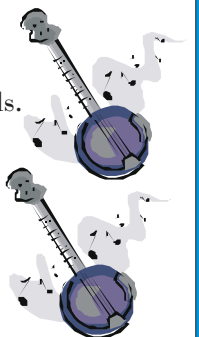
Alvin: Every Saturday, Texas Opry, no time given, 1720 Sealy, Admission is charged. Phone 281-432-2942

Austin: 2nd & 4th Saturdays, 3 to 6 PM, all levels, CTBA sponsored. 3801 Berkman Dr., 78723.

Beaumont: 4th Saturday, no time listed, Rosedale Baptist Church, 7110 Concord. S.E. Texas Dulcimer Friends. Phone 409-866-0848

Bellville: 4th Saturday, 4 PM jam & 6 PM show Jan through Sept, Coushatta RV Ranch,
Email coleebiller@aol.com, phone 936-697-5949, website www.TXBluegrassMusic.com

Deer Park: 2nd Saturday, 11 AM-3 PM, Troy's Music Shop, 4005 Center St. No contact listed.



DON'T STOP NOW, WE'RE JUST GETTING STARTED! CONTINUED ON NEXT PAGE.....

Here's the rest of the jam and show schedule! 'pick' your favorite.....

Saturdays continued

Fayetteville: 2nd Saturday, 6 PM April – Nov, Courthouse Square. Email info@texaspickinpark.com or see www.texaspickinpark.com

Field Creek: 1st Saturday, 6 PM, Field Creek Music. Field Creek is between Llano and Brady on Hwy 71.
Phone Bill Tuckness 325-247-3223

Garland: Every Saturday March – Nov, 7:30 PM – 1 AM, between Main & State Sts. @ 6th St.

See the website: www.meetup.com/bluegrass-142

Glen Rose: 3rd Saturday, no time listed, Oakdale Park, Paluxy River Bluegrass Assoc., free stage show, camping encouraged.
Phone John Scott 817-525-0558

Grapevine: 2nd Saturday, 215 Jenkins St, Grapevine from noon to 4:00 PM; Southwest Bluegrass Association

Harwood: 3rd Saturday, 2 -9 PM, Jam & Stage Show. 9 mi. E. of Luling, Hwy 90. Tony Conyers 512-601-1510 ; 512-940-3731

Henderson: 1st Saturday, 6 PM, Odd Fellows Hall. Phone 903-889-2783 or 903-566-6650

Houston: 2nd Saturday, 7:30 PM, Admission charged and not always bluegrass, Houston Folklore Society,
West University Community Building, 6104 Auden. Phone 281-347-3235

3rd Saturday, 3-6 PM, Woodland Christian Church, 607 Rogers, North Harris County Dulcimer Society. No phone listed.

Huntington: Nothing going on any more. Find a new jam? email the editor at bayareabluegrass2@aol.com

League City: 3rd Saturday, 5-11 PM jam, 6-9 PM show, 400 W. Walker St @ the Civic Center, Bay Area Bluegrass Assoc.
Phone 281-488-2244

Liberty Hill: 4th Saturday, 1-6 PM, Hwy 29 West. Phone Paula 512-778-5410

Llano: 1st Saturday, 6 PM, Field Creek Music. Field Creek is between Llano and Brady on Hwy 71.

Phone Bill Tuckness 325-247-3223

4th Saturday Jan – Oct, 5:30 – 10:30 PM, Bluegrass in the Hill Country Jam, The Badu House.

Email info@bluegrassinthehillcountry.org

Magnolia: 1st Saturday, Jam @ 4 PM, stage show 6-9 PM featuring 3-4 local bands. Texas Olde Tyme 1st Saturday Bluegrass Jam, West Montgomery County Community Development Center, 31355 Friendship Drive, Magnolia TX 77355-2603. Contact Bobby Stem 281-744-7652 Website: www.totbgb.com

Marshall: 3rd Saturday, 7 PM Show, Lions Community Center, 1201 Louisiana St. Phone 903-935-7023

Minden: 3rd Saturday, 5:30 PM, Community Center. Phone 903-657-3320

Montgomery: 1st Saturday, The Garrett House. May be cancellations due to weather/scheduling; Contact Lonnie Clover at lrclover@msn.com before travelling. Jam starts @ 10 AM until 2 PM or so.

Needville: 1st Saturday, 6 PM-8 PM concert. Brazos River Pickers perform free at Brazos Bend State Park in the amphitheater. Concert is free but usual State Park Entry fees apply. Phone 281-344-0601 or website www.brazosriverpickers.com

Odessa: 2nd Saturday, Noon to 6 PM, Jam and potluck dinner for pickers and for grinners (guests welcome): Acoustic only with exception for bass; Music is Bluegrass, Old Time Country, Gospel and 'other'. No smoking or alcohol. 4400 Andrews Highway @ Jesus Connection Church, Odessa Contact Pete & Claudette Stull, ph: 432-362-6944, email: wb7amp@cablone.net

Pearl: 1st Saturday, 1 PM, Pearl Bluegrass Jam & Show. Old School House on FM 183 (not US 183).

Purmela. RV hookups available. Phone Ronald Medart 254-865-6013 or website www.pearlbluegrass.com

Round Rock: 3rd Saturday, 2-5 PM, Danny Ray's Music, 12 Chisholm Trail. Phone 512-671-8663 or website <http://dannyraysmusic.com>

Sacul: 4th Saturday, 6:30 PM, Opry House, Hwy 204 (25 mi. SE of Jacksonville). Phone 903-586-8484 or 409-326-4544

Sulphur Springs: 3rd Saturday, October through March. No time listed. 400 Como St. Phone 903-885-4078 or 903-885-7063

Tomball: 4th Saturday, noon - 4PM, Kleb Woods Nature Center, 20303 Draper Rd (@ Muschke Rd) Tomball 77377
Email tonynema@earthlink.net or phone 281-373-1777 or 281-910-4396.

Walker, LOUISIANA: in case you sneak across the border. 4th Saturday, no time listed, Old South Jamboree, U.S. Hwy 190.
Phone 504-664-3630

Wrightlight: 4th Saturday, 7 PM, Opry House. Phone 903-364-2539

Sundays

Austin: every Sunday, 2 PM, Hill's Café, 4700 South Congress Avenue, Austin, Texas 78745 ***Site Change!

Corpus Christi: 2nd Sunday, 2 PM, Heritage Park. South Texas Bluegrass Association, Phone Bill Davis 361-387-4552

**SEE: the overflow jam info
at the bottom!**

**PLEASE notify us of any corrections, deletions or additions at bayareabluegrass2@aol.com
so we can keep the information current and correct. Always call before traveling, just in case!**

**PRESIDENT**

Rick Kirkland

VICE-PRESIDENT

Laney Sims

TREASURER**SECRETARY**

Judy Sturgeon

DIRECTORS

Phil Deans

Travis Posey

Arvin Holland

Lynn Holbrook

Roger Eklund

Don Meade

WEBMASTER

Travis Posey

tposey123@yahoo.com

EDITOR

bayareabluegrass2@aol.com

BABA INFO

281-488-2244

**TO ALL FUDDRUCKER'S JAMMERS:**

If you like the Fudd's jams but haven't been getting your monthly email reminder, shoot us an email request at: bayareabluegrass2@aol.com. If you'd like to be added to the list, just let us know!

Join us at Fuddrucker's, NASA Parkway, on the FIRST TUESDAY of every month for dinner and jamming. Turn in a BABA 'coupon' and we will receive a percentage of your food and drink purchase price as a donation from Fudd's. Great food, great friends, great bluegrass....how good can it get?! See Rick Kirkland for a coupon at the Jam.

BLUEGRASS RADIO WAVES & INTERNET SITES

KNES - FM 99.1 SUN 2-5 PM Fairfield, Carl Conkling

KEOS - FM 89.1 TUES 7-9 PM College Station, John Roths

KPFT - FM 90.1 SUN 4-6 PM Houston, Chris Hirsch

KVLU - FM 91.3 SAT 7-9 PM Beaumont

KOOP - FM 91.7 SUN 10 AM-NOON Austin, Sharon Sandormirsky/
Ted Branson/ Rod Moog

KKUS - FM104.1 9-10 AM Tyler, Dave Rousseau

KSHN - FM 99.9 SAT 8:30-10:30 PM Liberty, Roy Bennett

KSYM - FM 90.1 SUN NOON-2 PM San Antonio, Hank Harrison

KJIC - FM 90.5 SAT & SUN 6 AM-6 PM Houston, Believers Bluegrass

KAMU - FM 90.9 SAT 7-8 PM College Station, Dave Higgs (Nashville)

www.bayareabluegrass.org <http://www.pick-n-bow.com>

www.bluegrassdog.com

www.bluegrassheritageradio.com

www.bluegrassmusicjams.com/jam-texas.html

www.centraltexasbluegrass.org

www.cybergrass.com

<http://ibma.org>

www.southwestbluegrassclub.org

www.spbgma.com

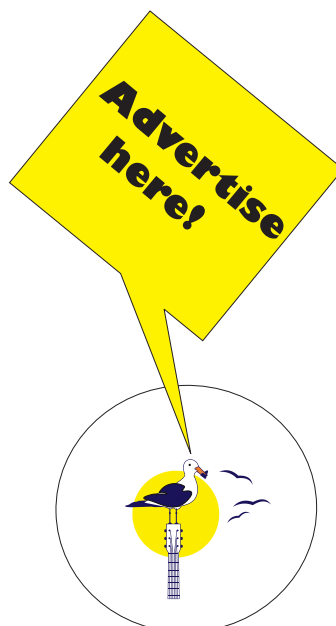
www.TXBluegrassMusic.com

www.westtexasbluegrasstraditionalmusicassociation.com



The BABA Bulletin would like feedback and Bluegrass articles from our readers. Tidbits or articles can be: an amusing quote; reviews of festivals or music conventions; behind-the-scenes reports of bands; technical; RV and campground reviews; anything that you feel would be of interest to Bluegrass enthusiasts. Articles can span more than one issue, and full credit will be given. Original, uncopyrighted work only, please and thank you!

Thinkin' and Grinnin'



<http://ibma.org/membership>

Support your local bluegrass music association. Memberships for adults start at \$40 dollars and the professional single membership is \$75.

ADVERTISING RATES

Business Cards

\$50 per year

\$5 per issue

Quarter Page

\$75 per year

\$10 per issue

Half Page

\$150 per year

\$15 per issue

Full Page

\$300 per year

\$30 per issue

email for information:

bayareabluegrass2@aol.com

SUPPORT BLUEGRASS MUSIC

<http://www.bayareabluegrass.org/membership.html>

<https://ibma.org/membership>

<http://www.spbgma.com/membership.html>

