

# THE BABA BULLETIN

The Bay Area Bluegrass Association

5820 Misty Meadow, League City, TX 77573

May 2019

32 Years of Bluegrass Volume 32, Issue 10



## PRESIDENT'S MESSAGE

The weather is heating up and so is the Bluegrass music around here. This month we have White Dove and The English Brothers for your enjoyment.

Thanks to the bands last month Southern Style, Dead Girl Songs, and our old friends Old Dirt Road Band. It sure was good to see David and the gang.

Let's give a hand to this year's winners of the Texas State Championships, held at the Bluegrass Heritage Festival.

The 2019 Champions are

Mandolin: Chip Bach from Cedar Park

Guitar: Chapman Welch from Pearland

Banjo: Riley Gilbreath from Crowley

A Big thanks to Fred & Sue Knorre, Alan Tompkins, and all the entire staff; you all did an outstanding job...See page 3 for more info!

I mentioned this before but it needs to be repeated and acted on. Thanks to everyone that pitched in and helped out with all the work it takes to put on these BABA shows from booking bands, setting up and taking down the sound equipment, to running the slow jam. **We need help** in several locations. We're wearing out the ones that work so hard. Roger could use some help with the **sound equipment** and Judy is retiring from her BABA duties so we sure could use some help with **membership** and the **BABA table**. (See page 16, bottom)

BABA is only as strong as its members. Your membership and donations are what keep the doors open. Without your support there won't be any BABA shows. Pitch in and give us a hand if you can. Be sure to tell the crew thanks for the job they're doing. A thanks goes a long way.

Keep on picking  
Rick

PS Happy Birthday To Judy!!!!!!!

**WHAT? B.A.B.A. is  
32 years old??**

## INSIDE:

Upcoming Shows  
Supporting Bands  
Membership  
Pick Your News  
Stringing You Along  
Special Events  
Bluegrass Venues  
Monthly Jams  
Festival Flyers  
Swap 'n' Shop  
Bluegrass Radio  
Thinkin' & Grinnin'  
More cool stuff  
Advertise here!!



**\*\*Articles are opinions of the writers alone and do not imply agreement on the part of the Board of Directors or the Members.\*\***

# April Show Lineup!

**HI THERE, BLUEGRASS MUSIC FANS!** Come on out to the Johnnie Arolfo Civic Center in League City on Saturday, May 18th, for an evening of fun and music from some of the best bluegrass bands in the area! Bring your Sweetie, your neighbor, your kids, a friend or two.

Jam rooms open @ 4:30 PM and the STAGE SHOWS will start at **6:00 PM**. We'll have MUSIC, food, door prizes for members, and we aim to provide a good time for pickers and gridders alike. (Band schedules are subject to changes as needed)

The bands : **6 PM** The Never Alone Trio **7 PM** White Dove **8:30 PM** TBA

**HERE** →

**Johnnie Arolfo Civic Center, 400 West Walker, League City, Texas**

← **HERE**



## HEY MEMBERS!

**Be sure to stop at the BABA table, and get a MEMBER door prize ticket.**

**We've give TWO great door prizes each month as part of your membership - no extra cost to you. Just get your ticket and cross your fingers!**

**P.S. You can join and renew there, too.**



## Stringing You Along

### Things to NOT say to a Texas Highway Trooper

1. I can't reach my license unless you hold my beer.
2. Sorry, Officer, I didn't realize my radar detector wasn't plugged in.
3. Aren't you the guy from the Village People?
4. Hey, you must've been doin' about 125 mph to keep up with me. Good job!
5. Are you Andy or Barney?
6. I thought you had to be in relatively good physical condition to be a police officer.
7. You're not gonna check the trunk, are you?
8. Gee, Officer! That's terrific. The last officer only gave me a warning, too!
9. Do you know why you pulled me over? Okay, just so one of us does.
10. I was trying to keep up with traffic. Yes, I know there are no other cars a round. That's how far ahead of me they are.
11. When the Officer says "Gee Son....Your eyes look red, have you been drinking?" You probably shouldn't respond with, "Gee Officer your eyes look glazed, have you been eating doughnuts?"

## TEXAS STATE CHAMPIONSHIPS

Update from Alan Tompkins at the Bluegrass Heritage Foundation

We were excited to have the opportunity to host the Texas State Championships in conjunction with the Bluegrass Heritage Festival this year. It was a challenging project that required a huge commitment of time and effort, and we were fortunate that Sue and Fred Knorre stepped up to do the hard work this year. They did a great job for all of us bluegrass fans in Texas! We were fortunate to have a long list of generous sponsors who made it possible for our winners to go home with cash prizes, plaques, and a paid entry to compete at Windfield for our contest champions.

We are thrilled that Lucas White, a former Texas state guitar champion, has agreed to take on the management of the Texas State Championship contests project on behalf of the Bluegrass Heritage Foundation for 2020. Lucas worked closely with Sue and Fred Knorre this year, along with several of our other BHF volunteers, so that we can make a smooth transition in 2020. We'll have more details on all of that before too long, but now let's wish the best of luck at Winfield to Chip Bach, Riley Gilbreath, and Chapman Welch - our 2019 Texas State Champions! The details are on the web page devoted to the championships - [Texas State Championships](#) -

### Guitar



- 1st - Chapman Welch, Pearland
- 2nd - Scott Owen, Rowlett
- 3rd - Samuel Smith, Mesquite
- 4th - John-Samuel May, San Saba
- 5th - Max Zimmet, Austin



### Banjo

- 1st - Riley Gilbreath, Crowley
- 2nd - Mark Krider, Athens
- 3rd - Ethan May, San Saba
- 4th - Caleb Lindley, The Woodlands
- 5th - Daniel Voeller, San Antonio

### Mandolin

- 1st - Chip Bach, Cedar Park
- 2nd - Scott Owen, Rowlett
- 3rd - Samuel Smith, Mesquite
- 4th - Nathaniel Dalzell, Richardson
- 5th - Evan Boatwright, Gatesville





**GOT KIDS?**

**GRANDKIDS?**

**Electrified pals?**

Come by the  
shop and see

our **fine**  
**electric**  
**instruments**  
**and amps, too.**

Starter kits to  
professional  
grade. Check us out!



116 North Loop (610 @ Yale)  
Houston, TX 77008  
713-880-2188 [www.fullersguitar.com](http://www.fullersguitar.com)

## FOR ALL YOUR BLUEGRASS NEEDS

Acoustic Guitars  
Vintage Kay Basses  
Mandolins  
Banjos  
Dobros  
Accessories





## YOUR ONE STOP SHOP FOR SIGNS & GRAPHICS

- ~ DEDICATED TO QUALITY & SERVICE
- ~ COST EFFECTIVE
- ~ EXPERIENCED
- ~ ABOVE & BEYOND

### Some Of Our Products & Services

Full Color Banners • Yard Signs • Decals • Magnetics  
Aluminum Signs • Real Estate Signs • Posters • Brochures  
Window Perf • Vehicle Lettering & Wraps  
Business Cards • Flyers • Stationery • Forms • Postcards  
Street Signs • Lit Signs • Neon Signs • Dimensional Lettering  
Digital Readers • Channel Letters • Pylon Signs  
Full Color Apparel Printing • Embroidery • Engraving  
Promotional Products ...

**Need help with innovative Ideas?**

**Give us a call!**

**2212 Palmer Hwy, Texas City, Texas**

**409-945-7446**

**sales@tntsigns.net**

**www.tntsigns.net**



**WHAT WOULD WE DO WITHOUT OUT SPONSORS? **NOTHING!** PLEASE SUBSIDIZE THEM WHEN YOU ARE ABLE, AND BE SURE TO THANK THEM FOR SUPPORTING THE BLUEGRASS MUSIC THAT YOU LOVE!**

**Texas Air Services, Inc**  
281-337-7763  
www.texasairservices.com



"A trusted partner in Aviation & Engineering Innovations"

**FULLER'S  
VINTAGE GUITAR**



**ROGER L. EKLUND**  
Residential Construction/Remodeling

**ROGER EKLUND**  
Owner

Estimates Available  
Design & Construction  
League City, Texas 77571  
reflexit@yahoo.com

40+ Years Experience

Mobile (281)543-2658



**SPACE CITY  
INSPECTIONS, LLC**

Professional Real Estate Inspectors  
www.spacecityinspections.com

**Ed Fryday**  
ASHI, TPREIA, TAREI, ICC, InterNACHI, HAR  
281-636-9419



Playing Music From America's Roots

**Brazos River Pickers**

www.brazosriverpickers.com

Toe-Tapping Bluegrass and Good Old-Time Music  
Guaranteed to liven up any event!

**Rex Mann**  
Mandolin/Vocals

For Bookings - Bob Young (713)249-8115

*The City  
of  
League City*

Bluegrass Music Rising in  
NW Houston

**Bluegrass Music Knight Out  
Show and Jam** 2nd Friday Each Mo.

and Monday Night Jam: 6-9pm  
\* Location (for both): Weekley Community Center,  
8440 Greenhouse Rd., Cypress, TX 77433

2nd Saturday Jam @ Krieb Woods Nature Ctr, Tomball, TX

Contact: Tony 281-373-1777, 281-910-4396;  
Website: www.bluegrassrising.net  
Email: [tonymema@earthlink.net](mailto:tonymema@earthlink.net); and Booking  
of "Almost Heaven Bluegrass Band"




**Lonestar Bluegrass Band**



Contact Chris Hirsch 281-491-1680  
chirsch@windstream.net  
www.lonestarbluegrassband.com

**Sabine River Band**  
Available for your events



409-781-1201 [sabineriverband.com/](http://sabineriverband.com/)





**Mary E. Conn  
& Associates**



**MARY E. CONN  
& ASSOCIATES**

The College  
of Law & Business

MARY E. CONN  
(713) 987-4390  
mconn@maryeconn.com

www.maryeconn.com

**The Pet Rooster Band**  
Diagrams with a few Variations








Available For Your Next Event:

- Bluegrass Festivals
- Private parties
- Family restaurants
- Church functions
- Monthly bluegrass clinics

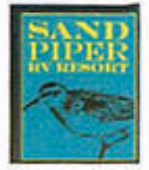
Joe • R. Lynn • Cathy • Doctor Phil

www.petroosterband.com • phone (979) 297-2709



**Rates & Reservations**  
[sndpiper325@aol.com](mailto:sndpiper325@aol.com)

**Sand Piper RV Park**  
Seawall Blvd & Ferry Road  
Galveston Island, Texas 77550  
409-765-9431 or 409-765-9409  
<http://sandpiperrvresort.com/>



## LOTS OF ROOM FOR MORE SPONSORS, FOLKS!

This goes out to over 300 musicians, music fans, and bluegrass music associations every month. As a sponsor, your ad also runs on the screen at the monthly shows in front of another 300 people. If the economy is great and you don't need to advertise, you can always support the arts AND claim a tax deduction - we're a 501(c)3 organization. **Help us, help you!**

Contact Rick Kirkland, [crk5820@msn.com](mailto:crk5820@msn.com) or call him at 281-488-2244 for more information.



**VACANCY**





**4 BIG DAYS \* MAY 23 - 26, 2019 \* SALMON LAKE PARK**

**247 Salmon Lake Road, Grapeland, TX 75844**



**David Davis and the Warrior River Boys**



**The Farm Hands**



**Christian Davis**



**Robertson County Line**



**The Baker Family**



**The Marksmen**



**The Family Sowell**



**East Mountain**



**Williamson Branch**



**Catahoula Drive**



**Tin Top Road**



### ORDER FORM

Call 936-697-5949 for  
Credit Card purchases

For info contact:  
coleebillier@aol.com  
936-697-5949  
www.TXBluegrassMusic.com

**By Mail** include order form  
with your check and mail to:

**Texas Bluegrass Music, LLC**  
P.O. Box 1303  
Magnolia, TX 77353

### The Floyd Salmon Memorial Day Weekend Gospel Music Festival

**EARLY BIRD REDUCED RATE 4-DAY PASS \$60 - by May 15, 2019**



**f** Texas Bluegrass Music  
at Salmon Lake Park



**Pay Pal | All Credit Cards | Checks or Cash**

Name: _____
Address: _____
Phone: _____
Credit Card: _____
I am paying for _____ tickets @ \$60 each (advance price)

*Children 15 & under Free with parents*

**WEDNESDAY:** Potluck at Pavillion at 6:00 pm

**CAMPING:** Over 400 Full Hook ups  
\$22/night for 30 & 50 amp  
Golf cart rental please call 936-687-2594 to  
reserve in advance.

#### ADMISSION:

Thursday: \$15  
Friday: \$20  
Saturday: \$25  
Sunday: \$15  
Weekend in advance: \$60 by May 15  
Weekend at the gate on Thursday: \$65





# AUGUST 29, 30, 31, SEPTEMBER 1, 2019



The Grascalls (Friday Only)



The Malpass Brothers (Saturday Only)



Edgar Lauder milk featuring Jeff Autry



Jeff Robertson and Friends



Sabine River Bend Band



The Marksman



Southern Style



Pine Island Station



Pet Rooster



Lonestar Bluegrass Band



## ORDER FORM

Call 936-697-5949 for  
Credit Card purchases

For info contact:  
coleebiller@aol.com  
936-697-5949  
www.TXBluegrassMusic.com

By Mail Include order form  
with your check and mail to:

Texas Bluegrass Music, LLC  
P.O. Box 1303  
Magnolia, TX 77353

## The 43rd Labor Day Bluegrass Music Festival EARLY BIRD REDUCED RATE 4-DAY PASS \$65 - by August 15, 2019



f Texas Bluegrass Music  
at Salmon Lake Park



**WEDNESDAY:** Potluck at Pavillion at 6:00 pm

**CAMPING:** Over 400 Full Hook ups  
\$22/night for 30 & 50 amp  
Golf cart rental please call 936-687-2594 to  
reserve in advance.

### ADMISSION:

Thursday: \$15  
Friday: \$25  
Saturday: \$25  
Sunday: \$15  
Weekend in advance: \$65 by Aug. 15  
Weekend at the gate on Thursday: \$70

Pay Pal | All Credit Cards | Checks or Cash

Name: \_\_\_\_\_  
Address: \_\_\_\_\_  
Phone: \_\_\_\_\_  
Credit Card: \_\_\_\_\_  
I am paying for \_\_\_\_\_ tickets @ \$65 each (advance price)

Children 15 & under Free with parents





# COUSHATTE RV RANCH PICKIN' & GRINNIN' MUSIC FESTIVAL

2012 Nelus Road • Bellville, TX 77418  
41 Miles West of Houston, TX



## • OCTOBER 24, 25, 26 2019 •



Chords of Grace



Christian Davis



Williamson Branch



Catahoula Drive



Edgar Laufermilk featuring Jeff Autry



The Farm Hands



Lonestar Bluegrass Band



Kristi Stanley and Running Blind



Kody Norris Band



David Davis and the Warrior River Boys



Rebekah Long



Sabine River Bend Band

### ORDER FORM

Call 936-697-5949 for  
Credit Card purchases

For info contact:  
coleebillier@aol.com  
936-697-5949  
www.TXBluegrassMusic.com

By Mail: Include order form  
with your check and mail to:  
Texas Bluegrass Music, LLC  
P.O. Box 1303  
Magnolia, TX 77353

### Cousshatte RV Ranch Pickin' & Grinnin' Bluegrass Music Festival EARLY BIRD REDUCED RATE 3-DAY PASS \$55 - by October 15, 2019

**WEDNESDAY:** Potluck on Wednesday in  
Stage Room at 6:00 pm

**CAMPING:** Over 200 Full Hook ups  
\$22/night for 20 & 30 amp

#### ADMISSION:

Thursday: \$15  
Friday: \$25  
Saturday: \$25  
Weekend by Oct. 15 for 3 Big Days: \$55  
Weekend at the gate on Thursday: \$60

Pay Pal | All Credit Cards | Checks or Cash

Name:	_____
Address:	_____
Phone:	_____
Credit Card:	_____
I am paying for _____ tickets @ \$55 each (advance price)	

Children 15 & under Free with parents



Texas Bluegrass Music  
at Salmon Lake Park



## SUPPORTING BANDS of the BAY AREA BLUEGRASS ASSOCIATION

**ALMOST HEAVEN:** Tony Redding, 281-373-1777, [tonynema@earthlink.net](mailto:tonynema@earthlink.net)  
[www.bluegrassrising.net/#!/about-our-band/clmys](http://www.bluegrassrising.net/#!/about-our-band/clmys)

**THE BLUEGRASS SOLUTION:** Mike Fuller, 281-989-8719, [mike@fullersguitar.com](mailto:mike@fullersguitar.com)  
[www.thebluegrasssolution.com](http://www.thebluegrasssolution.com)

**THE BRAZOS RIVER PICKERS:** Bob Young, 713-249-8115, [bob.young@spectracf.com](mailto:bob.young@spectracf.com)  
[www.brazosriverpickers.com](http://www.brazosriverpickers.com)

**BUFFALO NICKEL BLUEGRASS BAND:** Laney Sims, 346-901-1882,  
[laneysims55@gmail.com](mailto:laneysims55@gmail.com) [www.thebuffalonickebluegrassband.com](http://www.thebuffalonickebluegrassband.com)

**OLD DIRT ROAD BAND:** Dave Culbertson, 832-544-4373,  
[dculbertson@consolidated.net](mailto:dculbertson@consolidated.net)

**THE GREER FAMILY BAND (Brenham):** Lawrence Greer, 979-454-1120,  
[lgreer@txsun.net](mailto:lgreer@txsun.net) [www.greerfamilyband.com](http://www.greerfamilyband.com)

**THE LAUGHING LIZARDS STRING BAND:** Steve Bing, 225-405-9707,  
[stevebingmusic@aol.com](mailto:stevebingmusic@aol.com) [www.laughinglizardsband.com](http://www.laughinglizardsband.com)

**LONESTAR BLUEGRASS BAND:** Chris Hirsch, 281-788-3840, [cshirsch@windstream.net](mailto:cshirsch@windstream.net)  
[www.lonestarbluegrassband.com](http://www.lonestarbluegrassband.com)

**PET ROOSTER:** Lynn Holbrook, 832-584-5575, [info@petroosterband.com](mailto:info@petroosterband.com)  
[www.petroosterband.com](http://www.petroosterband.com)

**SABINE RIVER BEND BAND:** Earl Cochran, [earlcochranjr@aol.com](mailto:earlcochranjr@aol.com)  
[www.sabineriverbend.com](http://www.sabineriverbend.com)

**SOUTHERN STYLE:** Rick Kirkland, 281-488-2244, [crk5820@msn.com](mailto:crk5820@msn.com)  
[www.southernstylebluegrassband.com](http://www.southernstylebluegrassband.com)

**SOWELL FAMILY PICKERS:** Cindy Sowell, 979-251-2605  
[www.thesowellfamilypickers.com](http://www.thesowellfamilypickers.com)

**SKIDAWAY RIVER:** Doug Burtchaell, 281-380-0157 [dburtchaell@comcast.net](mailto:dburtchaell@comcast.net)

**WHITE DOVE:** Glen Beauboeuf, 832-289-7895 [glen\\_angieb@yahoo.com](mailto:glen_angieb@yahoo.com)  
Facebook - White Dove

Interested in adding your band to this list?  
Contact Lynn Holbrook at 832-584-5575  
or email him at [rlynnholbrook@gmail.com](mailto:rlynnholbrook@gmail.com)



## SWAP 'N' SHOP !

Ladies and gentlemen, this is an opportunity that doesn't come along very often.  
If you are a serious musician who is interested in a serious banjo, please look at what has recently come to our attention!

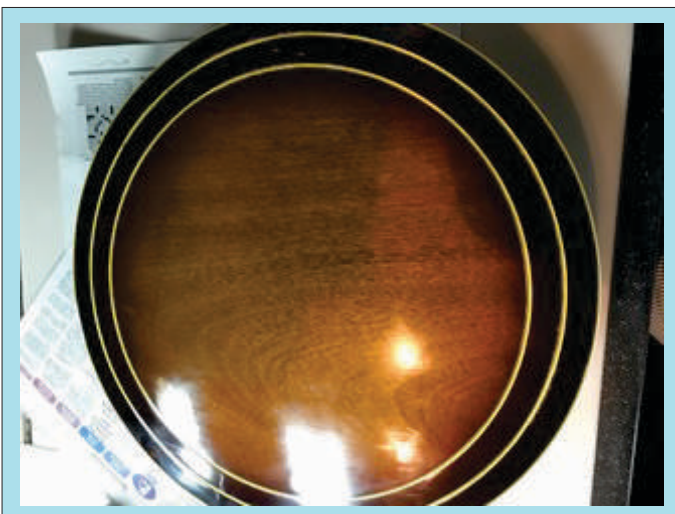
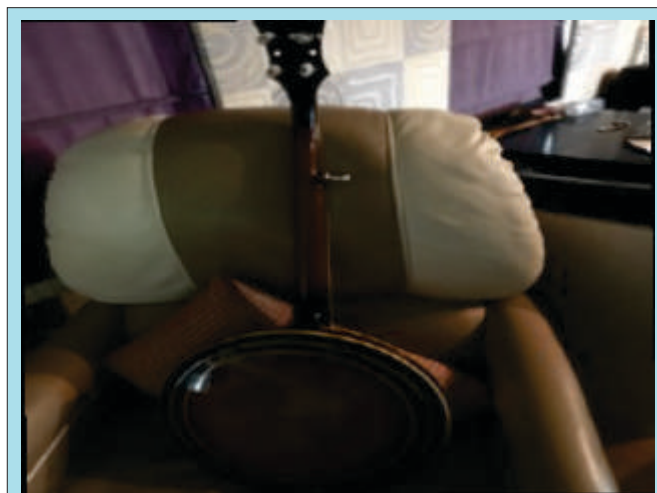
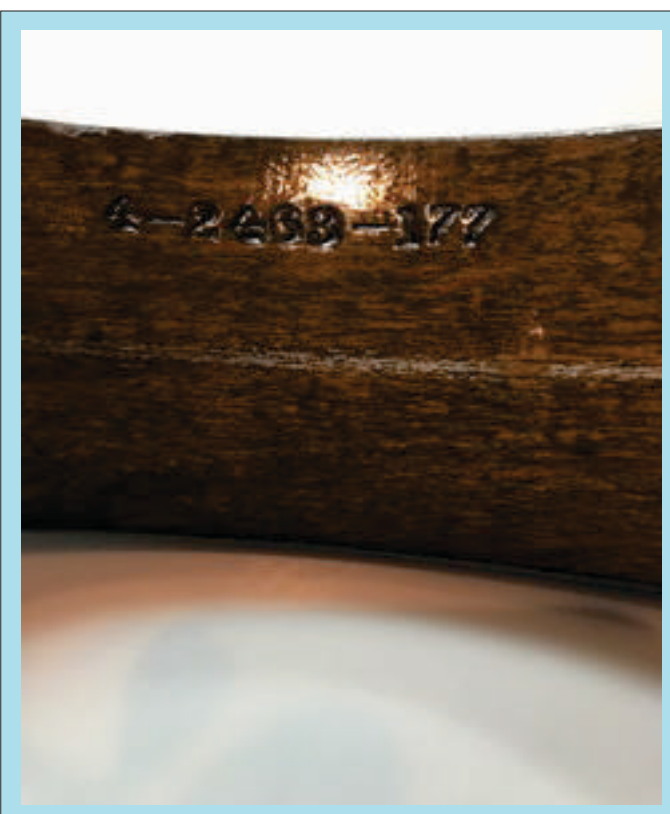
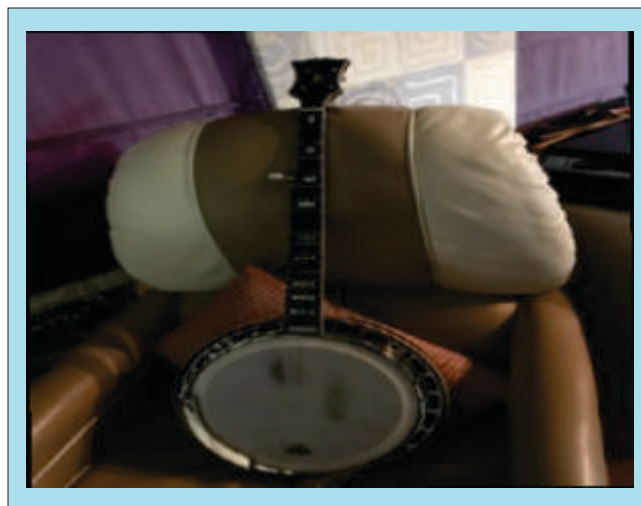
This is a 1954 Gibson RB 250, serial number as in the bottom right photo.

Asking price is \$2,750

Contact **Trip Wilcox** for more information.

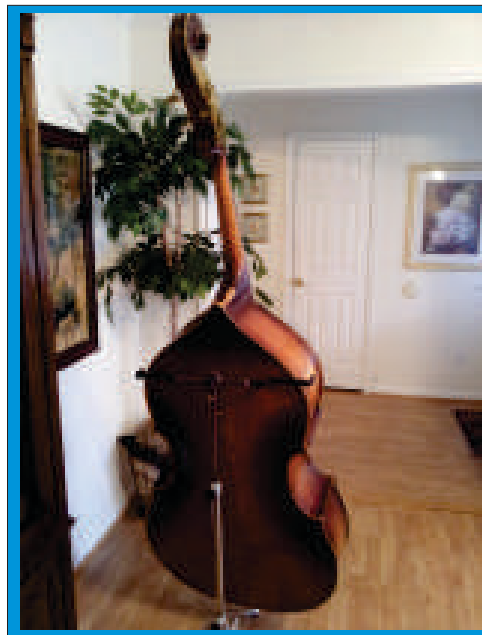
Phone 903-360-6706

Email [tripwilcox3@gmail.com](mailto:tripwilcox3@gmail.com)



# SWAP 'N' SHOP !

WHAT?! This beautiful Kay bass is for sale?!



This vintage beauty is from the 1940's, owned and lovingly tended by Becky Goodwin, can be yours!

Contact information:

**Hey LOOK!  
I fixed the  
email address!**

Phone 281-787-1124

Email [bluegrassbecky1@aol.com](mailto:bluegrassbecky1@aol.com)

Priced at only ~~\$2,800~~. Give her a buzz and find out more about this lovely instrument.

**HEY. LOOK!**

**Becky says she'll take \$1,800. Better get on it before she changes her mind!**

**BANJOS FOR SALE:** Contact Tim Martin, phone (281) 543-5957 or email [timmartin521@gmail.com](mailto:timmartin521@gmail.com)

Morgan Monroe Rocky Top 5 String Banjo w/hard case. Gold hardware, strap, new strings, 20 hole tone ring. Loud. Very good condition, just needs a little polishing.

\$450



Tyler Mountain 5 String Banjo w/hard case, 20 hole tone ring, strap, new strings. Very good condition, needs a little polishing. \$300 obo.





## SWAP 'N' SHOP !

### FOR SALE!

Iida 223 banjo - 5 string, from late 1980's or early 1990's, rarely played, excellent shape, includes case. Asking \$150



Call, text or email Kathy for more info - 713-409-9828, kpierpol1@yahoo.com

Instruments or music merchandise that needs a new home?  
contact the editor at bayareabluegrass2@aol.com.  
Include asking price, your contact information, and 2 or 3  
high-resolution photos. No charge, but donations welcome!

### About BABA

The Bay Area Bluegrass Association (BABA) was organized in 1986 and incorporated in 1987 under the Texas Non-Profit Corporation Act. The primary purpose of BABA is to preserve, encourage, and promote Bluegrass and Bluegrass gospel music as an American art form. BABA promotes Bluegrass through being active in community events, fund raisers, festivals, and monthly shows. BABA is a 501(c)(3) tax deductible organization; see any Director for information.

The monthly show is free to the public and features Bluegrass from the local and national scene. The stage show begins at 6:00 PM, but pickers are welcome to bring their instruments and come earlier to jam. Tasty, inexpensive food is available at the show, and there are raffles, door prizes, and Bluegrass merchandise for sale. This is a 'no alcohol' event, but there's plenty of music and great family fun!

Proceeds from donations, sponsors, memberships, sales, and raffles are used to keep the doors open and the regular shows free to the public. They also maintain and replace sound equipment, storage, security, and expense of keeping the music playing. We thank you for your attendance, your generosity, and your love of the music. 13



**Professional Real Estate Inspectors**

[www.spacecityinspections.com](http://www.spacecityinspections.com)

**Ed Fryday**

ASHI, TPREIA, TAREI, ICC, InterNACHI, HAR

**281-636-9419**



## MUSIC LESSONS

Violin, Viola, Piano & Fiddle

**HALLIE REEVES**

**(713) 477-2730**



**Colee and David Littlefield**  
*Festival Management/Promoters*

**Salmon Lake Park**    **Coushatta Recreational Ranch**

26717 Bayou Tesch Dr.    [www.TXBluegrassMusic.com](http://www.TXBluegrassMusic.com)    c. 936-697-5949  
Magnolia, TX 77354    [coleebiller@aol.com](mailto:coleebiller@aol.com)    c. 281-259-5453



**HALLIE REEVES**

strolling "gypsy" violinist

Balloon Deliveries    Phone-A-Fiddle-Grams  
Dinners, Weddings, Reception, Etc.

**Classical Pops Music**

**713-477-2730**

# VACANCY

Your ad could be here, reaching 300+ bluegrass music fans every month.

### ADD-ONS TO THE BLUEGRASS JAMS!

Until we get time to reformat the whole list, this is the overflow page for some 'not-too-far-from-Houston' jams. Thanks to Tony & Nema Redding for the info!

At the Weekley Community Center, 8440 Greenhouse Road (North @ Longenbaugh Road), Cypress, TX 77433, please make note of the following:

**Every Monday, 6:30 to 9:00 PM, Rooms 403 and 404**

**Second Friday** Show and Jam, Show is 6:15 to 8:30 PM and the Jam is 4:00 to 8:45 PM in the auditorium.

**Contact:** [tonynema@earthlink.net](mailto:tonynema@earthlink.net) or phone 281-910-4396



## Anton "Tony" Ullrich

is celebrating 47 years (1972 - 2019) of teaching folks in the greater Houston area to play Bluegrass style banjo.

Your private banjo lessons begin with an introduction to BanjerTab's unique approach to creating syncopation (that 'ahead of the beat' bounce) that you hear in the recordings of the first generation greats, who had no other form of learning than creating their banjo style 'as they went.'

Once you're familiar with BanjerTab, choose the area of playing you want to focus on: Scruggs style, full-chord back-up, mid-neck / high-neck picking, melodic style (fiddle tunes /back-up), or specific songs you have always wanted to play.

The expertise gained through 56 years of playing and 47 years of teaching is available to you now. Choose videotape lessons or come for private lessons in Houston.

Call 713-785-6655 or fax 713-532-6655



**Authorized Deering Banjo Dealer**  
**Home of the Texas Banjo**

[anton@banjerproductions.com](mailto:anton@banjerproductions.com)  
[www.5stringbanjer.com](http://www.5stringbanjer.com)

## World Music

3750 Cartwright Rd.  
**281-403-1615**

- 🌐 We teach ALL INSTRUMENTS, including voice
- 🌐 DVD Video & CD Audio Recording
- 🌐 Instrument Sales
- 🌐 Repair & Rental



*GIFT  
certificates  
available*



409-945-7446 or [sales@tntsigns.net](mailto:sales@tntsigns.net)  
2212 Palmer Hwy, Texas City, TX 77590

# A BIG BLUEGRASS THANKS!

to our members who help keep the music playing every month, and an extra shout out to those who have joined as Gold Club, Lifetime, Endowment and Foundation levels. We couldn't do this without all of you!

**Members' names are in alphabetical order**

## Gold Club Members

Doug Averitt, Mike & Pat Conwell, Dr. John Doyle, Mack Himel, Rick Kirkland family, Robert Manning, Ronald Moore, Marlene Payne, Laney & Shannon Sims

*Membership in the Gold Club is payable annually. We thank you for your "extra" support.*

**BABA Lifetime Members:** Brad & Dee Alford, Dave Aldrich, Scott & Diana Armstrong, Doris Arnett, Chris Bagley, Hubert & Shirley Brasseaux, Cara Cooke, Eric & Kim Corgey, Lyman & Annis Cox, Paul & Dana Cutts, Robert & Debi Duke, Bill & Joni Dusenbury, Roger & Pauline Eklund, Harry Edwards, John Ellisor, Ruth Evans, George Franklin, Jason & Alicia Fricke, Ed & Becky Fryday, Paul & Lillie Futch, John & Jean Gardner, Bill & Geri Gatlin, J.B. & Nancy Graham, Jim & Sharon Greenlee, Doris Grigg, Chuck & Mary Pat Gunn, Robert & Elizabeth Hasserd, Tom Harrison, Ron & Anne Hayden, Lynn Holbrook, Arvin & Sheryl Holland, Sammy & Ottie Holloway, Jan Johnston, Stan Jones, Paul & Linda Kerr, David & Colee Littlefield, Ken & Wanda MacDonnell, Phil & Cecile Mathers, Paul & Madeline McKneely, Faber & Sandy McMullen, Patrick Milligan, Barbara Monroe, Charles & Ellen Orsburn, Mike Petitt, Bill & Glenna Pierpont, Norman Ponder, Billy Potts, Tony & Nema Redding, Karl Reid, Jack (R.I.P.) & Carol Ritter, Tom & Sandy Roberts, Jonathan & Kristine Samuell, Billy & Terry Schmidt, Jerry & Monica Scribner, Gordon Spaulding, O.K. & Sharon Stafford, Bob & Marilyn Taylor, James & Laura Taylor, Scott Teven, Charlene Threlkeld, David Towery, Helen Vinson, Viola Wakefield, Larry Wenner, Paul Williams.

## Endowment Gift Members:

Phil & Fern Deans, Pat Lomas, Lisa Maranto



## Foundation Members:

Ed Fryday, Mike Fuller, Chris Bagley



## PICK YOUR NEWS

Hey folks... if you haven't been paying attention at Bluegrass Today online, you're missing some pretty great information. See the detailed stories with the headlines at

<https://bluegrasstoday.com/>

Sam Bush accepts honorary doctorate at WKU  
Largest turnout ever for Doyle Lawson Festival  
New Freedom Blues – Town Mountain

**Editor's note:** In case you haven't read Rick's front page note every month, he wasn't kidding. **We're losing worker bees faster than we're getting volunteers.** If you still want the benefit of the monthly shows, we need **H. E. L. P.**

Membership  
BABA table  
Sound  
Set-up

Newletter  
Billing (Ads & Membership)  
Pass the Bucket  
Food Table

Member drawing Prizes  
Backup Photographer  
Take-down

**See Rick or Roger or Arvin**



\*\*\*\*\*



# WHODUNIT AT THE LAST SHOW?

Could we put on ANY shows without our volunteers? **NO!** Tell them thank you when you pass by one of 'em.

## BANDS

**Southern Style  
The Old Dirt Road Band  
The Dead Girl Songs Band**

## EMCEE

**Arvin Holland**

## SET UP & TAKE DOWN

**O. K. Stafford, Roger Eklund,  
Doug Lindsay,  
Arvin Holland, Rick Kirkland**

## SOUND

**Roger Eklund**

## FOOD

**Sheryl Holland,  
Elaine Bergeron**

## TABLE & MEMBERSHIP

**Sharon Stafford,  
Judy Sturgeon**



Are you and your bluegrass or bluegrass gospel band interested in playing at one of our regular monthly shows in League City?

We're always happy to have our regular great bands for repeat performances, or new groups to spice things up a bit!

Contact Lynn Holbrook at 832-584-5575  
or email him at [rllynnholbrook@gmail.com](mailto:rllynnholbrook@gmail.com)

## SLOW JAM

**Robert Duke**

## PHOTOS

**Travis Posey**

# BE SURE TO THANK THEM!

# PHOTOS

SEE THEM ALL AT:

**Thanks to the iPhone for the photos from the March show. They ain't like Travis's real photos...**

<https://baba123.smugmug.com/MUSIC>

No WAY I can put all of the great pix on one page.  
See if your mug is captured on the website! Link above



Southern Style



The Old Dirt Road Band



The Dead Girl Songs Band



**Looks like everybody's having fun, doesn't it? JOIN US!**





# MEMBERSHIP LEVELS

[JOIN: at the show, or online](#)

## **Individual Membership:** \$35.00 annually

You'll become a member of the BABA family and support the free monthly shows & jams. You'll receive the BABA Bulletin Newsletter monthly, admission to workshops at the monthly shows, admission to Bluegrass in the Park for BABA members & guest, updates about Bluegrass events in the area, discounts on some bluegrass shows in the area – as well as the satisfaction of supporting BABA and Bluegrass Music in Texas.

## **Family Membership:** \$50.00 annually

You'll become a member of the BABA family with all the benefits of the individual membership for you and your immediate family. You'll support the free monthly shows & jams, receive the BABA Bulletin Newsletter monthly, get admission to workshops at the monthly shows and admission to Bluegrass in the Park for BABA members & guest, get updates about Bluegrass events in the area, discounts on some bluegrass shows in the area - and the satisfaction of supporting BABA and Bluegrass Music in Texas.

## **Gold Club Membership Individual:** \$100.00 annually

Get all the benefits of the individual membership, a Gold Club Membership Name Badge, & a BABA shirt for giving that extra support to the BABA family. You'll become a member of the BABA family and support the free monthly shows & jams, receive the BABA Bulletin Newsletter monthly, get admission to workshops at the monthly shows, admission to Bluegrass in the Park for BABA members & guest, updates about Bluegrass events in the area, discounts on some bluegrass shows in the area - and the satisfaction of supporting BABA a little extra.

## **Lifetime Member Individual:** \$350.00

Get all the benefits of BABA membership for life! You'll become a member of the BABA family and support the free monthly shows & jams, and receive the BABA Bulletin Newsletter monthly. You'll get admission to workshops at the monthly shows, admission to Bluegrass in the Park for BABA members & guest, updates about Bluegrass events in the area, discounts on some bluegrass shows in the area - and the satisfaction of supporting BABA for life.

## **Lifetime Member Family:** \$500.00

Get all the benefits of BABA membership for life for you and your immediate family! You'll become a member of the BABA family and support the free monthly shows & jams, and receive the BABA Bulletin Newsletter monthly. You'll get admission to workshops at the monthly shows, admission to Bluegrass in the Park for BABA members & guest, updates about Bluegrass events in the area, discounts on some bluegrass shows in the area - and the satisfaction of supporting BABA for life.

## **Lifetime Gold Club Membership Individual:** \$1000.00

Get all the benefits of the individual membership, A Gold Club Membership Name Badge, A BABA shirt, and knowing that you are giving that extra support to the BABA family. You'll become a member of the BABA family and support the free monthly shows & jams. You'll receive the BABA Bulletin Newsletter monthly, admission to workshops at the monthly shows, admission to Bluegrass in the park for BABA members & guest, updates about Bluegrass events in the area, discounts on some bluegrass shows in the area -and the satisfaction of supporting BABA 'above and beyond'.

## **Texas Bluegrass Jams & Shows**

Combined list from Bay Area Bluegrass Association and Central Texas Bluegrass Association: If you're in Southeast to Central Texas, bring your instruments because we're going to find you a place to pick and jam.

**PLEASE notify us** at [bayareabluegrass2@aol.com](mailto:bayareabluegrass2@aol.com) if you find any errors, or have a jam that you'd like changed, added or deleted. We list by day of the week, then by town/city.

### **Mondays**

**Bluntzer:** 3<sup>rd</sup> Monday, 2-6 PM, South Texas Bluegrass Gospel Jam, G&H BBQ, 5491 Hwy 624. phone 361-387-4552  
Email [stx.bluegrass@gmail.com](mailto:stx.bluegrass@gmail.com),

**Cypress:** Every Monday 6:30-9:00 PM, Weekly Community Center, 8440 Greenhouse Rd (North @ Longenbaugh) Rooms 403 & 404 Email [tonynema@earthlink.net](mailto:tonynema@earthlink.net), phone 281-373-1777

**San Antonio:** 2<sup>nd</sup> & 4<sup>th</sup> Mondays, 7 PM, "Monday-in-a-Jam" at Grady's BBQ, 327 E. Kakoma Dr., 78216. Phone Peyton Starr 210-870-4321 or Sheryl Sultenfuss (no phone listed)

### **Tuesdays**

**Llano:** 1<sup>st</sup> & 3<sup>rd</sup> Tuesday, 7 PM, Beginner/Intermediate, 1<sup>st</sup> Presbyterian Church. Phone Jeff White 325-248-4114

**Medina:** 2<sup>nd</sup> Tuesday, All Gospel Jam, 6 PM, 1<sup>st</sup> Baptist Church. Phone Linda Barton, 830-589-2486

**Nassau Bay:** 1<sup>st</sup> Tuesday, 7-@9 PM at Fuddruckers, 2040 NASA Pkwy, 281-933-1620

**Shulenburg:** 1<sup>st</sup> & 3<sup>rd</sup> Tuesday, 6:30-9:30, Shulenburg RV Park Clubhouse. Phone Loretta Baumgarten 979-743-4388 or Email [camp@ShulenburgRVPark.com](mailto:camp@ShulenburgRVPark.com)

**Sugarland:** 6:30 to 9:00 PM, 1st Presbyterian Church, 502 Eldridge Rd, Sugarland. Bluegrass and accoustic instruments only. Contact [samgrice@windstream.net](mailto:samgrice@windstream.net) or 832-428-3165

### **Wednesdays**

**Austin:** 1<sup>st</sup> Wednesday, 7-10 PM, Musician's Woodshed, 3698 RR 620 South, Ste. 107, 78738, [themusicianswoodshed.com](http://themusicianswoodshed.com)

**Houston:** each Wednesday, 6-9 PM, at Hickory Hollow, 100 Heights Blvd, Houston (just south of I 10 on Heights Blvd)

**Houston:** 4<sup>th</sup> Wednesday 7PM to 9PM, Old Time Music jam, Pizza Inn, 1801 Mangum Rd, @W 18th & Mangum Rd just outside the NW Loop. Contact Steve Bing, 225-405-9707

### **Thursdays**

**Austin:** 1<sup>st</sup> & 3<sup>rd</sup> Thursdays, 7 PM, Bruce Manbridge's home. **Contact Steve Mangold for all Austin Jam info, 512-345-6155**

**Cypress:** Every 3<sup>rd</sup> & 5<sup>th</sup> Thursday, 12:30 - 3PM, Weekly Community Center, 8440 Greenhouse Rd, Cypress. Email: [tonynema@earthlink.net](mailto:tonynema@earthlink.net) or phone 281-373-1777

**Georgetown:** Every Thursday, 5:30-7:30 PM, Duke's BBQ. Email [sigi@sigi.us](mailto:sigi@sigi.us), phone 512-869-8076

**Groves:** Every Thursday, 7 PM, Allie Morvent's House, phone 409-962-5236

**Manchaca:** Every Thursday, 6:30-9 PM, Manchaca Railroad BBQ, FM 1626. Phone Dave 512-680-4433

### **Fridays**

**Bandera:** 4<sup>th</sup> Friday, 6:30 PM, Silver Sage Corral, east of Bandera. For info, phone 830-796-4969

**Carthage:** 1<sup>st</sup> Friday, 6:30 PM, Town Square. For info, phone 903-678-3857

**Cypress:** 2<sup>nd</sup> Friday, show 6:30-9:00 PM, Jam 4 - 8:45 PM, Ausitorium. Weekly Community Center, 8440 Greenhouse Rd, (North @ Longenbaugh) Rooms

403 & 404 Email [tonynema@earthlink.net](mailto:tonynema@earthlink.net), phone 281-373-1777 or check the website [www.bluegrassrising.net](http://www.bluegrassrising.net)

**Hondo:** 1<sup>st</sup> Friday, begins 11 AM, Hondo Hootenany. Hondo Community Center, 1014 18<sup>th</sup> St. Phone 830-426-2831

**Utopia:** 3<sup>rd</sup> Friday, 7 PM, Senior Citizen's Center. Phone Skip Doerr 830-966-6362

**Victoria:** 3<sup>rd</sup> Friday, Slow Jam 5-7 PM, regular jam 7-10 PM, American Legion Post #166, 1402 E. Santa Rosa. Free Admission. Email [crossroadsbluegrass@yahoo.com](mailto:crossroadsbluegrass@yahoo.com) or phone Stan Kendrick 361-935-4413 or Gary Moses 361-550-5466

### **Saturdays**

**Alvin:** Every Saturday, Texas Opry, no time given, 1720 Sealy, Admission is charged. Phone 281-432-2942

**Austin:** 2<sup>nd</sup> & 4<sup>th</sup> Saturdays, 3 to 6 PM, all levels, CTBA sponsored. 3801 Berkman Dr., 78723.

**Beaumont:** 4<sup>th</sup> Saturday, no time listed, Rosedale Baptist Church, 7110 Concord. S.E. Texas Dulcimer Friends. Phone 409-866-0848

**Bellville:** 4<sup>th</sup> Saturday, 4 PM jam & 6 PM show Jan through Sept, Coushatta RV Ranch, Email [coleebiller@aol.com](mailto:coleebiller@aol.com), phone 936-697-5949, website [www.TXBluegrassMusic.com](http://www.TXBluegrassMusic.com)





Here's the rest of the jam and show schedule! 'pick' your favorite.....

### **Saturdays continued**

**Fayetteville:** 2<sup>nd</sup> Saturday, 6 PM April – Nov, Courthouse Square. Email [info@texaspickinpark.com](mailto:info@texaspickinpark.com) or see [www.texaspickinpark.com](http://www.texaspickinpark.com)

**Field Creek:** 1<sup>st</sup> Saturday, 6 PM, Field Creek Music. Field Creek is between Llano and Brady on Hwy 71. Phone Bill Tuckness 325-247-3223

**Garland:** Every Saturday March – Nov, 7:30 PM – 1 AM, between Main & State Sts. @ 6<sup>th</sup> St.

See the website: [www.meetup.com/bluegrass-142](http://www.meetup.com/bluegrass-142)

**Glen Rose:** 3<sup>rd</sup> Saturday, no time listed, Oakdale Park, Paluxy River Bluegrass Assoc., free stage show, camping encouraged. Phone John Scott 817-525-0558

**Grapevine:** 2<sup>nd</sup> Saturday, 215 Jenkins St, Grapevine from noon to 4:00 PM; Southwest Bluegrass Association

**Harwood:** 3<sup>rd</sup> Saturday, 2 -9 PM, Jam & Stage Show. 9 mi. E. of Luling, Hwy 90. Tony Conyers 512-601-1510 ; 512-940-3731

**Henderson:** 1<sup>st</sup> Saturday, 6 PM, Odd Fellows Hall. Phone 903-889-2783 or 903-566-6650

**Houston:** 2<sup>nd</sup> Saturday, 7:30 PM, Admission charged and not always bluegrass, Houston Folklore Society, West University Community Building, 6104 Auden. Phone 281-347-3235

3<sup>rd</sup> Saturday, 3-6 PM, Woodland Christian Church, 607 Rogers, North Harris County Dulcimer Society. No phone listed.

**Huntington:** Nothing going on any more. Find a new jam? email the editor at [bayareabluegrass2@aol.com](mailto:bayareabluegrass2@aol.com)

**League City:** 3rd Saturday, 5-11 PM jam, 6-9 PM show, 400 W. Walker St @ the Civic Center, Bay Area Bluegrass Assoc. Phone 281-488-2244

**Liberty Hill:** 4<sup>th</sup> Saturday, 1-6 PM, Hwy 29 West. Phone Paula 512-778-5410

**Llano:** 1<sup>st</sup> Saturday, 6 PM, Field Creek Music. Field Creek is between Llano and Brady on Hwy 71.

Phone Bill Tuckness 325-247-3223

4<sup>th</sup> Saturday Jan – Oct, 5:30 – 10:30 PM, Bluegrass in the Hill Country Jam, The Badu House.

Email [info@bluegrassinthehillcountry.org](mailto:info@bluegrassinthehillcountry.org)

**Magnolia:** 1st Saturday, Jam @ 4 PM, stage show 6-9 PM featuring 3-4 local bands. Texas Olde Tyme 1st Saturday Bluegrass Jam, West Montgomery County Community Development Center, 31355 Friendship Drive, Magnolia TX 77355-2603. Contact Bobby Stem 281-744-7652 Website: [www.totbgb.com](http://www.totbgb.com)

**Marshall:** 3<sup>rd</sup> Saturday, 7 PM Show, Lions Community Center, 1201 Louisiana St. Phone 903-935-7023

**Minden:** 3<sup>rd</sup> Saturday, 5:30 PM, Community Center. Phone 903-657-3320

**Montgomery:** 1st Saturday, The Garrett House. May be cancellations due to weather/scheduling; Contact Lonnie Clover at [lrclover@msn.com](mailto:lrclover@msn.com) before travelling. Jam starts @ 10 AM until 2 PM or so.

**Needville:** 1<sup>st</sup> Saturday, 6 PM-8 PM concert. Brazos River Pickers perform free at Brazos Bend State Park in the amphitheater. Concert is free but usual State Park Entry fees apply. Phone 281-344-0601 or website [www.brazosriverpickers.com](http://www.brazosriverpickers.com)

**Odessa:** 2nd Saturday, Noon to 6 PM, Jam and potluck dinner for pickers and for grinners (guests welcome): Acoustic only with exception for bass; Music is Bluegrass, Old Time Country, Gospel and 'other'. No smoking or alcohol. 4400 Andrews Highway @ Jesus Connection Church, Odessa Contact Pete & Claudette Stull, ph: 432-362-6944, email: [wb7amp@cableone.net](mailto:wb7amp@cableone.net)

**Pearl:** 1<sup>st</sup> Saturday, 1 PM, Pearl Bluegrass Jam & Show. Old School House on FM 183 (not US 183).

**Purmela.** RV hookups available. Phone Ronald Medart 254-865-6013 or website [www.pearlbluegrass.com](http://www.pearlbluegrass.com)

**Round Rock:** 3<sup>rd</sup> Saturday, 2-5 PM, Danny Ray's Music, 12 Chisholm Trail. Phone 512-671-8663 or website <http://dannyraysmusic.com>

**Sacul:** 4th Saturday, 6:30 PM, Opry House, Hwy 204 (25 mi. SE of Jacksonville). Phone 903-586-8484 or 409-326-4544

**Sulphur Springs:** 3<sup>rd</sup> Saturday, October through March. No time listed. 400 Como St. Phone 903-885-4078 or 903-885-7063

**Tomball:** 4<sup>th</sup> Saturday, noon - 4PM, Kleb Woods Nature Center, 20303 Draper Rd (@ Muschke Rd) Tomball 77377 Email [tonynema@earthlink.net](mailto:tonynema@earthlink.net) or phone 281-910-4396.

**Walker, LOUISIANA:** in case you sneak across the border. 4<sup>th</sup> Saturday, no time listed, Old South Jamboree, U.S. Hwy 190. Phone 504-664-3630

**Wrightright:** 4th Saturday, 7 PM, Opry House. Phone 903-364-2539

### **Sundays**

**Austin:** every Sunday, 2 PM, Hill's Café, 4700 South Congress Avenue, Austin, Texas 78745 \*\*\*Site Change!

**Corpus Christi:** 2<sup>nd</sup> Sunday, 2 PM, Heritage Park. South Texas Bluegrass Association, Phone Bill Davis 361-387-4552

**SEE: the overflow jam info on page 14 at the bottom!**



**PRESIDENT**

Rick Kirkland

**VICE-PRESIDENT**

Laney Sims

**TREASURER**

Roger Eklund

**SECRETARY**

Judy Sturgeon

**DIRECTORS**

Phil Deans

Travis Posey

Arvin Holland

Lynn Holbrook

Don Meade

Greg English

**WEBMASTER**

Travis Posey

tposey123@yahoo.com

**EDITOR**

bayareabluegrass2@aol.com

**BABA INFO**

281-488-2244



**TO ALL FUDDRUCKER'S JAMMERS:**

If you like the Fudd's jams but haven't been getting your monthly email reminder, shoot us an email request at: bayareabluegrass2@aol.com. If you'd like to be added to the list, just let us know!

**Join us at Fuddrucker's, NASA Parkway, on the FIRST TUESDAY of every month for dinner and jamming. Turn in a BABA 'coupon' and we will receive a percentage of your food and drink purchase price as a donation from Fudd's. Great food, great friends, great bluegrass....how good can it get?! See Rick Kirkland for a coupon at the Jam.**

**BLUEGRASS RADIO WAVES & INTERNET SITES**

**KNES - FM 99.1 SUN 2-5 PM** Fairfield, Carl Conkling

**KEOS - FM 89.1 TUES 7-9 PM** College Station, John Roths

**KPFT - FM 90.1 SUN 4-6 PM** Houston, Chris Hirsch

**KVLU - FM 91.3 SAT 7-9 PM** Beaumont

**KOOP - FM 91.7 SUN 10 AM-NOON** Austin, Sharon Sandormirsky/  
Ted Branson/ Rod Moog

**KKUS - FM104.1 9-10 AM** Tyler, Dave Rousseau

**KSHN - FM 99.9 SAT 8:30-10:30 PM** Liberty, Roy Bennett

**KSYM - FM 90.1 SUN NOON-2 PM** San Antonio, Hank Harrison

**KJIC - FM 90.5 SAT & SUN 6 AM-6 PM** Houston, Believers Bluegrass

**KAMU - FM 90.9 SAT 7-8 PM** College Station, Dave Higgs (Nashville)

[www.bayareabluegrass.org](http://www.bayareabluegrass.org) <http://www.pick-n-bow.com>

[www.bluegrassdog.com](http://www.bluegrassdog.com)

[www.bluegrassheritageradio.com](http://www.bluegrassheritageradio.com)

[www.bluegrassmusicjams.com/jam-texas.html](http://www.bluegrassmusicjams.com/jam-texas.html)

[www.centraltexasbluegrass.org](http://www.centraltexasbluegrass.org)

[www.cybergrass.com](http://www.cybergrass.com)

<http://ibma.org>

[www.southwestbluegrassclub.org](http://www.southwestbluegrassclub.org)

[www.spbgma.com](http://www.spbgma.com)

[www.TXBluegrassMusic.com](http://www.TXBluegrassMusic.com)

[www.westtexasbluegrasstraditionalmusicassociation.com](http://www.westtexasbluegrasstraditionalmusicassociation.com)



The BABA Bulletin would like feedback and Bluegrass articles from our readers. Tidbits or articles can be: an amusing quote; reviews of festivals or music conventions; behind-the-scenes reports of bands; technical; RV and campground reviews; anything that you feel would be of interest to Bluegrass enthusiasts. Articles can span more than one issue, and full credit will be given. Original, uncopyrighted work only, please and thank you!



## Thinkin' and Grinnin' (Weather you like it or not)

### WEATHER IN THE UNITED STATES:



### WEATHER IN TEXAS:



<http://ibma.org/membership>

Support your local bluegrass music association. Memberships for adults start at \$40 dollars and the professional single membership is \$75.



### ADVERTISING RATES

#### Business Cards

\$50 per year

\$5 per issue

#### Quarter Page

\$75 per year

\$10 per issue

#### Half Page

\$150 per year

\$15 per issue

#### Full Page

\$300 per year

\$30 per issue

email for information:

[bayareabluegrass2@aol.com](mailto:bayareabluegrass2@aol.com)



## SUPPORT BLUEGRASS MUSIC

<http://www.bayareabluegrass.org/membership.html>

<https://ibma.org/membership>

<http://www.spbgma.com/membership.html>

