

February 2020



THE BABA BULLETIN

The Bay Area Bluegrass Association
5820 Misty Meadow, League City, TX 77573

Bluegrassing
Since 1987

PRESIDENT'S MESSAGE

**HEY THERE BLUEGRASS FANS.
ARE YOU READY FOR SOME BLUEGRASS???**

THANKS FOR COMING OUT LAST MONTH TO SEE OLD DIRT ROAD AND SOUTHERN STYLE.

WE HAD A REALLY GOOD TIME AND HAD A GREAT CROWD. (AS ALWAYS)

THIS MONTH PET ROOSTER WILL BE FEATURED AND I KNOW YOU DON'T WANT TO MISS THEM.

WE HAD A BAND CANCEL THIS MONTH SO THE LINEUP IS A WORK IN PROGRESS RIGHT NOW, BUT I THINK SOUTHERN STYLE, AND YOU NEVER KNOW WHO ELSE MIGHT SHOW UP SO PLAN ON A GREAT SHOW.

LYNN IS WORKING HARD ON IT AS WE SPEAK.

AS WE ANNOUNCED LAST MONTH, AFTER MANY YEARS WE'LL BE MOVING TO A NEW HOME SOON. WE'RE WORKING WITH SEVERAL LOCATIONS: WEBSTER, TEXAS CITY, FRIENDSWOOD, BAYTOWN, KEMAH, PASADENA, AND OTHER LOCATIONS IN LEAGUE CITY.

KEEP AN EYE ON THE NEWSLETTER AND YOUR EMAIL IF YOU'RE A BABA MEMBER. WE'LL ALSO BE POSTING ON THE WEBSITE (BAYAREABLUEGRASS.ORG) AND OUR SOCIAL MEDIA PAGES. (FACEBOOK, TWITTER)

BABA NEEDS YOUR HELP.

WE HAVE LOST 2 MEMBERS THAT, FOR MANY YEARS, HAVE BEEN PART OF THE BACKBONE OF BABA. JUDY AND LANEY HAVE RETIRED.

LIFE HAPPENS AND BOTH HAVE THEIR HANDS FULL HANDLING THINGS THAT JUST HAVE TO BE DONE.

WE WISH THEM BOTH ALL THE BEST.

I KNOW WE'LL SEE THEM AROUND, BUT THEY CAN'T KEEP DOING ALL THAT THEY'VE BEEN DOING. THIS IS LEAVING US WITH MORE WORK THAN THE CURRENT GROUP CAN HANDLE.

WE NEED HELP RUNNING THE SHOW OR THERE WON'T BE A SHOW.

WE'RE WORKING THE PEOPLE WE HAVE NOW TO DEATH AND WE CAN'T KEEP GOING LIKE THIS.

WE NEED SOMEONE TO TAKE OVER THE MEMBERSHIP DUTIES.

WE NEED HELP SETTING UP FOR THE SHOW, RUNNING THE SOUND SYSTEM, SETTING UP AND BREAKING DOWN THE SOUND SYSTEM, AND LOADING EVERYTHING UP AFTER THE SHOW.

WE ALSO NEED HELP RUNNING THE KITCHEN AND BABA TABLE.

JUST A LITTLE HELP WILL GO A LONG WAY.

**IF YOU ENJOY THE SHOW, AND WANT TO SEE IT CONTINUE,
WE NEED YOUR HELP!**

**ALSO, REMEMBER YOUR MEMBERSHIP DONATIONS KEEP THE DOORS OPEN.
KEEP ON PICKING
Rick**

Pick Your News

Show Lineup
What Happened?
Note-Worthy*
Supporting Bands
Membership Levels
Our Members
Stringing You Along
What Will Happen?*

Jams n' Shows
Swap n' Shop
Radio Info
Thinkin' n' Grinnin'
Photos
Whodunnit
Advertisements
Sponsors

*When available

PATIENCE PLEASE:

New newsletter
writers Amy and
Pauline Eklund

In case any of you wanted to know
what I'd like for Valentine's Day



Show Lineup!

PET ROOSTER SOUTHERN STYLE(?)

HERE
...for
now

Johnnie Arolfo Civic Center, 400 West Walker, League City, Texas

HERE
...for
now



HEY MEMBERS!

Be sure to stop at the BABA table, and get a MEMBER door prize ticket.

We give TWO great door prizes each month as part of your membership - no extra cost to you. Just get your ticket and cross your fingers!

P.S. You can join and renew there, too.

BLUEGRASS IN THE NEWS

WHAT HAPPENED?

BABA won an award for Best of League City 2020.
Details on the next page.



If you have a local event, please send a picture and short description for the newsletter.

We would love to see more bluegrass or events to put on our calendars

BLUEGRASS IN THE NEWS

WHAT HAPPENED?

**This was an email received earlier this month.
Ironie how it comes right before BABA has to change locations.
--Amy**

It is our pleasure to inform you that Bay Area Bluegrass Association has been selected for the 2020 Best of League City Awards in the category of Association or Organization.

**Best Regards,
League City Business Recognition**

From their website:

**Bay Area Bluegrass Association Receives 2020 Best of League City Award
League City Award Program Honors the Achievement**

LEAGUE CITY February 4, 2020 -- Bay Area Bluegrass Association has been selected for the 2020 Best of League City Award in the Association or Organization category by the League City Award Program.

Each year, the League City Award Program identifies companies that we believe have achieved exceptional marketing success in their local community and business category. These are local companies that enhance the positive image of small business through service to their customers and our community. These exceptional companies help make the League City area a great place to live, work and play.

Various sources of information were gathered and analyzed to choose the winners in each category. The 2020 League City Award Program focuses on quality, not quantity. Winners are determined based on the information gathered both internally by the League City Award Program and data provided by third parties.

About League City Award Program

The League City Award Program is an annual awards program honoring the achievements and accomplishments of local businesses throughout the League City area. Recognition is given to those companies that have shown the ability to use their best practices and implemented programs to generate competitive advantages and long-term value.

The League City Award Program was established to recognize the best of local businesses in our community. Our organization works exclusively with local business owners, trade groups, professional associations and other business advertising and marketing groups. Our mission is to recognize the small business community's contributions to the U.S. economy.

Note-Worthy

Fayetteville Picking Park

Lou-Lou Barbour

The musical bluegrass adventure that began with the *Texas Picking Park* over 10 years ago continues on as the newly named *Fayetteville Picking Park*.

As many know Dorothy and Hall started the *Texas Picking Park*, and it was very well attended for about 7 years. Tom Duplissey took charge of the Park for a few years, and it continued. Then, 4 years ago this July, a new group of people decided to keep the park going, and change it's name, when Tom decided to close it down.

Lou-Lou Barbour, with the help of Angela and Glen Beaufouef, now head up the park known as *Fayetteville Picking Park*.

It is still held on the 2nd Saturday of the month, but continues year-round excluding December. Many felt that some of the best jamming days were being missed when the park ran from May – November.

So now, whatever the weather, you will find a jam going on at the park. People usually begin showing up about 2 and the jamming usually ends at about 9.

News about the park can be found by joining the facebook page, *Fayetteville Picking Park*. If one is not on facebook, then they can be added to the email letter that gets sent each month. To get added to this list simply email Lou-Lou Barbour at Banjobooklady@yahoo.com.

The City of Fayetteville graciously allows jammers to use the two buildings on the square, the old courthouse and the firehouse, to play music in free of charge. There is also a gazebo that musicians can gather on, and there has been many a fine jam on it! There is no stage show, just bluegrass pickers doing what they love to do; pick, sing and make music for the sheer joy that it brings!

Angela and Glen bring coffee and cookies for snacks. When pickers and gridders get hungry, there are 2 good restaurants on the square, Joe's and Orsaks, that they can get a good meal at. Though the park is not as well attended as it was in the past, there is always a good jam to be found, and sometimes 3 or 4.

Many people don't seem to know that its still happening, so perhaps as more find out about it the attendance will grow.

So when the 2nd Saturday rolls around, gather up your instruments and family, and head to the *Fayetteville Picking Park*, and lets make some great Bluegrass memories!

SUPPORTING BANDS of the BAY AREA BLUEGRASS ASSOCIATION

ALMOST HEAVEN: Tony Redding, 281-373-1777, tonynema@earthlink.net
www.bluegrassrising.net/#!/about-our-band/c1mys

THE BLUEGRASS SOLUTION: Mike Fuller, 281-989-8719, mike@fullersguitar.com
www.thebluegrasssolution.com

THE BRAZOS RIVER PICKERS: Bob Young, 713-249-8115, bob.young@spectracf.com
www.brazosriverpickers.com

BUFFALO NICKEL BLUEGRASS BAND: Laney Sims, 346-901-1882,
laneysim55@gmail.com www.thebuffalonickebluegrassband.com

THE GREER FAMILY BAND (Brenham): Lawrence Greer, 979-454-1120,
lgreer@txsun.net www.greerfamilyband.com

THE LAUGHING LIZARDS STRING BAND: Steve Bing, 225-405-9707,
stevebingmusic@aol.com www.laughinglizardsband.com

LONESTAR BLUEGRASS BAND: Chris Hirsch, 281-788-3840, cshirsch@windstream.net
www.lonestarbluegrassband.com

OLD DIRT ROAD BAND: Dave Culbertson, 832-544-4373,
dculbertson@consolidated.net

OUT OF THE BLUE SEABROOK: Greg English, 830-387-9156

PET ROOSTER: Lynn Holbrook, 832-584-5575, info@petroosterband.com
www.petroosterband.com

SABINE RIVER BEND BAND: Earl Cochran, earlcochranjr@aol.com
www.sabineriverbend.com

SKIDAWAY RIVER: Doug Burtchaell, 281-380-0157 dburtchaell@comcast.net

SOUTHERN STYLE: Rick Kirkland, 281-488-2244, crk5820@msn.com
www.southernstylebluegrassband.com

SOWELL FAMILY PICKERS: Cindy Sowell, 979-251-2605
www.thesowellfamilypickers.com

STRINGS OVER TEXAS: Lynn Holbrook, 832-584-5575

WHITE DOVE: Glen Beauboeuf, 832-289-7895 glen_angieb@yahoo.com
Facebook - White Dove

Interested in adding your band to this list?
Contact Lynn Holbrook at 832-584-5575
or email him at rllynnholbrook@gmail.com

MEMBERSHIP LEVELS

JOIN: at the show, or online

Individual Membership: \$35.00 annually

You'll become a member of the BABA family and support the free monthly shows & jams. You'll receive the BABA Bulletin Newsletter monthly, admission to workshops at the monthly shows, admission to Bluegrass in the Park for BABA members & guest, updates about Bluegrass events in the area, discounts on some bluegrass shows in the area – as well as the satisfaction of supporting BABA and Bluegrass Music in Texas.

Family Membership: \$50.00 annually

You'll become a member of the BABA family with all the benefits of the individual membership for you and your immediate family. You'll support the free monthly shows & jams, receive the BABA Bulletin Newsletter monthly, get admission to workshops at the monthly shows and admission to Bluegrass in the Park for BABA members & guest, get updates about Bluegrass events in the area, discounts on some bluegrass shows in the area - and the satisfaction of supporting BABA and Bluegrass Music in Texas.

Gold Club Membership Individual: \$100.00 annually

Get all the benefits of the individual membership, a Gold Club Membership Name Badge, & a BABA shirt for giving that extra support to the BABA family. You'll become a member of the BABA family and support the free monthly shows & jams, receive the BABA Bulletin Newsletter monthly, get admission to workshops at the monthly shows, admission to Bluegrass in the Park for BABA members & guest, updates about Bluegrass events in the area, discounts on some bluegrass shows in the area - and the satisfaction of supporting BABA a little extra.

Lifetime Member Individual: \$350.00

Get all the benefits of BABA membership for life! You'll become a member of the BABA family and support the free monthly shows & jams, and receive the BABA Bulletin Newsletter monthly. You'll get admission to workshops at the monthly shows, admission to Bluegrass in the Park for BABA members & guest, updates about Bluegrass events in the area, discounts on some bluegrass shows in the area - and the satisfaction of supporting BABA for life.

Lifetime Member Family: \$500.00

Get all the benefits of BABA membership for life for you and your immediate family! You'll become a member of the BABA family and support the free monthly shows & jams, and receive the BABA Bulletin Newsletter monthly. You'll get admission to workshops at the monthly shows, admission to Bluegrass in the Park for BABA members & guest, updates about Bluegrass events in the area, discounts on some bluegrass shows in the area - and the satisfaction of supporting BABA for life.

Lifetime Gold Club Membership Individual: \$1000.00

Get all the benefits of the individual membership, A Gold Club Membership Name Badge, A BABA shirt, and knowing that you are giving that extra support to the BABA family. You'll become a member of the BABA family and support the free monthly shows & jams. You'll receive the BABA Bulletin Newsletter monthly, admission to workshops at the monthly shows, admission to Bluegrass in the park for BABA members & guest, updates about Bluegrass events in the area, discounts on some bluegrass shows in the area -and the satisfaction of supporting BABA 'above and beyond'.

A BIG BLUEGRASS THANKS!

to our members
who help keep the music playing every month, and an extra shout out to those who have joined as Gold Club, Lifetime, Endowment and Foundation levels. We couldn't do this without all of you!

Members' names are in alphabetical order

Gold Club Members

Doug Averitt, Mike & Pat Conwell, Dr. John Doyle, Mack Himel, Rick Kirkland family, Robert Manning, Ronald Moore, Marlene Payne, Laney & Shannon Sims

Membership in the Gold Club is payable annually. We thank you for your "extra" support.

BABA Lifetime Members: Brad & Dee Alford, Dave Aldrich, Scott & Diana Armstrong, Doris Arnett, Chris Bagley, Hubert & Shirley Brasseaux, Cara Cooke, Eric & Kim Corgey, Lyman & Annis Cox, Paul & Dana Cutts, Robert & Debi Duke, Bill & Joni Dusenbury, Roger & Pauline Eklund, Harry Edwards, John Ellisor, Ruth Evans, George Franklin, Jason & Alicia Fricke, Ed & Becky Fryday, Paul & Lillie Futch, John & Jean Gardner, Bill & Geri Gatlin, J.B. & Nancy Graham, Jim & Sharon Greenlee, Doris Grigg, Chuck & Mary Pat Gunn, Robert & Elizabeth Hasserd, Tom Harrison, Ron & Anne Hayden, Lynn Holbrook, Arvin & Sheryl Holland, Sammy & Ottie Holloway, Jan Johnston, Stan Jones, Paul & Linda Kerr, David & Colee Littlefield, Ken & Wanda MacDonnell, Phil & Cecile Mathers, Paul & Madeline McKneely, Faber & Sandy McMullen, Patrick Milligan, Barbara Monroe, Charles & Ellen Orsburn, Mike Petitt, Bill & Glenna Pierpont, Norman Ponder, Billy Potts, Tony & Nema Redding, Karl Reid, Jack (R.I.P.) & Carol Ritter, Tom & Sandy Roberts, Jonathan & Kristine Samuell, Billy & Terry Schmidt, Jerry & Monica Scribner, Gordon Spaulding, O.K. & Sharon Stafford, Bob & Marilyn Taylor, James & Laura Taylor, Scott Teven, Charlene Threlkeld, David Towery, Helen Vinson, Viola Wakefield, Larry Wenner, Paul Williams.



Endowment Gift Members:

Phil & Fern Deans, Pat Lomas, Lisa Maranto

Foundation Members:

Ed Fryday, Mike Fuller, Chris Bagley



Editor's note:

In case you haven't read Rick's front page note every month, he wasn't kidding.

We're losing worker bees faster than we're getting volunteers.

If you still want the benefit of the
monthly shows, we need **H. E. L. P.**

Billing (Ads & Membership) Member drawing Prizes

Membership

Pass the Bucket

Backup Photographer

BABA table

Food Table

Take-down

Sound

SEE:

RICK, ROGER, or ARVIN

Stringing You Along



*Just spoke with Bill Withers.
I told him Ain't No Sunshine
is poor grammar.*

*He said "I know I know I
know I know I know I know
I know I know I know I know
I know i know i know"*

Oh! THIS is where guitar picks
come from.



**"Don't make life
as a musician
difficult. Just
relax and go
where the music
takes you. It's
that simple."**

www.musiciansunite.com

PLEASE notify us at bayareabluegrass2@aol.com if you find any errors, or have a jam that you'd like changed, added or deleted. We list by town/city then days of the week, so check your area for events and please tell us if you know of an open jam to share with other players. Also, Call ahead if possible or check websites to make sure jams are still active.

AUSTIN AREA, CTBA

- **EVERY SUNDAY, CTBA**, 3-5 PM, at Oskar Blues Brewery,
- **2nd & 4th Saturday, CTBA**, Beginner/Intermediate Jam 3-5 PM, at Wildflower Terrace, 3801 Berkman Drive, Info: Steve Mangold, fiddlersam@sbcglobal.net
- **Every Tuesday, Texas Old Time Fiddling**, 8-10 PM, at Scholz Garten, Info: 1607 San Jacinto, - (512) 474-1958
- **Every Wednesday**, Open Jam, 6-10 PM, at the VFW Post 3377, Info: 12921 Lowden Lane, Manchaca, Intermediate - all pickers welcome, Dave Stritzinger - (512) 689-4433
- **3rd Thursday**, 7:15-9:45 pm 9900 west Palmer Lane Musician's Woodshed, 78738, themusicianswoodshed.com

BELLVILLE

- **4th Saturday** (Jan. - Sep.), Spring Creek Club Jam & Show, 4 PM - Jam, 6:30 PM - Show, at Couchatte Recreation Ranch, Info: (979) 865-5250, coleebiller@aol.com

BLANCO

- **1st Saturday**, 2-5 PM, at the Dosser Residence, 3387 Cox Rd., Info: Deanna Dosser (830) 554-0006

Bluffdale

- **Every Thursday** Jam and Potluck.
Cedar Point Community Building. 2481 & 205 Bluffdale, TX 76433

BOERNE

- **2nd & 4th Saturday**, Boerne Pickers Jam, at The AgriCultural, Boerne, 1-3 PM, 102 City Park Road, Info: contact Dave Moore (210) 846-9745, dmboerne@gvtc.com

CLEBURNE

- **2nd & 4th Friday**, NTB Show and Jam, 7 PM, at Senior Citizen Center behind Cleburne Civic Center, Info: 1501 W. Henderson (Hwy 67) Bluegrass, Old Country & Gospel Senior Center.
Coffee & refreshment donations welcome.
Vestal & Roy Riddle 254-582-2948

Cypress:

- **Every Monday** 6:30-9:00 PM, Weekly Community Center, 8440 Greenhouse Rd (North @ Longenbaugh) Rooms 403 & 404 Email tonynema@earthlink.net, phone 281-373-177
- **Every 3rd & 5th Thursday**, 12:30 - 3PM, Weekly Community Center, 8440 Greenhouse Rd, Cypress. Email: tonynema@earthlink.net or phone 281-373-1777
- **2nd Friday**, Show is 6:15 to 8:30 PM and the Jam is 4:00 to 8:45 PM, Auditorium. Weekly Community Center, 8440 Greenhouse Rd, (North @ Longenbaugh) Email tonynema@earthlink.net, phone 281-373-1777 or check the website www.bluegrassrising.net

PLEASE notify us of any corrections, deletions or additions at bayareabluegrass2@aol.com so we can keep the information current and correct. Always call before traveling, just in case!

FAYETTEVILLE

- **2nd Saturday** (Jan.-Nov.), Fayetteville Picking Park, Jam, 1-? PM, on the Courthouse Square, Slow Jam - 1 PM, contact: Lou-Lou Barbour (979) 451-0067 or banjobooklady@yahoo.com

GLEN ROSE

- **3rd Saturday**, All Day, Oakdale Park, Info: Paluxy River Bluegrass Assn., free stage show, camping encouraged. Potluck & jam Friday night before.
Jim Chapman, (469) 231-6616
- **2019 Glen Rose Fall Bluegrass Jamboree**
October 3, 4 & 5, 2019. Special Consensus.Farm Hands.The Baker Family. Lots More
--Gospel Music Day, Thursday, Oct. 3, 2019.
Farm Hands. Robertson County Line. The Baker Family. and Others

Grapevine

- **2nd Saturday** Southwest Bluegrass Club Meeting, Show and Jam in Grapevine.
11:00 AM to 3:00 PM at the First Baptist Church, 301 E. Texas St., Grapevine, TX (North West side by the Gym)
Debbie Morrow: 817-798-1334. www.southwestbluegrassclub.org

GARLAND

- **Every Saturday** (Mar. - Nov.), Bluegrass on the Square, 7:30PM-1AM,
Info: at 6th between Main and State Sts.

Harwood

- **3rd Saturday**, 5-9 PM, Jam & Stage Show. Also a dinner break/ potluck at 6 pm.
9 mi east of Luling, Hwy 90. Tony Conyers 512-293-9162

HENLY

- **LAST Saturday**, Dally's Down Under: Jam, 2 PM,
Info: Between Dripping Springs & Johnson City,
contact Cliff by email or phone (701) 770-8962 for more

HONDO

- **1st Friday**, Hondo Hootenanny, 11 AM, at Hondo Community Center, 1014 E. 18th St., (830) 426-2831

HOUSTON

- **Old Time Music jam**, NW Loop area.
Contact Steve Bing, 225-405-9707 for times and Location
- **2nd Saturday**, 7:30 PM Houston Folklore Society, Admission charged and not always bluegrass, West University Community Building, 6104 Auden.
Phone 281-347-3235
- **3rd Saturday** North Harris County Dulcimer Society. see website. 2:00 PM, Advent Lutheran Church 5820 Pinemont Dr
- **Wednesdays** "Northwest Houston" by the Sam Houston Horse Race Track
Bluegrass Jam at Hickory Hollow, 6:30-8:45PM
8038 Fallbrook Drive; All skill levels welcome
- **Mondays** The Americana, 2957 Bingle Rd. 6:30-9PM; theamericanahouston.com

Irving

- **2nd & 4th Thursdays**, 7 PM, Midcities Jam, in May Hall @ Kirkwood Methodist Church, 2232 West 5th St., Contact Rick (214) 693-2787

JOHNSON CITY

- **3rd Saturday** (Jan. - Nov.), Jam, 2-6 PM, at The Dome, Info: 706 W. Main St., Hwy 290 W, Charlene Crump - (512) 632-5999
- **LAST Saturday**, Pedernales Trading Post: Jam, 2 PM,
Info: contact Cliff by email or phone (701) 770-8962 for more

Jams and Shows

Pg 3/3

PLEASE notify us of any corrections, deletions or additions at bayareabluegrass2@aol.com so we can keep the information current and correct. Always call before traveling, just in case!

LEAGUE CITY

- **3rd Saturday** (Jan. - Nov.), Bay Area Bluegrass Jam & Free Bluegrass Show, Jam - 5 PM, Show - 6:30 PM, at League City Civic Center, Info: 300 W. Walker St., (281) 636-9419

LLANO

- **4th Saturday**, Open Bluegrass Jam, 2-5 PM, at the Fuel Coffee House, Info: info@BluegrassInTheHillCountry.org

MEDINA

- **2nd Tuesday**, All Gospel Jam, 6 PM, at the First Baptist Church, Info: Linda Barton (830) 589-2486
- **2nd Friday**, Jam Session, 6-? PM, at the Masonic Lodge, Medina, Info: Maude Arnold (830) 796-8422

NORTH RICHLAND HILLS

- **1st & 3rd Thursdays**, 7 PM, Midcities Jam, 7800 Mockingbird Lane, Contact Morris (817) 994-1056

OAKDALE PARK

3rd Weekend Show and Jam

--**Friday**: Jamming.

--**Saturday**: Association meeting 2:00 to 3:00.

Free Stage Show starting at 6:30. At least 3 bands will perform.

Jamming throughout the day. Jim Chapman 469-231-6616

PEARL

- **1st Saturday**, Pearl Bluegrass Jam & Stage Show, Jam all day/night, Stage show 12:15 - 6:15 PM, food and RV hookups available. Pearl Community Center, on FM 183, 7 mi South of Purmela, info@pearlbluegrass.com; www.pearlbluegrass.com

QUITMAN

- **2nd Friday**, Bluegrass Jam 6 - 9 PM
Quitman Public Library; 202 East Goode St, Quitman
Eugene (903) 975-5745

ROUND ROCK

- **3rd Saturday**, Open Jam, 2-5 PM, at Round Rock Public Library, Info: contact Larry French (512) 632-7250

SAN ANTONIO

- **Every Monday**, "In-A-Jam" Bluegrass Jam Session, 6:30-8:30 PM, at The BBQ Station, Info: 1610 N. E. Loop 410, (210) 824-9191 HerbKnowlson or Sheryl Sultenfuss
- **Every Tuesday**, "Jam Session, 6:30-8:30 PM, Everyone welcome, Mostly Country, some Bluegrass, at The BBQ Station, Info: 1610 N. E. Loop 410, (210) 824-9191 JamesMcCalla

SHULENBERG

- **1st & 3rd Tuesday**, Jam, 6 PM, at Schulenburg RV Park Community Center, 65 N. Kessler Ave., Info: Laretta Baumgarten - (979) 743-4388, camp@schulenburgrvpark.com

SUGARLAND

- **Every Tuesday** 6:30 to 9:00 PM, 1st Presbyterian Church, 502 Eldridge Rd, Sugarland. Bluegrass and acoustic instruments only. Contact samgrice@windstream.net or 832-428-3165

TOMBALL

- **4th Saturday**, Jam, Noon-4 PM, at Kleb Woods Nature Center, 20301 Mueschke Rd., Info: (281) 373-1777 or (281) 910-4396



February 22, 2020

Potluck at 5:30 pm in the Stage Room

Call Colee at 936-697-5949 if you would like to play and we'll schedule you a time slot.

Our bands that plan to play for our 4th Saturday show are:

Pet Rooster - Southern Style

Bud Beirhaus - Milburns Mountain Grass

with a couple more pending.

Hello Bluegrass Fans!

Here we are in February already, and getting all the talent hired for our three festivals. We have included our flyers for Memorial Day, Labor Day and October Pickin'n'Grinnin festivals!

Our 4th Saturday Show and Jam will take place on **February 22nd at Coushatta RV Ranch** in the Stage room there on the property. This time we ask you to treat this like a regular pot luck supper because David will not be cooking hamburgers. We will furnish plates and utensils, tea, water, coffee, and lots of love and hugs. Bring what you think someone would enjoy as well as yourself. We will make arrangements to furnish fried chicken, but supplements will be needed.

With the sale of the park still in the process, we are not certain what kitchen equipment will be available for our use...so, that's the reason for not cooking in the kitchen at this time. Bring desserts and side dishes, and other main courses please.

Hope to see you there!

Colee and David

Texas Bluegrass Music, LLC

936-697-5949



MAY 21-24, 2020 MEMORIAL DAY WEEKEND GOSPEL MUSIC FESTIVAL

Salmon Lake Park



Grapeland, Texas



The Marksmen (GA.)



Catahoula Drive (LA.)



Jeff Robertson & Robertson County Line (TX.)



Tin Top Road (TX.)



Mike Mitchell (VA.)



Mt. View Connection (LA.)



Trinity River (FL.)



The Baker Family (MO.)



Spring Street (OK.)

Mike Mitchell will be offering an instrumental workshop on Saturday morning! Check schedule for time!

ORDER FORM

Call 936-697-5949 for
Credit Card purchases

For info contact:
coleebiller@aol.com
936-697-5949
www.TXBluegrassMusic.com

By Mail Include order form
with your check and mail to:

Texas Bluegrass Music, LLC
P.O. Box 1303
Magnolia, TX 77353

WEDNESDAY: Potluck at Pavilion at 6:00 pm

CAMPING: Over 400 Full Hook ups
\$22/night for 30 & 50 amp
Golf cart rental please call 936-687-2594 to
reserve in advance.

ADMISSION:

Thursday: \$15
Friday: \$20
Saturday: \$25
Sunday: \$15
Weekend in advance: \$60 by May 15
Weekend at the gate on Thursday: \$65

**NO HIGH BACK CHAIRS
NO SMOKING IN SEATING AREA**

Pay Pal | All Credit Cards | Checks or Cash

Name: _____
Address: _____
Phone: _____
Credit Card: _____
I am paying for _____ tickets @ \$60 each (advance price)

Children 15 & under Free with parents

The Floyd Salmon Memorial Day Weekend Gospel Music Festival

EARLY BIRD REDUCED RATE 4-DAY PASS \$60 - by May 15, 2020



Texas Bluegrass Music
at Salmon Lake Park



Sept. 3-4-5-6, 2020

44th Labor Day Bluegrass Music Festival

Salmon Lake Park  Grapeland, Texas



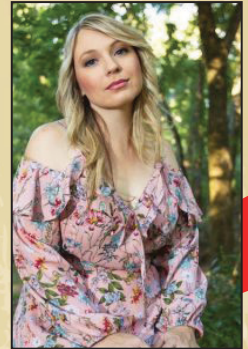
Jeff Robertson & Friends (TX.)



Lori King and Junction 63 (IA.)



Robert Mabe Band (West VA.)



Kristi Cox (Australia & TN.)



David Davis and the Warrior River Boys (AL.)



The Larry Stephenson Band (TN.)



The Marksmen (GA.)



Kenny Stinson & Perfect Tym'n (KY.)



Breaking Grass (MS.)



The Malpass Brothers (KY.)



ORDER FORM

Call 936-697-5949 for
Credit Card purchases

For info contact:
coleebiller@aol.com
936-697-5949
www.TXBluegrassMusic.com

By Mail Include order form
with your check and mail to:

Texas Bluegrass Music, LLC
P.O. Box 1303
Magnolia, TX 77353

WEDNESDAY: Potluck at Pavillion at 6:00 pm

CAMPING: Over 400 Full Hook ups
\$22/night for 30 & 50 amp
Golf cart rental please call 936-687-2594 to
reserve in advance.

ADMISSION:

Thursday: \$15
Friday: \$25
Saturday: \$25
Sunday: \$15
Weekend in advance: \$65 by August 15
Weekend at the gate on Thursday: \$70

The 44th Labor Day Bluegrass Music Festival
EARLY BIRD REDUCED RATE 4-DAY PASS \$65 - by August 15, 2020

**NO HIGH BACK CHAIRS
NO SMOKING IN SEATING AREA**

Pay Pal | All Credit Cards | Checks or Cash

Name: _____
Address: _____
Phone: _____
Credit Card: _____
I am paying for _____ tickets @ \$60 each (advance price)

Children 15 & under Free with parents



Texas Bluegrass Music
at Salmon Lake Park



Pickin' AND Grinnin' MUSIC FESTIVAL

OCT. 29, 30, 31, 2020

Coushatta RV Ranch

2812 Nelius Rd., Bellville TX 77418 ★ 40 Miles West of Houston TX



Chords of Grace (TX.)



Pet Rooster



Pine Island Station



Little Roy and Lizzie (GA.)



Nick Chandler and Delivered



The Family Sowell (TN.)



Southern Style



Kody Norris (NC.)



Wayne Brewer and Kentucky Brewgrass (KY.)



The Baker Family (MO.)



The Chuck Wagon Gang (TN.)



Coushatta RV Ranch Pickin' & Grinnin' Music Festival
EARLY BIRD REDUCED RATE 3-DAY PASS \$55 - by October 15, 2020



Texas Bluegrass Music
at Salmon Lake Park



ORDER FORM

Call 936-697-5949 for
Credit Card purchases

For info contact:
coleebiller@aol.com
936-697-5949
www.TXBluegrassMusic.com

By Mail include order form
with your check and mail to:

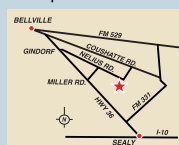
Texas Bluegrass Music, LLC
P.O. Box 1303
Magnolia, TX 77353

WEDNESDAY: Potluck at Pavillion in Stage
Room at 6:00 pm

CAMPING: Over 200 Full Hook ups
\$22/night for 20 & 30 amp

ADMISSION:

Thursday: \$15
Friday: \$25
Saturday: \$25
Weekend by Oct. 15 for 3 Big Days: \$55
Weekend at the gate on Thursday: \$60



NO HIGH BACK CHAIRS
NO SMOKING IN SEATING AREA

Pay Pal | All Credit Cards | Checks or Cash

Name: _____
Address: _____
Phone: _____
Credit Card: _____
I am paying for _____ tickets @ \$60 each (advance price)

Children 15 & under Free with parents



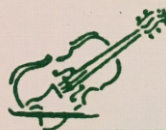
Professional Real Estate Inspectors

www.spacecityinspections.com

Ed Fryday

ASHI, TPREIA, TAREI, ICC, InterNACHI, HAR

281-636-9419



MUSIC LESSONS

Violin, Viola, Piano & Fiddle

HALLIE REEVES

(713) 477-2730



Colee and David Littlefield

Festival Management/Promoters
Salmon Lake Park

26717 Bayou Tesch Dr.
Magnolia, TX 77354

Salmon Lake Park Couthatte Recreation Ranch
www.txbluegrassmusic.com
coleebiller@aol.com c. 281-259-5453



HALLIE REEVES

strolling "gypsy" violinist

Balloon Deliveries

Phone-A-Fiddle-Grams

Dinners, Weddings, Receptions, Etc.

Classical Pops Music

713-477-2730

About BABA

The Bay Area Bluegrass Association (BABA) was organized in 1986 and incorporated in 1987 under the Texas Non-Profit Corporation Act. The primary purpose of BABA is to preserve, encourage, and promote Bluegrass and Bluegrass gospel music as an American art form. BABA promotes Bluegrass through being active in community events, fund raisers, festivals, and monthly shows. BABA is a 501(c)(3) tax deductible organization; see any Director for information.

The monthly show is free to the public and features Bluegrass from the local and national scene. The stage show begins at 6:00 PM, but pickers are welcome to bring their instruments and come earlier to jam. Tasty, inexpensive food is available at the show, and there are raffles, door prizes, and Bluegrass merchandise for sale. This is a 'no alcohol' event, but there's plenty of music and great family fun!

Proceeds from donations, sponsors, memberships, sales, and raffles are used to keep the doors open and the regular shows free to the public. They also maintain and replace sound equipment, storage, security, and expense of keeping the music playing. We thank you for your attendance, your generosity, and your love of the music.



<http://ibma.org/membership>

Support your local bluegrass music association. Memberships for adults start at \$40 dollars and the professional single membership is \$75.

SUPPORT BLUEGRASS MUSIC

<http://www.bayareabluegrass.org/membership.html>

<https://ibma.org/membership>

<http://www.spbgma.com/membership.html>



SWAP 'N' SHOP !

Epiphone made banjos in the 1920's; **Gibson bought Epiphone and commissioned these banjos in the 80-90's.**

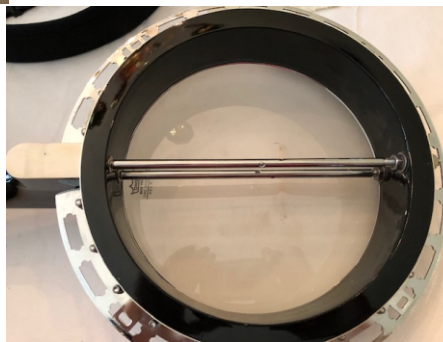
It's a merging of the Epi & Gibson design but made offshore.



Note the thick rim and heavy



Remo head is calibrated to 90 using drum dial and it really pops.



\$25 strap from Banjo Ben **included.**



Nice, plush original case in great shape.

Specification: Professional grade/ Body and neck-Mahogany/ Scale 26.25" / Nut width-1.25" / Rosewood fingerboard / Single flange /Nickel hardware / Machine heads are premium nickel with white buttons/ I believe the tone ring is a 20 hole / Stain-Red

If you are looking for a step up from your first banjo or need a top sounding backup to your best banjo, look no further.

I have bought and sold banjos on Banjo Hangout several times and encourage you to check my profile and rating. I put return conditions for this sale to ease your mind but I am confident you will keep it.



Installed a Shubb 5-string capo \$50 value. **Very little fret wear.**

Check out Youtube video link for sound byte: <https://youtu.be/fINDo1EgWoI>

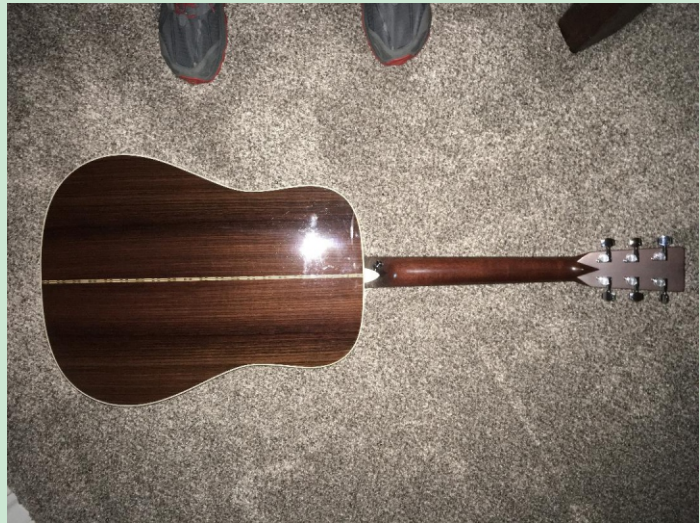
Greg English
830-387-9156

Only \$749!!

SWAP 'N' SHOP !



\$1900!!



2004 Martin D28
Adirondack top and scalloped braces

call or text Tom
281-740-0770

A Band is a unique
entity, where musicians
start out as strangers,
but end up as
www.musiciansunite.com
family.

PRESIDENT

Rick Kirkland

Vice-President

Arvin Holland

Treasurer

Roger Eklund

Secretary

Directors

Phil Deans

Travis Posey

Arvin Holland

Lynn Holbrook

Don Meade

Greg English

WebMaster

Travis Posey

tposey123@yahoo.com

Editor

bayareabluegrass2@aol.com

BABA Info

281-488-2244



Southern Style, July 2019 BABA Show

BLUEGRASS RADIO WAVES & INTERNET SITES

KNES - FM 99.1 SUN 2-5 PM Fairfield, Carl Conkling

KEOS - FM 89.1 TUES 7-9 PM College Station, John Roths

KPFT - FM 90.1 SUN 4-6 PM Houston, Chris Hirsch

KVLU - FM 91.3 SAT 7-9 PM Beaumont

KOOP - FM 91.7 SUN 10 AM-NOON Austin, Sharon Sandormirsky/
Ted Branson/ Rod Moog

KKUS - FM104.1 9-10 AM Tyler, Dave Rousseau

KSHN - FM 99.9 SAT 8:30-10:30 PM Liberty, Roy Bennett

KSYM - FM 90.1 SUN NOON-2 PM San Antonio, Hank Harrison

KJIC - FM 90.5 SAT & SUN 6 AM-6 PM Houston, Believers Bluegrass

KAMU - FM 90.9 SAT 7-8 PM College Station, Dave Higgs (Nashville)

www.bayareabluegrass.org <http://www.pick-n-bow.com>

www.bluegrassdog.com

www.bluegrassheritageradio.com

www.bluegrassmusicjams.com/jam-texas.html

www.centraltexasbluegrass.org

www.cybergrass.com

<http://www.ibma.org>

www.southwestbluegrassclub.org

www.spbgma.com

www.TXBluegrassMusic.com

www.westtexasbluegrasstraditionalmusicassociation.com



The BABA Bulletin would like feedback and Bluegrass articles from our readers. Tidbits or articles can be: an amusing quote; reviews of festivals or music conventions; behind-the-scenes reports of bands; technical; RV and campground reviews; anything that you feel would be of interest to Bluegrass enthusiasts. Articles can span more than one issue, and full credit will be given. Original, uncopyrighted work only, please and thank you!

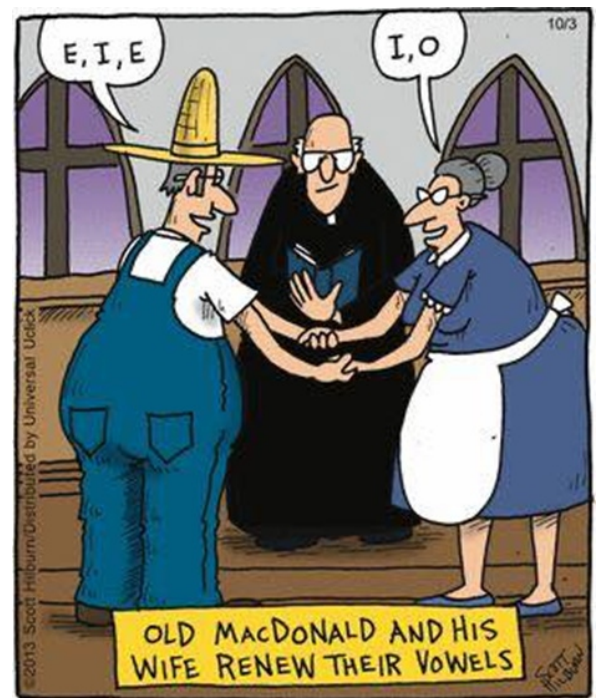
Thinkin' and Grinnin'

I yelled "COW!" at a woman on a bike and she gave me the finger. Then she plowed her bike straight into the cow.

I tried.

LOSING YOUR TEETH IN...

3.. 2.. 1..



PHOTOS

Due to the lack of a photographer, the pictures may be from previous shows and jams.

Thanks to several folks for the photos from the November show.
No WAY I can put all of the great pics on one page!
See if **your** mug is captured on the website!

SEE THEM ALL AT:

<https://baba123.smugmug.com/Music/>



Gorgeous guitar



OMG there's a kid!



WHODUNIT AT THE LAST SHOW?

Could we put on ANY shows without our volunteers? **NO!** Tell them thank you when you pass by one of 'em.

BANDS

Old Dirt Road
Southern Style

EMCEE

Arvin Holland

SET UP & TAKE DOWN

Roger Eklund,
Doug Lindsay,
Arvin Holland,

SOUND

Roger Eklund

FOOD

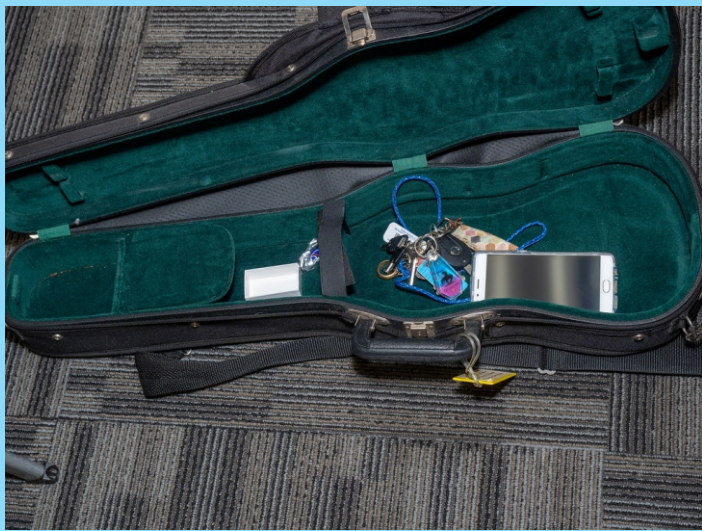
Sheryl Holland,
Elaine Bergeron

TABLE & MEMBERSHIP

This could be you!

HELP WANTED

No experience necessary



Are you and your bluegrass or bluegrass gospel band interested in playing at one of our regular monthly shows in League City?

We're always happy to have our regular great bands for repeat performances, or new groups to spice things up a bit!

Contact Lynn Holbrook at 832-584-5575
or email him at rllynnholbrook@gmail.com

SLOW JAM

Doug Lindsey

PHOTOS

Not Available~
PLEASE take pictures

BE SURE TO THANK THEM!

GOT KIDS?

GRANDKIDS?

Electrified pals?

Come by the
shop and see
our **fine**
electric
instruments
and amps, too.

Starter kits to
professional
grade. Check us out!



116 North Loop (610 @ Yale)
Houston, TX 77008
713-880-2188 www.fullersguitar.com

FOR ALL YOUR BLUEGRASS NEEDS

Acoustic Guitars
Vintage Kay Basses
Mandolins
Banjos
Dobros
Accessories



J. W. Gallagher & Son
Hand Crafted Guitars

SANTA CRUZ
GUITARS



YOUR ONE STOP SHOP FOR SIGNS & GRAPHICS

- ~ DEDICATED TO QUALITY & SERVICE
- ~ COST EFFECTIVE
- ~ EXPERIENCED
- ~ ABOVE & BEYOND

Some Of Our Products & Services

Full Color Banners • Yard Signs • Decals • Magnetics
Aluminum Signs • Real Estate Signs • Posters • Brochures
Window Perf • Vehicle Lettering & Wraps
Business Cards • Flyers • Stationery • Forms • Postcards
Street Signs • Lit Signs • Neon Signs • Dimensional Lettering
Digital Readers • Channel Letters • Pylon Signs
Full Color Apparel Printing • Embroidery • Engraving
Promotional Products ...

Need help with innovative Ideas?

Give us a call!

2212 Palmer Hwy, Texas City, Texas

409-945-7446

sales@tntsigns.net

www.tntsigns.net

Anton "Tony" Ullrich

is celebrating 47 years (1972 - 2019) of teaching folks in the greater Houston area to play Bluegrass style banjo.

Your private banjo lessons begin with an introduction to BanjerTab's unique approach to creating syncopation (that 'ahead of the beat' bounce) that you hear in the recordings of the first generation greats, who had no other form of learning than creating their banjo style 'as they went.'

Once you're familiar with BanjerTab, choose the area of playing you want to focus on: Scruggs style, full-chord back-up, mid-neck / high-neck picking, melodic style (fiddle tunes /back-up), or specific songs you have always wanted to play.

The expertise gained through 56 years of playing and 47 years of teaching is available to you now. Choose videotape lessons or come for private lessons in Houston.

Call 713-785-6655 or fax 713-532-6655

Authorized Deering Banjo Dealer
Home of the Texas Banjo

anton@banjerproductions.com
www.5stringbanjer.com



World Music

**3750 Cartwright Rd.
281-403-1615**

-  **We teach ALL INSTRUMENTS, including voice**
-  **DVD Video & CD Audio Recording**
-  **Instrument Sales**
-  **Repair & Rental**



**GIFT
certificates
available**

Advertise to 300+ people every issue!

ADVERTISING RATES

Business Cards	Half Page
\$50 per year	\$150 per year
\$5 per issue	\$15 per issue
Quarter Page	Full Page
\$75 per year	\$300 per year
\$10 per issue	\$30 per issue

email for information:

bayareabluegrass2@aol.com



409-945-7446 or sales@tntsigns.net
2212 Palmer Hwy, Texas City, TX 77590

Texas Air Services, Inc

281-337-7763

www.texasairservices.com



"A trusted partner in Aviation & Engineering Innovations"

SPACE CITY INSPECTIONS, LLC

Professional Real Estate Inspectors

www.spacecityinspections.com

Ed Fryday

ASHI, TPREIA, TAREI, ICC, InterNACHI, HAR

281-636-9419

FULLER'S VINTAGE GUITAR

Playing Music From America's Roots

Brazos River Pickers

www.brazosriverpickers.com

Toe-Tapping Bluegrass and Good Old-Time Music
Guaranteed to liven up any event!

Rex Mann

Mandolin/Vocals

For Bookings - Bob Young (713)249-8115

ROGER L. EKLUND

Residential Construction/Remodeling

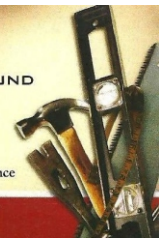
ROGER EKLUND

Owner

Estimates Available
Design & Construction
League City, Texas 77573
refixit@yahoo.com

40+ Years Experience

Mobile (281)543-2658



Sabine River Band Available for your events



409-781-1201

sabineriverband.com/



Bluegrass Music Rising in NW Houston



Bluegrass Music Knight Out Show and Jam

2nd Friday Each Mo.;

and Monday Night Jam: 6:-9:pm

* Location (for both): Weekley Community Center,
8440 Greenhouse Rd., Cypress, TX 77433

4th Saturday Jam @ Kleb Woods Nature Ctr, Tomball, TX

Contact: Tony 281-373-1777, 281-910-4396;

Website: www.bluegrassrising.net

Email: tonynema@earthlink.net; and Booking
of "Almost Heaven Bluegrass Band"

Lonestar Bluegrass Band



Contact Chris Hirsch 281-491-1680

chirsch@windstream.net

www.lonestarbluegrassband.com

The Pet Rooster Band

Bluegrass with a few Variations

Available For Your Next Event

- Bluegrass festivals
- Private parties
- Family restaurants
- Church functions
- Monthly bluegrass shows

LIKE US ON FB

Jay • R Lynn • Cathy • Doctor Phil

www.petroosterband.com • phone (979) 297.2709

Mary E. Conn & Associates

MARY E. CONN
& ASSOCIATES

The College
of Law and Business

MARY ELIZABETH CONN
(713) 357-4190
Licensed in Texas and California

mec@maryconnlaw.com
640 Limestone Street, Suite 200
Houston, Texas 77002
www.maryconnlaw.com

The City of League City



Rates & Reservations

sndpiper325@aol.com

Sand Piper RV Park

Seawall Blvd & Ferry Road

Galveston Island, Texas 77550

409-765-9431 or 409-765-9409

<http://sandpiperrvresort.com/>

LOTS OF ROOM FOR MORE SPONSORS, FOLKS!

This goes out to over 360 musicians, music fans, and bluegrass music associations every month.

As a sponsor, your ad also runs on the screen at the monthly shows in front of another 300 people. If the economy is great and you don't need to advertise, you can always support the arts AND claim a tax deduction - we're a 501(c)3 organization. **Help us, help you!**

Contact Rick Kirkland, crk5820@msn.com or call him at 281-488-2244 for more information.



**Without local music,
there is NO music.**

www.musiciansunite.com

**Local bands and
musicians MATTER.**

SUPPORT THEM.

A Little Tech Tip

Here's how to print just the pages you want;

There are two ways to bring up the print setup

1. At the top of the page, there's this: **OR** 2. Press Ctrl+P on your keyboard



Press this button

On the Print Setup, next to "Pages", change from 'All' to 'Custom'

Print

Total: 14 sheets of paper

Print

Cancel

Destination



HP Officejet Pro 8!

Pages

All

Print

Total: 14 sheets of paper

Print

Cancel

Destination



HP Officejet Pro 8!

Pages

All

All

Custom

Now you can pick the page(s) you want:

Custom

15

Want consecutive pages?

Not a problem!

Just put a hyphen

Custom

15-16

Want NON- consecutive pages?

ALSO not a problem!

Just put a comma **separating the page numbers:**

Custom

15-16, 27