



### This Month's Message

**We are back! It seems that this Covid stuff isn't quite finished with us yet.**

**We are happy to welcome you to BABA 2022. We're working on making this the best year yet.**

**This month we'll have Lonestar Bluegrass Band and Sabine River Bend Band, which are two of our most requested bands for the BABA shows.**

**Lonestar is kicking off their 40th year and saying goodbye to Chuck Gunn who is leaving them at the end of the month.**



We will miss you Chuck!

**We also have a special guest leading the slow jam In Feb. Stepping away from his lesson room at Danny D's Guitar Hacienda, Ken Valentino will be sharing his vast musical knowledge and teaching skills. Bring your instrument & learn from one of the best in our area.**



**We're working on some exciting things for the New Year, that include some new bands and some special appearances. Could a festival be in the works for the fall? I can't say for now, but it's come up in our conversations about the coming year.**

**Bring a friend to the show! It's free & they will enjoy it. Say hello to the staff! A kind word goes a long way to a volunteer who is working to bring a great show to you. Remember that it is your support, membership, & donations that make BABA possible. Without you we couldn't be here.**

**Finally, a big thanks to the City Of Webster for our new stage. I hope we can put it to good use for many years.**

**Keep on picking!**

**Rick**



For the beginners who want to experience playing with others and folks who just want a laid back, easy to follow jam, (everything will be in the key of G) stop by and play a few tunes with Ken. Beginners Jam starts at 4 and ends at 6.

The BABA Bulletin would like feedback and Bluegrass articles from our readers. Tidbits or articles can be:  
an amusing quote; reviews of festivals or music conventions; behind-the-scenes reports of bands; technical; RV and campground reviews; anything that you feel would be of interest to Bluegrass enthusiasts. Articles can span more than one issue, and full credit will be given. Original, uncopyrighted work only, please and thank you!

**Ladies, Gentleman and Children of all ages the Bay Area Bluegrass Association is proud to announce a very special show for Saturday February 19, 2022.**

**Two fantastic bands will be appearing.**

**The Sabine River Bend Band will open the show at 6:30 and Lonestar Bluegrass Band, Chris Hirsch, Charles Gunn and George Hansen**

**will be headlining at 7:30.**

**Doors open at 3:30 for folks who want to get there early and open pick or attend the beginner's pick.**

**The event is free to the public, family friendly, alcohol free and will have lots drinks and snacks available for sale.**

**We hope to see you there.**



**COME JOIN US EVERY 3RD SATURDAY  
@ 3:30 PM FOR JAMMERS, AND THE LIVE SHOW @ 6:30-8:30PM  
WHERE: WEBSTER CIVIC CENTER  
AT: 311 PENNSYLVANIA AVE, WEBSTER, TX 77598  
See you there!**

**FROM SCARSDALE:**

**Merge onto I-45 S**

**Take EXIT 25 toward NASA Pkwy/FM-528**

**Merge onto Gulf Fwy**

**Turn left onto W Nasa Road 1/TX-1**

**Turn right onto S Walnut St**

**Turn left onto Pennsylvania St**

**311 PENNSYLVANIA ST is on the right**

**FROM FM 517:**

**Merge onto I-45 N**

**Take EXIT 25 toward FM-528/NASA/NASA Pkwy**

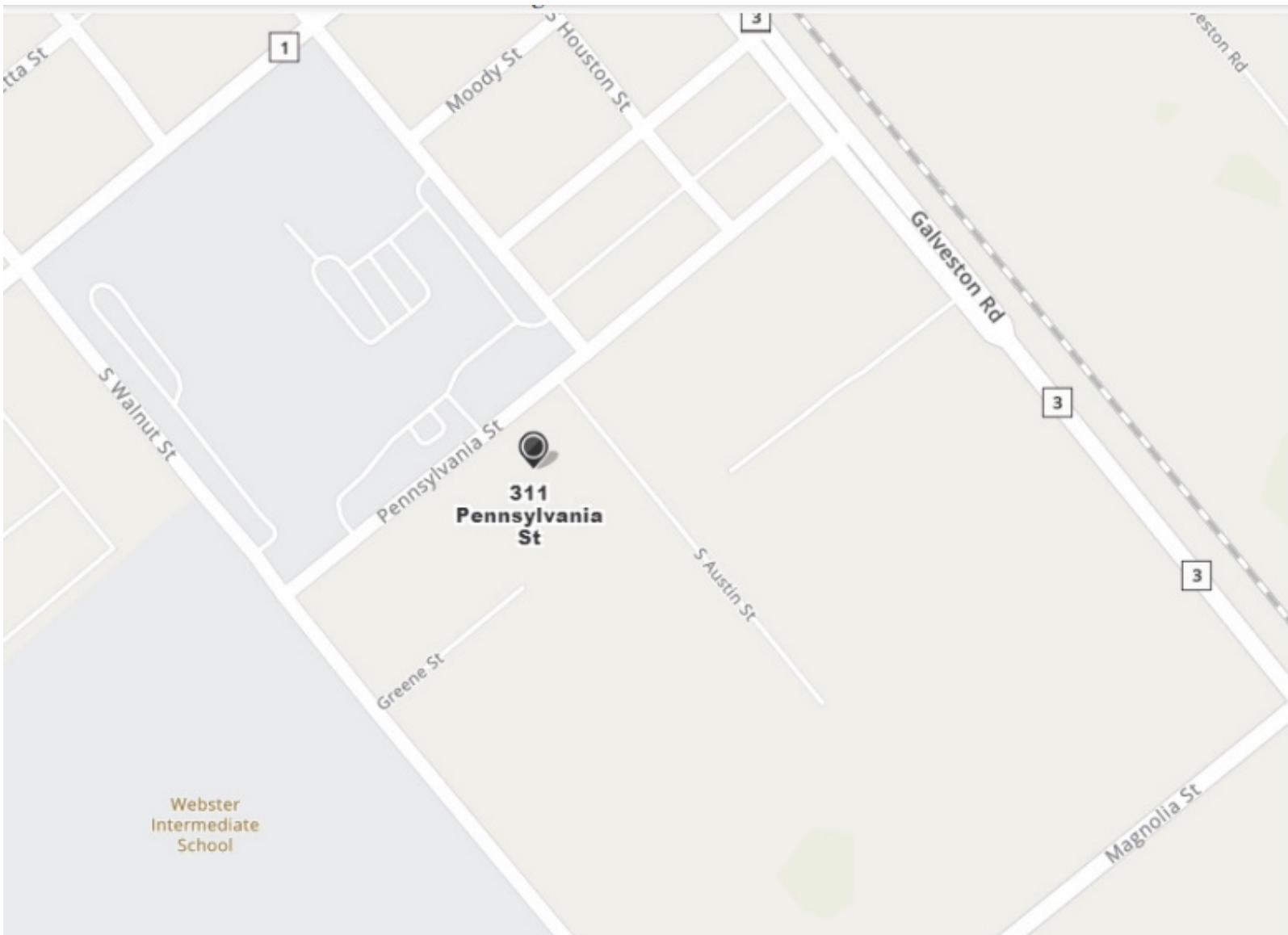
**Merge onto Gulf Fwy**

**Turn right onto Magnolia St**

**Turn left onto Walnut St**

**Turn right onto Pennsylvania St**

**311 PENNSYLVANIA ST is on the right**





last BABA  
Bands





# WHO DUNNIT AT THE LAST SHOW

Greg English &  
Betsy Lee,  
Pet Rooster

Roger Eklund  
John Doyle  
Lynn Holbrook

Sheryl & Arvin Holland  
Elaine Bergernon

John Doyle

BRANDS  
FOOD  
SHOW  
FOOD  
SHOW

Rick Kirkland,  
Lynn Holbrook

Roger Eklund  
John Doyle  
Doug Lindsay

Rick Kirkland  
Pauline Eklund  
Betty Moore  
Pauline Eklund,  
NEED  
PHOTOGRAPHER

EMCEE  
SOUND  
TABLE  
PHOTOGRAPHER

BE SURE TO  
THANK THEM!

Thank  
you!

Third-hand information;  
I apologize if any of it is wrong!

-Amy Eklund

When you turn on a Country station

@realcountrymusicforall

and hear some doofus trying to rap.



With the rise of self driving vehicles, it's only a matter of time before there's a Country song where the guy's truck leaves him.



IF YOU LICK ALL THE FROSTING  
OFF A DONUT, IT BECOMES  
A HEALTHY BAGEL.

YOU'RE WELCOME

When you pull up to a red light



and the car beside you has  
Bluegrass on the radio



A DAY WITHOUT BLUEGRASS IS LIKE,



UHM, I WOULDN'T KNOW!

THERE'S TENS OF DOLLARS TO BE  
MADE



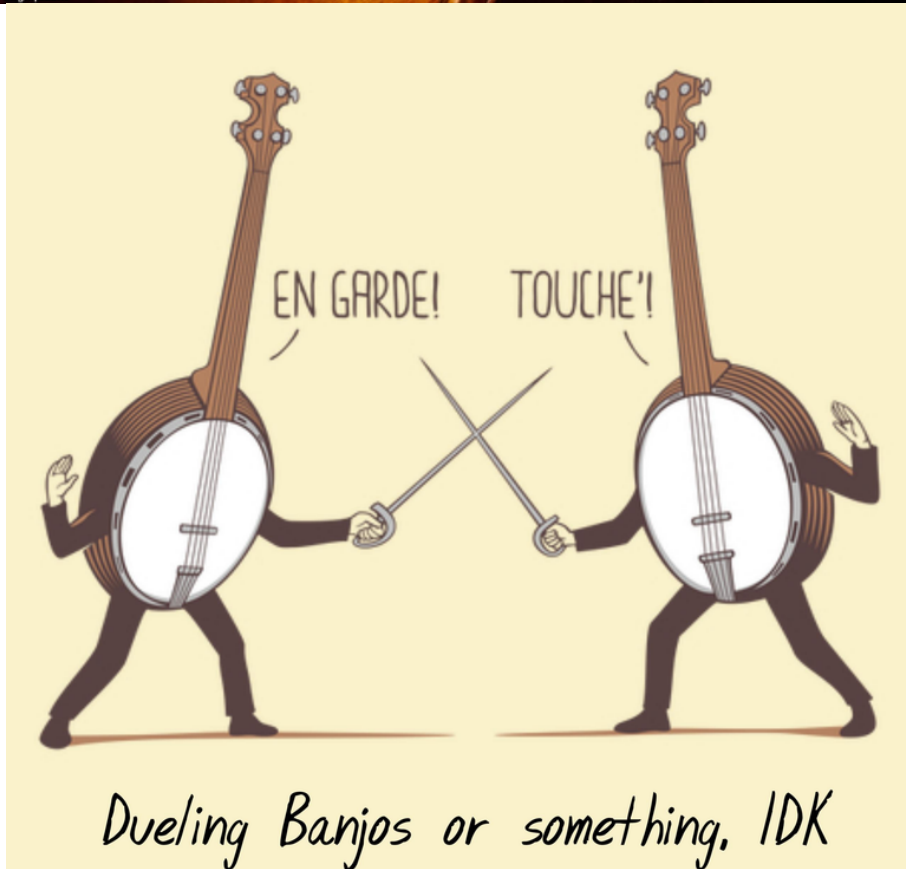
PLAYING THE BLUEGRASS  
MUSIC

NOT SURE IF  
FIDDLE



OR CAT TORTURING CEREMONY





## **"The Jam"**

**I've been playing music most of my life.**

**I have also been the Vice President or President of Bay Area Bluegrass over 20 years, so I've been around a few jams.**

**I've hosted weekly & monthly jams, and been invited to private jams for many years.**

**Over those years I've learned a few do's & don'ts that I'd like to share to help make "The Jam" fun for everyone.**

**There are several kind of jams. Learn the difference, Have fun, that's what it's all about because you're not there for the money.**

**Open Jam, anyone can join in, sometimes they can get rather large. When this happens it may be a good idea to split off and start another. (more on this later)**

**Private jam, is by invitation only. This can be a small group that want to play by themselves. They often get off somewhere in a remote area. Ask to join in or wait to be asked. Don't just walk up and start playing. You may not be welcomed warmly. Sometimes these guys drive a long way to play with friends. You should respect that and enjoy the music they're making. You just may hear some great music in these jams.**

### **Jam Etiquette:**

**Have fun, that's what you're here for.**

**1. Tune your instrument. Purchase a tuner, learn to use it.**

**2. Know your basic chords & changes. Jams are great places to learn but, you should be able to make and change chords.**

**3. Be ready when it's your turn to lead a song. No one came to watch you flip through your song book.**

**4. Know the song you pick. You can't lead the song if you don't know the song. Everybody forgets words but don't stop the song when you forget.**

**5. Tune your instrument see #1**

**6. Be ready to take your break when it's your turn. If you miss that 1st note don't try to make it up. It's gone forget it, You'll never get it back.**

**7. If you can't hear the person taking a break you're too loud.**

**8. Don't play over a person's break.**

**9. Don't take over a person's song, singing or playing. It's their turn because they picked it, so let them enjoy it.(even if you think you could sing or play it better)**

**10. Tune your instrument. See #5**

**11 When playing in a small group it's fine for everyone to take a break. When in a large group pick out a few people to take a break. If you have a killer break you want to play make eye contact with the leader to let them know you want a break. If everyone in a large group takes a break it makes for some long, long, songs and takes a lot of time. (Think of I'll Fly Away with 15+ breaks) You won't get to do many songs.**

**12 Unless it's an easy song an open jam isn't the place for original music that you have to teach the group.**

**13. Jam Buster: a song nobody knows or can't play. A person that sings or plays "crazy or out of hand" or someone being a "grasshole"**

**14. Tune your instrument. See #10**

**15. If you're out of timing. STOP! Pick it up as it comes around. Practice with a metronome. You can download one free on your phone.**

**16. I shouldn't have to say this but "Take a bath" that ½ gallon of Dollar Store perfume/Cologne doesn't work. We've all been next to someone like this.**

**17. A Jam isn't the place for a lesson. Find a place you won't interrupt the Jam & they won't interrupt**



**Try to do these or you'll find yourself playing alone.**

**I know there's many things I missed but I can't keep on one subject too long without being drawn to flashy things & butterflies "Oh look a Humming bird"**

**Play with as many different people as you can as often as you can. You'll learn.  
Happy jamming,  
Rick**



# BABA pics from the November Show









### **Individual Membership: \$35.00 annually**

You'll become a member of the BABA family and support the free monthly shows & jams. You'll receive the BABA Bulletin Newsletter monthly, admission to workshops at the monthly shows, admission to Bluegrass in the Park for BABA members & guest, updates about Bluegrass events in the area, discounts on some bluegrass shows in the area – as well as the satisfaction of supporting BABA and Bluegrass Music in Texas.

### **Family Membership: \$50.00 annually**

You'll become a member of the BABA family with all the benefits of the individual membership for you and your immediate family. You'll support the free monthly shows & jams, receive the BABA Bulletin Newsletter monthly, get admission to workshops at the monthly shows and admission to Bluegrass in the Park for BABA members & guest, get updates about Bluegrass events in the area, discounts on some bluegrass shows in the area - and the satisfaction of supporting BABA and Bluegrass Music in Texas.

### **Gold Club Membership Individual: \$100.00 annually**

Get all the benefits of the individual membership, a Gold Club Membership Name Badge, & a BABA shirt for giving that extra support to the BABA family. You'll become a member of the BABA family and support the free monthly shows & jams, receive the BABA Bulletin Newsletter monthly, get admission to workshops at the monthly shows, admission to Bluegrass in the Park for BABA members & guest, updates about Bluegrass events in the area, discounts on some bluegrass shows in the area - and the satisfaction of supporting BABA a little extra.

### **Lifetime Member Individual: \$350.00**

Get all the benefits of BABA membership for life! You'll become a member of the BABA family and support the free monthly shows & jams, and receive the BABA Bulletin Newsletter monthly. You'll get admission to workshops at the monthly shows, admission to Bluegrass in the Park for BABA members & guest, updates about Bluegrass events in the area, discounts on some bluegrass shows in the area - and the satisfaction of supporting BABA for life.

### **Lifetime Member Family: \$500.00**

Get all the benefits of BABA membership for life for you and your immediate family! You'll become a member of the BABA family and support the free monthly shows & jams, and receive the BABA Bulletin Newsletter monthly. You'll get admission to workshops at the monthly shows, admission to Bluegrass in the Park for BABA members & guest, updates about Bluegrass events in the area, discounts on some bluegrass shows in the area - and the satisfaction of supporting BABA for life.

### **Lifetime Gold Club Membership Individual: \$1000.00**

Get all the benefits of the individual membership, A Gold Club Membership Name Badge, A BABA shirt, and knowing that you are giving that extra support to the BABA family. You'll become a member of the BABA family and support the free monthly shows & jams. You'll receive the BABA Bulletin Newsletter monthly, admission to workshops at the monthly shows, admission to Bluegrass in the park for BABA members & guest, updates about Bluegrass events in the area, discounts on some bluegrass shows in the area -and the satisfaction of supporting BABA 'above and beyond'.



# **A BIG BLUEGRASS THANKS!**

**to our members who help keep the music playing every month, and an extra shout out to those who have joined as Gold Club, Lifetime, Endowment and Foundation levels.**

**We couldn't do this without all of you!**

## **Foundation Members:**

**Ed Fryday, Mike Fuller, Chris Bagley**

## **Endowment Gift Members:**

**Phil & Fern Deans, Pat Lomas, Lisa Maranto**

**Members' names are in alphabetical order**

## **Gold Club Members**

**Doug Averitt, Mike & Pat Conwell, Dr. John Doyle, Mack Himel, Rick Kirkland family, Robert Manning, Neil Maxson, Ronald Moore, Marlene Payne,**

**Laney & Shannon Sims**

***Membership in the Gold Club is payable annually. We thank you for your "extra" support.***

## **BABA Lifetime Members**

**Brad & Dee Alford, Dave Aldrich, Scott & Diana Armstrong, Doris Arnett, Chris Bagley, Hubert & Shirley Brasseaux, Cara Cooke, Eric & Kim Corgey, Lyman & Annis Cox,**

**Paul & Dana Cutts, Robert & Debi Duke, Bill & Joni Dusenbury,**

**Roger & Pauline Eklund, Harry Edwards, John Ellisor, Ruth Evans, George Franklin,**

**Jason & Alicia Fricke, Ed & Becky Fryday, Paul & Lillie Futch, John & Jean Gardner,**

**Bill & Geri Gatlin, J.B. & Nancy Graham, Jim & Sharon Greenlee, Doris Grigg,**

**Chuck & Mary Pat Gunn, Robert & Elizabeth Hasserd, Tom Harrison,**

**Ron & Anne Hayden, Lynn Holbrook, Arvin & Sheryl Holland,**

**Sammy & Ottie Holloway, Jan Johnston, Stan Jones, Paul & Linda Kerr,**

**David & Colee Littlefield, Ken & Wanda MacDonnell, Phil & Cecile Mathers,**

**Paul & Madeline McKneely, Faber & Sandy McMullen, Patrick Milligan,**

**Barbara Monroe, Charles & Ellen Orsburn, Mike Petitt, Bill & Glenna Pierpont,**

**Norman Ponder, Billy Potts, Jackson Ray, Tony & Nema Redding, Karl Reid,**

**Jack (R.I.P.) & Carol Ritter, Tom & Sandy Roberts, Jonathan & Kristine Samuell,**

**Billy & Terry Schmidt, Jerry & Monica Scribner, Gordon Spaulding,**

**O.K. & Sharon Stafford, Bob & Marilyn Taylor, James & Laura Taylor, Scott Teven,**

**Charlene Threlkeld, David Towery, Helen Vinson, Viola Wakefield, Larry Wenner,**

**Paul Williams.**



**Now that the BABA shows are up and running, we  
sure need you to volunteer!  
Just grab Rick and say,  
“Hey! I want to help!  
Please tell me what to do.”**

**Membership**

**BABA table**

**Sound**

**Greeters**

**Set-up**

**Member drawing Prizes**

**Backup Photographer**

**Take-down**

**Billing (Ads &**

**Membership)**

**Pass the Bucket**

**Food Table**



**We need YOU**

**to volunteer for BABA**

### **About BABA**

The Bay Area Bluegrass Association (BABA) was organized in 1986 and incorporated in 1987 under the Texas Non-Profit Corporation Act. The primary purpose of BABA is to preserve, encourage, and promote Bluegrass and Bluegrass gospel music as an American art form. BABA promotes Bluegrass through being active in community events, fund raisers, festivals, and monthly shows. BABA is a 501(c)(3) tax deductible organization; see any Director for information. The monthly show is free to the public and features Bluegrass from the local and national scene. The stage show begins at 6:00 PM, but pickers are welcome to bring their instruments and come earlier to jam.

Tasty, inexpensive food is available at the show, and there are raffles, door prizes, and Bluegrass merchandise for sale. This is a 'no alcohol' event, but there's plenty of music and great family fun!

Proceeds from donations, sponsors, memberships, sales, and raffles are used to keep the doors open and the regular shows free to the public. They also maintain and replace sound equipment, storage, security, and expense of keeping the music playing.

We thank you for your attendance, your generosity, and your love of the music.





**Our "Once-A-Month BABA Jam" has become a "Once-A-Week BABA Jam"!  
This is the one that was held at Fuddruckers for many years. (that location is now a parking lot)**

**The owner of Luka's Barbeque and Steakhouse welcomed us to come jam on Tuesdays... EVERY WEEK!  
We will arrive at 6pm, for those who want to eat, and the actual jam starts at 7pm.  
We would love to see you there.**

**Luka's Barbeque and Steakhouse  
17052 SATURN LN, HOUSTON, TX 77058  
(281) 286-8669**



**SUPPORT BLUEGRASS MUSIC**

**<http://www.bayareabluegrass.org/membership.html>**

**<https://ibma.org/membership>**

**<http://www.spbgma.com/membership.html>**

## **SUPPORTING BANDS of the BAY AREA BLUEGRASS ASSOCIATION**

**ALMOST HEAVEN:** Tony Redding, 281-373-1777, [tonynema@earthlink.net](mailto:tonynema@earthlink.net) ;  
[www.bluegrassrising.net/#!/about-our-band/c1mys](http://www.bluegrassrising.net/#!/about-our-band/c1mys)

**THE BLUEGRASS SOLUTION:** Mike Fuller, 281-989-8719, [mike@fullersguitar.com](mailto:mike@fullersguitar.com) ;  
[www.thebluegrasssolution.com](http://www.thebluegrasssolution.com)

**THE BRAZOS RIVER PICKERS:** Bob Young, 713-249-8115, [bob.young@spectracf.com](mailto:bob.young@spectracf.com) ;  
[www.brazosriverpickers.com](http://www.brazosriverpickers.com)

**BUFFALO NICKEL BLUEGRASS BAND:** Laney Sims, 346-901-1882, [lanesims55@gmail.com](mailto:lanesims55@gmail.com) ;  
[www.thebuffalonickebluegrassband.com](http://www.thebuffalonickebluegrassband.com)

**THE GREER FAMILY BAND (Brenham):** Lawrence Greer, 979-454-1120, [lgreer@txsun.net](mailto:lgreer@txsun.net) ;  
[www.greerfamilyband.com](http://www.greerfamilyband.com)

**THE LAUGHING LIZARDS STRING BAND:** Steve Bing, 225-405-9707, [stevebingmusic@aol.com](mailto:stevebingmusic@aol.com) ;  
[www.laughinglizardsband.com](http://www.laughinglizardsband.com)

**LONESTAR BLUEGRASS BAND:** Chris Hirsch, 281-788-3840, [cshirsch@windstream.net](mailto:cshirsch@windstream.net) ;  
[www.lonestarbluegrassband.com](http://www.lonestarbluegrassband.com)

**OLD DIRT ROAD BAND:** Dave Culbertson, 832-544-4373 ; [dculbertson@consolidated.net](mailto:dculbertson@consolidated.net)

**OUT OF THE BLUE SEABROOK:** Greg English, 830-387-9156

**PET ROOSTER:** Lynn Holbrook, 832-584-5575, [info@petroosterband.com](mailto:info@petroosterband.com) ;  
[www.petroosterband.com](http://www.petroosterband.com)

**SABINE RIVER BEND BAND:** Earl Cochran, [earlcochranjr@aol.com](mailto:earlcochranjr@aol.com) ; [www.sabineriverbend.com](http://www.sabineriverbend.com)

**SKIDAWAY RIVER:** Doug Burtchaell, 281-380-0157 [dburtchaell@comcast.net](mailto:dburtchaell@comcast.net)

**SOUTHERN STYLE:** Rick Kirkland, 281-488-2244, [crk5820@msn.com](mailto:crk5820@msn.com) ;  
[www.southernstylebluegrassband.com](http://www.southernstylebluegrassband.com)

**SOWELL FAMILY PICKERS:** Cindy Sowell, 979-251-2605 [www.thesowellfamilypickers.com](http://www.thesowellfamilypickers.com)

**STRINGS OVER TEXAS:** Lynn Holbrook, 832-584-5575

**WHITE DOVE:** Glen Beauboeuf, 832-289-7895 [glen\\_angieb@yahoo.com](mailto:glen_angieb@yahoo.com) ; Facebook - White Dove

Interested in adding your band to this list?

Contact Lynn Holbrook at 832-584-5575

or email him at [rlynnholbrook@gmail.com](mailto:rlynnholbrook@gmail.com)





**To get the latest information about Kleb Woods you  
can contact them at :**

**Bluegrass Music Rising In NW Harris Co.© Jam @ Kleb Woods  
Nature Center**

**Fourth Saturday Jam at Kleb Woods Nature Center from 12 to 4pm  
Tonynema10@Gmail.com for more information**

**Good Shepherd Methodist Church can resume our Monday night  
jams. Hooray!**

**Please let us know if you have any problems or concerns with this  
arrangement.**

**Tony and Nema Redding  
Fayetteville on the 2nd Saturday of the month,  
hosted by Loulou Barber.**

**Another good picking place to go is Triple Creek RV Park in  
Woodville, TX where  
the bluegrass jam is indoors and has food and fellowship galore.  
You will feel right at home with the fun folks and musicians.**

## AUSTIN AREA, CTBA

- **EVERY SUNDAY, CTBA**, 3-5 PM, at Oskar Blues Brewery,
- **2nd & 4th Saturday, CTBA**, Beginner/Intermediate Jam 3-5 PM, at Wildflower Terrace, 3801 Berkman Drive, Info: Steve Mangold, fiddlersam@sbcglobal.net
- **Every Tuesday**, Texas Old Time Fiddling, 8-10 PM, at Scholz Garten, Info: 1607 San Jacinto, - (512) 474-1958
- **Every Wednesday**, Open Jam, 6-10 PM, at the VFW Post 3377, Info: 12921 Lowden Lane, Manchaca, Intermediate - all pickers welcome, Dave Stritzinger - (512) 689-4433
- **3rd Thursday,,** 7:15-9:45 pm 9900 west Palmer Lane Musician's Woodshed, 78738, themusicianswoodshed.com

## BELLVILLE

- **4th Saturday (Jan. - Sep.)**, Spring Creek Club Jam & Show, 4 PM - Jam, 6:30 PM - Show, at Coushatta Recreation Ranch, Info: (979) 865-5250, coleebiller@aol.com

## BLANCO

- **1st Saturday**, 2-5 PM, at the Dosser Residence, 3387 Cox Rd., Info: Deanna Dosser (830) 554-0006

## Bluffdale

- **Every Thursday** Jam and Potluck. Cedar Point Community Building. 2481 & 205 Bluffdale, TX 76433

## BOERNE

- **2nd & 4th Saturday**, Boerne Pickers Jam, at The AgriCultural, Boerne, 1-3 PM, 102 City Park Road, Info: contact Dave Moore (210) 846-9745, dmboerne@gvtc.com

## CLEBURNE

- **2nd & 4th Friday**, NTB Show and Jam, 7 PM, at Senior Citizen Center behind Cleburne Civic Center, Info: 1501 W. Henderson (Hwy 67) Bluegrass, Old Country & Gospel Senior Center. Coffee & refreshment donations welcome. Vestal & Roy Riddle 254-582-2948

## CYPRESS

- **Every Monday**, 6:30-9:00 PM, Weekly Community Center, 8440 Greenhouse Rd (North @ Longenbaugh) Rooms 403 & 404 Email [tonynema@earthlink.net](mailto:tonynema@earthlink.net), phone 281-373-177
- **Every 3rd & 5th Thursday**, 12:30 - 3PM, Weekly Community Center, 8440 Greenhouse Rd, Cypress. Email: [tonynema@earthlink.net](mailto:tonynema@earthlink.net) or phone 281-373-1777
- **2nd Friday**, Show is 6:15 to 8:30 PM and the Jam is 4:00 to 8:45 PM, Auditorium. Weekly Community Center, 8440 Greenhouse Rd,(North @ Longenbaugh) Email [tonynema@earthlink.net](mailto:tonynema@earthlink.net), phone 281-373-1777 or check the website [www.bluegrassrising.net](http://www.bluegrassrising.net)



## FAYETTEVILLE

- **2nd Saturday (Jan.-Nov.),** Fayetteville Picking Park, Jam, 1-? PM, on the Courthouse Square, Slow Jam - 1 PM, Lou-Lou Barbour (979) 451-0067 or banjobooklady@yahoo.com

## GLEN ROSE

- **3rd Saturday,** All Day, Oakdale Park, Info: Paluxy River Bluegrass Assn., free stage show, camping encouraged. Potluck & jam Friday night before. Jim Chapman, (469) 231-6616

## GRAPEVINE

- **2nd Saturday** Southwest Bluegrass Club Meeting, Show and Jam in Grapevine. 11:00 AM to 3:00 PM at the First Baptist Church, 301 E. Texas St., (North West side by the Gym) Debbie Morrow: 817-798-1334. [www.southwestbluegrassclub.org](http://www.southwestbluegrassclub.org)

## GARLAND

- **Every Saturday (Mar. - Nov.),** Bluegrass on the Square, 7:30PM-1AM, at 6th between Main and State Sts.

## HARWOOD

- **3rd Saturday,** 5-9 PM, Jam & Stage Show. Also a dinner break/ potluck at 6 pm. 9 mi east of Luling, Hwy 90. Tony Conyers 512-293-9162

## HENLY

- **LAST Saturday,** Dally's Down Under: Jam, 2 PM, Between Dripping Springs & Johnson City, contact Cliff by email or phone (701) 770-8962 for more

## HONDO

- 1st Friday, Hondo Hootenanny, 11 AM, at Hondo Community Center, 1014 E. 18th St., (830) 426-2831

## HOUSTON

- **Unknown,** Contact Steve Bing, 225-405-9707 for times and Location, Old Time Music jam, NW Loop area.
- **2nd Saturday,** 7:30 PM Houston Folklore Society, Admission charged and not always bluegrass, West University Community Building, 6104 Auden. Phone 281-347-3235
- **3rd Saturday** North Harris County Dulcimer Society. see website. 2:00 PM, Advent Luthern Church 5820 Pinemont Dr
- **Wednesdays** "Northwest Houston" by the Sam Houston Horse Race Track Bluegrass Jam at Hickory Hollow, 6:30-8:45PM, 8038 Fallbrook Drive; All skill levels welcome
- **Mondays** The Americana, 2957 Bingle Rd. 6:30-9PM; [theamericanahouston.com](http://theamericanahouston.com)

## IRVING

- **2nd & 4th Thursdays,** 7 PM, Midcities Jam, in May Hall @ Kirkwood Methodist Church, 2232 West 5th St., Contact Rick (214) 693-2787

## JOHNSON CITY

- **3rd Saturday (Jan. - Nov.),** Jam, 2-6 PM, at The Dome, Info: 706 W. Main St., Hwy 290 W, 1111 Charlene Crump - (512) 632-5999
- **LAST Saturday,** Pedernales Trading Post: Jam, 2 PM, Info: contact Cliff by email or phone (701) 770-8962 for more



## LLANO

- **4th Saturday**, Open Bluegrass Jam, 2-5 PM, at the Fuel Coffee House, [info@BluegrassInTheHillCountry.org](mailto:info@BluegrassInTheHillCountry.org)

## MEDINA

- **2nd Tuesday**, All Gospel Jam, 6 PM, at the First Baptist Church, Linda Barton (830) 589-2486
- **2nd Friday**, Jam Session, 6-? PM, at the Masonic Lodge, Medina, Maude Arnold (830) 796-8422

## NORTH RICHLAND HILLS

- **1st & 3rd Thursdays**, 7 PM, Midcities Jam, 7800 Mockingbird Lane, Contact Morris (817) 994-1056

## OAKDALE PARK

- **3rd Weekend** Show and Jam
    - Friday: Jamming.
    - Saturday: Association meeting 2:00 to 3:00.
- Free Stage Show starting at 6:30. At least 3 bands will perform. Jamming throughout the day.
- Jim Chapman 469-231-6616

## PEARL

- **1st Saturday**, Pearl Bluegrass Jam & Stage Show, Jam all day/night, Stage show 12:15 - 6:15 PM, food and RV hookups available. Pearl Community Center, on FM 183, 7 mi South of Purmela, [info@pearlbluegrass.com](mailto:info@pearlbluegrass.com); [www.pearlbluegrass.com](http://www.pearlbluegrass.com)

## QUITMAN

- **2nd Friday**, Bluegrass Jam 6 - 9 PM, Quitman Public Library; 202 East Goode St, Quitman, Eugene 903-975-5745

## ROUND ROCK

- **3rd Saturday**, Open Jam, 2-5 PM, at Round Rock Public Library, contact Larry French (512) 632-7250

## SAN ANTONIO

- **Every Monday**, "In-A-Jam" Bluegrass Jam Session, 6:30-8:30 PM, at The BBQ Station, 1610 N. E. Loop 410, (210) 824-9191 HerbKnowlson or Sheryl Sultenfuss
- **Every Tuesday**, "Jam Session, 6:30-8:30 PM, Everyone welcome, mostly country, some bluegrass, The BBQ Station, 1610 N. E. Loop 410, (210) 824-9191 JamesMcCalla

## SHULENBERG

- **1st & 3rd Tuesday**, Jam, 6 PM, at Schulenburg RV Park Community Center, 65 N. Kessler Ave., Laretta Baumgarten - (979) 743-4388, [camp@schulenburgrvpark.com](mailto:camp@schulenburgrvpark.com)

## SUGARLAND

- **Every Tuesday** 6:30 to 9:00 PM, 1st Presbyterian Church, 502 Eldridge Rd, Sugarland. Bluegrass and acoustic instruments only. Contact [samgrice@windstream.net](mailto:samgrice@windstream.net) or 832-428-3165

## TOMBALL

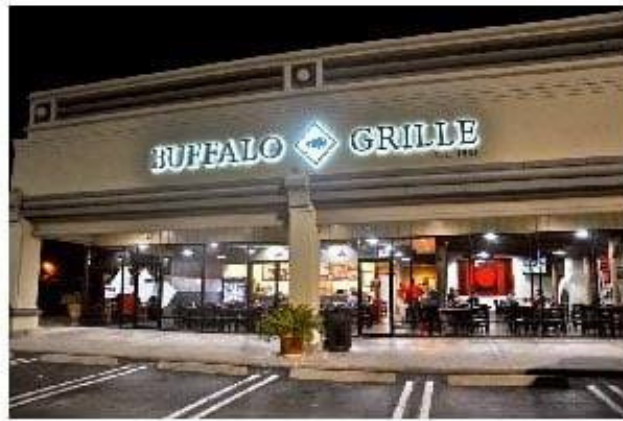
- **4th Saturday**, Jam, Noon-4 PM, Kleb Woods Nature Center, 20301 Mueschke Rd, Call: 281-373-1777 or 281-910-4396

## WEBSTER

- **3rd Saturday (Jan. - Nov.)**, Bay Area Bluegrass Jam & Free Bluegrass Show, Jam - 3:30 PM, Show - 6:30 PM, Webster Civic Center,, 311 Pennsylvania Ave., (281) 316-4108, (281) 332-1826

Be sure to call ahead to make sure they're meeting,  
especially during this pandemic





4080 Bissonnet St, Houston, TX

## **The BUFFALO GRILLE BLUEGRASS JAM**

**Every Wednesday, 6–8 pm**

**Beginners through advanced  
and all in between.**

---

*Come pick, come listen, it's all good*



GOT KIDS?  
GRANDKIDS?  
Electrified pals?

Come by the  
shop and see  
our fine  
electric  
instruments  
and amps, too.  
Starter kits to  
professional  
grade.  
Check us out!



116 North Loop  
Houston, TX 77008  
713-880-2188 [www.fullersguitar.com](http://www.fullersguitar.com)

For all your Bluegrass Needs

**Acoustic Guitars**  
**Vintage Kay Basses**  
**Mandolins**  
**Banjos**  
**Dobros**  
**Accessories**



*Eastman*  
HANDCRAFTED  
GUITARS & MANDOLINS

*Epiphone*

*Fender*

*Gibson*

*GRETSCH*

*KRAMER*

*Squier*  
by Fender

*Taylor*  
QUALITY GUITARS

*Martin & Co.*  
EST. 1833

*Rickenbacker*



*Liberty*  
CHIROPRACTIC

12325 Scarsdale Blvd, Ste A  
Houston, TX 77089

281-484-9492

[www.libertychiro.us](http://www.libertychiro.us)



Carve out some time for an adjustment.

Call 281-484-9492



<http://ibma.org/membership>

Support your local bluegrass music association. Memberships for adults start at \$40 dollars and the professional single membership is \$75.

Anton "Tony" Ullrich

is celebrating 47 years (1972 - 2019) of teaching folks in the greater Houston area to play Bluegrass style banjo.

Your private banjo lessons begin with an introduction to BanjerTab's unique approach to creating syncopation (that 'ahead of the beat' bounce) that you hear in the recordings of the first generation greats, who had no other form of learning than creating their banjo style 'as they went.'

Once you're familiar with BanjerTab, choose the area of playing you want to focus on: Scruggs style, full-chord back-up, mid-neck / high-neck picking, melodic style (fiddle tunes /back-up), or specific songs you have always wanted to play.

The expertise gained through 56 years of playing and 47 years of teaching is available to you now.

Choose videotape lessons or come for private lessons in Houston.

Call 713-785-6655 or fax 713-532-6655



**Authorized Deering Banjo  
Dealer**

**anton@banjerproductions.com  
www.5stringbanjer.com**

**Home of the Texas Banjo**  
**World Music**  
3750 Cartwright Rd.  
**281-403-1615**

- 🌐 We teach **ALL INSTRUMENTS**, including voice
- 🌐 **DVD Video & CD Audio Recording**
- 🌐 **Instrument Sales**
- 🌐 **Repair & Rental**



**GIFT certificates available**

worldmusicsugarland.com

NA FM 1092  
Cartwright  
Hwy 6

Advertise to 300+ people every issue!

## ADVERTISING RATES

Business Cards	Half Page
\$50 per year	\$150 per year
\$5 per issue	\$15 per issue

Quarter Page	Full Page
\$75 per year	\$300 per year
\$10 per issue	\$30 per issue

email for information: bayareabluegrass2@aol.com



409-945-7446 or sales@tntsigns.net  
2212 Palmer Hwy, Texas City, TX 77590



# Texas Air Services, Inc

281-337-7763

[www.texasairservices.com](http://www.texasairservices.com)



"A trusted partner in Aviation & Engineering Innovations"

## SPACE CITY INSPECTIONS, LLC

Professional Real Estate Inspectors  
[www.spacecityinspections.com](http://www.spacecityinspections.com)

Ed Fryday

ASHI, TPREIA, TAREI, ICC, InterNACHI, HAR  
281-636-9419

## Bluegrass Music Rising in NW Houston

### Bluegrass Music Knight Out Show and Jam

2nd Friday Each Mo.;

and Monday Night Jam: 6:-9:pm

\* Location (for both): Weekley Community Center,  
8440 Greenhouse Rd., Cypress, TX 77433

4th Saturday Jam @ Kleb Woods Nature Ctr, Tomball, TX

Contact: Tony 281-373-1777, 281-910-4396;

Website: [www.bluegrassrising.net](http://www.bluegrassrising.net)

Email: [tonynema@earthlink.net](mailto:tonynema@earthlink.net); and Booking  
of "Almost Heaven Bluegrass Band"

## Mary E. Conn & Associates

MARY E. CONN  
& ASSOCIATES



MARY ELIZABETH CONN

(713) 285-4195

Licensed in Texas and California

[www.maryconnrealestate.com](http://www.maryconnrealestate.com)  
4400 Lindenberg Blvd., Suite 200  
Houston, Texas 77050  
[www.maryconnrealestate.com](http://www.maryconnrealestate.com)

## FULLER'S VINTAGE GUITAR

Playing Music From America's Roots

### Brazos River Pickers

[www.brazosriverpickers.com](http://www.brazosriverpickers.com)

Toe-Tapping Bluegrass and Good Old-Time Music  
Guaranteed to liven up any event!

Rex Mann

Mandolin/Vocals

For Bookings - Bob Young (713)249-8115

ROGER L. EKLUND

Residential Construction/Remodeling

ROGER EKLUND

Owner

Estimates Available  
Design & Construction  
League City, Texas 77573  
[refixit@yahoo.com](mailto:refixit@yahoo.com)

40+ Years Experience

Mobile (281)543-2658

## Sabine River Band

Available for your events



409-781-1201

[sabineriverband.com/](http://sabineriverband.com/)

## Lonestar Bluegrass Band



Contact Chris Hirsch 281-491-1680

[chirsch@windstream.net](mailto:chirsch@windstream.net)

[www.lonestarbluegrassband.com](http://www.lonestarbluegrassband.com)

### The Pet Rooster Band

Bluegrass with a few variations

Available For Your Next Event

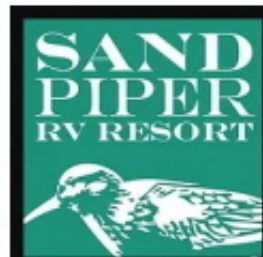
- Bluegrass festivals
- Private parties
- Family reunions
- Church functions
- Monthly bluegrass shows

Live on the radio!

Jay • R Lynn • Cathy • Doctor Phil

[www.petroosterband.com](http://www.petroosterband.com) • phone (979) 297-2709

## The City of Webster



## Rates & Reservations

[sndpipr325@aol.com](mailto:sndpipr325@aol.com)

## Sand Piper RV Park

Seawall Blvd & Ferry Road

Galveston Island, Texas 77550

409-765-9431 or 409-765-9409

<http://sandpiperrvresort.com/>



Colee and David Littlefield

Festival Management/Promoters

Salmon Lake Park

26717 Bayou Tesch Dr.  
Magnolia, TX 77354

[www.texasbluegrassmusic.com](http://www.texasbluegrassmusic.com)  
[coleebiller@aol.com](mailto:coleebiller@aol.com)

Coushatta Recreational Ranch  
c. 281-259-5453

## SPACE CITY INSPECTIONS, LLC

Professional Real Estate Inspectors  
[www.spacecityinspections.com](http://www.spacecityinspections.com)

Ed Fryday

ASHI, TPREIA, TAREI, ICC, InterNACHI, HAR

281-636-9419



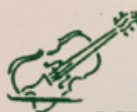
HALLIE REEVES

strolling "gypsy" violinist

Balloon Deliveries Phone-A-Fiddle-Grms  
Dinners, Weddings, Receptions, Etc.

Classical Pops Music

713-477-2730



## MUSIC LESSONS

Violin, Viola, Piano & Fiddle

HALLIE REEVES

(713) 477-2730

## LOTS OF ROOM FOR MORE SPONSORS, FOLKS!

This goes out to over 360 musicians, music fans, and bluegrass music associations every month.

As a sponsor, your ad also runs on the screen at the monthly shows in front of another 300 people.

If the economy is great and you don't need to advertise, you can always support the arts AND claim a tax deduction - we're a 501(c)3 organization.

Help us, help you!

Contact Rick Kirkland, [crk5820@msn.com](mailto:crk5820@msn.com) or call him at 281-488-2244 for more information.