

Feb 2023

## THE BAY AREA BLUEGRASS ASSOCIATION

Bluegrassing  
since 1987



Howdy folks...

It's time once again for the third Saturday bluegrass music jam and show produced by the Bay Area Bluegrass Association in Webster, Republic of Texas (the NASA area of Houston).

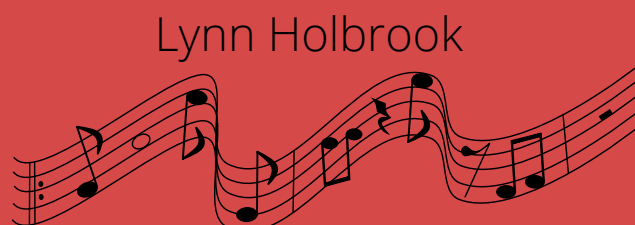
Join us on 18-Feb-2023 for an evening of fellowship, jamming and fine entertainment at the Civic Center located at 311 Pennsylvania Ave, 77598

Jamming starts at 4pm followed by a stage show at 6.30pm...  
Food and soft drinks are available.

Opening the show this month is our very own Southern Style Bluegrass Band followed by none other than East Mountain Bluegrass... all the way from Longview, Republic of Texas!

East Mountain Bluegrass began in 1994 with Art Mauldin, Mike & Julie Tucker serving at the HiWay 80 Rescue Mission in Longview, TX. The band has continued to serve every month on the third Monday for the past 27 years. Originating as an all bluegrass gospel band, East Mountain continues to sing gospel music along with bluegrass and familiar tunes, using acoustic instruments. Lynn Gray and Dennis Clute play regularly with the band and are joined by special guest Anthony Bonnette from time to time.

Make plans to attend and we'll see you there!





A special thanks to you;  
The members and fans of bluegrass!

Remember BABA is nothing without you.  
We need your help!

Your membership and donations are the key  
to keeping the show going and free.  
Without you we wouldn't be here.

So, bring a friend, tell your neighbors to come out and enjoy the show!  
Don't forget to let the BABA staff know how much you enjoy the show.

A thanks goes a long way to all the unpaid volunteers and board  
members!



located at:  
Webster Civic Center  
300 Pennsylvania Ave

NOW  
SHOWING



Southern Style Bluegrass  
and



**East Mountain Bluegrass**





# last Month's BABA Bands

*Thank  
you!*



and

White Dove





# WHO DUNNIT AT THE LAST SHOW

Minus 11  
Bluegrass  
and  
White Dove

Roger Eklund  
Rick Kirkland  
John Doyle

Elaine Bergernon  
Arvin and Sheryl  
Holland

Doug  
Lindsey

BRANDS  
FOOD  
SHOW

Rick Kirkland

Roger Eklund

Ron Moore

Richard  
Schaffhausen

EMCEE  
SOUND  
TABLE  
PHOTO

*Thank  
you!*

**"Once-A-Week BABA Jam"!**

**Luka's Barbeque and Steakhouse welcomes us to come jam on Tuesdays... EVERY WEEK!!!**

**We arrive at 6pm, for those who want to eat, and the actual jam starts at 7pm.**

**We love to see you there.**

**Luka's Barbeque and Steakhouse  
17052 SATURN LN, HOUSTON, TX 77058  
(281) 286-8669**

**LUKA'S BBQ & STEAKH**

**OPEN!**

17052

***fun***



**PLAY**







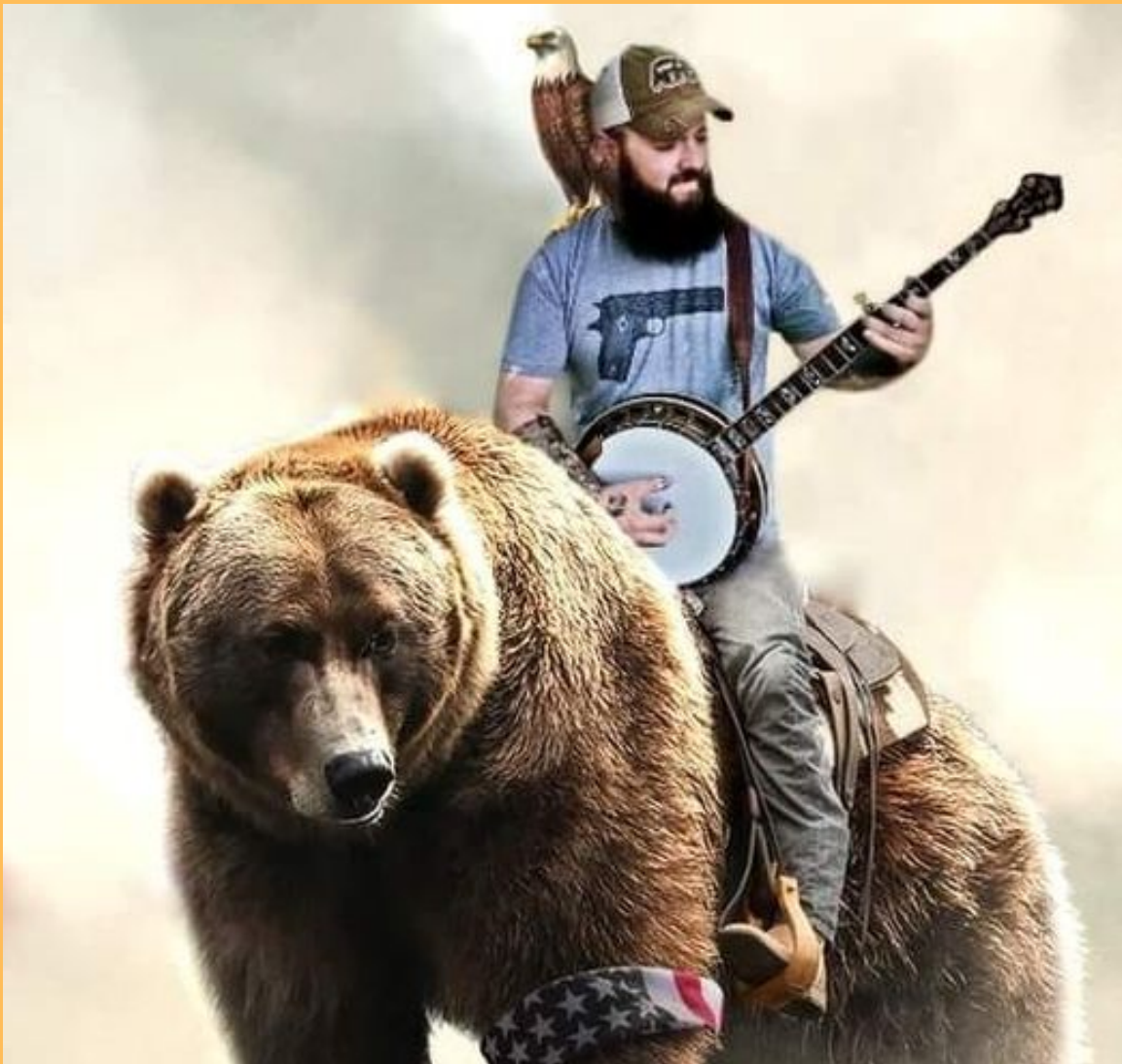




Bridge under construction.



It's a chicken coupe





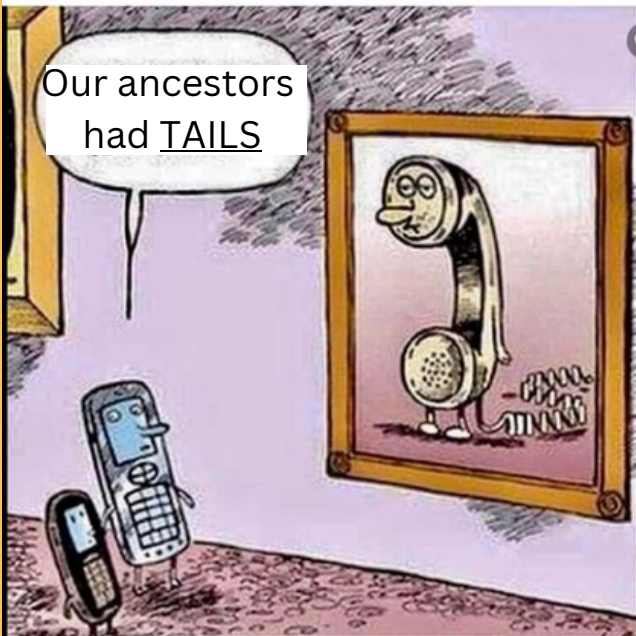


Nestflix



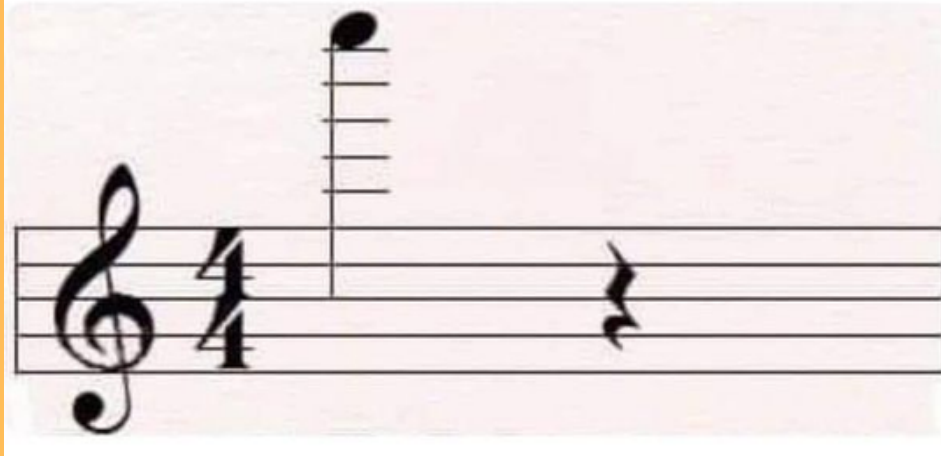
Accidental Voodoo

9GAG.COM/GAG/4676805





This might be my last  
pun of the day. I wanted  
to go out on a high note  
and then give it a rest.



Musician Humor



“A lineup of great  
musicians doesn’t  
*guarantee* a great band. It  
goes far deeper than  
[www.musiciansunite.com](http://www.musiciansunite.com)  
individual musical ability.  
You’ve got to be a great  
team and have that  
intangible chemistry too.”



Todd 'Papi' Carlos  
@TheToddWilliams

Oh great, now Germany is spying on  
us





# Membership Levels

JOIN: Online or at the show

## **Individual Membership: \$35.00 annually**

You'll become a member of the BABA family and support the free monthly shows & jams. You'll receive the BABA Bulletin Newsletter monthly, admission to workshops at the monthly shows, admission to Bluegrass in the Park for BABA members & guest, updates about Bluegrass events in the area, discounts on some bluegrass shows in the area – as well as the satisfaction of supporting BABA and Bluegrass Music in Texas.

## **Family Membership: \$50.00 annually**

You'll become a member of the BABA family with all the benefits of the individual membership for you and your immediate family. You'll support the free monthly shows & jams, receive the BABA Bulletin Newsletter monthly, get admission to workshops at the monthly shows and admission to Bluegrass in the Park for BABA members & guest, get updates about Bluegrass events in the area, discounts on some bluegrass shows in the area - and the satisfaction of supporting BABA and Bluegrass Music in Texas.

## **Gold Club Membership Individual: \$100.00 annually**

Get all the benefits of the individual membership, a Gold Club Membership Name Badge, & a BABA shirt for giving that extra support to the BABA family. You'll become a member of the BABA family and support the free monthly shows & jams, receive the BABA Bulletin Newsletter monthly, get admission to workshops at the monthly shows, admission to Bluegrass in the Park for BABA members & guest, updates about Bluegrass events in the area, discounts on some bluegrass shows in the area - and the satisfaction of supporting BABA a little extra.

## **Lifetime Member Individual: \$350.00**

Get all the benefits of BABA membership for life! You'll become a member of the BABA family and support the free monthly shows & jams, and receive the BABA Bulletin Newsletter monthly. You'll get admission to workshops at the monthly shows, admission to Bluegrass in the Park for BABA members & guest, updates about Bluegrass events in the area, discounts on some bluegrass shows in the area - and the satisfaction of supporting BABA for life.

## **Lifetime Member Family: \$500.00**

Get all the benefits of BABA membership for life for you and your immediate family! You'll become a member of the BABA family and support the free monthly shows & jams, and receive the BABA Bulletin Newsletter monthly. You'll get admission to workshops at the monthly shows, admission to Bluegrass in the Park for BABA members & guest, updates about Bluegrass events in the area, discounts on some bluegrass shows in the area - and the satisfaction of supporting BABA for life.

## **Lifetime Gold Club Membership Individual: \$1000.00**

Get all the benefits of the individual membership, A Gold Club Membership Name Badge, A BABA shirt, and knowing that you are giving that extra support to the BABA family. You'll become a member of the BABA family and support the free monthly shows & jams. You'll receive the BABA Bulletin Newsletter monthly, admission to workshops at the monthly shows, admission to Bluegrass in the park for BABA members & guest, updates about Bluegrass events in the area, discounts on some bluegrass shows in the area -and the satisfaction of supporting BABA 'above and beyond'.

# **A BIG BLUEGRASS THANKS!**

**to our members who help keep the music playing every month, and an extra shout out to those who have joined as Gold Club, Lifetime, Endowment and Foundation levels.**

**We couldn't do this without all of you!**

## **Foundation Members:**

**Ed Fryday, Mike Fuller, Chris Bagley**

## **Endowment Gift Members:**

**Phil & Fern Deans, Pat Lomas, Lisa Maranto**

**Members' names are in alphabetical order**

## **Gold Club Members**

**Doug Averitt, Mike & Pat Conwell, Dr. John Doyle, Mack Himel, Rick Kirkland family, Robert Manning, Neil Maxson, Ronald Moore, Marlene Payne,  
Laney & Shannon Sims**

***Membership in the Gold Club is payable annually. We thank you for your "extra" support.***

## **BABA Lifetime Members**

**Brad & Dee Alford, Dave Aldrich, Scott & Diana Armstrong, Doris Arnett, Chris Bagley, Hubert & Shirley Brasseaux, Cara Cooke, Eric & Kim Corgey, Lyman & Annis Cox, Paul & Dana Cutts, Robert Duke, Bill & Joni Dusenbury, Roger & Pauline Eklund, Harry Edwards, John Ellisor, Ruth Evans, George Franklin, Jason & Alicia Fricke, Ed & Becky Fryday, Paul & Lillie Futch, John & Jean Gardner, Bill & Geri Gatlin, J.B. & Nancy Graham, Jim & Sharon Greenlee, Doris Grigg, Chuck & Mary Pat Gunn, Robert & Elizabeth Hasserd, Tom Harrison, Ron & Anne Hayden, Lynn Holbrook, Arvin & Sheryl Holland, Sammy & Ottie Holloway, Jan Johnston, Stan Jones, Paul & Linda Kerr, David & Colee Littlefield, Ken & Wanda MacDonnell, Phil & Cecile Mathers, Paul & Madeline McKneely, Faber & Sandy McMullen, Patrick Milligan, Barbara Monroe, Charles & Ellen Orsburn, Mike Petitt, Bill & Glenna Pierpont, Norman Ponder, Billy Potts, Jackson Ray, Tony & Nema Redding, Karl Reid, Jack (R.I.P.) & Carol Ritter, Tom & Sandy Roberts, Jonathan & Kristine Samuell, Billy & Terry Schmidt, Jerry & Monica Scribner, Gordon Spaulding, O.K. & Sharon Stafford, Bob & Marilyn Taylor, James & Laura Taylor, Scott Teven, Charlene Threlkeld, David Towery, Helen Vinson, Viola Wakefield, Larry Wenner, Paul Williams.**



**Now that the BABA shows are up and running, we  
still need you to volunteer!  
Just grab Rick and say,  
“Hey! I want to help!  
Please tell me what to do.”**

**Membership  
BABA table  
Sound  
Greeters  
Set-up**

**Member drawing Prizes**

**Backup Photographer  
Take-down**

**Billing (Ads &  
Membership)**

**Pass the Bucket  
Food Table**



## **About BABA**

The Bay Area Bluegrass Association (BABA) was organized in 1986 and incorporated in 1987 under the Texas Non-Profit Corporation Act. The primary purpose of BABA is to preserve, encourage, and promote Bluegrass and Bluegrass gospel music as an American art form. BABA promotes Bluegrass through being active in community events, fund raisers, festivals, and monthly shows. BABA is a 501(c)(3) tax deductible organization; see any Director for information. The monthly show is free to the public and features Bluegrass from the local and national scene. The stage show begins at 6:00 PM, but pickers are welcome to bring their instruments and come earlier to jam.

Tasty, inexpensive food is available at the show, and there are raffles, door prizes, and Bluegrass merchandise for sale. This is a 'no alcohol' event, but there's plenty of music and great family fun!

Proceeds from donations, sponsors, memberships, sales, and raffles are used to keep the doors open and the regular shows free to the public. They also maintain and replace sound equipment, storage, security, and expense of keeping the music playing.

We thank you for your attendance, your generosity, and your love of the music.

## **SUPPORTING BANDS of the BAY AREA BLUEGRASS ASSOCIATION**

**ALMOST HEAVEN:** Tony Redding, 281-910-4396 [tonynema10@gmail.com](mailto:tonynema10@gmail.com)  
[www.bluegrassrising.net/#!/about-our-band/c1mys](http://www.bluegrassrising.net/#!/about-our-band/c1mys)

**THE BLUEGRASS SOLUTION:** Mike Fuller, 281-989-8719, [mike@fullersguitar.com](mailto:mike@fullersguitar.com) ;  
[www.thebluegrasssolution.com](http://www.thebluegrasssolution.com)

**THE BRAZOS RIVER PICKERS:** Bob Young, 713-249-8115, [bob.young@spectracf.com](mailto:bob.young@spectracf.com) ;  
[www.brazosriverpickers.com](http://www.brazosriverpickers.com)

**THE GREER FAMILY BAND (Brenham):** Lawrence Greer, 979-454-1120, [lgreer@txsun.net](mailto:lgreer@txsun.net) ;  
[www.greerfamilyband.com](http://www.greerfamilyband.com)

**THE LAUGHING LIZARDS STRING BAND:** Steve Bing, 225-405-9707, [stevebingmusic@aol.com](mailto:stevebingmusic@aol.com) ;  
[www.laughinglizardsband.com](http://www.laughinglizardsband.com)

**LONESTAR BLUEGRASS BAND:** Chris Hirsch, 281-788-3840, [cshirsch@windstream.net](mailto:cshirsch@windstream.net) ;  
[www.lonestarbluegrassband.com](http://www.lonestarbluegrassband.com)

**OLD DIRT ROAD BAND:** Dave Culbertson, 832-544-4373 ; [dculbertson@consolidated.net](mailto:dculbertson@consolidated.net)

**OUT OF THE BLUE SEABROOK:** Greg English, 830-387-9156

**PET ROOSTER:** Lynn Holbrook, 832-584-5575, [info@petroosterband.com](mailto:info@petroosterband.com) ;  
[www.petroosterband.com](http://www.petroosterband.com)

**SABINE RIVER BEND BAND:** Earl Cochran, [earlcochranjr@aol.com](mailto:earlcochranjr@aol.com) ; [www.sabineriverbend.com](http://www.sabineriverbend.com)

**SKIDAWAY RIVER:** Doug Burtchaell, 281-380-0157 [dburtchaell@comcast.net](mailto:dburtchaell@comcast.net)

**SOUTHERN STYLE:** Rick Kirkland, 281-488-2244, [crk5820@msn.com](mailto:crk5820@msn.com) ;  
[www.southernstylebluegrassband.com](http://www.southernstylebluegrassband.com)

**SOWELL FAMILY PICKERS:** Cindy Sowell, 979-251-2605 [www.thesowellfamilypickers.com](http://www.thesowellfamilypickers.com)

**STRINGS OVER TEXAS:** Lynn Holbrook, 832-584-5575

**WHITE DOVE:** Glen Beauboeuf, 832-289-7895 [glen\\_angieb@yahoo.com](mailto:glen_angieb@yahoo.com) ; Facebook - White Dove

Interested in adding your band to this list?

Contact Lynn Holbrook at 832-584-5575

or email him at [rllynnholbrook@gmail.com](mailto:rllynnholbrook@gmail.com)

## AUSTIN AREA, CTBA

- **EVERY SUNDAY, CTBA**, 3-5 PM, at Oskar Blues Brewery, 10420 Metric Blvd Ste 150, Austin
- **(NEW 2022)Every Sunday** 12:00-3:00 Suds Monkey Brewery and Pizzeria (12024 US-290, Austin 78737) in the breezy, open-air space of Suds Monkey's new location between Austin and Dripping Springs. For more information, see Suds Monkey's Facebook page or email CTBA representative, Natalie Turner.
- **3rd Thursday,,** 7:15-9:45 pm 9900 west Palmer Lane Musician's Woodshed

For more information about Central Texas Jams and shows there is a daily calendar of other events at <https://centraltexasbluegrass.org/Bluegrass-Events>

## BLANCO

- **1st Saturday**, 12-3 PM, 2nd Mile Recreation Center, 512 Pecan, Blanco, TX, (830) 554-0006

## BLUFFDALE

- **Every Thursday** 6:30-10 PM, Cedar Point Music Club, Cedar Point Community Building. 2481 & 205 Bluffdale, TX

## BOERNE

- **2nd & 4th Saturday**, Boerne Bluegrass Jam, at The AgriCultural, Boerne, 1-3 PM, 102 City Park Road, Info: contact Dave Moore (210) 846-9745, dmboerne@gvtc.com

## CLEBURNE

- **3rd Saturday**, jam begins at 2 p.m. and show at 5 p.m., provided by Paluxy River Bluegrass Assn., held at Chisholm Trail Museum, 101 Chisholm Trail, Cleburne, TX 76033, paluxyriverbluegrass@gmail.com

## CLEAR LAKE

- **Tuesdays** 7 to 9 pm Luka's BBQ and Steakhouse 17052 SATURN LN, HOUSTON  
Call (281) 286-8669

## CYPRESS

- **Every Monday**, 6-8:30 PM, Good Shepherd United Methodist Church, 20155 Cypresswood Dr. Tony and Nema: Email [tonynema10@gmail.com](mailto:tonynema10@gmail.com), phone 281-910-4396
- **2nd Friday**, Bluegrass Music Knight Out and Jam  
Weekley Community Center, 8440 Greenhouse Road  
Jam starts at 4 pm. Show starts at 6:30 pm.  
Contact Tony and Nema for more info, Phone: 281-910-4396, Email: [tonynema10@gmail.com](mailto:tonynema10@gmail.com)  
Facebook: Cypress Bluegrass Rising Group, <https://www.facebook.com/BluegrassRising/>

## ENLOE, TX

- **3rd Saturday** Bluegrass Jam, 2-6:30 PM.  
Sweet Enloe Opry, Lexie Street



# Jams and Shows last updated August 2022

2/3

## FAYETTEVILLE

A little patience, please!

- **2nd Saturday (Jan.-Nov.),** Fayetteville Picking Park, Jam, 1-? PM, on the Courthouse Square, Slow Jam - 1 PM, Lou-Lou Barbour (979) 451-0067 or [banjobooklady@yahoo.com](mailto:banjobooklady@yahoo.com)

## GARLAND, TX

- **Saturdays,** (April-Nov.) Garland Town Square Jams (held outside), 6 PM-?, 200 N. 5th St.

## GLEN ROSE

- **3rd Saturday,** Bluegrass Stage Show, hosted by Paluxy River Bluegrass Assn./Oakdale Park, [txartisan.com](http://txartisan.com) for details.

## GRAPEVINE

- **1st Saturday,** Bluegrass at the Settlement, noon-4 PM, picking, show and shopping, 206 W. Hudgins, [southwestbluegrassclub@dfw.org](mailto:southwestbluegrassclub@dfw.org)
- **2nd Saturday** Southwest Bluegrass Club Meeting, Show and Jam 11:00 AM to 3:00 PM at the First Baptist Church, 113 E. Texas St. [www.southwestbluegrassclub.org](http://www.southwestbluegrassclub.org)

## HOUSTON

- **2nd Saturday,** 7:30 PM Houston Folklore Society, Admission charged, *folk music*, West University Community Building, 6104 Auden. Phone 281-347-3235 [houstonfolkmusic.org](http://houstonfolkmusic.org)
- **3rd Saturday** North Harris County Dulcimer Society. see website. 2:00 PM, Advent Luthern Church, 5820 Pinemont Dr, [www.nhcads.com](http://www.nhcads.com)
- **Wednesdays** Buffalo Grille Bluegrass Jam, 6-8PM, 4080 Bissonet St; All skill levels welcome

## LLANO

- **3rd Saturday,** Open Bluegrass Jam, 1-4 PM, at the Fuel Coffee House, 106 E. Main.

## PEARL

- **1st Saturday, (2nd Sat in Sept)** Pearl Bluegrass Jam & Stage Show, Jam all day/night, Stage show 12-10 PM, food and RV hookups available. Pearl Community Center, on FM 183, 7 mi South of Purmela, [info@pearlbluegrass.com](mailto:info@pearlbluegrass.com); [www.pearlbluegrass.com](http://www.pearlbluegrass.com)

## SAN ANTONIO

- **Every Monday,** "In-A-Jam" Bluegrass Jam Session, 2-4 PM, at The BBQ Station, 1610 N. E. Loop 410, (210) 824-9191 HerbKnowlson or Sheryl Sultenfuss
- **Every Tuesday,** "Jam Session, 6:30-8:30 PM, Everyone welcome, mostly country, some bluegrass, The BBQ Station, 1610 N. E. Loop 410, More info: [Ssultenfuss@gmail.com](mailto:Ssultenfuss@gmail.com), (210) 824-9191

## SHULENBERG

- **1st & 3rd Tuesday,** Jam, 6:30 PM, at Schulenburg RV Park Community Center, 65 N. Kessler Ave., Laretta Baumgarten - (979) 743-4388, [camp@schulenburgrvpark.com](mailto:camp@schulenburgrvpark.com)

## SUGARLAND

- **Every Tuesday** 6:30 to 9:00 PM, 1st Presbyterian Church, 502 Eldridge Rd, Sugarland. Bluegrass and acoustic instruments only. Contact [samgrice@windstream.net](mailto:samgrice@windstream.net) or 832-428-3165

**TOMBALL**

- **4th Saturday**, Jam, 1-4 PM, Kleb Woods Nature Center, 20303 Draper Rd, Tony and Nema, Call 281-910-4396, email [tonynema10@gmail.com](mailto:tonynema10@gmail.com)

**WEBSTER**

- **3rd Saturday (Jan. - Nov.)**, Bay Area Bluegrass Jam & Free Bluegrass Show, Jam - 3:30 PM, Show - 6:30 PM, Webster Civic Center,, 311 Pennsylvania Ave., (281) 316-4108, (281) 332-1826

**WOODVILLE**

- **4th Saturday**, Triple Creek RV Park in Woodville, Where the bluegrass jam is indoors and there's food and fellowship galore. You will feel right at home with the fun folks and musicians. [Triplecreekrv.com](http://Triplecreekrv.com)

Please remember to be wise and always email or call ahead to make sure they're meeting before you use precious gas.

In addition pay attention to *when the list was updated*.

Checking all the jams is time-consuming, and not everyone calls or emails back, which is why it isn't updated constantly... It's also why this is the first update since many jams shut down from covid restrictions.

A very special thanks to Carol Vaughn for her hard work calling everyone for updates.

You are awesome!!.... PE



GOT KIDS?  
GRANDKIDS?  
Electrified pals?

Come by the  
shop and see  
our fine  
electric  
instruments  
and amps, too.  
Starter kits to  
professional  
grade.  
Check us out!



116 North Loop

Houston, TX 77008

713-880-2188 [www.fullersguitar.com](http://www.fullersguitar.com)

For all your Bluegrass Needs

**Acoustic Guitars**

**Vintage Kay Basses**

**Mandolins**

**Banjos**

**Dobros**

**Accessories**



*Eastman*  
HANDCRAFTED  
GUITARS & MANDOLINS

*Epiphone*

*Fender*

*Gibson*

*GRETSCH*

*KRAMER*

*Squier*  
by Fender

*Taylor*  
QUALITY GUITARS

*Martin & Co.*  
EST. 1833

*Rickenbacker*



*Liberty*

CHIROPRACTIC

281-484-9492

Advertise to 300+ people every issue!

## ADVERTISING RATES

Business Cards

\$50 per year

\$5 per issue

Half Page

\$150 per year

\$15 per issue

Quarter Page

\$75 per year

\$10 per issue

Full Page

\$300 per year

\$30 per issue

email for information: bayareabluegrass2@aol.com



Anton "Tony" Ullrich

is celebrating 50 years (1972 - 2022) of teaching folks in the greater Houston area to play Bluegrass style banjo.

Your private banjo lessons begin with an introduction to BanjerTab's unique approach to creating syncopation (that 'ahead of the beat' bounce) that you hear in the recordings of the first generation greats, who had no other form of learning than creating their banjo style 'as they went.'

Once you're familiar with BanjerTab, choose the area of playing you want to focus on: Scruggs style, full-chord back-up, mid-neck / high-neck picking, melodic style (fiddle tunes /back-up), or specific songs you have always wanted to play.

The expertise gained through 56 years of playing and 47 years of teaching is available to you now.

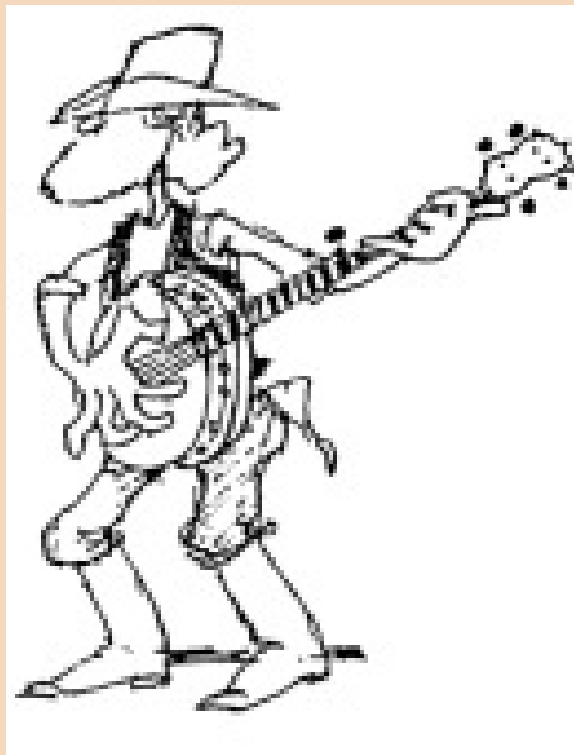
Choose videotape lessons or come for private lessons in Houston.

Call 713-785-6655 or fax 713-532-6655



**Authorized Deering Banjo  
Dealer  
Home of the Texas Banjo**

A promotional graphic for 'World Music'. It features a woman with blonde hair smiling and holding a sheet of music. Overlaid on the image are a banjo and a violin. The text 'World Music' is at the top in a large, stylized font. Below it, the address '3750 Cartwright Rd.' and phone number '281-403-1615' are listed. A bulleted list includes: 'We teach ALL INSTRUMENTS, including voice', 'DVD Video &amp; CD Audio Recording', 'Instrument Sales', and 'Repair &amp; Rental'. A starburst graphic says 'GIFT certificates available'. At the bottom left is a small map showing the location on Hwy 6 near Cartwright. The website 'worldmusicsugarland.com' is at the bottom.



**anton@banjerproductions.com**  
**www.5stringbanjer.com**

# Texas Air Services, Inc

281-337-7763

www.texasairservices.com



"A trusted partner in Aviation & Engineering Innovations"

## SPACE CITY INSPECTIONS, LLC

Professional Real Estate Inspectors

www.spacecityinspections.com

Ed Fryday

ASHI, TPREIA, TAREI, ICC, InterNACHI, HAR

281-636-9419

## Bluegrass Music Rising in NW Houston

### Bluegrass Music Knight Out Show and Jam

2nd Friday Each Mo.;

and Monday Night Jam: 6-9:pm

\* Location (for both): Weekley Community Center, 8440 Greenhouse Rd., Cypress, TX 77433

4th Saturday Jam @ Kleb Woods Nature Ctr, Tomball, TX

Contact: Tony 281-373-1777, 281-910-4396;

Website: www.bluegrassrising.net

Email: [tonynema@earthlink.net](mailto:tonynema@earthlink.net); and Booking of "Almost Heaven Bluegrass Band"

## Mary E. Conn & Associates

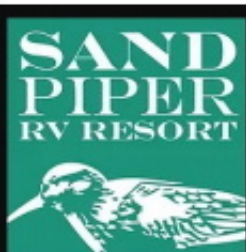
MARY E. CONN & ASSOCIATES



MARY ELIZABETH CONN  
(713) 385-4190  
Licensed in Texas and California

[mary@maryconn.com](mailto:mary@maryconn.com)  
440 Lindbergh Blvd., Suite 100  
Houston, Texas 77059  
www.maryconn.com

## The City of Webster



## SPACE CITY INSPECTIONS, LLC

Professional Real Estate Inspectors

www.spacecityinspections.com

Ed Fryday

ASHI, TPREIA, TAREI, ICC, InterNACHI, HAR

281-636-9419

## Southern Style

Southern Style Bluegrass Band: 281-488-2244



## MUSIC LESSONS

Violin, Viola, Piano & Fiddle

HALLIE REEVES

(713) 477-2730

## FULLER'S VINTAGE GUITAR

Playing Music From America's Roots

### Brazos River Pickers

www.brazosriverpickers.com

Toe-Tapping Bluegrass and Good Old-Time Music  
Guaranteed to liven up any event!

Rex Mann

Mandolin/Vocals

For Bookings - Bob Young (713)249-8115

## Lonestar Bluegrass Band



Contact Chris Hirsch 281-491-1680  
[chirsch@windstream.net](mailto:chirsch@windstream.net)

www.lonestarbluegrassband.com

ROGER L. EKLUND

Residential Construction/Remodeling

ROGER EKLUND

Owner

Estimates Available  
Design & Construction  
League City, Texas 77573  
[refixit@yahoo.com](mailto:refixit@yahoo.com)

40+ Years Experience

Mobile (281)543-2658

## Sabine River Band

Available for your events



409-781-1201

sabineriverband.com/

## The Pet Rooster Band

Bluegrass with a few variations



Available for Your Next Event

- Bluegrass festivals
- Private parties
- Family reunions
- Church functions
- Monthly bluegrass shows

Like Us On FB

facebook

Jay • R. Lynn • Cathy • Doctor Phil

www.petroosterband.com • phone (979) 297.2709

## Rates & Reservations

sndpipr325@aol.com

## Sand Piper RV Park

Seawall Blvd & Ferry Road

Galveston Island, Texas 77550

409-765-9431 or 409-765-9409

<http://sandpiperrvresort.com/>



## HALLIE REEVES

strolling "gypsy" violinist

Balloon Deliveries Phone-A-Fiddle-Grams  
Dinners, Weddings, Receptions, Etc.

Classical Pops Music

713-477-2730

# Liberty CHIROPRACTIC

12325 Scarsdale Blvd, Ste A  
Houston, TX 77089

281-484-9492

www.libertychiro.us