

January
2024

The BABA Bulletin

THE BAY AREA BLUEGRASS ASSOCIATION



It's all about the Music! 3rd Saturday Show!

Enhancing your BABA experience with:

- more *Jam Rooms*
- quality *bluegrass bands*,
- *tasty food and drink*
- *fellowship* in a *family friendly* environment.



Oh, yes and I almost forgot....it's **FREE!**

(Donations accepted)

Start 2024 off with us and bring a friend!

City of Webster Civic Center

300 Pennsylvania Ave

Parking on multiple sides of building

Handicapped parking in front

<https://www.facebook.com/groups/200547386668323>



Remember BABA is nothing without you.



Have you renewed your membership since Covid or put off joining for some time now?

Your membership and donations are the key to keeping the show going and free.



Don't forget to let the BABA staff know how much you enjoy the show. Your thanks goes a long way to all the volunteers and board members!

A place for the old and the new sounds of Americana bluegrass music!



Billy Strings



The McCoury's

"Blue Moon of Kentucky Keep on Shining"



Bill Monroe

APPEARING JANUARY 20TH

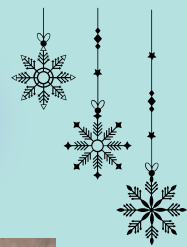


https://www.facebook.com/SabineRiverBendBluegrassBand/about_details

Sabine River Bend got up and running in 2008. Original members include Earl Cochran on guitar, Trey Cochran on banjo, Reuben Maddox on mandolin, Eddie Ortego on resonator, and Brad Hight on the bass. The Sabine River Bend Band plays regular shows around the Beaumont, Texas area, and festivals in Texas, Louisiana, Oklahoma, and Arkansas. You can follow us on Twitter @sabineriverbend. Or the website **These guys are top shelf entertainment!**



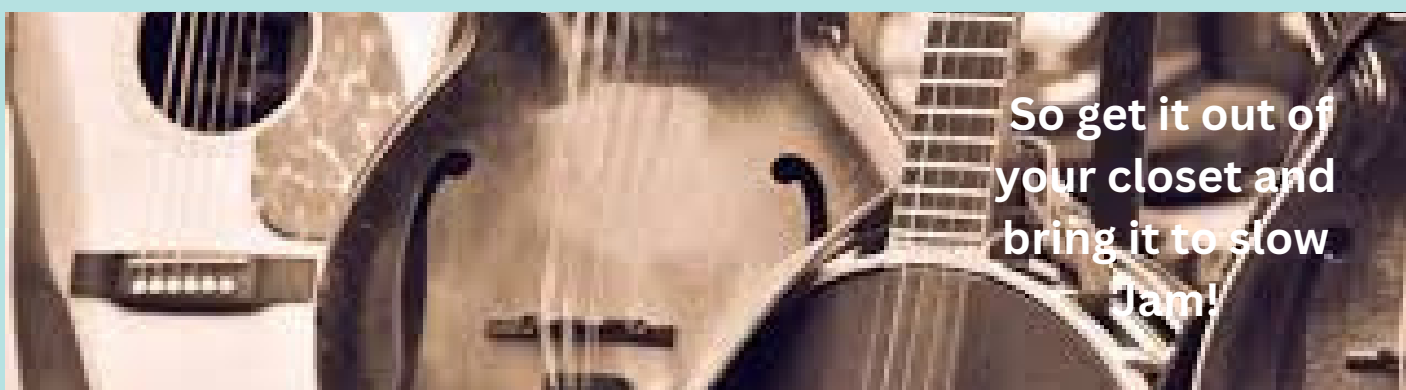
FEBRUARY 17TH BAND



Silk 'n Steel

A product of a long time friendship between Glen and Angie Beaubouef of White Dove and Laney Sims of Buffalo Nickel.

Now throw in a newbie to our bluegrass world, Laney's gracious and talented wife LaDonna! What do you get? Well a happy bunch of pickers playing a variety of instruments and singing tunes we've loved through the years...from gospel to bluegrass...to the Eagles and beyond! Feel the Love from these two couples as they share their hearts with us!



So get it out of
your closet and
bring it to slow
jam!

November Show at a Glance

Our Thanks to Southern Style



I can't hear the banjo!!

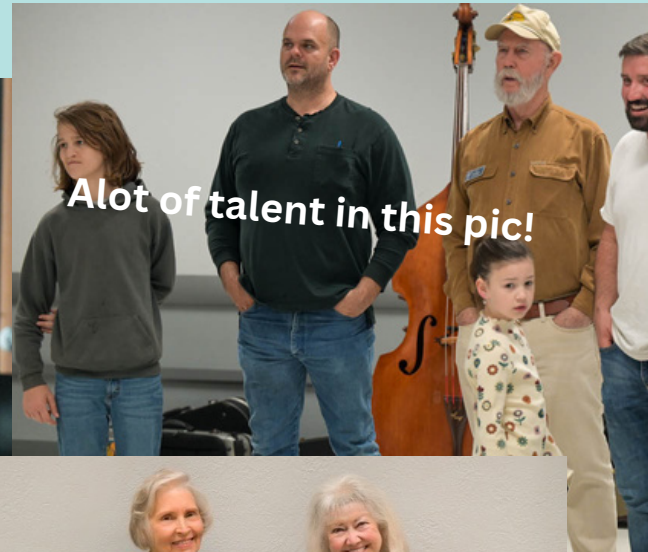


what's the 2nd verse???

Why the key of F?



A lot of talent in this pic!



Is it my turn yet???

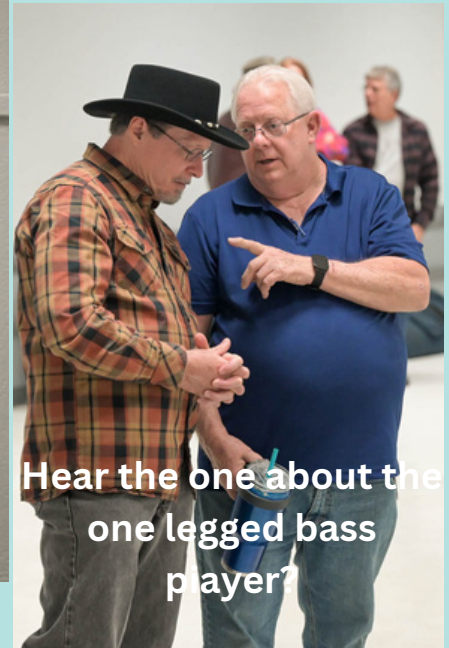


Hot dogs and bluegrass! A great combo!

November Show at a Glance



Minus II



Hear the one about the one legged bass player?



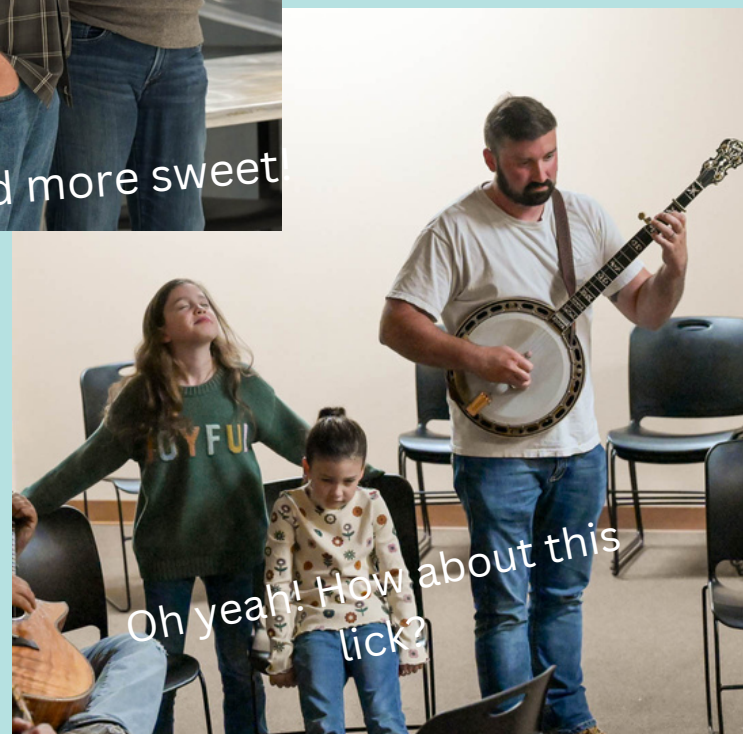
I'll put a \$20 in if you will!



More Pineapple cake, please!



No sound more sweet

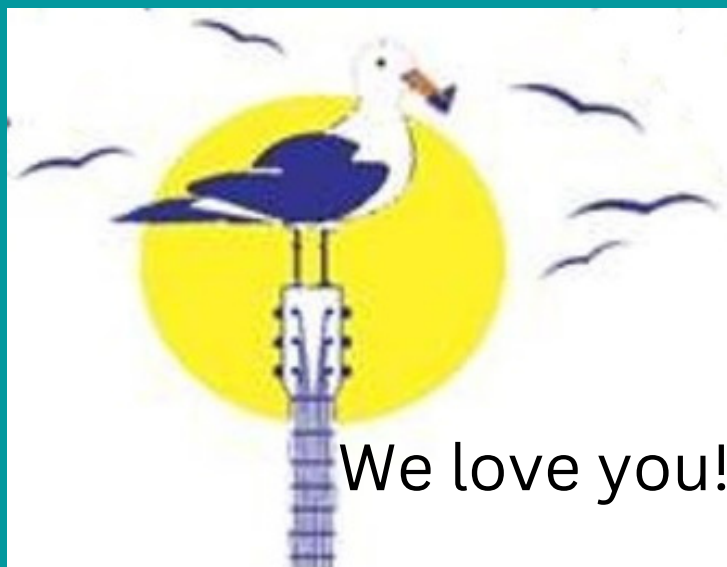


Oh yeah! How about this lick?



Thanks for your Service!

-Rick Kirkland-



BABA applauds the 17 years Rick has led the many duties as our President with tireless passion and a deep love for the music and the people.

When submitting his resignation at the end of the year he told the board "I'm not going anywhere 'cause BABA is my family and it's time to pass on the gauntlet."

Please express your thanks to Rick personally as we acknowledge his great years of dedication.





"Once-A-Week BABA Jam"!

**Luka's Barbeque and Steakhouse welcomes us to come jam on
Tuesdays... EVERY WEEK!!!**

**We arrive at 6pm, for those who want to eat, and the actual jam
starts at 7:00 pm.**

**Beginner, intermediate, advanced talent
We'd love to see you there to pick or just listen!**

**Luka's Barbeque and Steakhouse
17052 SATURN LN, HOUSTON, TX 77058
(281) 286-8669**



HOW CAN I HELP?

MAKING A DIFFERENCE



DO YOU KNOW?

All of the money raised goes to buying food, rent and security plus equipment for show.

You have an opportunity to make BABA better by finding a place to serve.

You can help with your participation and ideas.

Most of all, share your love of Bluegrass with your family, friends and neighbors.

WAYS TO CONTRIBUTE.....

**SEND IN YOUR
PICTURES OR
SUBMIT A BLUEGRASS
STORY OR A SPECIAL
EVENT FOR THE
NEWSLETTER TO GREG
ENGLISH**

genglish43@gmail.com

**Take home BABA flyers to
share with your favorite
businesses, church,
organizations, senior nursing
homes and store bulletin
boards.**

**GIVE A TAX DEDUCTIBLE
DONATION TO OFFSET
EXPENSES.
DONATE ITEMS FOR
AUCTION.**

BABA in the community

Music for Shriners Fund
Raiser Event. - Shrimp boil



Contact BABA for music at your next event/function!



Membership Levels

JOIN or RENEW: Online or at the show

Individual Membership: \$35.00 annually

You'll become a member of the BABA family and support the free monthly shows & jams. You'll receive the BABA Bulletin Newsletter monthly, admission to workshops at the monthly shows, admission to Bluegrass in the Park for BABA members & guest, updates about Bluegrass events in the area, discounts on some bluegrass shows in the area – as well as the satisfaction of supporting BABA and Bluegrass Music in Texas.

Family Membership: \$50.00 annually

You'll become a member of the BABA family with all the benefits of the individual membership for you and your immediate family. You'll support the free monthly shows & jams, receive the BABA Bulletin Newsletter monthly, get admission to workshops at the monthly shows and admission to Bluegrass in the Park for BABA members & guest, get updates about Bluegrass events in the area, discounts on some bluegrass shows in the area - and the satisfaction of supporting BABA and Bluegrass Music in Texas.

Gold Club Membership Individual: \$100.00 annually

Get all the benefits of the individual membership, a Gold Club Membership Name Badge, & a BABA shirt for giving that extra support to the BABA family. You'll become a member of the BABA family and support the free monthly shows & jams, receive the BABA Bulletin Newsletter monthly, get admission to workshops at the monthly shows, admission to Bluegrass in the Park for BABA members & guest, updates about Bluegrass events in the area, discounts on some bluegrass shows in the area - and the satisfaction of supporting BABA a little extra.

Lifetime Member Individual: \$350.00

Get all the benefits of BABA membership for life! You'll become a member of the BABA family and support the free monthly shows & jams, and receive the BABA Bulletin Newsletter monthly. You'll get admission to workshops at the monthly shows, admission to Bluegrass in the Park for BABA members & guest, updates about Bluegrass events in the area, discounts on some bluegrass shows in the area - and the satisfaction of supporting BABA for life.

Lifetime Member Family: \$500.00

Get all the benefits of BABA membership for life for you and your immediate family! You'll become a member of the BABA family and support the free monthly shows & jams, and receive the BABA Bulletin Newsletter monthly. You'll get admission to workshops at the monthly shows, admission to Bluegrass in the Park for BABA members & guest, updates about Bluegrass events in the area, discounts on some bluegrass shows in the area - and the satisfaction of supporting BABA for life.

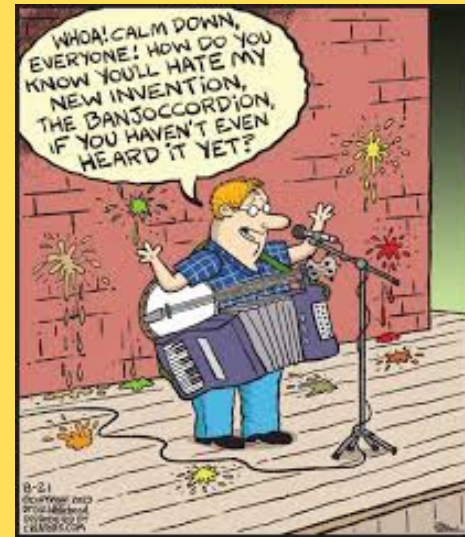
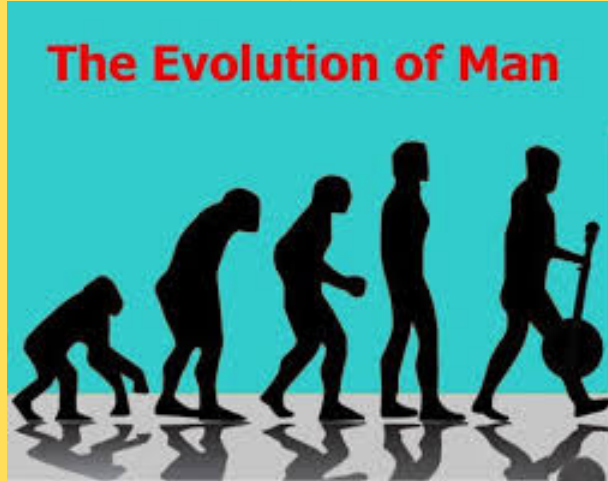
Lifetime Gold Club Membership Individual: \$1000.00

Get all the benefits of the individual membership, A Gold Club Membership Name Badge, A BABA shirt, and knowing that you are giving that extra support to the BABA family. You'll become a member of the BABA family and support the free monthly shows & jams. You'll receive the BABA Bulletin Newsletter monthly, admission to workshops at the monthly shows, admission to Bluegrass in the park for BABA members & guest, updates about Bluegrass events in the area, discounts on some bluegrass shows in the area -and the satisfaction of supporting BABA 'above and beyond'.



You do know that Wagon Wheel is a JAM killer!

COMIC RELIEF



Dueling Banjos or something, IDK

What's the difference in a
bass fiddle and a banjo?
The bass takes longer to
burn!



What's the Difference Between
a Violinist and a Pizza?



Pizza Can Feed a Family of Four



Funny bluegrass
ballad is about an
outhouse — and
an electric fence

A BIG BLUEGRASS THANKS!

to our members who help keep the music playing every month, and an extra shout out to those who have joined as Gold Club, Lifetime, Endowment and Foundation levels.

We couldn't do this without all of you!

Foundation Members:

Ed Fryday, Mike Fuller, Chris Bagley

Endowment Gift Members:

Phil & Fern Deans, Pat Lomas, Lisa Maranto

Members' names are in alphabetical order

Gold Club Members

**Doug Averitt, Mike & Pat Conwell, Dr. John Doyle, Mack Himel, Rick Kirkland family, Robert Manning, Neil Maxson, Ronald Moore, Marlene Payne,
Laney & Shannon Sims**

Membership in the Gold Club is payable annually. We thank you for your "extra" support.

BABA Lifetime Members

Brad & Dee Alford, Dave Aldrich, Scott & Diana Armstrong, Doris Arnett, Chris Bagley, Hubert & Shirley Brasseaux, Cara Cooke, Eric & Kim Corgey, Lyman & Annis Cox, Paul & Dana Cutts, Robert Duke, Bill & Joni Dusenbury, Roger & Pauline Eklund, Harry Edwards, John Ellisor, Ruth Evans, George Franklin, Jason & Alicia Fricke, Ed & Becky Fryday, Paul & Lillie Futch, John & Jean Gardner, Bill & Geri Gatlin, J.B. & Nancy Graham, Jim & Sharon Greenlee, Doris Grigg, Chuck & Mary Pat Gunn, Robert & Elizabeth Hasserd, Tom Harrison, Ron & Anne Hayden, Lynn Holbrook, Arvin & Sheryl Holland, Sammy & Ottie Holloway, Jan Johnston, Stan Jones, Paul & Linda Kerr, David & Colee Littlefield, Ken & Wanda MacDonnell, Phil & Cecile Mathers, Paul & Madeline McKneely, Faber & Sandy McMullen, Patrick Milligan, Barbara Monroe, Charles & Ellen Orsburn, Mike Petitt, Bill & Glenna Pierpont, Norman Ponder, Billy Potts, Jackson Ray, Tony & Nema Redding, Karl Reid, Jack (R.I.P.) & Carol Ritter, Tom & Sandy Roberts, Jonathan & Kristine Samuell, Billy & Terry Schmidt, Jerry & Monica Scribner, Gordon Spaulding, O.K. & Sharon Stafford, Bob & Marilyn Taylor, James & Laura Taylor, Scott Teven, Charlene Threlkeld, David Towery, Helen Vinson, Viola Wakefield, Larry Wenner, Paul Williams.

Ways to Serve:

**Membership, form a Jam Band,
BABA welcome table,
Sound set up & tear down,
Greeters, Room Set-up
Member drawing Prizes

Backup Photographer
Billing (Ads & Membership),
Pass the Bucket, Food Table,
Lead Slow Jam, Publicity**

**We need
volunteers!
Just grab a board
member and say,
“Hey! I want to
help!”**

The Bay Area Bluegrass Association (BABA) was organized in 1986 and incorporated in 1987 under the Texas Non-Profit Corporation Act. The primary purpose of BABA is to preserve, encourage, and promote Bluegrass and Bluegrass gospel music as an American art form. BABA promotes Bluegrass through being active in community events, fund raisers, festivals, and monthly shows.

BABA is a 501(c)(3) non-profit organization;

see any Director for information. The monthly show is free to the public and features Bluegrass from local and national levels.

The stage show begins at 6:30 & 7:30 pm, but pickers are welcome to come at 4:30 to jam. Follow the signs to 3 Jam rooms. Beginners will love the Slow Jam to learn the basics; jam etiquette, and the chord progressions to many traditional bluegrass tunes.

Tasty, inexpensive food is available at the show, and there maybe raffles, door prizes, and Bluegrass merchandise for sale. This is a ‘no alcohol’ event, but there’s plenty of music and great family fun! Proceeds from donations, sponsors, memberships, sales, and raffles are used to keep the doors open and the regular shows free to the public. They also maintain and replace sound equipment, storage, security, and expense of keeping the music playing.

We thank you for your attendance, generosity, and love of the music.

SUPPORTING BANDS of the BAY AREA BLUEGRASS ASSOCIATION

ALMOST HEAVEN: Tony Redding, 281-910-4396 tonynema10@gmail.com

www.bluegrassrising.net/#!/about-our-band/c1mys

The Bluegrass Pals members are Randy Powell, Jeff Robertson, Janine Carter...

THE BLUEGRASS SOLUTION: Mike Fuller, 281-989-8719, mike@fullersguitar.com ;

www.thebluegrasssolution.com

THE BRAZOS RIVER PICKERS: Bob Young, 713-249-8115, bob.young@spectracf.com ;

www.brazosriverpickers.com

BUSTOS FAMILY BAND

EAST MOUNTAIN BLUEGRASS BAND / JULIE TUCKER FOR CONTACT

THE LAUGHING LIZARDS STRING BAND: Steve Bing, 225-405-9707, stevebingmusic@aol.com ;

www.laughinglizardsband.com

LONESTAR BLUEGRASS BAND: Chris Hirsch, 281-788-3840, cshirsch@windstream.net ;

www.lonestarbluegrassband.com

MINUS II BLUEGRASS BAND / LYNN HOLOBROOK FOR CONTACT

OLD DIRT ROAD BAND: Dave Culbertson, 832-544-4373 ; dculbertson@consolidated.net

MERMAID JUNCTION: Greg English, 830-387-9156/ gemglish43@gmail.com

WWW.MERMAIDJUNCTION.ORG

PET ROOSTER: Lynn Holbrook, 832-584-5575, info@petroosterband.com ;

www.petroosterband.com

PRAIRIE GRASS BAND

THE PURPLE HULLS

SABINE RIVER BEND BAND: Earl Cochran, earlcochranjr@aol.com ; www.sabineriverbend.com

SKIDAWAY RIVER: Doug Burtchaell, 281-380-0157 dburtchaell@comcast.net

SOUTHERN STYLE: Rick Kirkland, 281-488-2244, crk5820@msn.com

[;www.southernstylebluegrassband.com](http://www.southernstylebluegrassband.com)

STRINGS OVER TEXAS: Lynn Holbrook, 832-584-5575

21 STRING SALUTE

WHITE DOVE: Glen Beauboeuf, 832-289-7895 glen_angieb@yahoo.com ; Facebook - White Dove

Interested in adding your band to this list?

Contact Lynn Holbrook at 832-584-5575

or email him at rllynnholbrook@gmail.com

Jams and Shows last updated August 2022

1/3

AUSTIN AREA, CTBA

EVERY SUNDAY, CTBA, 3-5 PM, at Oskar Blues Brewery, 10420 Metric Blvd Ste 150, Austin

Every Sunday 12:00-3:00 Suds Monkey Brewery and Pizzeria (12024 US-290, Austin 78737) in the breezy, open-air space of Suds Monkey's new location between Austin and Dripping Springs. For more information, see Suds Monkey's Facebook page or email CTBA representative, Natalie Turner.

3rd Thursday,, 7:15-9:45 pm 9900 west Palmer Lane Musician's Woodshed

For more information about Central Texas Jams and shows there is a daily calendar of other events at <https://centraltexasbluegrass.org/Bluegrass-Events>

BLANCO

1st Saturday, 12-3 PM, 2nd Mile Recreation Center, 512 Pecan, Blanco, TX, (830) 554-0006

Bluffdale

Every Thursday 6:30-10 PM, Cedar Point Music Club,

Cedar Point Community Building. 2481 & 205 Bluffdale, TX

BOERNE

2nd & 4th Saturday, Boerne Bluegrass Jam, at The AgriCultural, Boerne, 1-3 PM,
102 City Park Road, Info: contact Dave Moore (210) 846-9745, dmboerne@gvyc.com

CLEBURNE

3rd Saturday, jam begins at 2 p.m. and show at 5 p.m., provided by Paluxy River Bluegrass Assn., held at Chisholm Trail Museum, 101 Chisholm Trail, Cleburne, TX 76033, paluxyriverbluegrass@gmail.com

Clear Lake

Tuesdays 7 to 9 pm Luka's BBQ and Steakhouse 17052 SATURN LN, HOUSTON
Call (281) 286-866

COLDSPRINGS

Saturdays 9am till 2pm on the porch or courthouse lawn every week at Rosalie's cottage
you can call for information: Neda Sledge at (939-662-8323

CYPRESS

Every Monday, 6-8:30 PM, Good Shepherd United Methodist Church, 20155 Cypresswood Dr.
Tony and Nema: Email tonynema10@gmail.com, phone 281-910-4396

2nd Friday, Bluegrass Music Knight Out and Jam Weekley Community Center, 8440 Greenhouse
Road Jam starts at 4 pm. Show starts at 6:30 pm.

Contact Tony and Nema for more info, Phone: 281-910-4396, Email: tonynema10@gmail.com
Facebook: Cypress Bluegrass Rising Group, <https://www.facebook.com/BluegrassRising/>

Enloe, TX

3rd Saturday Bluegrass Jam, 2-6:30 PM. Sweet Enloe Opry, Lexie Street

FAYETTEVILLE

A little patience, please!

- **2nd Saturday (Jan.-Nov.),** Fayetteville Picking Park, Jam, 1-? PM, on the Courthouse Square, Slow Jam - 1 PM, Lou-Lou Barbour (979) 451-0067 or banjobooklady@yahoo.com

GARLAND, TX

- **Saturdays,** (April-Nov.) Garland Town Square Jams (held outside), 6 PM-?, 200 N. 5th St.

GLEN ROSE

- **3rd Saturday,** Bluegrass Stage Show, hosted by Paluxy River Bluegrass Assn./Oakdale Park, txartisan.com for details.

GRAPEVINE

- **1st Saturday,** Bluegrass at the Settlement, noon-4 PM, picking, show and shopping, 206 W. Hudgins, southwestbluegrassclub@dfw.org
- **2nd Saturday** Southwest Bluegrass Club Meeting, Show and Jam 11:00 AM to 3:00 PM at the First Baptist Church, 113 E. Texas St. www.southwestbluegrassclub.org

HOUSTON

- **2nd Saturday,** 7:30 PM Houston Folklore Society, Admission charged, *folk music*, West University Community Building, 6104 Auden. Phone 281-347-3235 houstonfolkmusic.org
- **3rd Saturday** North Harris County Dulcimer Society. see website. 2:00 PM, Advent Luthern Church, 5820 Pinemont Dr, www.nhcads.com
- **Wednesdays** Buffalo Grille Bluegrass Jam, 6-8PM, 4080 Bissonet St; All skill levels welcome

LLANO

- **3rd Saturday,** Open Bluegrass Jam, 1-4 PM, at the Fuel Coffee House, 106 E. Main.

PEARL

- **1st Saturday, (2nd Sat in Sept)** Pearl Bluegrass Jam & Stage Show, Jam all day/night, Stage show 12-10 PM, food and RV hookups available. Pearl Community Center, on FM 183, 7 mi South of Purmela, info@pearlbluegrass.com; www.pearlbluegrass.com

SAN ANTONIO

- **Every Monday,** "In-A-Jam" Bluegrass Jam Session, 2-4 PM, at The BBQ Station, 1610 N. E. Loop 410, (210) 824-9191 HerbKnowlson or Sheryl Sultenfuss
- **Every Tuesday,** "Jam Session, 6:30-8:30 PM, Everyone welcome, mostly country, some bluegrass, The BBQ Station, 1610 N. E. Loop 410, More info: Ssultenfuss@gmail.com, (210) 824-9191

SHULENBERG

- **1st & 3rd Tuesday,** Jam, 6:30 PM, at Schulenburg RV Park Community Center, 65 N. Kessler Ave., Laretta Baumgarten - (979) 743-4388, camp@schulenburgrvpark.com

SUGARLAND

- **Every Tuesday** 6:30 to 9:00 PM, 1st Presbyterian Church, 502 Eldridge Rd, Sugarland. Bluegrass and acoustic instruments only. Contact samgrice@windstream.net or 832-428-3165

Jams and Shows last updated August 2022

3/3

TOMBALL

- **4th Saturday**, Jam, 1-4 PM, Kleb Woods Nature Center, 20303 Draper Rd, Tony and Nema, Call 281-910-4396, email tonynema10@gmail.com

WEBSTER

- **3rd Saturday (Jan. - Nov.)**, Bay Area Bluegrass Jam & Free Bluegrass Show, Jam - 4:30 PM, Show - 6:30 PM, Webster Civic Center,, 311 Pennsylvania Ave., (281) 316-4108, (281) 332-1826

WOODVILLE

- **4th Saturday**, Triple Creek RV Park in Woodville, Where the bluegrass jam is indoors and there's food and fellowship galore. You will feel right at home with the fun folks and musicians. Triplecreekrv.com

Please remember to always email or call ahead to make sure they're meeting before you use precious gas.

In addition pay attention to *when the list was updated*. If you know of any changes please notify Greg English: genglish43@gmail.com
Checking all the jams is time-consuming, and not everyone calls or emails back, which is why it isn't updated constantly... It's also why this is the first update since many jams shut down from covid restrictions.



Jam at Buffalo Grille every Wednesday-details above

GOT KIDS?
GRANDKIDS?
Electrified pals?

Come by the
shop and see
our fine
electric
instruments
and amps, too.
Starter kits to
professional
grade.
Check us out!



116 North Loop

Houston, TX 77008

713-880-2188 www.fullersguitar.com

For all your Bluegrass Needs

Acoustic Guitars

Vintage Kay Basses

Mandolins

Banjos

Dobros

Accessories



Eastman
HANDCRAFTED
GUITARS & MANDOLINS

Epiphone

Fender

Gibson

GRETSCH

KRAMER

Squier
by Fender

Taylor
QUALITY GUITARS

Martin & Co.
EST. 1833

Rickenbacker



Advertise to 400+ people every issue!

ADVERTISING RATES

Business Cards

\$50 per year

\$5 per issue

Quarter Page

\$75 per year

\$10 per

issue

Half Page

\$150 per year

\$15 per issue

Full Page

\$300 per year

\$30 per issue

for information: genglish43@gmail.com

Anton "Tony" Ullrich

is celebrating 50 years (1972 - 2022) of teaching folks in the greater Houston area to play Bluegrass style banjo.

Your private banjo lessons begin with an introduction to BanjerTab's unique approach to creating syncopation (that 'ahead of the beat' bounce) that you hear in the recordings of the first generation greats, who had no other form of learning than creating their banjo style 'as they went.' Once you're familiar with BanjerTab, choose the area of playing you want to focus on: Scruggs style, full-chord back-up, mid-neck / high-neck picking, melodic style (fiddle tunes /back-up), or specific songs you have always wanted to play.

The expertise gained through 56 years of playing and 47 years of teaching is available to you now.

Choose videotape lessons or come for private lessons in Houston.

Call 713-785-6655 or fax 713-532-6655

World Music

3750 Cartwright Rd.
281-403-1615

- We teach ALL INSTRUMENTS, including voice
- DVD Video & CD Audio Recording
- Instrument Sales
- Repair & Rental



GIFT certificates available

worldmusicsugarland.com

NA FM 1082 Cartwright Hwy 6



anton@banjerproductions.com
www.5stringbanjer.com

Texas Air Services, Inc

281-337-7763

www.texasairservices.com



"A trusted partner in Aviation & Engineering Innovations"

SPACE CITY INSPECTIONS, LLC

Professional Real Estate Inspectors

www.spacecityinspections.com

Ed Fryday

ASHI, TPREIA, TAREI, ICC, InterNACHI, HAR
281-636-9419

Bluegrass Music Rising in NWHouston



**Bluegrass Music Knight Out
Show and Jam** 2nd Friday Each Mo.;

and Monday Night Jam: 6:30-9:00pm

* Location (for both): Weekley Community Center,
8440 Greenhouse Rd., Cypress, TX 77433

4th Saturday Jam @ Kleb Woods Nature Ctr, Tomball, TX

Contact: Tony 281-373-1777, 281-910-4396;

Website: www.bluegrassrising.net

Email: tonynema@earthlink.net; and Booking
of "Almost Heaven Bluegrass Band"

FULLER'S VINTAGE GUITAR

Playing Music From America's Roots

Brazos River Pickers

www.brazosriverpickers.com

Toe-Tapping Bluegrass and Good Old-Time Music
Guaranteed to liven up any event!

Rex Mann

Mandolin/Vocals

For Bookings - Bob Young (713)249-8115

Lonestar Bluegrass Band



Contact Chris Hirsch 281-491-1680

chirsch@windstream.net

www.lonestarbluegrassband.com

Sabine River Band

Available for your events



409-781-1201

sabinerverband.com/

The Pet Rooster Band

Bluegrass with a few variations



Available for Your Next Event

- Bluegrass festivals
- Private parties
- Family restaurants
- Church functions
- Monthly bluegrass shows



Jay • R. Lynn • Cathy • Doctor Phil

www.petroosterband.com • phone (979) 297.2709

ROGER L. EKLUND

Residential Construction/Remodeling

ROGER EKLUND

Owner

Estimates Available

Design & Construction

League City, Texas 77573

reflact@yahoo.com

40+ Years Experience

Mobile (281)543-2658

Southern Style

Southern Style Bluegrass Band: 281-488-2244

Liberty

CHIROPRACTIC

12325 Scarsdale Blvd, Ste A
Houston, TX 77089

281-484-9492

www.libertychiro.us

Rates & Reservations

sndpiper325@aol.com

Sand Piper RV Park

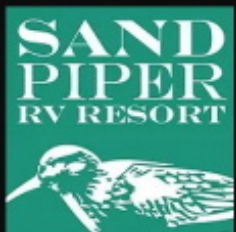
Seawall Blvd & Ferry Road

Galveston Island, Texas 77550

409-765-9431 or 409-765-9409

<http://sandpipervresort.com/>

The City of Webster



Mary E. Conn & Associates

MARY E. CONN & ASSOCIATES



The College
of Business
University of Houston
Clear Lake

MARY ELIZABETH CONN

(713) 385-4100

Licensed in Texas and California

mary@maryconn.com

4801 Lakeside Street, Suite 1000

Houston, Texas 77051

www.maryconn.com

SPACE CITY INSPECTIONS, LLC

Professional Real Estate Inspectors

www.spacecityinspections.com

Ed Fryday

ASHI, TPREIA, TAREI, ICC, InterNACHI, HAR

281-636-9419



HALLIE REEVES

strolling "gypsy" violinist

Balloon Deliveries Phone-A-Fiddle-Grams
Dinners, Weddings, Receptions, Etc.

Classical Pops Music

713-477-2730



MUSIC LESSONS

Violin, Viola, Piano & Fiddle

HALLIE REEVES

(713) 477-2730