

THE BABA BULLETIN

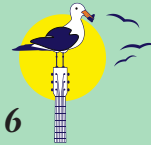
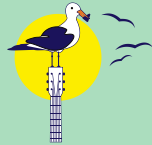
The Bay Area Bluegrass Association

5820 Misty Meadow, League City, TX 77573

December 2016

30 Years of Bluegrass

Volume 30, Issue 6



A BLUEGRASS Night Before Christmas

'Twas the night before Christmas
And all through the land
Every picker and grinner
Was joining a band.

BIG SANDY was tuning
His D-28
IN THE GRAVEL YARD so that
He wouldn't be late.

Then OLD JOE CLARK and
The RED HAired BOY sang,
And the "RED RIVER VALLEY"
In harmony rang.

The moon on the breast
Of the new-fallen snow
Showed a FOX ON THE RUN
Past MY CLINCH MOUNTAIN HOME.

The ice up on CRIPPLE CREEK
Slowed up his pace,
But he kept on his course
With AMAZING GRACE.

Then up on the roof
Such a racket began,
And right down the chimney
fell a fat, jolly man.

He was dressed all in red
from his head to his toe;
In his sack was a Bass,
In his hand was a bow.

He struck up a beat
And with nary a scuffle
Soon had the band playing
The CHEROKEE SHUFFLE.

A WHISKEY BEFORE BREAKFAST
Had made him quite merry,
And though he loved jamming,
Not long could he tarry.

The reindeer were restless
And pranced by the sleigh,
And the Bluegrassing Santa
Said "I'LL FLY AWAY."

But we heard him exclaim
'Ere he drove out of sight:
"Happy Christmas to all.....
And play BLUEGRASS all night!"

- Judy Sturgeon
Bay Area Bluegrass Association

BABA MEMBERS NEW YEAR'S EVE PARTY!

At Texas Air Services again
this year. Join us for
food, music and good
family fun, and we'll
'String' in the New Year
together!

See the flyer inside

R.S.V.P. to Rick Kirkland
crk5820@msn.com or
bayareabluegrass@aol.com



****Articles are opinions
of the writers alone and
do not imply agreement
on the part of the Board
of Directors or the
Members.****



MEMBER & FAMILY

MEMBER & GUEST

BABA Members New Years' Eve Party & Bluegrass Jam

Hey y'all! Aren't you glad that **your membership is up to date**? Party at Arvin's to **PICK** in the New Year with Friends, Fun and.... **FOOD!**

BABA will **PICK** up the tab for the soft drinks and main course. Bring a side dish or dessert to share!

Arvin says you can bring your RV and park in the lot.

RSVP!!

Rick
crk5820@msn.com

or

bayareabluegrass@aol.com

bring it to: Texas Air Services Complex
main address: 4418 Illinois Street
Dickinson, TX
party: Around the corner at
Illinois & 45th Street

7:00 pm until you can't !

JOIN BABA: WWW.BAYAREABLUEGRASS.ORG

Christmas NewsLetter from the TEXAS BLUEGRASS ASSOCIATION



2016

HAPPY HOLIDAYS

And ... *Merry Christmas* to All!

We hope this letter finds all our friends and *Bluegrass family* doing well, feeling festive and ready for a long winters' nap!
Wait, we can't be takin' a NAP, what was I thinkin'?

We are, however, glad that we have a few months before our next Festival and have some time to rest up! Right? Right!

First, we want to **THANK** each and every one of **YOU** for all you do to help us each year during the Festivals. Every thing you do, no matter how large or small, keeps us keeping on.

We always feel like we don't **THANK YOU** enough for all you do each year, -- just know we really mean it, sincerely!

All the *2017 Festivals* are booked and I am working on our flyers. However, here's a little sneak preview **just for you!**

Memorial Day: Robertson County Line, The Baker Family, Chris Henry and Hardcore Grass, Edgar Laudermilk, Bama BlueGrace, Shallow Creek, Catahoula Drive, The Purple Hulls, and The Marksmen.

Labor Day: Trinity River, Kristi Cox, Buffalo Nickel, Southern Style, The Baker Family, Gary Waldrep, Remington Ryde, Mark Phillips and Ill'd Generation, The Marksmen, Lone Star Drive, Karl Shiflett and his Big Country Show, and THE MALPASS BROTHERS! (We may have to skip supper break – we have so many good groups on Fri. & Sat.)

Coushatta/Bellville: Catahoula Drive, Kristi Cox, Edgar Laudermilk, Vickie Vaughan Band, Little Roy and Lizzie, Blue Mafia, Williamson Branch, His Harmony and Jeff Robertson and Friends.

Please recruit any of your friends that might want to come for free, and help out, and join in the fun.

We are always waiting with open arms for new volunteers!

Please let me know if you will not be able to attend and help out in 2017.

*With Christmas Hugs and New Years' kisses, **Colee & David***

936-697-5944

GOT KIDS?
GRANDKIDS?
Electrified pals?
Come by the shop and see our **fine electric instruments and amps, too.**

Starter kits to professional grade. Check us out!

FULLER'S VINTAGE GUITAR

116 North Loop (610 @ Yale)
Houston, TX 77008
713-880-2188 www.fullersguitar.com

FOR ALL YOUR BLUEGRASS NEEDS

Acoustic Guitars
Vintage Kay Basses
Mandolins
Banjos
Dobros
Accessories



WHAT WOULD WE DO WITHOUT OUR SPONSORS? **NOTHING!** PLEASE SUBSIDIZE THEM WHEN YOU ARE ABLE, AND BE SURE TO THANK THEM FOR SUPPORTING THE BLUEGRASS MUSIC THAT YOU LOVE!

Texas Air Services, Inc

281-337-7763
www.texasairservices.com



"A trusted partner in Aviation & Engineering Innovations"



SPACE CITY INSPECTIONS, LLC
Professional Real Estate Inspectors
www.spacecityinspections.com
Ed Fryday
ASHI, TPREIA, TAREI, ICC, InterNACHI, HAR
281-636-9419

ROGER L. EKLUND
Residential Construction/Remodeling
ROGER EKLUND
Owner
Estimates Available
Design & Construction
League City, Texas 77373
refair@yashon.com
40+ Years Experience
Mobile (281)543-2658

COMMERCIAL AND RESIDENTIAL SERVICE
WECO
281-488-2244
Rick Kirkland 5820 Misty Meadow
crk5820@msn.com League City, TX 77573

Bluegrass Music Rising in NW Houston
Bluegrass Music Knight Out Show and Jam 2nd Friday Each Mo.
and Monday Night Jam: 6-9pm
*Location for both: Weekley Community Center, 8440 Greenhouse Rd., Cypress, TX 77433
2nd Saturday Jam @ Kleb Woods Nature Ctr, Tomball, TX
Contact: Tony 281-373-1777, 281-910-4396
Website: www.bluegrassrising.net
Email: tonymema@earthlink.net; and Booking of "Almost Heaven Bluegrass Band"

Lonestar Bluegrass Band
Contact Chris Hirsch 281-491-1680
chirsch@windstream.net
www.lonestarbluegrassband.com

Sabine River Band
Available for your events
409-781-1201 sabineriverband.com

Mary E. Conn & Associates
MARY E. CONN & ASSOCIATES
The College of Professional Services
Mary Elizabeth Conn (913) 869-4180
Licensed in Kansas and Missouri

The Pet Rooster Band
Diagnose with a few Variations
Available for Your Next Event:
- Bluegrass Banquets
- Private parties
- Family reunions
- Church functions
- Monthly bluegrass shows
Ang • R. Lynn • Cathy • Doctor Phil
www.petroosterband.com • phone (979) 297.2708

SAND PIPER RV RESORT
Rates & Reservations
sndpiper325@aol.com
Sand Piper RV Park
Seawall Blvd & Ferry Road
Galveston Island, Texas 77550
409-765-9431 or 409-765-9409
http://sandpiperrvresort.com/

LOTS OF ROOM FOR MORE SPONSORS, FOLKS!

This goes out to over 300 musicians, music fans, and bluegrass music associations every month. As a sponsor, your ad also runs on the screen at the monthly shows in front of another 300 people. If the economy is great and you don't need to advertise, you can always support the arts AND claim a tax deduction - we're a 501(c)3 organization. **Help us, help you!**

Contact Rick Kirkland, crk5820@msn.com or call him at 281-488-2244 for more information.



Want your info here? Not to worry, we can add a whole PAGE and just keep putting in more sponsors!

SWAP 'N' SHOP !



Kerry Jones has a new custom Deering banjo for sale. The strings are more widely spaced with an arched (radius) neck.

This beauty is made from deluxe mahogany, has a Kavanjo pickup, and is ready for the stage. The only thing it needs is for Kerry to have time to play it, instead of selling it! This is a really great banjo, and he is offering it for 20% off the original price of \$5,000. Email is tubabanjoguy@hotmail.com and cell is 832-545-7261

The Kavanjo Banjo Pickup System is a magnetic humbucking pickup and jack suspended from a customized mylar head. This is the newest and we believe the most effective way to amplify ANY banjo, while maintaining the instruments authentic characteristics....from the

About BABA

The Bay Area Bluegrass Association (BABA) was organized in 1986 and incorporated in 1987 under the Texas Non-Profit Corporation Act. The primary purpose of BABA is to preserve, encourage, and promote Bluegrass and Bluegrass gospel music as an American art form. BABA promotes Bluegrass through being active in community events, fund raisers, festivals, and monthly shows. BABA is a 501(c)(3) tax deductible organization; see any Director for information.

The monthly show is free to the public and features Bluegrass from the local and national scene. The stage show begins at 6:00 PM, but pickers are welcome to bring their instruments and come earlier to jam. Tasty, inexpensive food is available at the show, and there are raffles, door prizes, and Bluegrass merchandise for sale. This is a 'no alcohol' event, but there's plenty of music and great family fun!

Proceeds from donations, sponsors, memberships, sales, and raffles are used to keep the doors open and the regular shows free to the public. They also maintain and replace sound equipment, storage, security, and expense of keeping the music playing. We thank you for your attendance, your generosity, and your love of the music.



Professional Real Estate Inspectors
www.spacecityinspections.com

Ed Fryday

ASHI, TPREIA, TAREI, ICC, InterNACHI, HAR
281-636-9419



Colee and David Littlefield
Festival Management/Promoters

Salmon Lake Park Coushatta Recreational Ranch

26717 Bayou Tesch Dr. www.TXBluegrassMusic.com c. 936-697-5949
Magnolia, TX 77354 coleebiller@aol.com c. 281-259-5453

CLASS ACTS

5-String Banjo Lessons
Beginner - Advanced

Guitar Lessons
Beginner - Intermediate

Recording Studio

Does your child want to learn to play? Do YOU? Get started now, or improve your current skills.

You'll be glad you did!

KERRY JONES 832-545-7261

Do you have musical instruments or gear for sale or trade? Send the info, and a couple of photos along with your contact information to bayareabluegrass2@aol.com

List your band in the BABA talent index. At least one band member must be a BABA member. Your annual \$35 membership includes a subscription to the BABA Bulletin, and supports the BABA and the music! Give us a hand; we'll help find you some fans.

ADD-ONS TO THE BLUEGRASS JAMS!

Until we get time to reformat the whole list, this is the overflow page for some 'not-too-far-from-Houston' jams. Thanks to Tony & Nema Redding for the info!

At the Weekley Community Center, 8440 Greenhouse Road (North @ Longenbaugh Road), Cypress, TX 77433, please make note of the following:

Every Monday, 6:30 to 9:00 PM, Rooms 403 and 404

Second Friday Show and Jam, Show is 6:15 to 8:30 PM and the Jam is 4:00 to 8:45 PM in the auditorium.

Contact: tonynema@earthlink.net or phone 281-373-1777 or 281-910-4396

SUPPORTING BANDS of the BAY AREA BLUEGRASS ASSOCIATION

ALMOST HEAVEN: Tony Redding, 281-373-1777, tonynema@earthlink.net
www.bluegrassrising.net/#!about-our-band/clmys

THE BLUEGRASS SOLUTION: Mike Fuller, 281-989-8719, mike@fullersguitar.com
www.thebluegrasssolution.com

THE BRAZOS RIVER PICKERS: Bob Young, 713-249-8115, bob.young@spectracf.com
www.brazosriverpickers.com

BUFFALO NICKEL BLUEGRASS BAND: Laney Sims, 281-836-2203,
laney sims@windstream.net www.thebuffalonickebluegrassband.com

CYPRESS CREEK: Dave Culbertson, 832-544-4373, dculbertson@consolidated.net
www.cypresscreekband.com

THE GREER FAMILY BAND (Brenham): Lawrence Greer, 979-454-1120,
lgreer@txsun.net www.greerfamilyband.com

THE LAUGHING LIZARDS STRING BAND: Steve Bing, 225-405-9707,
stevebingmusic@aol.com www.laughinglizardsband.com

LONESTAR BLUEGRASS BAND: Chris Hirsch, 281-788-3840, cshirsch@windstream.net
www.lonestarbluegrassband.com

PET ROOSTER: Lynn Holbrook, 832-584-5575, info@petroosterband.com
www.petroosterband.com

SABINE RIVER BEND BAND: Earl Cochran, earlcochranjr@aol.com
www.sabineriverbend.com

SALTGRASS: Jimmy Fischer, 979-265-4757, jwfischer@comcast.net
www.thesaltgrassband.com

SOUTHERN STYLE: Rick Kirkland, 281-488-2244, crk5820@msn.com
www.southernstylebluegrassband.com

SOWELL FAMILY PICKERS: Cindy Sowell, 979-251-2605
www.thesowellfamilypickers.com

SKIDAWAY RIVER: Doug Burtchaell, 281-380-0157 dburtchaell@comcast.net

TEXAS OLDE TYME BLUEGRASS BAND:
texas.oldetyme.bluegrass.band@gmail.com www.totbgb.com

THE REMNANTS BAND: James Collins, 281-216-2749

WHITE DOVE: Glen Beauboeuf, 832-289-7895 glen_angieb@yahoo.com
Facebook - White Dove

Anton "Tony" Ullrich

is celebrating 44 years (1972 - 2016) of teaching folks in the greater Houston area to play Bluegrass style banjo.

Your private banjo lessons begin with an introduction to BanjerTab's unique approach to creating syncopation (that 'ahead of the beat' bounce) that you hear in the recordings of the first generation greats, who had no other form of learning than creating their banjo style 'as they went.'

Once you're familiar with BanjerTab, choose the area of playing you want to focus on: Scruggs style, full-chord back-up, mid-neck / high-neck picking, melodic style (fiddle tunes /back-up), or specific songs you have always wanted to play.

The expertise gained through 52 years of playing and 43 years of teaching is available to you now. Choose videotape lessons or come for private lessons in Houston.

Call 713-785-6655 or fax 713-532-6655



Authorized Deering Banjo Dealer
Home of the Texas Banjo

anton@banjerproductions.com
www.5stringbanjer.com

World Music

3750 Cartwright Rd.
281-403-1615

- 🌐 We teach ALL INSTRUMENTS, including voice
- 🌐 DVD Video & CD Audio Recording
- 🌐 Instrument Sales
- 🌐 Repair & Rental



GIFT certificates available

YOUR AD HERE:



409-945-7446 or sales@tntsigns.net
2212 Palmer Hwy, Texas City, TX 77590

A BIG BLUEGRASS THANKS!

to our members who help keep the music playing every month, and an extra shout out to those who have joined as Gold Club, Lifetime, Endowment and Foundation levels. We couldn't do this without all of you!

Members' names are in alphabetical order

Gold Club Members

Mike & Pat Conwell, Gerry & Kim Herman, Lynn Holbrook, Rick & Shirley Kirkland, Linell McCallian, Ronald Moore, Laney & Shannon Sims

Membership in the Gold Club is payable annually. We thank you for your "extra" support.

BABA Lifetime Members: Brad & Dee Alford, Dave Aldrich, Scott & Diana Armstrong, Doris Arnett, Chris Bagley, Hubert & Shirley Brasseaux, Cara Cooke, Eric & Kim Corgey, Lyman & Annis Cox, Paul & Dana Cutts, Robert & Debi Duke, Bill & Joni Dusenbury, Harry Edwards, Ruth Evans, George Franklin, Jason & Alicia Fricke, Ed & Becky Fryday, Paul & Lillie Futch, John & Jean Gardner, Bill & Geri Gatlin, J.B. & Nancy Graham, Jim & Sharon Greenlee, Doris Grigg, Chuck & Mary Pat Gunn, Robert & Elizabeth Hasserd, Tom Harrison, Ron & Anne Hayden, Arvin & Sheryl Holland, Sammy & Ottie Holloway, Jan Johnston, Stan Jones, Paul & Linda Kerr, David & Colee Littlefield, Ken & Wanda MacDonnell, Phil & Cecile Mathers, Paul & Madeline McKneely, Faber & Sandy McMullen, Patrick Milligan, Barbara Monroe, Charles & Ellen Orsburn, Mike Pettit, Bill & Glenna Pierpont, Norman Ponder, Billy Potts, Tony & Nema Redding, Karl Reid, Jack (R.I.P.) & Carol Ritter, Tom & Sandy Roberts, Jonathan & Kristine Samuell, Billy & Terry Schmidt, Jerry & Monica Scribner, Gordon Spaulding, O.K. & Sharon Stafford, Bob & Marilyn Taylor, James & Laura Taylor, Scott Teven, Charlene Threlkeld, David Towery, Helen Vinson, Viola Wakefield, Larry Wenner, Paul Williams.

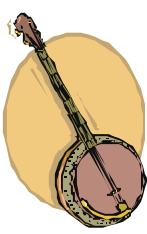
Endowment Gift Members:

Phil & Fern Deans, Pat Lomas, Lisa Maranto



Foundation Members:

Chris Bagley, Mike Fuller, Ed Fryday



PICK YOUR NEWS

Hey y'all, *The Time Jumpers*, featuring **Vince Gill, Kenny Sears, "Ranger Doug" Green, and Paul Franklin** will be at the Grand Opera House in Galveston on Saturday, February 11 at 8:00 PM. Tickets range from 'pricey' to 'nicey' depending on where you want to sit, but there are no bad seats at The Grand. I know, I've researched them all over the years! You can buy tickets online at www.thegrand.com, click 'buy tickets' and fast forward to page two.....or you can call the box office at 1-800-821-1894. See you there!

There's a great article online about the history of Bluegrass Music in Texas. "The story of bluegrass in Texas is at once a mirror of the development of this genre at the national level plus minor influences from Texas music, particularly western swing and contest fiddling. It is generally agreed that the bluegrass sound came into being when the three-finger banjo of Earl Scruggs was added to Bill Monroe's Bluegrass Boys band in Nashville in 1946." See the website for the rest of this story from the Texas State Historical Association!
<https://tshaonline.org/handbook/online/articles/xb02>

November 11 is the release date for the latest project from **Rhonda Vincent & The Rage**, *All The Rage*, available in both CD and DVD formats. Both contain 14 songs recorded live during late May of 2015 at the Bethel Performing Arts Center, located near Bethel University campus in northwestern Tennessee. <http://www.rhondavincents.com/>



MEMBERSHIP LEVELS

[JOIN: at the show, or online](#)

Individual Membership: \$35.00 annually

You'll become a member of the BABA family and support the free monthly shows & jams. You'll receive the BABA Bulletin Newsletter monthly, admission to workshops at the monthly shows, admission to Bluegrass in the Park for BABA members & guest, updates about Bluegrass events in the area, discounts on some bluegrass shows in the area – as well as the satisfaction of supporting BABA and Bluegrass Music in Texas.

Family Membership: \$50.00 annually

You'll become a member of the BABA family with all the benefits of the individual membership for you and your immediate family. You'll support the free monthly shows & jams, receive the BABA Bulletin Newsletter monthly, get admission to workshops at the monthly shows and admission to Bluegrass in the Park for BABA members & guest, get updates about Bluegrass events in the area, discounts on some bluegrass shows in the area - and the satisfaction of supporting BABA and Bluegrass Music in Texas.

Gold Club Membership Individual: \$100.00 annually

Get all the benefits of the individual membership, a Gold Club Membership Name Badge, & a BABA shirt for giving that extra support to the BABA family. You'll become a member of the BABA family and support the free monthly shows & jams, receive the BABA Bulletin Newsletter monthly, get admission to workshops at the monthly shows, admission to Bluegrass in the Park for BABA members & guest, updates about Bluegrass events in the area, discounts on some bluegrass shows in the area - and the satisfaction of supporting BABA a little extra.

Lifetime Member Individual: \$350.00

Get all the benefits of BABA membership for life! You'll become a member of the BABA family and support the free monthly shows & jams, and receive the BABA Bulletin Newsletter monthly. You'll get admission to workshops at the monthly shows, admission to Bluegrass in the Park for BABA members & guest, updates about Bluegrass events in the area, discounts on some bluegrass shows in the area - and the satisfaction of supporting BABA for life.

Lifetime Member Family: \$500.00

Get all the benefits of BABA membership for life for you and your immediate family! You'll become a member of the BABA family and support the free monthly shows & jams, and receive the BABA Bulletin Newsletter monthly. You'll get admission to workshops at the monthly shows, admission to Bluegrass in the Park for BABA members & guest, updates about Bluegrass events in the area, discounts on some bluegrass shows in the area - and the satisfaction of supporting BABA for life.

Lifetime Gold Club Membership Individual: \$1000.00

Get all the benefits of the individual membership, A Gold Club Membership Name Badge, A BABA shirt, and knowing that you are giving that extra support to the BABA family. You'll become a member of the BABA family and support the free monthly shows & jams. You'll receive the BABA Bulletin Newsletter monthly, admission to workshops at the monthly shows, admission to Bluegrass in the park for BABA members & guest, updates about Bluegrass events in the area, discounts on some bluegrass shows in the area -and the satisfaction of supporting BABA 'above and beyond'.

Texas Bluegrass Jams & Shows

Combined list from Bay Area Bluegrass Association and Central Texas Bluegrass Association: If you're in Southeast to Central Texas, bring your instruments because we're going to find you a place to pick and jam.

PLEASE notify us at bayareabluegrass2@aol.com if you find any errors, or have a jam that you'd like changed, added or deleted. We list by day of the week, then by town/city.

Mondays

Bluntzer: 3rd Monday, 2-6 PM, South Texas Bluegrass Gospel Jam, G&H BBQ, 5491 Hwy 624. phone 361-387-4552
Email stx.bluegrass@gmail.com,

Cypress: Every Monday 6:30-9:00 PM, Weekly Community Center, 8440 Greenhouse Rd (North @ Longenbaugh) Rooms 403 & 404 Email tonynema@earthlink.net, phone 281-373-1777

San Antonio: 2nd & 4th Mondays, 7 PM, "Monday-in-a-Jam" at Grady's BBQ, 327 E. Kakoma Dr., 78216. Phone Peyton Starr 210-870-4321 or Sheryl Sultenfuss (no phone listed)

Tuesdays

Llano: 1st & 3rd Tuesday, 7 PM, Beginner/Intermediate, 1st Presbyterian Church. Phone Jeff White 325-248-4114

Medina: 2nd Tuesday, All Gospel Jam, 6 PM, 1st Baptist Church. Phone Linda Barton, 830-589-2486

Nassau Bay: 1st Tuesday, 7-@9 PM at Fuddruckers, 2040 NASA Pkwy, 281-933-1620

Shulenburg: 1st & 3rd Tuesday, 6:30-9:30, Shulenburg RV Park Clubhouse. Phone Loretta Baumgarten 979-743-4388 or
Email camp@ShulenburgRVPark.com

Sugarland: 6:30 to 9:00 PM, 1st Presbyterian Church, 502 Eldridge Rd, Sugarland. Bluegrass and acoustic instruments only. Contact samgrice@windstream.net or 832-428-3165

Wednesdays

Austin: 1st Wednesday, 7-10 PM, Musician's Woodshed, 3698 RR 620 South, Ste. 107, 78738, themusicianswoodshed.com

Houston: each Wednesday, 6-9 PM, at Hickory Hollow, 100 Heights Blvd, Houston (just south of I 10 on Heights Blvd)

Houston: 4th Wednesday 7PM to 9PM, Old Time Music jam, Pizza Inn, 1801 Mangum Rd, @W 18th & Mangum Rd just outside the NW Loop. Contact Steve Bing, 225-405-9707

Thursdays

Austin: 1st & 3rd Thursdays, 7 PM, Bruce Manbridge's home. **Contact Steve Mangold for all Austin Jam info, 512-345-6155**

Cypress: Every 3rd & 5th Thursday, 12:30 - 3PM, Weekly Community Center, 8440 Greenhouse Rd, Cypress. Email: tonynema@earthlink.net or phone 281-373-1777

Georgetown: Every Thursday, 5:30-7:30 PM, Duke's BBQ. Email sigi@sigi.us, phone 512-869-8076

Groves: Every Thursday, 7 PM, Allie Morvent's House, phone 409-962-5236

Manchaca: Every Thursday, 6:30-9 PM, Manchaca Railroad BBQ, FM 1626. Phone Dave 512-680-4433

Fridays

Bandera: 4th Friday, 6:30 PM, Silver Sage Corral, east of Bandera. For info, phone 830-796-4969

Carthage: 1st Friday, 6:30 PM, Town Square. For info, phone 903-678-3857

Cypress: 2nd Friday, show 6:30-9:00 PM, Jam 4 - 8:45 PM, Ausitorium. Weekly Community Center, 8440 Greenhouse Rd, (North @ Longenbaugh) Rooms 403 & 404 Email tonynema@earthlink.net, phone 281-373-1777 or check the website www.bluegrassrising.net

Hondo: 1st Friday, begins 11 AM, Hondo Hootenany. Hondo Community Center, 1014 18th St. Phone 830-426-2831

Utopia: 3rd Friday, 7 PM, Senior Citizen's Center. Phone Skip Doerr 830-966-6362

Victoria: 3rd Friday, Slow Jam 5-7 PM, regular jam 7-10 PM, American Legion Post #166, 1402 E. Santa Rosa. Free Admission. Email crossroadsbluegrass@yahoo.com or phone Stan Kendrick 361-935-4413 or Gary Moses 361-550-5466

Saturdays

Alvin: Every Saturday, Texas Opry, no time given, 1720 Sealy, Admission is charged. Phone 281-432-2942

Austin: 2nd & 4th Saturdays, 3 to 6 PM, all levels, CTBA sponsored. 3801 Berkman Dr., 78723.

Beaumont: 4th Saturday, no time listed, Rosedale Baptist Church, 7110 Concord. S.E. Texas Dulcimer Friends. Phone 409-866-0848

Bellville: 4th Saturday, 4 PM jam & 6 PM show Jan through Sept, Coushatte RV Ranch, Email colebillier@aol.com, phone 936-697-5949, website www.TXBluegrassMusic.com

Carrollton: Every Saturday March - Nov, 7:30 PM - 1 AM, between Main & State Sts. @ 6th St. Phone Jim Miller 972-279-3197 or website www.meetup.com/bluegrass-142



Here's the rest of the jam and show schedule! 'pick' your favorite.....

Saturdays continued

Deer Park: 2nd Saturday, 11 AM-3 PM, Troy's Music Shop, 4005 Center St. No contact listed.

Fayetteville: 2nd Saturday, 6 PM April – Nov, Courthouse Square. Email info@texaspickinpark.com or website www.texaspickinpark.com

Field Creek: 1st Saturday, 6 PM, Field Creek Music. Field Creek is between Llano and Brady on Hwy 71. Phone Bill Tuckness 325-247-3223

Glen Rose: 3rd Saturday, no time listed, Oakdale Park, Paluxy River Bluegrass Assoc., free stage show, camping encouraged. Phone John Scott 817-525-0558

Harwood: 3rd Saturday, 2 -9 PM, Jam & Stage Show. 9 mi. E. of Luling, Hwy 90. Phone Tony Conyers 512-601-1510 or 512-940-3731

Henderson: 1st Saturday, 6 PM, Odd Fellows Hall. Phone 903-889-2783 or 903-566-6650

Houston: 2nd Saturday, 7:30 PM, Admission charged and not always bluegrass, Houston Folklore Society, West University Community Building, 6104 Auden. Phone 281-347-3235

3rd Saturday, 3-6 PM, Woodland Christian Church, 607 Rogers, North Harris County Dulcimer Society. No phone listed.

Huntington: Nothing going on any more. Find a new jam? email the editor at bayareabluegrass2@aol.com

League City: 3rd Saturday, 5-11 PM jam, 6-9 PM show, 400 W. Walker St @ the Civic Center, Bay Area Bluegrass Assoc. Phone 281-488-2244

Liberty Hill: 4th Saturday, 1-6 PM, Hwy 29 West. Phone Paula 512-778-5410

Llano: 1st Saturday, 6 PM, Field Creek Music. Field Creek is between Llano and Brady on Hwy 71. Phone Bill Tuckness 325-247-3223

4th Saturday Jan – Oct, 5:30 – 10:30 PM, Bluegrass in the Hill Country Jam, The Badu House.

Email info@bluegrassinthehillcountry.org

Magnolia: 1st Saturday, Jam @ 4 PM, stage show 6-9 PM featuring 3-4 local bands. Texas Olde Tyme 1st Saturday Bluegrass Show & Jam, West Montgomery County Community Development Center, 31355 Friendship Drive, Magnolia TX 77355-2603. Contact Bobby Stem 281-744-7652 Website: www.totbgb.com

Marshall: 3rd Saturday, 7 PM Show, Lions Community Center, 1201 Louisiana St. Phone 903-935-7023

Minden: 3rd Saturday, 5:30 PM, Community Center. Phone 903-657-3320

Montgomery: 1st Saturday, The Garrett House. May be cancellations due to weather/scheduling; Contact Lonnie Clover at lrclover@msn.com before travelling. Jam starts @ 10 AM until 2 PM or so.

Needville: 1st Saturday, 6 PM-8 PM concert. Brazos River Pickers perform free at Brazos Bend State Park in the amphitheater. Concert is free but usual State Park Entry fees apply. Phone 281-344-0601 or website www.brazosriverpickers.com

Odessa: 2nd Saturday, Noon to 6 PM, Jam and potluck dinner for pickers and for gridders (guests welcome): Acoustic only with exception for bass; Music is Bluegrass, Old Time Country, Gospel and 'other'. No smoking or alcohol. 4400 Andrews Highway @ Jesus Connection Church, Odessa Contact Pete & Claudette Stull, ph: 432-362-6944, email: wb7amp@cableone.net

Pearl: 1st Saturday, 1 PM, Pearl Bluegrass Jam & Show. Old School House on FM 183 (not US 183). 7 mi. South of Purnela. RV hookups available. Phone Ronald Medart 254-865-6013 or website www.pearlbluegrass.com

Round Rock: 3rd Saturday, 2-5 PM, Danny Ray's Music, 12 Chisholm Trail. Phone 512-671-8663 or website <http://dannyraysmusic.com>

Sacul: 4th Saturday, 6:30 PM, Opry House, Hwy 204 (25 mi. SE of Jacksonville). Phone 903-586-8484 or 409-326-4544

Sulphur Springs: 3rd Saturday, October through March. No time listed. 400 Como St. Phone 903-885-4078 or 903-885-7063

Tomball: 4th Saturday, noon - 4PM, Kleb Woods Nature Center, 20303 Draper Rd (@ Muschke Rd) Tomball 77377 Email tonynema@earthlink.net or phone 281-373-1777 or 281-910-4396.

Walker, LOUISIANA: in case you sneak across the border. 4th Saturday, no time listed, Old South Jamboree, U.S. Hwy 190. Phone 504-664-3630

Wrightright: 4th Saturday, 7 PM, Opry House. Phone 903-364-2539

SEE: the overflow jam info on page 6 at the bottom!

Sundays

Austin: every Sunday, 2 PM, Hill's Café, 4700 South Congress Avenue, Austin, Texas 78745 ***Site Change!

Corpus Christi: 2nd Sunday, 2 PM, Heritage Park. South Texas Bluegrass Association, Phone Bill Davis 361-387-4552

Grapevine: 3rd Sunday, noon to 6 PM, Holy Trinity School, 3750 William D. Tate Ave. Phone 214-542-4402

PLEASE notify us of any corrections, deletions or additions at bayareabluegrass2@aol.com so we can keep the information current and correct. Always call before traveling, just in case!



PRESIDENT

Rick Kirkland

VICE-PRESIDENT

Laney Sims

TREASURER

Chris Bagley

SECRETARY

Judy Sturgeon

DIRECTORS

Phil Deans

Travis Posey

Arvin Holland

Lynn Holbrook

Roger Eklund

Don Meade

WEBMASTER

Travis Posey

tposey123@yahoo.com

EDITOR

bayareabluegrass2@aol.com

BABA INFO

281-488-2244

TO ALL FUDDRUCKER'S JAMMERS:

If you like the Fudd's jams but haven't been getting your monthly email reminder, shoot us an email request at: bayareabluegrass2@aol.com. If you'd like to be added to the list, just let us know!

Join us at Fuddrucker's, NASA Parkway, on the FIRST TUESDAY of every month for dinner and jamming. Turn in a BABA 'coupon' and we will receive a percentage of your food and drink purchase price as a donation from Fudd's. Great food, great friends, great bluegrass....how good can it get?! See Rick Kirkland for a coupon at the Jam.

BLUEGRASS RADIO WAVES & INTERNET SITES

KNES - FM 99.1 SUN 2-5 PM Fairfield, Carl Conkling

KEOS - FM 89.1 TUES 7-9 PM College Station, John Roths

KPFT - FM 90.1 SUN 4-6 PM Houston, Chris Hirsch

KVLU - FM 91.3 SAT 7-9 PM Beaumont

KOOP - FM 91.7 SUN 10 AM-NOON Austin, Sharon Sandormirsky/
Ted Branson/ Rod Moog

KKUS - FM104.1 9-10 AM Tyler, Dave Rousseau

KSHN - FM 99.9 SAT 8:30-10:30 PM Liberty, Roy Bennett

KSYM - FM 90.1 SUN NOON-2 PM San Antonio, Hank Harrison

KJIC - FM 90.5 SAT & SUN 6 AM-6 PM Houston, Believers Bluegrass

KAMU - FM 90.9 SAT 7-8 PM College Station, Dave Higgs (Nashville)

www.bayareabluegrass.org <http://www.pick-n-bow.com>

www.bluegrassdog.com

www.bluegrassheritageradio.com

www.bluegrassmusicjams.com/jam-texas.html

www.centraltexasbluegrass.org

www.cybergrass.com

<http://ibma.org>

www.southwestbluegrassclub.org

www.spbgma.com

www.TXBluegrassMusic.com

www.westtexasbluegrasstraditionalmusicassociation.com



The BABA Bulletin would like feedback and Bluegrass articles from our readers. Tidbits or articles can be: an amusing quote; reviews of festivals or music conventions; behind-the-scenes reports of bands; technical; RV and campground reviews; anything that you feel would be of interest to Bluegrass enthusiasts. Articles can span more than one issue, and full credit will be given. Original, uncopyrighted work only, please and thank you!

When do you stop believing in Santa Claus? When you start getting clothes for Christmas.

What does a reindeer do when he has an upset stomach? He takes an elk-a-seltzer.

What would you get if you ate the Christmas decorations? Tinselitis.

What do you call people who are afraid of Santa Claus? Claustrophobic.

What kind of motorcycle would Santa ride? A Holly Davidson

What did the Gingerbread Man put on his bed? A cookie sheet.

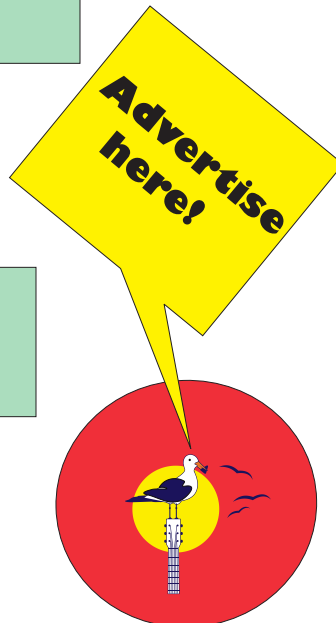
Which reindeer was known for his bad manners? Rude-olph.

What language does Santa Claus speak? North Polish.

Why does Santa have three gardens? So he can ho, ho, ho.

What do you call an ELF who sings? A Wrapper.

Did Rudolph go to school? No, he was elf taught.



<http://ibma.org/membership>

Support your local bluegrass music association. Memberships for adults start at \$40 dollars and the professional single membership is \$75.

ADVERTISING RATES

Business Cards

\$50 per year

\$5 per issue

Quarter Page

\$75 per year

\$10 per issue

Half Page

\$150 per year

\$15 per issue

Full Page

\$300 per year

\$30 per issue

email for information:

bayareabluegrass2@aol.com



SUPPORT BLUEGRASS MUSIC

<http://www.bayareabluegrass.org/membership.html>

<https://ibma.org/membership>

<http://www.spbgma.com/membership.html>

