



Bay Area Bluegrass Association



Bay Area Bluegrass Association



Bay Area Bluegrass Association



Bay Area Bluegrass Association

# THE BABA BULLETIN

The Bay Area Bluegrass Association

5820 Misty Meadow, League City, TX 77573

September 2017

31 Years of Bluegrass

Volume 31, Issue 3



## PRESIDENT'S MESSAGE

We've all lived through an experience I wouldn't wish on anyone. Some of our bluegrass family lost everything – home, clothes, cars - and will be recovering for many months or years. Our hopes and prayers are with them and with our entire part of the state.

Maybe we can bring a smile to some faces for just a little while with some great bluegrass music. See page 2 for the band lineup this month, and thanks to the bands last month. It does my heart good to see *Pickle Pie*. These are the young champions we have all watched grow up to be more than just great musicians but great people too. Thanks to *Southern Style* and *Out of the Blue*. It's always good to see them.

I'm working on a few exciting things for the coming months. We have instructors lined up workshops for guitar, banjo, dobro, fiddle, and bass. We're working on scheduling and will post them as soon as it's all settled. We're also working on a fun weekend fundraiser and membership drive for spring. I've already confirmed several of our favorite bands. Details to come.

Don't forget the November show with The Purple Hulls. You don't want to miss that.

I want to thank you for your support. Without you and your support there wouldn't be a BABA Show and Jam every month. Your membership dues and donations are what make it all happen, and we need your continued support to keep BABA strong. Thanks to all the volunteers. When you see a BABA volunteer tell them thanks for all the hard work it takes to bring these shows to you every month. They are all unpaid volunteers that do this out of love for the music and to bring a little joy to our lives.

Pick on.

Rick

**WHAT? B.A.B.A. is  
31 years old??**

## INSIDE:

Upcoming Shows  
Supporting Bands  
Membership  
Pick Your News  
Stringing You Along  
Special Events  
Bluegrass Venues  
Monthly Jams  
Festival Flyers  
Swap 'n' Shop  
Bluegrass Radio  
Thinkin' & Grinnin'  
More cool stuff  
Advertise here!!



**\*\*Articles are opinions  
of the writers alone and  
do not imply agreement  
on the part of the Board  
of Directors or the  
Members.\*\***



Bay Area Bluegrass Association



Bay Area Bluegrass Association



Bay Area Bluegrass Association



Bay Area Bluegrass Association



Bay Area Bluegrass Association



Bay Area Bluegrass Association



Bay Area Bluegrass Association



Bay Area Bluegrass Association



Bay Area Bluegrass Association



Bay Area Bluegrass Association



Bay Area Bluegrass Association



Bay Area Bluegrass Association



Bay Area Bluegrass Association



Bay Area Bluegrass Association



Bay Area Bluegrass Association



Bay Area Bluegrass Association



Bay Area Bluegrass Association

# September Show Lineup!

**HI THERE, BLUEGRASS MUSIC FANS!** Come on out to the Johnnie Arolfo Civic Center in League City on Saturday, September 16th, for an evening of fun and music from some of the best bluegrass music in the area!

Jam rooms open @ 4:30 PM and the **STAGE SHOWS** will start at **6:00 PM**. We'll have **MUSIC**, food, door prizes for members, and we aim to provide a good time for pickers and grinners alike. (Band schedules are subject to changes as needed)

The bands : **6 PM** Strings Over Texas      **7 PM** Strings Alive      **8 PM** The Two of Us

**HERE** →

Johnnie Arolfo Civic Center, 400 West Walker, League City, Texas

← **HERE**



## HEY MEMBERS!

Be sure to stop at the **BABA** table, and get a **MEMBER** door prize ticket.

We've give **TWO** great door prizes each month as part of your membership - no extra cost to you. Just get your ticket and cross your fingers!

**THANKS!**

**P.S. You can join there, too.**



## Stringing You Along

Everything You Need to Know, You Learned in Corporate America

1. Indecision is the key to flexibility.
2. You can't tell which way the train went by looking at the track.
3. There is absolutely no substitute for a genuine lack of preparation.
4. Sometimes too much to drink is not enough.
5. The facts, although interesting, are irrelevant.
6. The careful application of terror is also a form of communication.
7. Someone who thinks logically is a nice contrast to the real world.
8. Things are more like they are today than they ever were before.
9. Anything worth fighting for is worth fighting dirty for.
10. Friends may come and go, but enemies accumulate.
11. I have seen the truth and it makes no sense.
12. If you think there is good in everybody, you haven't met everybody.

Thanks to Ed Fryday!

**GOT KIDS?**

**GRANDKIDS?**

**Electrified pals?**

Come by the  
shop and see

our **fine**  
**electric**  
**instruments**  
**and amps, too.**

Starter kits to  
professional  
grade. Check us out!



116 North Loop (610 @ Yale)

Houston, TX 77008

713-880-2188 [www.fullersguitar.com](http://www.fullersguitar.com)

## FOR ALL YOUR BLUEGRASS NEEDS

Acoustic Guitars  
Vintage Kay Basses  
Mandolins  
Banjos  
Dobros  
Accessories





**WHAT WOULD WE DO WITHOUT OUT SPONSORS? NOTHING! PLEASE SUBSIDIZE THEM WHEN YOU ARE ABLE, AND BE SURE TO THANK THEM FOR SUPPORTING THE BLUEGRASS MUSIC THAT YOU LOVE!**

**Texas Air Services, Inc**  
281-337-7763  
www.texasairservices.com



"A trusted partner in Aviation & Engineering Innovations"

**FULLER'S  
VINTAGE GUITAR**



**ROGER L. EKLUND**  
Residential Construction/Remodeling

**ROGER EKLUND**  
Owner

Estimates Available  
Design & Construction  
Longue City, Texas 77373  
reflexit@yahoo.com

40+ Years Experience

Mobile (281)543-2658



**SPACE CITY  
INSPECTIONS, LLC**

Professional Real Estate Inspectors  
www.spacecityinspections.com

**Ed Fryday**  
ASHI, TPREI, TAREI, ICC, InterNACHI, HAR  
281-636-9419



Playing Music From America's Roots

**Brazos River Pickers**

www.brazosriverpickers.com

Toe-Tapping Bluegrass and Good Old-Time Music  
Guaranteed to liven up any event!

**Rex Mann**  
Mandolin/Vocals

For Bookings - Bob Young (713)249-8115

**VACANCY**

Bluegrass Music Rising in  
NW Houston

**Bluegrass Music Knight Out  
Show and Jam** 2nd Friday Each Mo.

and Monday Night Jam: 6-9pm  
\* Location (for both): Weekley Community Center,  
8440 Greenhouse Rd., Cypress, TX 77433

2nd Saturday Jam @ Krieb Woods Nature Ctr, Tomball, TX

Contact: Tony 281-373-1777, 281-910-4396;  
Website: www.bluegrassrising.net  
Email: [tonymema@earthlink.net](mailto:tonymema@earthlink.net); and Booking  
of "Almost Heaven Bluegrass Band"



**Lonestar Bluegrass Band**



Contact Chris Hirsch 281-491-1680  
chirsch@windstream.net  
www.lonestarbluegrassband.com

**Sabine River Band**  
Available for your events



409-781-1201 [sabineriverband.com/](http://sabineriverband.com/)

**Mary E. Conn  
& Associates**



**MARY E. CONN  
& ASSOCIATES**

The College  
of Law

MARY E. CONN  
(713) 987-4390  
www.maryeconn.com

**The Pet Rooster Band**  
Diagrams with a few Variations




Available For Your Next Event:

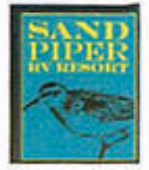
- Bluegrass Festivals
- Private parties
- Family restaurants
- Church functions
- Monthly bluegrass clinics

Joe • R. Lynn • Cathy • Doctor Phil

www.petroosterband.com • phone (979) 297.2709

**Rates & Reservations**  
[sndpiper325@aol.com](mailto:sndpiper325@aol.com)

**Sand Piper RV Park**  
Seawall Blvd & Ferry Road  
Galveston Island, Texas 77550  
409-765-9431 or 409-765-9409  
<http://sandpiperrvresort.com/>



# LOTS OF ROOM FOR MORE SPONSORS, FOLKS!

This goes out to over 300 musicians, music fans, and bluegrass music associations every month. As a sponsor, your ad also runs on the screen at the monthly shows in front of another 300 people. If the economy is great and you don't need to advertise, you can always support the arts AND claim a tax deduction - we're a 501(c)3 organization. **Help us, help you!**

Contact Rick Kirkland, [crk5820@msn.com](mailto:crk5820@msn.com) or call him at 281-488-2244 for more information.



**VACANCY**

## Imagine Salmon Lake

Imagine, if you will, a quaint little town with a main street filled with old tyme buildings. Music fills the air as bands play on the wooden stage at the bottom of a shady hill surrounded by colorful chairs and folks tap their toes in time. Across the road there is a swimming lake with a float and kids playing in the water. Nearby there is a store that sells ice cream and sodas, and several trucks parked where vendors sell a variety of fried fish, barbeque, burgers, and corndogs. There are even vendors to sell jewelry and pies under the pavilion. This covered area is a great place to visit with the bands where they offer their cds for bluegrass fans who wish to take their music home to enjoy over and over again.

This town offers a variety of amenities for visitors who can rent a cabin or a campsite where they can bring all sizes and shapes of campers, rvs, or tents. There are hills and trails to enjoy filled with interesting little buildings scattered about the place which remind one of an old country town. Some folks just come to escape for a day of music and to enjoy this down-home environment. The atmosphere is fun and relaxed as folks smile and nod to one another in greeting.

But at night, this sleepy town is always a wonder because musicians gather in groups on porches or in little houses, or beside campers to play and sing great music. This year at the 41<sup>st</sup> annual Labor Day weekend bluegrass music festival at Salmon Lake Park in Grapeland, Texas was all that and more. In fact, this year had the bluest skies and the coolest temperatures on record. This came at a time when many of us had experienced losses from hurricane Harvey. Prayers were said around the park and from the stage for those who could not come due to the damage from this storm, but those who could attend showed Harvey that Bluegrass will go on in spite of troubled times.

Most of the scheduled bands made the show like Southern Style, The Baker Family, Kristy Cox, Trinity River, Buffalo Nickel, The Malpass Brothers, Gary Waldrep, Mark Phillips and 3<sup>rd</sup> Gen, Karl Shiflett and Big Country, The Marksmen, and Lone Star Drive.

The music was great and everyone seemed to enjoy this variety of bands who performed many of our favorite songs and introduced us to new songs and artists, as well. Even though this event seems peaceful and seamless, there is an incredible amount of planning and work that goes in to such an event. Colee and David Littlefield, Scott Armstrong, Sue Knorr and many supporting volunteers and staff outperformed themselves this year. If I named all these hard workers this article would never get finished because good people from all over came together to make the festival happen. But you know who you are. There were all those unsung volunteers who shuttled guests in golf carts, ran the soundboards, setup, cleaned up, and gave up their time to make it all happen.

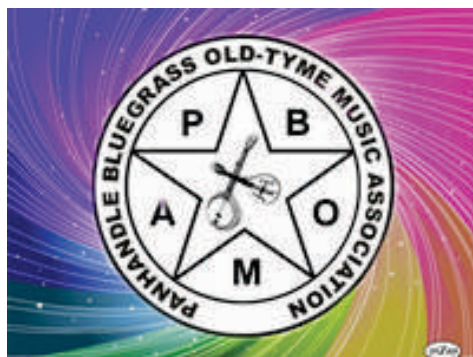
We got a well needed break from all the disaster and bad weather for a few days which is a reminder that someday there will be a place where skies are blue, music surrounds us and good friends hug and greet each other. Thanks to Floyd and Fannie and the Salmon Family for such a lovely place to experience our favorite bluegrass music. It was a little slice of heaven in Grapeland, Texas. Remember to keep bluegrass alive. Stay dry and blessed.....Pauline Eklund

**Many thanks to Pauline for the guest column this month. Pauline is a Lifetime BABA member, a guitarist in the Bluegrass band Southern Stule, and a welcome contributor to the BABA Bulletin.**



Let's all give a great big **THANKS!**

to all of the Bluegrass and Music Organizations that are making the Texas State Bluegrass Championship contests possible this year!

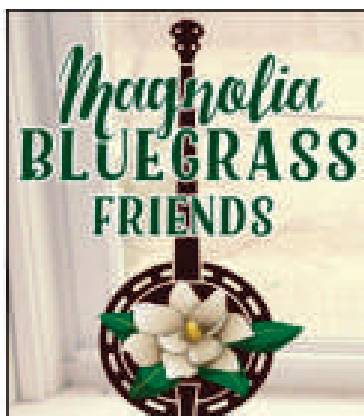


\* Sponsors in the order in which the editor could fit everything!

**Let's all give a great big **THANKS!****

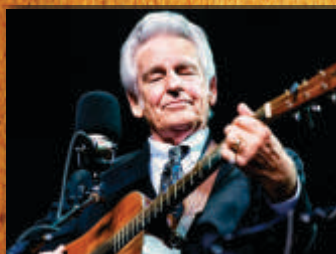
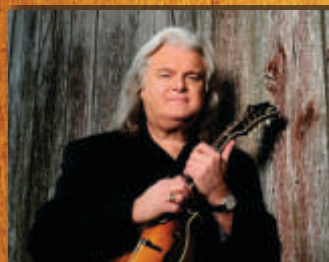
**to all of the Bluegrass and Music Organizations that are making  
the Texas State Bluegrass Championship contests possible this year!**

**- there's even more!**



**THERE'S NO SUCH THING AS TOO MANY SPONSORS!  
CONTACT RICK KIRKLAND 281-488-2244**





PRESENTED BY



FARMERS BRANCH  
*Special Events*



BluegrassHeritage.org

# FREE!

## BLOOMIN' BLUEGRASS FESTIVAL AND CHILI COOKOFF

Two days of great music, chili, and beautiful lowers under the Texas sky! Bring your blankets and lawn chairs!

**Ricky Skaggs & Kentucky Thunder**

**Jerry Douglas** *presents* **The Earls of Leicester**

**Del McCoury Band | Balsam Range**

**Sister Sadie | Molly Tuttle | The Purple Hulls**

**Texas & Tennessee | Snyder Family Band**

## FRIDAY & SATURDAY OCT 20 & 21, 2017

FARMERS BRANCH, TEXAS HISTORICAL PARK

**FESTIVAL:** Friday 4:30 to 10:00 PM

**HOURS:** Saturday 11:30 AM to 10:00 PM

**FREE Admission Kidzone \* Chili Tasting**

**Arts & Crafts Vendors**

**15 minutes from DFW Airport**

**Discounted Festival Room Rates**

**RV parking available**



Search: **fbspecialevents**

## STAY & PLAY

Travel Packages Available Online  
Great Rates and Giveaways!

## [bloominbluegrass.com](http://bloominbluegrass.com)





3 BIG DAYS - THURS-FRI-SAT

★ COUSHATTE RV RANCH ★

# PICKIN' & GRINNIN' FESTIVAL

OCTOBER 26\*27\*28\*2017

- FEATURING -



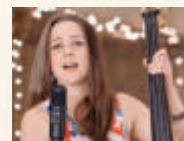
Catahoula Drive



Kristy Cox



Edgar Laudermilk



Vickie Vaughn Band



The Little Roy and Lizzy Show



Blue Mafia



Williamson Branch



His Harmony



Jeff Robertson and Friends

## ADMISSION

Weekend Pass (prepaid by Oct. 15): \$45

Weekend at the Gate: \$50

Thursday, 6-10 pm: \$15

Friday, 1-10 pm: \$20

Saturday, 1-10 pm: \$20

Call **936-697-5949** for Credit Card payment

## TUESDAY

Banjo Bingo in the Stage Room/  
Potluck Building at 2-4 pm

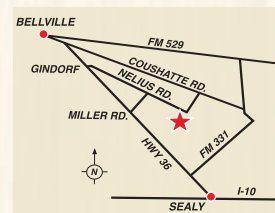
## WEDNESDAY

Potluck in the Stage Room at 6:00 pm

## CAMPING

Over 250 Full RV Sites!  
30 & 50 amp are \$20/night

2812 Nellus Rd., Bellville TX 77418  
40 Miles West of Houston TX



Texas Bluegrass Music  
at Salmon Lake Park

## ORDER FORM

### Pickin' & Grinnin' Music Festival

[www.TXBluegrassMusic.com](http://www.TXBluegrassMusic.com)

**EARLY BIRD REDUCED RATE 3-DAY PASS - \$45 (\$10 savings)**

Deadline for prepaid discount: October 15, 2017

For info contact:

**Coleebiller@aol.com • 936-697-5949**

**Scott@TXBluegrassMusic.com • 936-825-4735**

Weekend Pass by Oct. 15 \$45

Weekend at the Gate \$50

Thursday \$15

Friday \$20

Saturday \$20

Children 15 and under Free with parents

By Mail: Include order form with your  
check and mail to:

**Texas Bluegrass Music**  
**P.O. Box 1303**  
**Magnolia, TX 77353**

Pay Pal | All Credit Cards | Checks or Cash



Name: \_\_\_\_\_  
Address: \_\_\_\_\_  
Phone: \_\_\_\_\_  
I am paying for \_\_\_\_\_ tickets @ \$45 each (advance price)



## YOUR ONE STOP SHOP FOR SIGNS & GRAPHICS

- ~ DEDICATED TO QUALITY & SERVICE
- ~ COST EFFECTIVE
- ~ EXPERIENCED
- ~ ABOVE & BEYOND

### Some Of Our Products & Services

Full Color Banners • Yard Signs • Decals • Magnetics  
Aluminum Signs • Real Estate Signs • Posters • Brochures  
Window Perf • Vehicle Lettering & Wraps  
Business Cards • Flyers • Stationery • Forms • Postcards  
Street Signs • Lit Signs • Neon Signs • Dimensional Lettering  
Digital Readers • Channel Letters • Pylon Signs  
Full Color Apparel Printing • Embroidery • Engraving  
Promotional Products ...

**Need help with innovative Ideas?**

**Give us a call!**

**2212 Palmer Hwy, Texas City, Texas**

**409-945-7446**

**sales@tntsigns.net**

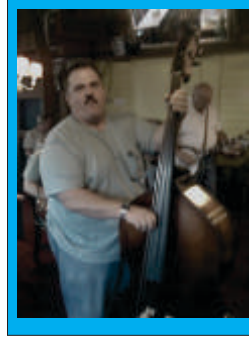
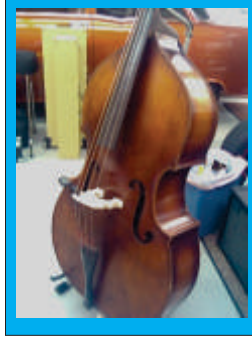
**www.tntsigns.net**



## SWAP 'N' SHOP !

What a great opportunity! How often does a vintage Kay Bass come up for sale? Don't wait too long, these sweethearts are few and far between, especially when they're as well-kept as this little darlin'.

This is a 1939 model, and includes a carrying case so you don't even have to go find one - this is a package deal for the lucky new owner. See the photos below; asking price is only \$2,000.



**Contact:**

**Eric**  
**713-724-0185**  
[rerock8019@aol.com](mailto:rerock8019@aol.com)

### \*\*\* TRAILER & EQUIPMENT FOR SALE \*\*\*

I would like to sell the equipment for \$600 at least and the trailer to hold it for \$2000. The trailer only has about 60 miles total on it. It was only used about 6 Saturdays (1st Saturday of each month) and about 5 miles each direction. There is a list of all equipment.

There are definitely 2 microphones that are meant to carry the sound from an entire group instead of having a microphone at each musician.

I prefer to be contacted via email at [betty2bigdogs@hotmail.com](mailto:betty2bigdogs@hotmail.com), but you can call 281-674-3220 and leave a message and I will call back. Photos available on request. Thanks, Betty Kaechler

Music Gear Snake 50' w/ 8 mic inputs

2 Audio Technica Mics

2 Shure Mics PG58

1 Fender P51

2 MXL Mics

1 Phonic 740G

1 Phonic 15" speakers

1 Wharfdale Pro monitor

7 Mic boom stands

8 Mic cables

2 instrument cables

2 tool boxes

1 accessory case

Equipment alone valued @ over \$600

### CALL FOR DONATIONS

Equipment repair and replacement, facility rent, security, storage, the cost of bands, the list goes on and on. Just like everything else, costs keep going up. We depend on you to keep BABA going.

We are asking for your help to keep BABA the best family entertainment at the best price to be found anywhere.

#### Fixed Monthly Expenses

Facility rent: \$644

Security: \$150

Storage: \$125

Food, and Member prizes: \$200

Bands: \$300 and up

Additional expenses: "Stuff happens"

Hey there, Bluegrass music fans! Did you go to Pearl in August? Did you MISS Pearl in August? No matter, because Pearl Bluegrass has been kind enough to share their photo slideshow with all of us.

Check out the grounds, the auto and RV parking, the stage and audience and photos of the great turnout of musicians for the Texas State Banjo Competition. You should go! It's the first weekend of the month.. which comes EVERY month! No excuses; come pick'n'play with Pearl.

<http://www.pearlbluegrass.com/NEWSmugMugFiles/NEW-PHOTOgalleries/2017-Photos/Aug-2017-Photos/n-CmRgXH>



! Ñè ǒǒǒA t ħũ5ǻW-  
pearlbluegrass

[www.pearlbluegrass.com](http://www.pearlbluegrass.com)

Pearl 1st Saturday Bluegrass Jam and Stage Show

See all of the photos from the Texas State Bluegrass Instrument Championships at:  
[https://www.facebook.com/pg/texascontest/photos/?tab=album&album\\_id=284752181949404](https://www.facebook.com/pg/texascontest/photos/?tab=album&album_id=284752181949404)

## About BABA

The Bay Area Bluegrass Association (BABA) was organized in 1986 and incorporated in 1987 under the Texas Non-Profit Corporation Act. The primary purpose of BABA is to preserve, encourage, and promote Bluegrass and Bluegrass gospel music as an American art form. BABA promotes Bluegrass through being active in community events, fund raisers, festivals, and monthly shows. BABA is a 501(c)(3) tax deductible organization; see any Director for information.

The monthly show is free to the public and features Bluegrass from the local and national scene. The stage show begins at 6:00 PM, but pickers are welcome to bring their instruments and come earlier to jam. Tasty, inexpensive food is available at the show, and there are raffles, door prizes, and Bluegrass merchandise for sale. This is a 'no alcohol' event, but there's plenty of music and great family fun!

Proceeds from donations, sponsors, memberships, sales, and raffles are used to keep the doors open and the regular shows free to the public. They also maintain and replace sound equipment, storage, security, and expense of keeping the music playing. We thank you for your attendance, your generosity, and your love of the music.





**Professional Real Estate Inspectors**

[www.spacecityinspections.com](http://www.spacecityinspections.com)

**Ed Fryday**

ASHI, TPREIA, TAREI, ICC, InterNACHI, HAR

**281-636-9419**



**MUSIC LESSONS**

Violin, Viola, Piano & Fiddle

**HALLIE REEVES**

**(713) 477-2730**



**Colee and David Littlefield**  
Festival Management/Promoters

**Salmon Lake Park**    **Coushatta Recreational Ranch**

26717 Bayou Tesch Dr.    www.TXBluegrassMusic.com    c. 936-697-5949  
Magnolia, TX 77354    coleebiller@aol.com    c. 281-259-5453



**HALLIE REEVES**

strolling "gypsy" violinist

Balloon Deliveries    Phone-A-Fiddle-Grams  
Dinners, Weddings, Reception, Etc.

**Classical Pops Music**

**713-477-2730**

**VACANCY**

Your ad could be here, reaching 300+ bluegrass music fans every month.

**ADD-ONS TO THE BLUEGRASS JAMS!**

Until we get time to reformat the whole list, this is the overflow page for some 'not-too-far-from-Houston' jams. Thanks to Tony & Nema Redding for the info!

**At the Weekley Community Center, 8440 Greenhouse Road (North @ Longenbaugh Road), Cypress, TX 77433, please make note of the following:**

**Every Monday, 6:30 to 9:00 PM, Rooms 403 and 404**

**Second Friday Show and Jam, Show is 6:15 to 8:30 PM and the Jam is 4:00 to 8:45 PM in the auditorium.**

**Contact:** [tonynema@earthlink.net](mailto:tonynema@earthlink.net) or phone 281-373-1777 or 281-910-4396

## SUPPORTING BANDS of the BAY AREA BLUEGRASS ASSOCIATION

**ALMOST HEAVEN:** Tony Redding, 281-373-1777, [tonynema@earthlink.net](mailto:tonynema@earthlink.net)  
[www.bluegrassrising.net/#!/about-our-band/clmys](http://www.bluegrassrising.net/#!/about-our-band/clmys)

**THE BLUEGRASS SOLUTION:** Mike Fuller, 281-989-8719, [mike@fullersguitar.com](mailto:mike@fullersguitar.com)  
[www.thebluegrasssolution.com](http://www.thebluegrasssolution.com)

**THE BRAZOS RIVER PICKERS:** Bob Young, 713-249-8115, [bob.young@spectracf.com](mailto:bob.young@spectracf.com)  
[www.brazosriverpickers.com](http://www.brazosriverpickers.com)

**BUFFALO NICKEL BLUEGRASS BAND:** Laney Sims, 346-901-1882,  
[laneysim55@gmail.com](mailto:laneysim55@gmail.com) [www.thebuffalonickebluegrassband.com](http://www.thebuffalonickebluegrassband.com)

**CYPRESS CREEK:** Dave Culbertson, 832-544-4373, [dculbertson@consolidated.net](mailto:dculbertson@consolidated.net)  
[www.cypresscreekband.com](http://www.cypresscreekband.com)

**THE GREER FAMILY BAND (Brenham):** Lawrence Greer, 979-454-1120,  
[lgreer@txsun.net](mailto:lgreer@txsun.net) [www.greerfamilyband.com](http://www.greerfamilyband.com)

**THE LAUGHING LIZARDS STRING BAND:** Steve Bing, 225-405-9707,  
[stevebingmusic@aol.com](mailto:stevebingmusic@aol.com) [www.laughinglizardsband.com](http://www.laughinglizardsband.com)

**LONESTAR BLUEGRASS BAND:** Chris Hirsch, 281-788-3840, [chirsch@windstream.net](mailto:chirsch@windstream.net)  
[www.lonestarbluegrassband.com](http://www.lonestarbluegrassband.com)

**PET ROOSTER:** Lynn Holbrook, 832-584-5575, [info@petroosterband.com](mailto:info@petroosterband.com)  
[www.petroosterband.com](http://www.petroosterband.com)

**SABINE RIVER BEND BAND:** Earl Cochran, [earlcochranjr@aol.com](mailto:earlcochranjr@aol.com)  
[www.sabineriverbend.com](http://www.sabineriverbend.com)

**SOUTHERN STYLE:** Rick Kirkland, 281-488-2244, [crk5820@msn.com](mailto:crk5820@msn.com)  
[www.southernstylebluegrassband.com](http://www.southernstylebluegrassband.com)

**SOWELL FAMILY PICKERS:** Cindy Sowell, 979-251-2605  
[www.thesowellfamilypickers.com](http://www.thesowellfamilypickers.com)

**SKIDAWAY RIVER:** Doug Burtchaell, 281-380-0157 [dburtchaell@comcast.net](mailto:dburtchaell@comcast.net)

**TEXAS OLDE TYME BLUEGRASS BAND:**  
[texas.olde.tyme.bluegrass.band@gmail.com](mailto:texas.olde.tyme.bluegrass.band@gmail.com) [www.totbgb.com](http://www.totbgb.com)

**THE REMNANTS BAND:** James Collins, 281-216-2749

**WHITE DOVE:** Glen Beauboeuf, 832-289-7895 [glen\\_angieb@yahoo.com](mailto:glen_angieb@yahoo.com)  
Facebook - White Dove



## Anton "Tony" Ullrich

is celebrating 45 years (1972 - 2017) of teaching folks in the greater Houston area to play Bluegrass style banjo.

Your private banjo lessons begin with an introduction to BanjerTab's unique approach to creating syncopation (that 'ahead of the beat' bounce) that you hear in the recordings of the first generation greats, who had no other form of learning than creating their banjo style 'as they went.'

Once you're familiar with BanjerTab, choose the area of playing you want to focus on: Scruggs style, full-chord back-up, mid-neck / high-neck picking, melodic style (fiddle tunes /back-up), or specific songs you have always wanted to play.

The expertise gained through 54 years of playing and 45 years of teaching is available to you now. Choose videotape lessons or come for private lessons in Houston.

Call 713-785-6655 or fax 713-532-6655



**Authorized Deering Banjo Dealer**  
**Home of the Texas Banjo**

[anton@banjerproductions.com](mailto:anton@banjerproductions.com)  
[www.5stringbanjer.com](http://www.5stringbanjer.com)

## World Music

3750 Cartwright Rd.  
**281-403-1615**

- 🌐 We teach ALL INSTRUMENTS, including voice
- 🌐 DVD Video & CD Audio Recording
- 🌐 Instrument Sales
- 🌐 Repair & Rental



*GIFT  
certificates  
available*

### YOUR AD HERE:



409-945-7446 or [sales@tntsigns.net](mailto:sales@tntsigns.net)  
2212 Palmer Hwy, Texas City, TX 77590

# A BIG BLUEGRASS THANKS! to our members

who help keep the music playing every month, and an extra shout out to those who have joined as Gold Club, Lifetime, Endowment and Foundation levels. We couldn't do this without all of you!

**Members' names are in alphabetical order**

## Gold Club Members

Mike & Pat Conwell, Gerry & Kim Herman, Lynn Holbrook, Rick & Shirley Kirkland, Linell McGallian, Ronald Moore, Marlene Payne, Laney & Shannon Sims

*Membership in the Gold Club is payable annually. We thank you for your "extra" support.*

**BABA Lifetime Members:** Brad & Dee Alford, Dave Aldrich, Scott & Diana Armstrong, Doris Arnett, Chris Bagley, Hubert & Shirley Brasseaux, Cara Cooke, Eric & Kim Corgey, Lyman & Annis Cox, Paul & Dana Cutts, Robert & Debi Duke, Bill & Joni Dusenbury, Roger & Pauline Eklund, Harry Edwards, Ruth Evans, George Franklin, Jason & Alicia Fricke, Ed & Becky Fryday, Paul & Lillie Futch, John & Jean Gardner, Bill & Geri Gatlin, J.B. & Nancy Graham, Jim & Sharon Greenlee, Doris Grigg, Chuck & Mary Pat Gunn, Robert & Elizabeth Hasserd, Tom Harrison, Ron & Anne Hayden, Arvin & Sheryl Holland, Sammy & Ottie Holloway, Jan Johnston, Stan Jones, Paul & Linda Kerr, David & Colee Littlefield, Ken & Wanda MacDonnell, Phil & Cecile Mathers, Paul & Madeline McKneely, Faber & Sandy McMullen, Patrick Milligan, Barbara Monroe, Charles & Ellen Orsburn, Mike Pettitt, Bill & Glenna Pierpont, Norman Ponder, Billy Potts, Tony & Nema Redding, Karl Reid, Jack (R.I.P.) & Carol Ritter, Tom & Sandy Roberts, Jonathan & Kristine Samuell, Billy & Terry Schmidt, Jerry & Monica Scribner, Gordon Spaulding, O.K. & Sharon Stafford, Bob & Marilyn Taylor, James & Laura Taylor, Scott Teven, Charlene Threlkeld, David Towery, Helen Vinson, Viola Wakefield, Larry Wenner, Paul Williams.

## Endowment Gift Members:

Phil & Fern Deans, Pat Lomas, Lisa Maranto



## Foundation Members:

Chris Bagley, Ed Fryday, Mike Fuller



## PICK YOUR NEWS



Well, bluegrass music fans, we have three new champions to represent the state of Texas at the National Championships. Those will be held at the 46th Annual Walnut Valley Festival, held in Windfield Kansas from the 13th to the 17th of September. Will Texas take the prize for the national **flat pick guitar**, the **bluegrass banjo**, or the **mandolin**? We sure hope so! Cross your fingers for our local talent, say an extra prayer, send good thoughts - whatever you think will help!



From the **Bluegrass Heritage Foundation**: Great news, their October festival has been nominated for the second year in a row for the Bluegrass Event of the Year! They are up against some heavy hitters, as you can see from the list of nominees:

**Bloomin' Bluegrass Festival & Chili Cook-Off** – Farmers Branch, TX

**Bluegrass & Chili Festival** – Claremore, OK

**Emelin Theatre Bluegrass Concert Series** – Mamaroneck, NY

**Pickin' in Parsons** – Parsons, WV

**25th Bluegrass Music Festival** – Ulster American Folk Park, Northern Ireland

And if that isn't impressive enough, **Alan Tompkins** of the BHF is also an IBMA nominee for the second year in a row - for **Bluegrass Broadcaster of the Year**! Double congratulations to the Bluegrass Heritage Foundation and to Alan Tompkins for all of the great work they do for bluegrass music.



# WHODUNIT AT THE LAST SHOW?

Could we put on ANY shows without our volunteers? **NO!** Tell them thank you when you pass by one of 'em.

## BANDS

**Southern Style  
Pickle Pie  
Out of the Blue**

## EMCEE

**Arvin Holland**

## SET UP & TAKE DOWN

**Roger Eklund, O.K. Stafford,  
Pat Patterson, Rick Kirkland,  
Lynn Holbrook**

## SOUND

**Roger Eklund  
James Collins**

## FOOD

**Sandi Cook  
Sheryl Holland**

## TABLE & MEMBERSHIP

**Sharon Stafford,  
Shannon Sims,  
Judy Sturgeon**



Are you and your bluegrass or bluegrass gospel band interested in playing at one of our regular monthly shows in League City?

We're always happy to have our regular great bands for repeat performances, or new groups to spice things up a bit!

Contact Lynn Holbrook at 832-584-5575 or email him at [rlynnholbrook@gmail.com](mailto:rlynnholbrook@gmail.com)

## SLOW JAM

**Laney Sims**

## PHOTOS

**Travis Posey**

# BE SURE TO THANK THEM!



# PHOTOS

**Thanks to Travis Posey for the photos from the AUGUST show.**

**SEE THEM ALL AT:**

<https://baba123.smugmug.com/Music/BABA-Show-August-19-2017/>

No WAY I can put all of the great pix on one page. See if your mug is captured on the website! Link above



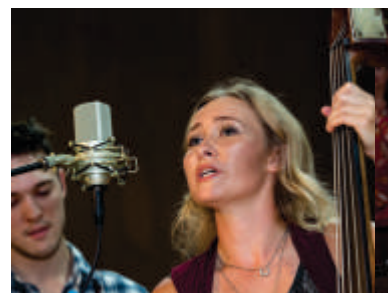
Southern Style



Pickle Pie



Out of the Blue



**Does it look like we're having fun at the BABA monthly Show and Jam? GOOD! Because we are doing exactly that. Why don't you come and join us?**



# MEMBERSHIP LEVELS

[JOIN: at the show, or online](#)

## **Individual Membership:** \$35.00 annually

You'll become a member of the BABA family and support the free monthly shows & jams. You'll receive the BABA Bulletin Newsletter monthly, admission to workshops at the monthly shows, admission to Bluegrass in the Park for BABA members & guest, updates about Bluegrass events in the area, discounts on some bluegrass shows in the area – as well as the satisfaction of supporting BABA and Bluegrass Music in Texas.

## **Family Membership:** \$50.00 annually

You'll become a member of the BABA family with all the benefits of the individual membership for you and your immediate family. You'll support the free monthly shows & jams, receive the BABA Bulletin Newsletter monthly, get admission to workshops at the monthly shows and admission to Bluegrass in the Park for BABA members & guest, get updates about Bluegrass events in the area, discounts on some bluegrass shows in the area - and the satisfaction of supporting BABA and Bluegrass Music in Texas.

## **Gold Club Membership Individual:** \$100.00 annually

Get all the benefits of the individual membership, a Gold Club Membership Name Badge, & a BABA shirt for giving that extra support to the BABA family. You'll become a member of the BABA family and support the free monthly shows & jams, receive the BABA Bulletin Newsletter monthly, get admission to workshops at the monthly shows, admission to Bluegrass in the Park for BABA members & guest, updates about Bluegrass events in the area, discounts on some bluegrass shows in the area - and the satisfaction of supporting BABA a little extra.

## **Lifetime Member Individual:** \$350.00

Get all the benefits of BABA membership for life! You'll become a member of the BABA family and support the free monthly shows & jams, and receive the BABA Bulletin Newsletter monthly. You'll get admission to workshops at the monthly shows, admission to Bluegrass in the Park for BABA members & guest, updates about Bluegrass events in the area, discounts on some bluegrass shows in the area - and the satisfaction of supporting BABA for life.

## **Lifetime Member Family:** \$500.00

Get all the benefits of BABA membership for life for you and your immediate family! You'll become a member of the BABA family and support the free monthly shows & jams, and receive the BABA Bulletin Newsletter monthly. You'll get admission to workshops at the monthly shows, admission to Bluegrass in the Park for BABA members & guest, updates about Bluegrass events in the area, discounts on some bluegrass shows in the area - and the satisfaction of supporting BABA for life.

## **Lifetime Gold Club Membership Individual:** \$1000.00

Get all the benefits of the individual membership, A Gold Club Membership Name Badge, A BABA shirt, and knowing that you are giving that extra support to the BABA family. You'll become a member of the BABA family and support the free monthly shows & jams. You'll receive the BABA Bulletin Newsletter monthly, admission to workshops at the monthly shows, admission to Bluegrass in the park for BABA members & guest, updates about Bluegrass events in the area, discounts on some bluegrass shows in the area -and the satisfaction of supporting BABA 'above and beyond'.

## **Texas Bluegrass Jams & Shows**

Combined list from Bay Area Bluegrass Association and Central Texas Bluegrass Association: If you're in Southeast to Central Texas, bring your instruments because we're going to find you a place to pick and jam.

**PLEASE notify us** at [bayareabluegrass2@aol.com](mailto:bayareabluegrass2@aol.com) if you find any errors, or have a jam that you'd like changed, added or deleted. We list by day of the week, then by town/city.

### **Mondays**

**Bluntzer:** 3<sup>rd</sup> Monday, 2-6 PM, South Texas Bluegrass Gospel Jam, G&H BBQ, 5491 Hwy 624. phone 361-387-4552  
Email [stx.bluegrass@gmail.com](mailto:stx.bluegrass@gmail.com),

**Cypress:** Every Monday 6:30-9:00 PM, Weekly Community Center, 8440 Greenhouse Rd (North @ Longenbaugh) Rooms 403 & 404 Email [tonynema@earthlink.net](mailto:tonynema@earthlink.net), phone 281-373-1777

**San Antonio:** 2<sup>nd</sup> & 4<sup>th</sup> Mondays, 7 PM, "Monday-in-a-Jam" at Grady's BBQ, 327 E. Kakoma Dr., 78216. Phone Peyton Starr 210-870-4321 or Sheryl Sultenfuss (no phone listed)

### **Tuesdays**

**Llano:** 1<sup>st</sup> & 3<sup>rd</sup> Tuesday, 7 PM, Beginner/Intermediate, 1<sup>st</sup> Presbyterian Church. Phone Jeff White 325-248-4114

**Medina:** 2<sup>nd</sup> Tuesday, All Gospel Jam, 6 PM, 1<sup>st</sup> Baptist Church. Phone Linda Barton, 830-589-2486

**Nassau Bay:** 1<sup>st</sup> Tuesday, 7-@9 PM at Fuddruckers, 2040 NASA Pkwy, 281-933-1620

**Shulenburg:** 1<sup>st</sup> & 3<sup>rd</sup> Tuesday, 6:30-9:30, Shulenburg RV Park Clubhouse. Phone Loretta Baumgarten 979-743-4388 or  
Email [camp@ShulenburgRVPark.com](mailto:camp@ShulenburgRVPark.com)

**Sugarland:** 6:30 to 9:00 PM, 1st Presbyterian Church, 502 Eldridge Rd, Sugarland. Bluegrass and accoustic instruments only. Contact [samgrice@windstream.net](mailto:samgrice@windstream.net) or 832-428-3165

### **Wednesdays**

**Austin:** 1<sup>st</sup> Wednesday, 7-10 PM, Musician's Woodshed, 3698 RR 620 South, Ste. 107, 78738, [themusicianswoodshed.com](http://themusicianswoodshed.com)

**Houston:** each Wednesday, 6-9 PM, at Hickory Hollow, 100 Heights Blvd, Houston (just south of I 10 on Heights Blvd)

**Houston:** 4<sup>th</sup> Wednesday 7PM to 9PM, Old Time Music jam, Pizza Inn, 1801 Mangum Rd, @W 18th & Mangum Rd just outside the NW Loop. Contact Steve Bing, 225-405-9707

### **Thursdays**

**Austin:** 1<sup>st</sup> & 3<sup>rd</sup> Thursdays, 7 PM, Bruce Manbridge's home. **Contact Steve Mangold for all Austin Jam info, 512-345-6155**

**Cypress:** Every 3<sup>rd</sup> & 5<sup>th</sup> Thursday, 12:30 - 3PM, Weekly Community Center, 8440 Greenhouse Rd, Cypress. Email: [tonynema@earthlink.net](mailto:tonynema@earthlink.net) or phone 281-373-1777

**Georgetown:** Every Thursday, 5:30-7:30 PM, Duke's BBQ. Email [sigi@sigi.us](mailto:sigi@sigi.us), phone 512-869-8076

**Groves:** Every Thursday, 7 PM, Allie Morvent's House, phone 409-962-5236

**Manchaca:** Every Thursday, 6:30-9 PM, Manchaca Railroad BBQ, FM 1626. Phone Dave 512-680-4433

### **Fridays**

**Bandera:** 4<sup>th</sup> Friday, 6:30 PM, Silver Sage Corral, east of Bandera. For info, phone 830-796-4969

**Carthage:** 1<sup>st</sup> Friday, 6:30 PM, Town Square. For info, phone 903-678-3857

**Cypress:** 2<sup>nd</sup> Friday, show 6:30-9:00 PM, Jam 4 - 8:45 PM, Ausitorium. Weekly Community Center, 8440 Greenhouse Rd, (North @ Longenbaugh) Rooms

403 & 404 Email [tonynema@earthlink.net](mailto:tonynema@earthlink.net), phone 281-373-1777 or check the website [www.bluegrassrising.net](http://www.bluegrassrising.net)

**Hondo:** 1<sup>st</sup> Friday, begins 11 AM, Hondo Hootenany. Hondo Community Center, 1014 18<sup>th</sup> St. Phone 830-426-2831

**Utopia:** 3<sup>rd</sup> Friday, 7 PM, Senior Citizen's Center. Phone Skip Doerr 830-966-6362

**Victoria:** 3<sup>rd</sup> Friday, Slow Jam 5-7 PM, regular jam 7-10 PM, American Legion Post #166, 1402 E. Santa Rosa. Free Admission. Email [crossroadsbluegrass@yahoo.com](mailto:crossroadsbluegrass@yahoo.com) or phone Stan Kendrick 361-935-4413 or Gary Moses 361-550-5466

### **Saturdays**

**Alvin:** Every Saturday, Texas Opry, no time given, 1720 Sealy, Admission is charged. Phone 281-432-2942

**Austin:** 2<sup>nd</sup> & 4<sup>th</sup> Saturdays, 3 to 6 PM, all levels, CTBA sponsored. 3801 Berkman Dr., 78723.

**Beaumont:** 4<sup>th</sup> Saturday, no time listed, Rosedale Baptist Church, 7110 Concord. S.E. Texas Dulcimer Friends. Phone 409-866-0848

**Bellville:** 4<sup>th</sup> Saturday, 4 PM jam & 6 PM show Jan through Sept, Coushatta RV Ranch,  
Email [coleebiller@aol.com](mailto:coleebiller@aol.com), phone 936-697-5949, website [www.TXBluegrassMusic.com](http://www.TXBluegrassMusic.com)

**Deer Park:** 2<sup>nd</sup> Saturday, 11 AM-3 PM, Troy's Music Shop, 4005 Center St. No contact listed.





Here's the rest of the jam and show schedule! 'pick' your favorite.....

### **Saturdays continued**

**Fayetteville:** 2<sup>nd</sup> Saturday, 6 PM April – Nov, Courthouse Square. Email [info@texaspickinpark.com](mailto:info@texaspickinpark.com) or see [www.texaspickinpark.com](http://www.texaspickinpark.com)

**Field Creek:** 1<sup>st</sup> Saturday, 6 PM, Field Creek Music. Field Creek is between Llano and Brady on Hwy 71. Phone Bill Tuckness 325-247-3223

**Garland:** Every Saturday March – Nov, 7:30 PM – 1 AM, between Main & State Sts. @ 6<sup>th</sup> St.

See the website: [www.meetup.com/bluegrass-142](http://www.meetup.com/bluegrass-142)

**Glen Rose:** 3<sup>rd</sup> Saturday, no time listed, Oakdale Park, Paluxy River Bluegrass Assoc., free stage show, camping encouraged. Phone John Scott 817-525-0558

**Grapevine:** 2<sup>nd</sup> Saturday, 215 Jenkins St, Grapevine from noon to 4:00 PM; Southwest Bluegrass Association

**Harwood:** 3<sup>rd</sup> Saturday, 2 -9 PM, Jam & Stage Show. 9 mi. E. of Luling, Hwy 90. Tony Conyers 512-601-1510 ; 512-940-3731

**Henderson:** 1<sup>st</sup> Saturday, 6 PM, Odd Fellows Hall. Phone 903-889-2783 or 903-566-6650

**Houston:** 2<sup>nd</sup> Saturday, 7:30 PM, Admission charged and not always bluegrass, Houston Folklore Society, West University Community Building, 6104 Auden. Phone 281-347-3235

3<sup>rd</sup> Saturday, 3-6 PM, Woodland Christian Church, 607 Rogers, North Harris County Dulcimer Society. No phone listed.

**Huntington:** Nothing going on any more. Find a new jam? email the editor at [bayareabluegrass2@aol.com](mailto:bayareabluegrass2@aol.com)

**League City:** 3rd Saturday, 5-11 PM jam, 6-9 PM show, 400 W. Walker St @ the Civic Center, Bay Area Bluegrass Assoc. Phone 281-488-2244

**Liberty Hill:** 4<sup>th</sup> Saturday, 1-6 PM, Hwy 29 West. Phone Paula 512-778-5410

**Llano:** 1<sup>st</sup> Saturday, 6 PM, Field Creek Music. Field Creek is between Llano and Brady on Hwy 71.

Phone Bill Tuckness 325-247-3223

4<sup>th</sup> Saturday Jan – Oct, 5:30 – 10:30 PM, Bluegrass in the Hill Country Jam, The Badu House.

Email [info@bluegrassinthehillcountry.org](mailto:info@bluegrassinthehillcountry.org)

**Magnolia:** 1st Saturday, Jam @ 4 PM, stage show 6-9 PM featuring 3-4 local bands. Texas Olde Tyme 1st Saturday Bluegrass Jam, West Montgomery County Community Development Center, 31355 Friendship Drive, Magnolia TX 77355-2603. Contact Bobby Stem 281-744-7652 Website: [www.totbgb.com](http://www.totbgb.com)

**Marshall:** 3<sup>rd</sup> Saturday, 7 PM Show, Lions Community Center, 1201 Louisiana St. Phone 903-935-7023

**Minden:** 3<sup>rd</sup> Saturday, 5:30 PM, Community Center. Phone 903-657-3320

**Montgomery:** 1st Saturday, The Garrett House. May be cancellations due to weather/scheduling; Contact Lonnie Clover at [lrclover@msn.com](mailto:lrclover@msn.com) before travelling. Jam starts @ 10 AM until 2 PM or so.

**Needville:** 1<sup>st</sup> Saturday, 6 PM-8 PM concert. Brazos River Pickers perform free at Brazos Bend State Park in the amphitheater. Concert is free but usual State Park Entry fees apply. Phone 281-344-0601 or website [www.brazosriverpickers.com](http://www.brazosriverpickers.com)

**Odessa:** 2nd Saturday, Noon to 6 PM, Jam and potluck dinner for pickers and for grinners (guests welcome): Acoustic only with exception for bass; Music is Bluegrass, Old Time Country, Gospel and 'other'. No smoking or alcohol. 4400 Andrews Highway @ Jesus Connection Church, Odessa Contact Pete & Claudette Stull, ph: 432-362-6944, email: [wb7amp@cablone.net](mailto:wb7amp@cablone.net)

**Pearl:** 1<sup>st</sup> Saturday, 1 PM, Pearl Bluegrass Jam & Show. Old School House on FM 183 (not US 183).

**Purmela.** RV hookups available. Phone Ronald Medart 254-865-6013 or website [www.pearlbluegrass.com](http://www.pearlbluegrass.com)

**Round Rock:** 3<sup>rd</sup> Saturday, 2-5 PM, Danny Ray's Music, 12 Chisholm Trail. Phone 512-671-8663 or website <http://dannyraysmusic.com>

**Sacul:** 4th Saturday, 6:30 PM, Opry House, Hwy 204 (25 mi. SE of Jacksonville). Phone 903-586-8484 or 409-326-4544

**Sulphur Springs:** 3<sup>rd</sup> Saturday, October through March. No time listed. 400 Como St. Phone 903-885-4078 or 903-885-7063

**Tomball:** 4<sup>th</sup> Saturday, noon - 4PM, Kleb Woods Nature Center, 20303 Draper Rd (@ Muschke Rd) Tomball 77377 Email [tonynema@earthlink.net](mailto:tonynema@earthlink.net) or phone 281-373-1777 or 281-910-4396.

**Walker, LOUISIANA:** in case you sneak across the border. 4<sup>th</sup> Saturday, no time listed, Old South Jamboree, U.S. Hwy 190. Phone 504-664-3630

**Wrightright:** 4th Saturday, 7 PM, Opry House. Phone 903-364-2539

### **Sundays**

**Austin:** every Sunday, 2 PM, Hill's Café, 4700 South Congress Avenue, Austin, Texas 78745 \*\*\*Site Change!

**Corpus Christi:** 2<sup>nd</sup> Sunday, 2 PM, Heritage Park. South Texas Bluegrass Association, Phone Bill Davis 361-387-4552

**SEE: the overflow jam info on page 13 at the bottom!**

**PLEASE notify us of any corrections, deletions or additions at [bayareabluegrass2@aol.com](mailto:bayareabluegrass2@aol.com) so we can keep the information current and correct. Always call before traveling, just in case!**



**PRESIDENT**

Rick Kirkland

**VICE-PRESIDENT**

Laney Sims

**TREASURER**

Chris Bagley

**SECRETARY**

Judy Sturgeon

**DIRECTORS**

Phil Deans

Travis Posey

Arvin Holland

Lynn Holbrook

Roger Eklund

Don Meade

**WEBMASTER**

Travis Posey

[tposey123@yahoo.com](mailto:tposey123@yahoo.com)

**EDITOR**

[bayareabluegrass2@aol.com](mailto:bayareabluegrass2@aol.com)

**BABA INFO**

281-488-2244



**TO ALL FUDDRUCKER'S JAMMERS:**

If you like the Fudd's jams but haven't been getting your monthly email reminder, shoot us an email request at: [bayareabluegrass2@aol.com](mailto:bayareabluegrass2@aol.com). If you'd like to be added to the list, just let us know!

**Join us at Fuddrucker's, NASA Parkway, on the FIRST TUESDAY of every month for dinner and jamming. Turn in a BABA 'coupon' and we will receive a percentage of your food and drink purchase price as a donation from Fudd's. Great food, great friends, great bluegrass....how good can it get?! See Rick Kirkland for a coupon at the Jam.**

**BLUEGRASS RADIO WAVES & INTERNET SITES**

**KNES - FM 99.1 SUN 2-5 PM** Fairfield, Carl Conkling

**KEOS - FM 89.1 TUES 7-9 PM** College Station, John Roths

**KPFT - FM 90.1 SUN 4-6 PM** Houston, Chris Hirsch

**KVLU - FM 91.3 SAT 7-9 PM** Beaumont

**KOOP - FM 91.7 SUN 10 AM-NOON** Austin, Sharon Sandormirsky/  
Ted Branson/ Rod Moog

**KKUS - FM104.1 9-10 AM** Tyler, Dave Rousseau

**KSHN - FM 99.9 SAT 8:30-10:30 PM** Liberty, Roy Bennett

**KSYM - FM 90.1 SUN NOON-2 PM** San Antonio, Hank Harrison

**KJIC - FM 90.5 SAT & SUN 6 AM-6 PM** Houston, Believers Bluegrass

**KAMU - FM 90.9 SAT 7-8 PM** College Station, Dave Higgs (Nashville)

[www.bayareabluegrass.org](http://www.bayareabluegrass.org) <http://www.pick-n-bow.com>

[www.bluegrassdog.com](http://www.bluegrassdog.com)

[www.bluegrassheritageradio.com](http://www.bluegrassheritageradio.com)

[www.bluegrassmusicjams.com/jam-texas.html](http://www.bluegrassmusicjams.com/jam-texas.html)

[www.centraltexasbluegrass.org](http://www.centraltexasbluegrass.org)

[www.cybergrass.com](http://www.cybergrass.com)

<http://ibma.org>

[www.southwestbluegrassclub.org](http://www.southwestbluegrassclub.org)

[www.spbgma.com](http://www.spbgma.com)

[www.TXBluegrassMusic.com](http://www.TXBluegrassMusic.com)

[www.westtexasbluegrasstraditionalmusicassociation.com](http://www.westtexasbluegrasstraditionalmusicassociation.com)



The BABA Bulletin would like feedback and Bluegrass articles from our readers. Tidbits or articles can be: an amusing quote; reviews of festivals or music conventions; behind-the-scenes reports of bands; technical; RV and campground reviews; anything that you feel would be of interest to Bluegrass enthusiasts. Articles can span more than one issue, and full credit will be given. Original, uncopyrighted work only, please and thank you!



When I see ads on TV with smiling, happy housewives using a new cleaning product, the only thing I want to buy are the meds they must be on.

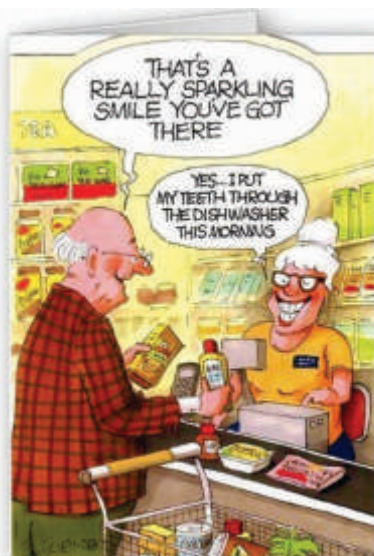


**THANKS! To Renee Fields for the Grins this month!**



<http://ibma.org/membership>

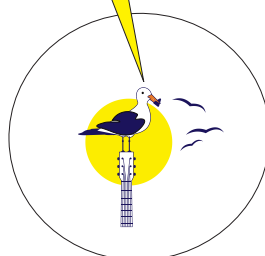
Support your local bluegrass music association. Memberships for adults start at \$40 dollars and the professional single membership is \$75.



Do you ever wake up, kiss the person sleeping beside you, and feel glad that you are alive? I just did and apparently will not be allowed on this airline again....



**Advertise here!**



### ADVERTISING RATES

#### Business Cards

\$50 per year

\$5 per issue

#### Quarter Page

\$75 per year

\$10 per issue

#### Half Page

\$150 per year

\$15 per issue

#### Full Page

\$300 per year

\$30 per issue

email for information:

[bayareabluegrass2@aol.com](mailto:bayareabluegrass2@aol.com)

## SUPPORT BLUEGRASS MUSIC

<http://www.bayareabluegrass.org/membership.html>

<https://ibma.org/membership>

<http://www.spbgma.com/membership.html>

