



Bay Area Bluegrass Association



Bay Area Bluegrass Association



Bay Area Bluegrass Association



Bay Area Bluegrass Association

# THE BABA BULLETIN

*The Bay Area Bluegrass Association*

5820 Misty Meadow, League City, TX 77573

January 2018

31 Years of Bluegrass

Volume 31, Issue 6



## PRESIDENT'S MESSAGE

Welcome to BABA 2018. We're working to have a great year with some of the best bands around with some new ones thrown in just to make it better. We have some workshops lined up. Starting in March with a fiddle workshop

BABA will be sponsoring **The Texas State Mandolin, Banjo, and Flat pick Guitar contest** again this year at the **Pearl Community Center** and with bigger prizes than last year. We're working on **Picking in the Park** in the spring too.

Thanks to everyone that pitched in and helped out with all the work it takes to put on these BABA shows last year. From booking bands, setting up and taking down the sound equipment, running the slow jam. We need help in several locations. We're wearing out the ones that work so hard. We are in need of someone to take over the kitchen duties. The girls have been doing it for 5 or 6 years now and are ready to pass it on and move on to other things. Roger and Pat could use some help with the sound equipment and Judy sure could use some help with membership and the newsletter.

BABA is only as strong as its members. Your membership and donations are what keeps the doors open. It costs around \$1500 each month in facility rent, security, band, storage, and kitchen expenses. That's without any surprise expenses. If we bring in a special band, that can be as much as \$2000 more.

All the income goes back to BABA. No one is paid for the work we do. It's all volunteer. So you see without your support there won't be any BABA shows. Pitch in and give us a hand if you can. Be sure to tell all the crew thanks for the job they're doing. A thanks goes a long way.

Let's make this another great year.  
Keep on picking.  
Rick

**WHAT? B.A.B.A. is  
31 years old??**

## INSIDE:

Upcoming Shows  
Supporting Bands  
Membership  
Pick Your News  
Stringing You Along  
Special Events  
Bluegrass Venues  
Monthly Jams  
Festival Flyers  
Swap 'n' Shop  
Bluegrass Radio  
Thinkin' & Grinnin'  
More cool stuff  
Advertise here!!



**\*\*Articles are opinions  
of the writers alone and  
do not imply agreement  
on the part of the Board  
of Directors or the  
Members.\*\***



Bay Area Bluegrass Association



Bay Area Bluegrass Association



Bay Area Bluegrass Association



Bay Area Bluegrass Association



Bay Area Bluegrass Association



Bay Area Bluegrass Association



Bay Area Bluegrass Association



Bay Area Bluegrass Association



Bay Area Bluegrass Association



Bay Area Bluegrass Association



Bay Area Bluegrass Association



Bay Area Bluegrass Association



Bay Area Bluegrass Association



Bay Area Bluegrass Association



Bay Area Bluegrass Association

Free Bluegrass Show – January 20, 2018  
Civic Center in League City, Texas



The Doucettes – 7pm



Southern Style – 6pm



Strings Over Texas – 8pm

**Howdy folks... it's time for the first Bay Area Bluegrass show of 2018 on 20-January at the League City Civic Center here in The Republic of Texas. Make plans now to attend and see three great bands including: 6pm - Southern Style; 7pm - The Doucettes and; 8pm - Strings Over Texas. As always, the jamming starts at 5pm with food service available - hope to see you there and pick on!**

**RL**





# *Fiddle Workshop*

*March 17, 2018*

*Hosted by*

*One of the best in the*

*area BABA's own*

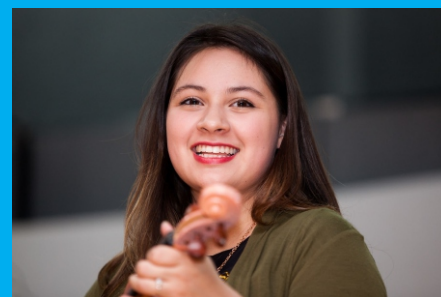
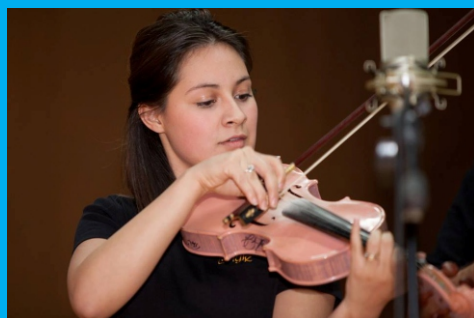
*Gloribelle Kelly*

*At the March 17th BABA show*

*Free to all BABA members*

*\$35.00 for non members*

*Here's a great Idea Join BABA for \$35  
and get all the benefits of membership and  
all the workshops free!!!!*



# January Show Lineup!

**HI THERE, BLUEGRASS MUSIC FANS!** Come on out to the Johnnie Arolfo Civic Center in League City on Saturday, October 21st, for an evening of fun and music from some of the best bluegrass music in the area!

Jam rooms open @ 4:30 PM and the STAGE SHOWS will start at **6:00 PM**. We'll have MUSIC, food, door prizes for members, and we aim to provide a good time for pickers and grinners alike. (Band schedules are subject to changes as needed)

The bands : **6 PM**

**8:30-ish PM**

**HERE** →

Johnnie Arolfo Civic Center, 400 West Walker, League City, Texas

← **HERE**



## Stringing You Along

### HEY MEMBERS!

Be sure to stop at the BABA table, and get a MEMBER door prize ticket.

We've give TWO great door prizes each month as part of your membership - no extra cost to you. Just get your ticket and cross your fingers!

THANKS!

**P.S. You can join there, too.**

**PUPIL - "Would you punish me for something I didn't do?"**

**TEACHER - "Of course not."**

**PUPIL - "Good, because I haven't done my homework."**

**Man- Do you want to dance?**

**Woman- NO**

**Man- Sorry, I think you misheard me...I said, You Look fat in those pants.**

**We spend the first twelve months of our children's lives teaching them to walk and talk and the next twelve telling them to sit down and shut up**

**3 kinds of people: those who can count and those who can't.**

**I get enough exercise just pushing my luck!**

**Light travels faster than sound. This is why some people appear bright until you hear them speak.**





**GOT KIDS?**

**GRANDKIDS?**

**Electrified pals?**

Come by the  
shop and see  
our **fine**  
**electric**  
**instruments**  
**and amps, too.**

Starter kits to  
professional  
grade. Check us out!

# FULLER'S VINTAGE GUITAR

116 North Loop (610 @ Yale)  
Houston, TX 77008  
713-880-2188 [www.fullersguitar.com](http://www.fullersguitar.com)

## FOR ALL YOUR BLUEGRASS NEEDS

Acoustic Guitars  
Vintage Kay Basses  
Mandolins  
Banjos  
Dobros  
Accessories



The  
**Gibson**  
ORIGINAL

**Beard**  
Guitars

**Martin & Co.**  
EST. 1833

**Epiphone**  
performance is our passion



**DEERING**  
QUALITY  
★ BANJOS ★

**J. W. Gallagher & Son**  
Hand Crafted Guitars



**SANTA CRUZ**  
GUITARS

**WHAT WOULD WE DO WITHOUT OUT SPONSORS? **NOTHING!** PLEASE SUBSIDIZE THEM WHEN YOU ARE ABLE, AND BE SURE TO THANK THEM FOR SUPPORTING THE BLUEGRASS MUSIC THAT YOU LOVE!**

**Texas Air Services, Inc**  
281-337-7763  
[www.texasairservices.com](http://www.texasairservices.com)



"A trusted partner in Aviation & Engineering Innovations"

**FULLER'S  
VINTAGE GUITAR**



**ROGER L. EKLUND**  
Residential Construction/Remodeling

**ROGER EKLUND**  
Owner

Estimates Available  
Design & Construction  
Longue City, Texas 77373  
[refixit@yahoo.com](mailto:refixit@yahoo.com)

40+ Years Experience

Mobile (281)543-2658



**SPACE CITY  
INSPECTIONS, LLC**

Professional Real Estate Inspectors  
[www.spacecityinspections.com](http://www.spacecityinspections.com)

**Ed Fryday**  
ASHI, TPREI, TAREI, ICC, InterNACHI, HAR  
281-636-9419



Playing Music From America's Roots

**Brazos River Pickers**

[www.brazosriverpickers.com](http://www.brazosriverpickers.com)

Toe-Tapping Bluegrass and Good Old-Time Music  
Guaranteed to liven up any event!

**Rex Mann**  
Mandolin/Vocals

For Bookings - Bob Young (713)249-8115

**VACANCY**

Bluegrass Music Rising in  
NW Houston

**Bluegrass Music Knight Out  
Show and Jam** 2nd Friday Each Mo.

and Monday Night Jam: 6-9pm  
\* Location (for both): Weekley Community Center,  
8440 Greenhouse Rd., Cypress, TX 77433

2nd Saturday Jam @ Krieb Woods Nature Ctr, Tomball, TX

Contact: Tony 281-373-1777, 281-910-4396;  
Website: [www.bluegrassrising.net](http://www.bluegrassrising.net)  
Email: [tonymema@earthlink.net](mailto:tonymema@earthlink.net); and Booking  
of "Almost Heaven Bluegrass Band"



**Lonestar Bluegrass Band**



Contact Chris Hirsch 281-491-1680  
[chirsch@windstream.net](mailto:chirsch@windstream.net)  
[www.lonestarbluegrassband.com](http://www.lonestarbluegrassband.com)

**Sabine River Band**  
Available for your events



409-781-1201 [sabineriverband.com/](http://sabineriverband.com/)

**Mary E. Conn  
& Associates**



**MARY E. CONN  
& ASSOCIATES**

The College  
of Law & Real Estate

MARY E. CONN  
(713) 987-4390  
[www.maryconn.com](http://www.maryconn.com)

**The Pet Rooster Band**  
Diagrams with a few Variations




Available For Your Next Event:


- Bluegrass Festivals
- Private parties
- Family reunions
- Church functions
- Monthly bluegrass clinics

Joe • R. Lynn • Cathy • Doctor Phil

[www.petroosterband.com](http://www.petroosterband.com) • phone (979) 297-2709

**Rates & Reservations**  
[sndpipr325@aol.com](mailto:sndpipr325@aol.com)

**Sand Piper RV Park**  
Seawall Blvd & Ferry Road  
Galveston Island, Texas 77550  
409-765-9431 or 409-765-9409  
<http://sandpiperrvresort.com/>



## **LOTS OF ROOM FOR MORE SPONSORS, FOLKS!**

This goes out to over 300 musicians, music fans, and bluegrass music associations every month. As a sponsor, your ad also runs on the screen at the monthly shows in front of another 300 people. If the economy is great and you don't need to advertise, you can always support the arts AND claim a tax deduction - we're a 501(c)3 organization. **Help us, help you!**

Contact Rick Kirkland, [crk5820@msn.com](mailto:crk5820@msn.com) or call him at 281-488-2244 for more information.



**VACANCY**





## YOUR ONE STOP SHOP FOR SIGNS & GRAPHICS

- ~ DEDICATED TO QUALITY & SERVICE
- ~ COST EFFECTIVE
- ~ EXPERIENCED
- ~ ABOVE & BEYOND

### Some Of Our Products & Services

Full Color Banners • Yard Signs • Decals • Magnetics  
Aluminum Signs • Real Estate Signs • Posters • Brochures  
Window Perf • Vehicle Lettering & Wraps  
Business Cards • Flyers • Stationery • Forms • Postcards  
Street Signs • Lit Signs • Neon Signs • Dimensional Lettering  
Digital Readers • Channel Letters • Pylon Signs  
Full Color Apparel Printing • Embroidery • Engraving  
Promotional Products ...

**Need help with innovative Ideas?**

**Give us a call!**

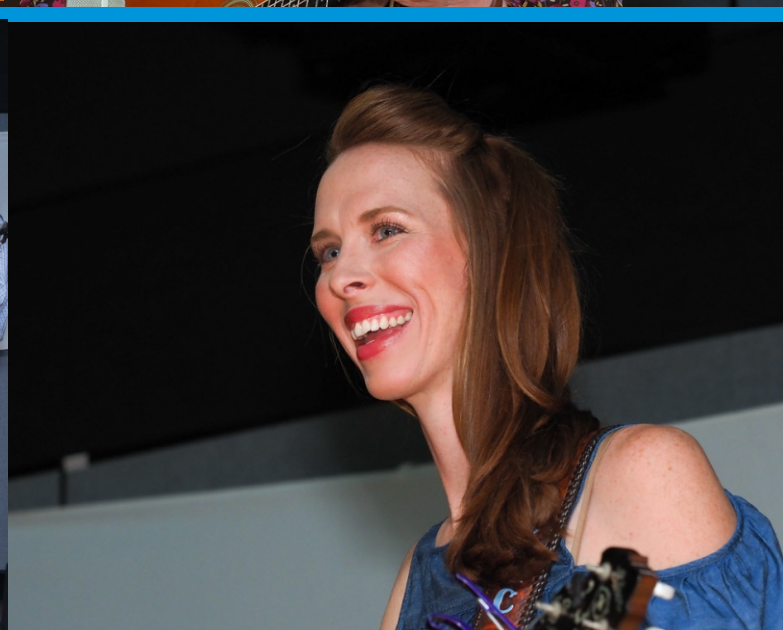
**2212 Palmer Hwy, Texas City, Texas**

**409-945-7446**

**[sales@tntsigns.net](mailto:sales@tntsigns.net)**

**[www.tntsigns.net](http://www.tntsigns.net)**





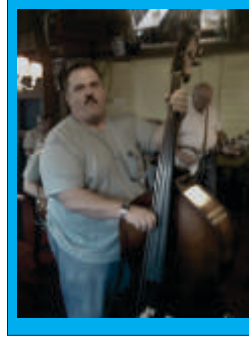
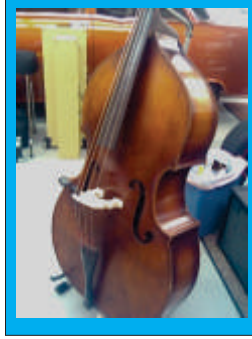
**November 2017 Great bands**



# SWAP 'N' SHOP !

What a great opportunity! How often does a vintage Kay Bass come up for sale? Don't wait too long, these sweethearts are few and far between, especially when they're as well-kept as this little darlin'.

This is a 1939 model, and includes a carrying case so you don't even have to go find one - this is a package deal for the lucky new owner. See the photos below; asking price is only \$2,000.



**Contact:**

**Eric**  
**713-724-0185**  
[rerock8019@aol.com](mailto:rerock8019@aol.com)

## \*\*\* TRAILER & EQUIPMENT FOR SALE \*\*\*

I would like to sell the equipment for \$600 at least and the trailer to hold it for \$2000. The trailer only has about 60 miles total on it. It was only used about 6 Saturdays (1st Saturday of each month) and about 5 miles each direction. There is a list of all equipment.

There are definitely 2 microphones that are meant to carry the sound from an entire group instead of having a microphone at each musician.

I prefer to be contacted via email at [betty2bigdogs@hotmail.com](mailto:betty2bigdogs@hotmail.com), but you can call 281-674-3220 and leave a message and I will call back. Photos available on request. Thanks, Betty Kaechler

Music Gear Snake 50' w/ 8 mic inputs	1 Phonic 15" speakers
2 Audio Technica Mics	1 Wharfdale Pro monitor
2 Shure Mics PG58	7 Mic boom stands
1 Fender P51	8 Mic cables
2 MXL Mics	2 instrument cables
1 Phonic 740G	2 tool boxes
	1 accessory case

Equipment alone valued @ over \$600

## About BABA

The Bay Area Bluegrass Association (BABA) was organized in 1986 and incorporated in 1987 under the Texas Non-Profit Corporation Act. The primary purpose of BABA is to preserve, encourage, and promote Bluegrass and Bluegrass gospel music as an American art form. BABA promotes Bluegrass through being active in community events, fund raisers, festivals, and monthly shows. BABA is a 501(c)(3) tax deductible organization; see any Director for information.

The monthly show is free to the public and features Bluegrass from the local and national scene. The stage show begins at 6:00 PM, but pickers are welcome to bring their instruments and come earlier to jam. Tasty, inexpensive food is available at the show, and there are raffles, door prizes, and Bluegrass merchandise for sale. This is a 'no alcohol' event, but there's plenty of music and great family fun!

Proceeds from donations, sponsors, memberships, sales, and raffles are used to keep the doors open and the regular shows free to the public. They also maintain and replace sound equipment, storage, security, and expense of keeping the music playing. We thank you for your attendance, your generosity, and your love of the music.



**Professional Real Estate Inspectors**

[www.spacecityinspections.com](http://www.spacecityinspections.com)

**Ed Fryday**

ASHI, TPREIA, TAREI, ICC, InterNACHI, HAR

**281-636-9419**



## MUSIC LESSONS

Violin, Viola, Piano & Fiddle

**HALLIE REEVES**

**(713) 477-2730**



**Colee and David Littlefield**  
*Festival Management/Promoters*

**Salmon Lake Park**    **Coushatta Recreational Ranch**

26717 Bayou Tesch Dr.    [www.TXBluegrassMusic.com](http://www.TXBluegrassMusic.com)    c. 936-697-5949  
Magnolia, TX 77354    [coleebiller@aol.com](mailto:coleebiller@aol.com)    c. 281-259-5453



**HALLIE REEVES**

strolling "gypsy" violinist

Balloon Deliveries    Phone-A-Fiddle-Grams  
Dinners, Weddings, Receptions, Etc.

**Classical Pops Music**

**713-477-2730**

# VACANCY

Your ad could be here, reaching 300+ bluegrass music fans every month.

## ADD-ONS TO THE BLUEGRASS JAMS!

Until we get time to reformat the whole list, this is the overflow page for some 'not-too-far-from-Houston' jams. Thanks to Tony & Nema Redding for the info!

At the Weekley Community Center, 8440 Greenhouse Road (North @ Longenbaugh Road), Cypress, TX 77433, please make note of the following:

**Every Monday, 6:30 to 9:00 PM, Rooms 403 and 404**

**Second Friday** Show and Jam, Show is 6:15 to 8:30 PM and the Jam is 4:00 to 8:45 PM in the auditorium.

**Contact:** [tonynema@earthlink.net](mailto:tonynema@earthlink.net) or phone 281-373-1777 or 281-910-4396



# SUPPORTING BANDS of the BAY AREA BLUEGRASS ASSOCIATION

**ALMOST HEAVEN:** Tony Redding, 281-373-1777, [tonynema@earthlink.net](mailto:tonynema@earthlink.net)  
[www.bluegrassrising.net/#!/about-our-band/clmys](http://www.bluegrassrising.net/#!/about-our-band/clmys)

**THE BLUEGRASS SOLUTION:** Mike Fuller, 281-989-8719, [mike@fullersguitar.com](mailto:mike@fullersguitar.com)  
[www.thebluegrasssolution.com](http://www.thebluegrasssolution.com)

**THE BRAZOS RIVER PICKERS:** Bob Young, 713-249-8115, [bob.young@spectracf.com](mailto:bob.young@spectracf.com)  
[www.brazosriverpickers.com](http://www.brazosriverpickers.com)

**BUFFALO NICKEL BLUEGRASS BAND:** Laney Sims, 346-901-1882,  
[laneysim55@gmail.com](mailto:laneysim55@gmail.com) [www.thebuffalonickebluegrassband.com](http://www.thebuffalonickebluegrassband.com)

**CYPRESS CREEK:** Dave Culbertson, 832-544-4373, [dculbertson@consolidated.net](mailto:dculbertson@consolidated.net)  
[www.cypresscreekband.com](http://www.cypresscreekband.com)

**THE GREER FAMILY BAND(Brenham):** Lawrence Greer, 979-454-1120,  
[lgreer@txsun.net](mailto:lgreer@txsun.net) [www.greerfamilyband.com](http://www.greerfamilyband.com)

**THE LAUGHING LIZARDS STRING BAND:** Steve Bing, 225-405-9707,  
[stevebingmusic@aol.com](mailto:stevebingmusic@aol.com) [www.laughinglizardsband.com](http://www.laughinglizardsband.com)

**LONESTAR BLUEGRASS BAND:** Chris Hirsch, 281-788-3840, [cshirsch@windstream.net](mailto:cshirsch@windstream.net)  
[www.lonestarbluegrassband.com](http://www.lonestarbluegrassband.com)

**PET ROOSTER:** Lynn Holbrook, 832-584-5575, [info@petroosterband.com](mailto:info@petroosterband.com)  
[www.petroosterband.com](http://www.petroosterband.com)

**SABINE RIVER BEND BAND:** Earl Cochran, [earlcochranjr@aol.com](mailto:earlcochranjr@aol.com)  
[www.sabineriverbend.com](http://www.sabineriverbend.com)

**SOUTHERN STYLE:** Rick Kirkland, 281-488-2244, [crk5820@msn.com](mailto:crk5820@msn.com)  
[www.southernstylebluegrassband.com](http://www.southernstylebluegrassband.com)

**SOWELL FAMILY PICKERS:** Cindy Sowell, 979-251-2605  
[www.thesowellfamilypickers.com](http://www.thesowellfamilypickers.com)

**SKIDAWAY RIVER:** Doug Burtchaell, 281-380-0157 [dburtchaell@comcast.net](mailto:dburtchaell@comcast.net)

**TEXAS OLDE TYME BLUEGRASS BAND:**  
[texas.oldetyme.bluegrass.band@gmail.com](mailto:texas.oldetyme.bluegrass.band@gmail.com) [www.totbgb.com](http://www.totbgb.com)

**THE REMNANTS BAND:** James Collins, 281-216-2749

**WHITE DOVE:** Glen Beauboeuf, 832-289-7895 [glen\\_angieb@yahoo.com](mailto:glen_angieb@yahoo.com)  
Facebook - White Dove

# A BIG BLUEGRASS THANKS!

to our members who help keep the music playing every month, and an extra shout out to those who have joined as Gold Club, Lifetime, Endowment and Foundation levels. We couldn't do this without all of you!

**Members' names are in alphabetical order**

## Gold Club Members

Doug Averitt, Mike & Pat Conwell, Mack Himel, Lynn Holbrook, Rick & Shirley Kirkland, Ronald Moore, Marlene Payne, Laney & Shannon Sims

*Membership in the Gold Club is payable annually. We thank you for your "extra" support.*

**BABA Lifetime Members:** Brad & Dee Alford, Dave Aldrich, Scott & Diana Armstrong, Doris Arnett, Chris Bagley, Hubert & Shirley Brasseaux, Cara Cooke, Eric & Kim Corgey, Lyman & Annis Cox, Paul & Dana Cutts, Robert & Debi Duke, Bill & Joni Dusenbury, Roger & Pauline Eklund, Harry Edwards, Ruth Evans, George Franklin, Jason & Alicia Fricke, Ed & Becky Fryday, Paul & Lillie Futch, John & Jean Gardner, Bill & Geri Gatlin, J.B. & Nancy Graham, Jim & Sharon Greenlee, Doris Grigg, Chuck & Mary Pat Gunn, Robert & Elizabeth Hasserd, Tom Harrison, Ron & Anne Hayden, Arvin & Sheryl Holland, Sammy & Ottie Holloway, Jan Johnston, Stan Jones, Paul & Linda Kerr, David & Colee Littlefield, Ken & Wanda MacDonnell, Phil & Cecile Mathers, Paul & Madeline McKneely, Faber & Sandy McMullen, Patrick Milligan, Barbara Monroe, Charles & Ellen Orsburn, Mike Pettitt, Bill & Glenna Pierpont, Norman Ponder, Billy Potts, Tony & Nema Redding, Karl Reid, Jack (R.I.P.) & Carol Ritter, Tom & Sandy Roberts, Jonathan & Kristine Samuell, Billy & Terry Schmidt, Jerry & Monica Scribner, Gordon Spaulding, O.K. & Sharon Stafford, Bob & Marilyn Taylor, James & Laura Taylor, Scott Teven, Charlene Threlkeld, David Towery, Helen Vinson, Viola Wakefield, Larry Wenner, Paul Williams.

## Endowment Gift Members:

Phil & Fern Deans, Pat Lomas, Lisa Maranto



## Foundation Members:

Chris Bagley, Ed Fryday, Mike Fuller



Texas State Mandolin, Banjo & Flat Pick Guitar  
Championship

June, July August

New bigger prizes (TBA)

Entry to Winfield

Held in the center of Texas at

Pearl Community Center

Limited number of entries. Enter early on line

Brought to you again by BABA, Pearl Bluegrass

And Bluegrass organizations of Texas

Please see your full list of sponsors

\*\*\*\*\*

# Anton "Tony" Ullrich

is celebrating 46 years (1972 - 2018) of teaching folks in the greater Houston area to play Bluegrass style banjo.

Your private banjo lessons begin with an introduction to BanjerTab's unique approach to creating syncopation (that 'ahead of the beat' bounce) that you hear in the recordings of the first generation greats, who had no other form of learning than creating their banjo style 'as they went.'

Once you're familiar with BanjerTab, choose the area of playing you want to focus on: Scruggs style, full-chord back-up, mid-neck / high-neck picking, melodic style (fiddle tunes /back-up), or specific songs you have always wanted to play.

The expertise gained through 54 years of playing and 45 years of teaching is available to you now. Choose videotape lessons or come for private lessons in Houston.

Call 713-785-6655 or fax 713-532-6655



**Authorized Deering Banjo Dealer**  
**Home of the Texas Banjo**

[anton@banjerproductions.com](mailto:anton@banjerproductions.com)  
[www.5stringbanjer.com](http://www.5stringbanjer.com)

## World Music

3750 Cartwright Rd.  
**281-403-1615**

- 🌐 We teach **ALL INSTRUMENTS**, including voice
- 🌐 DVD Video & CD Audio Recording
- 🌐 Instrument Sales
- 🌐 Repair & Rental



**GIFT**  
certificates  
available

### YOUR AD HERE:



409-945-7446 or [sales@tntsigns.net](mailto:sales@tntsigns.net)  
2212 Palmer Hwy, Texas City, TX 77590



# WHODUNIT AT THE LAST SHOW?

Could we put on ANY shows without our volunteers? **NO!** Tell them thank you when you pass by one of 'em.

## BANDS

**Sabine River Bend  
The Purple Hulls  
Ed Beckey & Doug Trio**

## EMCEE

**Arvin Holland**

## SET UP & TAKE DOWN

**Roger Eklund,  
Pat Patterson, Rick Kirkland,  
Lynn Holbrook**

## SOUND

**Roger Eklund and Pat Patterson**

## FOOD

**Sandi Cook and Sheryl Holland**

## TABLE & MEMBERSHIP

**Judy Sturgeon**



Are you and your bluegrass or bluegrass gospel band interested in playing at one of our regular monthly shows in League City?

We're always happy to have our regular great bands for repeat performances, or new groups to spice things up a bit!

Contact Lynn Holbrook at 832-584-5575 or email him at [rlynnholbrook@gmail.com](mailto:rlynnholbrook@gmail.com)

## SLOW JAM

**Laney Simms**

## PHOTOS

**Travis Posey**

# BE SURE TO THANK THEM!

# MEMBERSHIP LEVELS

[JOIN: at the show, or online](#)

## **Individual Membership** \$35.00 annually

You'll become a member of the BABA family and support the free monthly shows & jams. You'll receive the BABA Bulletin Newsletter monthly, admission to workshops at the monthly shows, admission to Bluegrass in the Park for BABA members & guest, updates about Bluegrass events in the area, discounts on some bluegrass shows in the area – as well as the satisfaction of supporting BABA and Bluegrass Music in Texas.

## **Family Membership:** \$50.00 annually

You'll become a member of the BABA family with all the benefits of the individual membership for you and your immediate family. You'll support the free monthly shows & jams, receive the BABA Bulletin Newsletter monthly, get admission to workshops at the monthly shows and admission to Bluegrass in the Park for BABA members & guest, get updates about Bluegrass events in the area, discounts on some bluegrass shows in the area and the satisfaction of supporting BABA and Bluegrass Music in Texas.

## **Gold Club Membership Individual:** \$100.00 annually

Get all the benefits of the individual membership, a Gold Club Membership Name Badge, & a BABA shirt for giving that extra support to the BABA family. You'll become a member of the BABA family and support the free monthly shows & jams, receive the BABA Bulletin Newsletter monthly, get admission to workshops at the monthly shows, admission to Bluegrass in the Park for BABA members & guest, updates about Bluegrass events in the area, discounts on some bluegrass shows in the area - and the satisfaction of supporting BABA a little extra.

## **Lifetime Member Individual** \$350.00

Get all the benefits of BABA membership for life! You'll become a member of the BABA family and support the free monthly shows & jams, and receive the BABA Bulletin Newsletter monthly. You'll get admission to workshops at the monthly shows, admission to Bluegrass in the Park for BABA members & guest, updates about Bluegrass events in the area, discounts on some bluegrass shows in the area and the satisfaction of supporting BABA for life.

## **Lifetime Member Family:** \$500.00

Get all the benefits of BABA membership for life for you and your immediate family! You'll become a member of the BABA family and support the free monthly shows & jams, and receive the BABA Bulletin Newsletter monthly. You'll get admission to workshops at the monthly shows, admission to Bluegrass in the Park for BABA members & guest, updates about Bluegrass events in the area, discounts on some bluegrass shows in the area - and the satisfaction of supporting BABA for life.

## **Lifetime Gold Club Membership Individual** \$1000.00

Get all the benefits of the individual membership, A Gold Club Membership Name Badge, A BABA shirt, and knowing that you are giving that extra support to the BABA family. You'll become a member of the BABA family and support the free monthly shows & jams. You'll receive the BABA Bulletin Newsletter monthly, admission to workshops at the monthly shows, admission to Bluegrass in the park for BABA members & guest, updates about Bluegrass events in the area, discounts on some bluegrass shows in the area and the satisfaction of supporting BABA 'above and beyond'.

## **Texas Bluegrass Jams & Shows**

Combined list from Bay Area Bluegrass Association and Central Texas Bluegrass Association: If you're in Southeast to Central Texas, bring your instruments because we're going to find you a place to pick and jam.

**PLEASE notify us** at [bayareabluegrass2@aol.com](mailto:bayareabluegrass2@aol.com) if you find any errors, or have a jam that you'd like changed, added or deleted. We list by day of the week, then by town/city.

### **Mondays**

**Bluntzer:** 3<sup>rd</sup> Monday, 2-6 PM, South Texas Bluegrass Gospel Jam, G&H BBQ, 5491 Hwy 624. phone 361-387-4552  
Email [stx.bluegrass@gmail.com](mailto:stx.bluegrass@gmail.com),

**Cypress:** Every Monday 6:30-9:00 PM, Weekly Community Center, 8440 Greenhouse Rd (North @ Longenbaugh) Rooms 403 & 404 Email [tonynema@earthlink.net](mailto:tonynema@earthlink.net), phone 281-373-1777

**San Antonio:** 2<sup>nd</sup> & 4<sup>th</sup> Mondays, 7 PM, "Monday-in-a-Jam" at Grady's BBQ, 327 E. Kakoma Dr., 78216. Phone Peyton Starr 210-870-4321 or Sheryl Sultenfuss (no phone listed)

### **Tuesdays**

**Llano:** 1<sup>st</sup> & 3<sup>rd</sup> Tuesday, 7 PM, Beginner/Intermediate, 1<sup>st</sup> Presbyterian Church. Phone Jeff White 325-248-4114

**Medina:** 2<sup>nd</sup> Tuesday, All Gospel Jam, 6 PM, 1<sup>st</sup> Baptist Church. Phone Linda Barton, 830-589-2486

**Nassau Bay:** 1<sup>st</sup> Tuesday, 7-@9 PM at Fuddruckers, 2040 NASA Pkwy, 281-933-1620

**Shulenburg:** 1<sup>st</sup> & 3<sup>rd</sup> Tuesday, 6:30-9:30, Shulenburg RV Park Clubhouse. Phone Loretta Baumgarten 979-743-4388 or  
Email [camp@ShulenburgRVPark.com](mailto:camp@ShulenburgRVPark.com)

**Sugarland:** 6:30 to 9:00 PM, 1st Presbyterian Church, 502 Eldridge Rd, Sugarland. Bluegrass and accoustic instruments only. Contact [samgrice@windstream.net](mailto:samgrice@windstream.net) or 832-428-3165

### **Wednesdays**

**Austin:** 1<sup>st</sup> Wednesday, 7-10 PM, Musician's Woodshed, 3698 RR 620 South, Ste. 107, 78738, [themusicianswoodshed.com](http://themusicianswoodshed.com)

**Houston:** each Wednesday, 6-9 PM, at Hickory Hollow, 100 Heights Blvd, Houston (just south of I 10 on Heights Blvd)

**Houston:** 4<sup>th</sup> Wednesday 7PM to 9PM, Old Time Music jam, Pizza Inn, 1801 Mangum Rd, @W 18th & Mangum Rd just outside the NW Loop. Contact Steve Bing, 225-405-9707

### **Thursdays**

**Austin:** 1<sup>st</sup> & 3<sup>rd</sup> Thursdays, 7 PM, Bruce Manbridge's home. **Contact Steve Mangold for all Austin Jam info, 512-345-6155**

**Cypress:** Every 3rd & 5th Thursday, 12:30 - 3PM, Weekly Community Center, 8440 Greenhouse Rd, Cypress. Email: [tonynema@earthlink.net](mailto:tonynema@earthlink.net) or phone 281-373-1777

**Georgetown:** Every Thursday, 5:30-7:30 PM, Duke's BBQ. Email [sigi@sigi.us](mailto:sigi@sigi.us), phone 512-869-8076

**Groves:** Every Thursday, 7 PM, Allie Morvent's House, phone 409-962-5236

**Manchaca:** Every Thursday, 6:30-9 PM, Manchaca Railroad BBQ, FM 1626. Phone Dave 512-680-4433

### **Fridays**

**Bandera:** 4<sup>th</sup> Friday, 6:30 PM, Silver Sage Corral, east of Bandera. For info, phone 830-796-4969

**Carthage:** 1<sup>st</sup> Friday, 6:30 PM, Town Square. For info, phone 903-678-3857

**Cypress:** 2<sup>nd</sup> Friday, show 6:30-9:00 PM, Jam 4 - 8:45 PM, Ausitorium. Weekly Community Center, 8440 Greenhouse Rd, (North @ Longenbaugh) Rooms 403 & 404 Email [tonynema@earthlink.net](mailto:tonynema@earthlink.net), phone 281-373-1777 or check the website [www.bluegrassrising.net](http://www.bluegrassrising.net)

**Hondo:** 1<sup>st</sup> Friday, begins 11 AM, Hondo Hootenany. Hondo Community Center, 1014 18<sup>th</sup> St. Phone 830-426-2831

**Utopia:** 3<sup>rd</sup> Friday, 7 PM, Senior Citizen's Center. Phone Skip Doerr 830-966-6362

**Victoria:** 3<sup>rd</sup> Friday, Slow Jam 5-7 PM, regular jam 7-10 PM, American Legion Post #166, 1402 E. Santa Rosa. Free Admission. Email [crossroadsbluegrass@yahoo.com](mailto:crossroadsbluegrass@yahoo.com) or phone Stan Kendrick 361-935-4413 or Gary Moses 361-550-5466

### **Saturdays**

**Alvin:** Every Saturday, Texas Opry, no time given, 1720 Sealy, Admission is charged. Phone 281-432-2942

**Austin:** 2<sup>nd</sup> & 4<sup>th</sup> Saturdays, 3 to 6 PM, all levels, CTBA sponsored. 3801 Berkman Dr., 78723.

**Beaumont:** 4<sup>th</sup> Saturday, no time listed, Rosedale Baptist Church, 7110 Concord. S.E. Texas Dulcimer Friends. Phone 409-866-0848

**Bellville:** 4<sup>th</sup> Saturday, 4 PM jam & 6 PM show Jan through Sept, Coushatta RV Ranch,  
Email [coleebiller@aol.com](mailto:coleebiller@aol.com), phone 936-697-5949, website [www.TXBluegrassMusic.com](http://www.TXBluegrassMusic.com)

**Deer Park:** 2<sup>nd</sup> Saturday, 11 AM-3 PM, Troy's Music Shop, 4005 Center St. No contact listed.



**DON'T STOP NOW, WE'RE JUST GETTING STARTED! CONTINUED ON NEXT PAGE.....**



Here's the rest of the jam and show schedule! 'pick' your favorite.....

**Saturdays continued**

**Fayetteville:** 2<sup>nd</sup> Saturday, 6 PM April – Nov, Courthouse Square. Email [info@texaspickinpark.com](mailto:info@texaspickinpark.com) or see [www.texaspickinpark.com](http://www.texaspickinpark.com)

**Field Creek:** 1<sup>st</sup> Saturday, 6 PM, Field Creek Music. Field Creek is between Llano and Brady on Hwy 71. Phone Bill Tuckness 325-247-3223

**Garland:** Every Saturday March – Nov, 7:30 PM – 1 AM, between Main & State Sts. @ 6<sup>th</sup> St.

See the website: [www.meetup.com/bluegrass-142](http://www.meetup.com/bluegrass-142)

**Glen Rose:** 3<sup>rd</sup> Saturday, no time listed, Oakdale Park, Paluxy River Bluegrass Assoc., free stage show, camping encouraged. Phone John Scott 817-525-0558

**Grapevine:** 2<sup>nd</sup> Saturday, 215 Jenkins St, Grapevine from noon to 4:00 PM; Southwest Bluegrass Association

**Harwood:** 3<sup>rd</sup> Saturday, 2 -9 PM, Jam & Stage Show. 9 mi. E. of Luling, Hwy 90. Tony Conyers 512-601-1510 ; 512-940-3731

**Henderson:** 1<sup>st</sup> Saturday, 6 PM, Odd Fellows Hall. Phone 903-889-2783 or 903-566-6650

**Houston:** 2<sup>nd</sup> Saturday, 7:30 PM, Admission charged and not always bluegrass, Houston Folklore Society, West University Community Building, 6104 Auden. Phone 281-347-3235

3<sup>rd</sup> Saturday, 3-6 PM, Woodland Christian Church, 607 Rogers, North Harris County Dulcimer Society. No phone listed.

**Huntington:** Nothing going on any more. Find a new jam? email the editor at [bayareabluegrass2@aol.com](mailto:bayareabluegrass2@aol.com)

**League City:** 3rd Saturday, 5-11 PM jam, 6-9 PM show, 400 W. Walker St @ the Civic Center, Bay Area Bluegrass Assoc. Phone 281-488-2244

**Liberty Hill:** 4<sup>th</sup> Saturday, 1-6 PM, Hwy 29 West. Phone Paula 512-778-5410

**Llano:** 1<sup>st</sup> Saturday, 6 PM, Field Creek Music. Field Creek is between Llano and Brady on Hwy 71.

Phone Bill Tuckness 325-247-3223

4<sup>th</sup> Saturday Jan – Oct, 5:30 – 10:30 PM, Bluegrass in the Hill Country Jam, The Badu House.

Email [info@bluegrassinthehillcountry.org](mailto:info@bluegrassinthehillcountry.org)

**Magnolia:** 1st Saturday, Jam @ 4 PM, stage show 6-9 PM featuring 3-4 local bands. Texas Olde Tyme 1st Saturday Bluegrass Jam, West Montgomery County Community Development Center, 31355 Friendship Drive, Magnolia TX 77355-2603. Contact Bobby Stem 281-744-7652 Website: [www.totbgb.com](http://www.totbgb.com)

**Marshall:** 3<sup>rd</sup> Saturday, 7 PM Show, Lions Community Center, 1201 Louisiana St. Phone 903-935-7023

**Minden:** 3<sup>rd</sup> Saturday, 5:30 PM, Community Center. Phone 903-657-3320

**Montgomery:** 1st Saturday, The Garrett House. May be cancellations due to weather/scheduling; Contact Lonnie Clover at [lrclover@msn.com](mailto:lrclover@msn.com) before travelling. Jam starts @ 10 AM until 2 PM or so.

**Needville:** 1<sup>st</sup> Saturday, 6 PM-8 PM concert. Brazos River Pickers perform free at Brazos Bend State Park in the amphitheater. Concert is free but usual State Park Entry fees apply. Phone 281-344-0601 or

website [www.brazosriverpickers.com](http://www.brazosriverpickers.com)

**Odessa:** 2nd Saturday, Noon to 6 PM, Jam and potluck dinner for pickers and for grinners (guests welcome): Acoustic only with exception for bass; Music is Bluegrass, Old Time Country, Gospel and 'other'. No smoking or alcohol. 4400 Andrews Highway @ Jesus Connection Church, Odessa Contact Pete & Claudette Stull, ph: 432-362-6944, email: [wb7amp@cablone.net](mailto:wb7amp@cablone.net)

**Pearl:** 1<sup>st</sup> Saturday, 1 PM, Pearl Bluegrass Jam & Show. Old School House on FM 183 (not US 183).

**Purmela.** RV hookups available. Phone Ronald Medart 254-865-6013 or website [www.pearlbluegrass.com](http://www.pearlbluegrass.com)

**Round Rock:** 3<sup>rd</sup> Saturday, 2-5 PM, Danny Ray's Music, 12 Chisholm Trail. Phone 512-671-8663 or website <http://dannyraysmusic.com>

**Sacul:** 4th Saturday, 6:30 PM, Opry House, Hwy 204 (25 mi. SE of Jacksonville). Phone 903-586-8484 or 409-326-4544

**Sulphur Springs:** 3<sup>rd</sup> Saturday, October through March. No time listed. 400 Como St. Phone 903-885-4078 or 903-885-7063

**Tomball:** 4<sup>th</sup> Saturday, noon - 4PM, Kleb Woods Nature Center, 20303 Draper Rd (@ Muschke Rd) Tomball 77377

Email [tonynema@earthlink.net](mailto:tonynema@earthlink.net) or phone 281-373-1777 or 281-910-4396.

**Walker, LOUISIANA:** in case you sneak across the border. 4<sup>th</sup> Saturday, no time listed, Old South Jamboree, U.S. Hwy 190. Phone 504-664-3630

**Wrightright:** 4th Saturday, 7 PM, Opry House. Phone 903-364-2539

**Sundays**

**Austin:** every Sunday, 2 PM, Hill's Café, 4700 South Congress Avenue, Austin, Texas 78745 \*\*\*Site Change!

**Corpus Christi:** 2<sup>nd</sup> Sunday, 2 PM, Heritage Park. South Texas Bluegrass Association, Phone Bill Davis 361-387-4552

**PLEASE notify us of any corrections, deletions or additions at [bayareabluegrass2@aol.com](mailto:bayareabluegrass2@aol.com) so we can keep the information current and correct. Always call before traveling, just in case!**





**November 2017  
Monthly show  
Thanks Travis Posey**



# **PRESIDENT**

Rick Kirkland

# **VICE-PRESIDENT**

Laney Sims

# **TREASURER**

# **SECRETARY**

Judy Sturgeon

# **DIRECTORS**

Phil Deans

Travis Posey

Arvin Holland

Lynn Holbrook

Roger Eklund

Don Meade

# **WEBMASTER**

Travis Posey

[tposey123@yahoo.com](mailto:tposey123@yahoo.com)

# **EDITOR**

[bayareabluegrass2@aol.com](mailto:bayareabluegrass2@aol.com)

# **BABA INFO**

281-488-2244



# **TO ALL FUDDRUCKER'S JAMMERS:**

If you like the Fudd's jams but haven't been getting your monthly email reminder, shoot us an email request at: [bayareabluegrass2@aol.com](mailto:bayareabluegrass2@aol.com). If you'd like to be added to the list, just let us know!

**Join us at Fuddrucker's, NASA Parkway, on the FIRST TUESDAY of every month for dinner and jamming. Turn in a BABA 'coupon' and we will receive a percentage of your food and drink purchase price as a donation from Fudd's. Great food, great friends, great bluegrass....how good can it get?! See Rick Kirkland for a coupon at the Jam.**

# **BLUEGRASS RADIO WAVES & INTERNET SITES**

**KNES - FM 99.1 SUN 2-5 PM Fairfield, Carl Conkling**

**KEOS - FM 89.1 TUES 7-9 PM College Station, John Roths**

**KPFT - FM 90.1 SUN 4-6 PM Houston, Chris Hirsch**

**KVLU - FM 91.3 SAT 7-9 PM Beaumont**

**KOOP - FM 91.7 SUN 10 AM-NOON Austin, Sharon Sandormirsky/  
Ted Branson/ Rod Moog**

**KKUS - FM104.1 9-10 AM Tyler, Dave Rousseau**

**KSHN - FM 99.9 SAT 8:30-10:30 PM Liberty, Roy Bennett**

**KSYM - FM 90.1 SUN NOON-2 PM San Antonio, Hank Harrison**

**KJIC - FM 90.5 SAT & SUN 6 AM-6 PM Houston, Believers Bluegrass**

**KAMU - FM 90.9 SAT 7-8 PM College Station, Dave Higgs (Nashville)**

[www.bayareabluegrass.org](http://www.bayareabluegrass.org) <http://www.pick-n-bow.com>

[www.bluegrassdog.com](http://www.bluegrassdog.com)

[www.bluegrassheritageradio.com](http://www.bluegrassheritageradio.com)

[www.bluegrassmusicjams.com/jam-texas.html](http://www.bluegrassmusicjams.com/jam-texas.html)

[www.centraltexasbluegrass.org](http://www.centraltexasbluegrass.org)

[www.cybergrass.com](http://www.cybergrass.com)

<http://ibma.org>

[www.southwestbluegrassclub.org](http://www.southwestbluegrassclub.org)

[www.spbgma.com](http://www.spbgma.com)

[www.TXBluegrassMusic.com](http://www.TXBluegrassMusic.com)

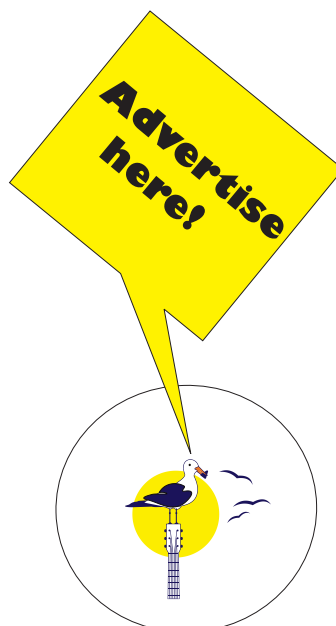
[www.westtexasbluegrasstraditionalmusicassociation.com](http://www.westtexasbluegrasstraditionalmusicassociation.com)



The BABA Bulletin would like feedback and Bluegrass articles from our readers. Tidbits or articles can be: an amusing quote; reviews of festivals or music conventions; behind-the-scenes reports of bands; technical; RV and campground reviews; anything that you feel would be of interest to Bluegrass enthusiasts. Articles can span more than one issue, and full credit will be given. Original, uncopyrighted work only, please and thank you!



## Thinkin' and Grinnin'



<http://ibma.org/membership>

Support your local bluegrass music association. Memberships for adults start at \$40 dollars and the professional single membership is \$75.

### ADVERTISING RATES

#### Business Cards

\$50 per year

\$5 per issue

#### Quarter Page

\$75 per year

\$10 per issue

#### Half Page

\$150 per year

\$15 per issue

#### Full Page

\$300 per year

\$30 per issue

email for information:

[bayareabluegrass2@aol.com](mailto:bayareabluegrass2@aol.com)

## SUPPORT BLUEGRASS MUSIC

<http://www.bayareabluegrass.org/membership.html>

<https://ibma.org/membership>

<http://www.spbgma.com/membership.html>

