

The BABA Bulletin

Oct. 2022

THE BAY AREA BLUEGRASS ASSOCIATION

Bluegrassing
since 1987



Well, fall is just around the corner.

I can't wait for the holidays & eating all those holiday treats, so let's all get together & enjoy some bluegrass Music at the BABA monthly show. The jamming starts around 3:30 and the stage show starts at 6:30.

This month, a longtime BABA favorite will be performing. Get ready to hear our featured band David Culbertson and the Old Dirt Road. They will be playing after a new band called 21 String Salute. Let's make them all feel welcome! Please come on out, join us & bring a friend.

Man, if you missed last month, you missed one of the best "All Star groups" we've had in a long time. The Bluegrass Pals were great. I watched the entire set, which is something I rarely do. The videos of that show had lots of hits & positive comments. What a show! Thanks to Southern Style for opening the show.

**A special thanks to you, the members and fans of bluegrass!
Remember BABA is nothing without you.
We need your help!**

Your membership and donations are the key to keeping the show going and free.

Without you we wouldn't be here.

So, bring a friend, tell your neighbors to come out and enjoy the show

BTW let the BABA staff know how much you enjoy the show.

A thanks goes a long way to all the unpaid volunteers & board members.

See you at the show!

Rick





A special thanks to you;
The members and fans of bluegrass!

Remember BABA is nothing without you.

We need your help!

Your membership and donations are the key
to keeping the show going and free.

Without you we wouldn't be here.

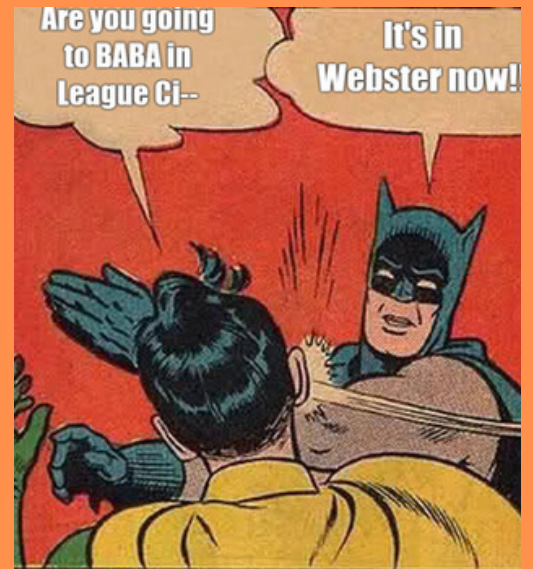
So, bring a friend, tell your neighbors to come out
and enjoy the show!

Don't forget to let the BABA staff know how much
you enjoy the show.

A thanks goes a long way to all the unpaid volunteers
and board members!



NOW SHOWING



Now located at:
Webster Civic Center
300 Pennsylvania Ave

21 String Salute

* and



Old Dirt Road

*last Month's
BABA Bands*



Bluegrass Pals



*Thank
you!*

BABA Joins Other Texas Bluegrass Associations to Donate to Kentucky Relief Fund



Flood-ravaged Kentucky needs our help, folks.

That's why BABA joins a philanthropic effort coordinated by Southwest Bluegrass Club to donate to Kentucky Relief.

Families and communities in Kentucky were devastated by recent July 2022 floods.

We feel a kinship to Kentucky, the birthplace of our beloved music.

As fellow bluegrassers, we'd like to lend a hand.

Bluegrass associations throughout our state will collect funds to go directly to aid providers in Kentucky communities.

As you donate, you receive an email receipt for your charitable donation.

Donate today with a credit card through Southwest Bluegrass Club's secure donation site:

<https://www.southwestbluegrassclubdfw.org/tx-bluegrass-4-kentucky-relief>

WHO DUNNIT AT THE LAST SHOW

Bluegrass Pals
and
Southern Style

Roger Eklund
Rick Kirkland
John Doyle

Elaine Bergernon
Arvin Holland and
Sheryl Holland

BRANDS
ROCK
OVER
FOOD
SHOW

Rick Kirkland

Roger Eklund

Ron Moore and
Betty Moore

Richard
Schaffhausen

EMCEE
SOUND
TABLE
PHOTO

*Thank
you!*

"Once-A-Week BABA Jam"!

Luka's Barbeque and Steakhouse welcomes us to come jam on Tuesdays... EVERY WEEK!!!

We arrive at 6pm, for those who want to eat, and the actual jam starts at 7pm.

We love to see you there.

Luka's Barbeque and Steakhouse

17052 SATURN LN, HOUSTON, TX 77058

(281) 286-8669



JAMMERS

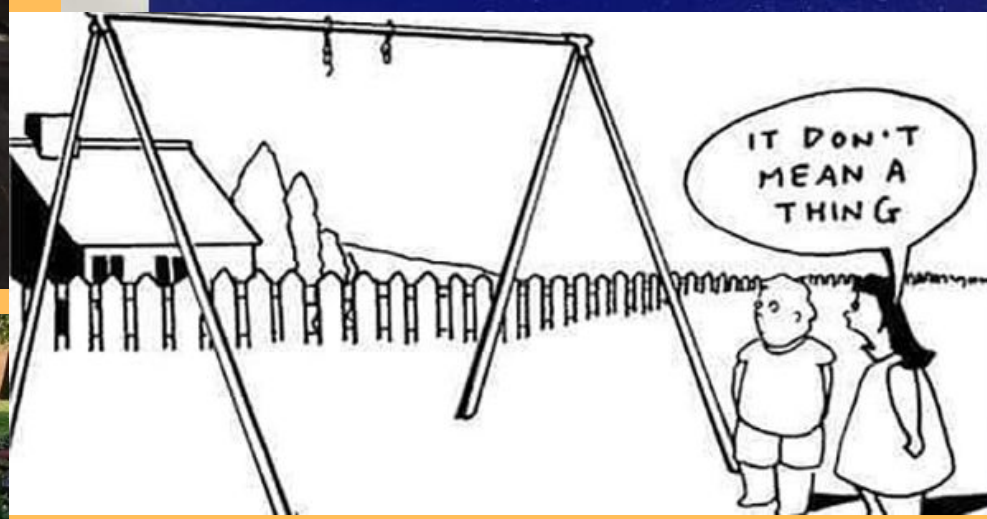


I DON'T CARE IF YOU'RE A DOCTOR,
AN ENGINEER OR A ROCKET SCIENTIST



NOBODY GETS THE PRODUCE BAG
OPEN ON THE FIRST TRY

IF THE EARTH WAS FLAT,
CATS WOULD HAVE PUSHED
EVERYTHING OFF IT BY NOW



"Your cousin Earl just parked his
mobile home outside the house."

Young people listen to vinyl nowadays, Dad.
You're probably too old to have heard of it.

BABA pics from the September Show





yea!!!!



I love
this song...



Membership Levels

JOIN: Online or at the show

Individual Membership: \$35.00 annually

You'll become a member of the BABA family and support the free monthly shows & jams. You'll receive the BABA Bulletin Newsletter monthly, admission to workshops at the monthly shows, admission to Bluegrass in the Park for BABA members & guest, updates about Bluegrass events in the area, discounts on some bluegrass shows in the area – as well as the satisfaction of supporting BABA and Bluegrass Music in Texas.

Family Membership: \$50.00 annually

You'll become a member of the BABA family with all the benefits of the individual membership for you and your immediate family. You'll support the free monthly shows & jams, receive the BABA Bulletin Newsletter monthly, get admission to workshops at the monthly shows and admission to Bluegrass in the Park for BABA members & guest, get updates about Bluegrass events in the area, discounts on some bluegrass shows in the area - and the satisfaction of supporting BABA and Bluegrass Music in Texas.

Gold Club Membership Individual: \$100.00 annually

Get all the benefits of the individual membership, a Gold Club Membership Name Badge, & a BABA shirt for giving that extra support to the BABA family. You'll become a member of the BABA family and support the free monthly shows & jams, receive the BABA Bulletin Newsletter monthly, get admission to workshops at the monthly shows, admission to Bluegrass in the Park for BABA members & guest, updates about Bluegrass events in the area, discounts on some bluegrass shows in the area - and the satisfaction of supporting BABA a little extra.

Lifetime Member Individual: \$350.00

Get all the benefits of BABA membership for life! You'll become a member of the BABA family and support the free monthly shows & jams, and receive the BABA Bulletin Newsletter monthly. You'll get admission to workshops at the monthly shows, admission to Bluegrass in the Park for BABA members & guest, updates about Bluegrass events in the area, discounts on some bluegrass shows in the area - and the satisfaction of supporting BABA for life.

Lifetime Member Family: \$500.00

Get all the benefits of BABA membership for life for you and your immediate family! You'll become a member of the BABA family and support the free monthly shows & jams, and receive the BABA Bulletin Newsletter monthly. You'll get admission to workshops at the monthly shows, admission to Bluegrass in the Park for BABA members & guest, updates about Bluegrass events in the area, discounts on some bluegrass shows in the area - and the satisfaction of supporting BABA for life.

Lifetime Gold Club Membership Individual: \$1000.00

Get all the benefits of the individual membership, A Gold Club Membership Name Badge, A BABA shirt, and knowing that you are giving that extra support to the BABA family. You'll become a member of the BABA family and support the free monthly shows & jams. You'll receive the BABA Bulletin Newsletter monthly, admission to workshops at the monthly shows, admission to Bluegrass in the park for BABA members & guest, updates about Bluegrass events in the area, discounts on some bluegrass shows in the area -and the satisfaction of supporting BABA 'above and beyond'.

A BIG BLUEGRASS THANKS!

to our members who help keep the music playing every month, and an extra shout out to those who have joined as Gold Club, Lifetime, Endowment and Foundation levels.

We couldn't do this without all of you!

Foundation Members:

Ed Fryday, Mike Fuller, Chris Bagley

Endowment Gift Members:

Phil & Fern Deans, Pat Lomas, Lisa Maranto

Members' names are in alphabetical order

Gold Club Members

**Doug Averitt, Mike & Pat Conwell, Dr. John Doyle, Mack Himel, Rick Kirkland family, Robert Manning, Neil Maxson, Ronald Moore, Marlene Payne,
Laney & Shannon Sims**

Membership in the Gold Club is payable annually. We thank you for your "extra" support.

BABA Lifetime Members

Brad & Dee Alford, Dave Aldrich, Scott & Diana Armstrong, Doris Arnett, Chris Bagley, Hubert & Shirley Brasseaux, Cara Cooke, Eric & Kim Corgey, Lyman & Annis Cox, Paul & Dana Cutts, Robert & Debi Duke, Bill & Joni Dusenbury, Roger & Pauline Eklund, Harry Edwards, John Ellisor, Ruth Evans, George Franklin, Jason & Alicia Fricke, Ed & Becky Fryday, Paul & Lillie Futch, John & Jean Gardner, Bill & Geri Gatlin, J.B. & Nancy Graham, Jim & Sharon Greenlee, Doris Grigg, Chuck & Mary Pat Gunn, Robert & Elizabeth Hasserd, Tom Harrison, Ron & Anne Hayden, Lynn Holbrook, Arvin & Sheryl Holland, Sammy & Ottie Holloway, Jan Johnston, Stan Jones, Paul & Linda Kerr, David & Colee Littlefield, Ken & Wanda MacDonnell, Phil & Cecile Mathers, Paul & Madeline McKneely, Faber & Sandy McMullen, Patrick Milligan, Barbara Monroe, Charles & Ellen Orsburn, Mike Petitt, Bill & Glenna Pierpont, Norman Ponder, Billy Potts, Jackson Ray, Tony & Nema Redding, Karl Reid, Jack (R.I.P.) & Carol Ritter, Tom & Sandy Roberts, Jonathan & Kristine Samuell, Billy & Terry Schmidt, Jerry & Monica Scribner, Gordon Spaulding, O.K. & Sharon Stafford, Bob & Marilyn Taylor, James & Laura Taylor, Scott Teven, Charlene Threlkeld, David Towery, Helen Vinson, Viola Wakefield, Larry Wenner, Paul Williams.

**Now that the BABA shows are up and running, we
still need you to volunteer!
Just grab Rick and say,
“Hey! I want to help!
Please tell me what to do.”**

**Membership
BABA table
Sound
Greeters
Set-up**

Member drawing Prizes

Backup Photographer

Take-down

Billing (Ads &

Membership)

Pass the Bucket

Food Table



About BABA

The Bay Area Bluegrass Association (BABA) was organized in 1986 and incorporated in 1987 under the Texas Non-Profit Corporation Act. The primary purpose of BABA is to preserve, encourage, and promote Bluegrass and Bluegrass gospel music as an American art form. BABA promotes Bluegrass through being active in community events, fund raisers, festivals, and monthly shows. BABA is a 501(c)(3) tax deductible organization; see any Director for information. The monthly show is free to the public and features Bluegrass from the local and national scene. The stage show begins at 6:00 PM, but pickers are welcome to bring their instruments and come earlier to jam.

Tasty, inexpensive food is available at the show, and there are raffles, door prizes, and Bluegrass merchandise for sale. This is a 'no alcohol' event, but there's plenty of music and great family fun!

Proceeds from donations, sponsors, memberships, sales, and raffles are used to keep the doors open and the regular shows free to the public. They also maintain and replace sound equipment, storage, security, and expense of keeping the music playing.

We thank you for your attendance, your generosity, and your love of the music.

SUPPORTING BANDS of the BAY AREA BLUEGRASS ASSOCIATION

ALMOST HEAVEN: Tony Redding, 281-910-4396 tonynema10@gmail.com
www.bluegrassrising.net/#!/about-our-band/c1mys

THE BLUEGRASS SOLUTION: Mike Fuller, 281-989-8719, mike@fullersguitar.com ;
www.thebluegrasssolution.com

THE BRAZOS RIVER PICKERS: Bob Young, 713-249-8115, bob.young@spectracf.com ;
www.brazosriverpickers.com

THE GREER FAMILY BAND (Brenham): Lawrence Greer, 979-454-1120, lgreer@txsun.net ;
www.greerfamilyband.com

THE LAUGHING LIZARDS STRING BAND: Steve Bing, 225-405-9707, stevebingmusic@aol.com ;
www.laughinglizardsband.com

LONESTAR BLUEGRASS BAND: Chris Hirsch, 281-788-3840, cshirsch@windstream.net ;
www.lonestarbluegrassband.com

OLD DIRT ROAD BAND: Dave Culbertson, 832-544-4373 ; dculbertson@consolidated.net

OUT OF THE BLUE SEABROOK: Greg English, 830-387-9156

PET ROOSTER: Lynn Holbrook, 832-584-5575, info@petroosterband.com ;
www.petroosterband.com

SABINE RIVER BEND BAND: Earl Cochran, earlcochranjr@aol.com ; www.sabineriverbend.com

SKIDAWAY RIVER: Doug Burtchaell, 281-380-0157 dburtchaell@comcast.net

SOUTHERN STYLE: Rick Kirkland, 281-488-2244, crk5820@msn.com ;
www.southernstylebluegrassband.com

SOWELL FAMILY PICKERS: Cindy Sowell, 979-251-2605 www.thesowellfamilypickers.com

STRINGS OVER TEXAS: Lynn Holbrook, 832-584-5575

WHITE DOVE: Glen Beauboeuf, 832-289-7895 glen_angieb@yahoo.com ; Facebook - White Dove

Interested in adding your band to this list?

Contact Lynn Holbrook at 832-584-5575

or email him at rlynnholbrook@gmail.com

AUSTIN AREA, CTBA

- **EVERY SUNDAY, CTBA**, 3-5 PM, at Oskar Blues Brewery, 10420 Metric Blvd Ste 150, Austin
- **(NEW 2022)Every Sunday** 12:00-3:00 Suds Monkey Brewery and Pizzeria (12024 US-290, Austin 78737) in the breezy, open-air space of Suds Monkey's new location between Austin and Dripping Springs. For more information, see Suds Monkey's Facebook page or email CTBA representative, Natalie Turner.
- **3rd Thursday,,** 7:15-9:45 pm 9900 west Palmer Lane Musician's Woodshed

For more information about Central Texas Jams and shows there is a daily calendar of other events at <https://centraltexasbluegrass.org/Bluegrass-Events>

BLANCO

- **1st Saturday**, 12-3 PM, 2nd Mile Recreation Center, 512 Pecan, Blanco, TX, (830) 554-0006

BLUFFDALE

- **Every Thursday** 6:30-10 PM, Cedar Point Music Club, Cedar Point Community Building. 2481 & 205 Bluffdale, TX

BOERNE

- **2nd & 4th Saturday**, Boerne Bluegrass Jam, at The AgriCultural, Boerne, 1-3 PM, 102 City Park Road, Info: contact Dave Moore (210) 846-9745, dmboerne@gvtc.com

CLEBURNE

- **3rd Saturday**, jam begins at 2 p.m. and show at 5 p.m., provided by Paluxy River Bluegrass Assn., held at Chisholm Trail Museum, 101 Chisholm Trail, Cleburne, TX 76033, paluxyriverbluegrass@gmail.com

CLEAR LAKE

- **Tuesdays** 7 to 9 pm Luka's BBQ and Steakhouse 17052 SATURN LN, HOUSTON
Call (281) 286-8669

CYPRESS

- **Every Monday**, 6-8:30 PM, Good Shepherd United Methodist Church, 20155 Cypresswood Dr. Tony and Nema: Email tonynema10@gmail.com, phone 281-910-4396
- **2nd Friday**, Bluegrass Music Knight Out and Jam
Weekley Community Center, 8440 Greenhouse Road
Jam starts at 4 pm. Show starts at 6:30 pm.
Contact Tony and Nema for more info, Phone: 281-910-4396, Email: tonynema10@gmail.com
Facebook: Cypress Bluegrass Rising Group, <https://www.facebook.com/BluegrassRising/>

ENLOE, TX

- **3rd Saturday** Bluegrass Jam, 2-6:30 PM.
Sweet Enloe Opry, Lexie Street

Jams and Shows last updated August 2022

2/3

FAYETTEVILLE

A little patience, please!

- **2nd Saturday (Jan.-Nov.),** Fayetteville Picking Park, Jam, 1-? PM, on the Courthouse Square, Slow Jam - 1 PM, Lou-Lou Barbour (979) 451-0067 or banjobooklady@yahoo.com

GARLAND, TX

- **Saturdays,** (April-Nov.) Garland Town Square Jams (held outside), 6 PM-?, 200 N. 5th St.

GLEN ROSE

- **3rd Saturday,** Bluegrass Stage Show, hosted by Paluxy River Bluegrass Assn./Oakdale Park, txartisan.com for details.

GRAPEVINE

- **1st Saturday,** Bluegrass at the Settlement, noon-4 PM, picking, show and shopping, 206 W. Hudgins, southwestbluegrassclub@dfw.org
- **2nd Saturday** Southwest Bluegrass Club Meeting, Show and Jam 11:00 AM to 3:00 PM at the First Baptist Church, 113 E. Texas St. www.southwestbluegrassclub.org

HOUSTON

- **2nd Saturday,** 7:30 PM Houston Folklore Society, Admission charged, *folk music*, West University Community Building, 6104 Auden. Phone 281-347-3235 houstonfolkmusic.org
- **3rd Saturday** North Harris County Dulcimer Society. see website. 2:00 PM, Advent Luthern Church, 5820 Pinemont Dr, www.nhcads.com
- **Wednesdays** Buffalo Grille Bluegrass Jam, 6-8PM, 4080 Bissonet St; All skill levels welcome

LLANO

- **3rd Saturday,** Open Bluegrass Jam, 1-4 PM, at the Fuel Coffee House, 106 E. Main.

PEARL

- **1st Saturday, (2nd Sat in Sept)** Pearl Bluegrass Jam & Stage Show, Jam all day/night, Stage show 12-10 PM, food and RV hookups available. Pearl Community Center, on FM 183, 7 mi South of Purmela, info@pearlbluegrass.com; www.pearlbluegrass.com

SAN ANTONIO

- **Every Monday,** "In-A-Jam" Bluegrass Jam Session, 2-4 PM, at The BBQ Station, 1610 N. E. Loop 410, (210) 824-9191 HerbKnowlson or Sheryl Sultenfuss
- **Every Tuesday,** "Jam Session, 6:30-8:30 PM, Everyone welcome, mostly country, some bluegrass, The BBQ Station, 1610 N. E. Loop 410, More info: Ssultenfuss@gmail.com, (210) 824-9191

SHULENBERG

- **1st & 3rd Tuesday,** Jam, 6:30 PM, at Schulenburg RV Park Community Center, 65 N. Kessler Ave., Laretta Baumgarten - (979) 743-4388, camp@schulenburgrvpark.com

SUGARLAND

- **Every Tuesday** 6:30 to 9:00 PM, 1st Presbyterian Church, 502 Eldridge Rd, Sugarland. Bluegrass and acoustic instruments only. Contact samgrice@windstream.net or 832-428-3165

TOMBALL

- **4th Saturday**, Jam, 1-4 PM, Kleb Woods Nature Center, 20303 Draper Rd, Tony and Nema, Call 281-910-4396, email tonynema10@gmail.com

WEBSTER

- **3rd Saturday (Jan. - Nov.)**, Bay Area Bluegrass Jam & Free Bluegrass Show, Jam - 3:30 PM, Show - 6:30 PM, Webster Civic Center,, 311 Pennsylvania Ave., (281) 316-4108, (281) 332-1826

WOODVILLE

- **4th Saturday**, Triple Creek RV Park in Woodville, Where the bluegrass jam is indoors and there's food and fellowship galore. You will feel right at home with the fun folks and musicians. Triplecreekrv.com

Please remember to be wise and always email or call ahead to make sure they're meeting before you use precious gas.

In addition pay attention to *when the list was updated*.

Checking all the jams is time-consuming, and not everyone calls or emails back, which is why it isn't updated constantly... It's also why this is the first update since many jams shut down from covid restrictions.

A very special thanks to Carol Vaughn for her hard work calling everyone for updates.

You are awesome!!.... PE

GOT KIDS?
GRANDKIDS?
Electrified pals?

Come by the
shop and see
our fine
electric
instruments
and amps, too.
Starter kits to
professional
grade.
Check us out!



116 North Loop

Houston, TX 77008

713-880-2188 www.fullersguitar.com

For all your Bluegrass Needs

Acoustic Guitars

Vintage Kay Basses

Mandolins

Banjos

Dobros

Accessories



Eastman
HANDCRAFTED
GUITARS & MANDOLINS

Epiphone

Fender

Gibson

GRETSCH

KRAMER

Squier
by Fender

Taylor
QUALITY GUITARS

Martin & Co.
EST. 1833

Rickenbacker



12325 Scarsdale Blvd, Ste A
Houston, TX 77089

281-484-9492

www.libertychiro.us

Advertise to 300+ people every issue!

ADVERTISING RATES

Business Cards

\$50 per year

\$5 per issue

Half Page

\$150 per year

\$15 per issue

Quarter Page

\$75 per year

\$10 per issue

Full Page

\$300 per year

\$30 per issue

email for information: bayareabluegrass2@aol.com

Anton "Tony" Ullrich

is celebrating 50 years (1972 - 2022) of teaching folks in the greater Houston area to play Bluegrass style banjo.

Your private banjo lessons begin with an introduction to BanjerTab's unique approach to creating syncopation (that 'ahead of the beat' bounce) that you hear in the recordings of the first generation greats, who had no other form of learning than creating their banjo style 'as they went.'

Once you're familiar with BanjerTab, choose the area of playing you want to focus on: Scruggs style, full-chord back-up, mid-neck / high-neck picking, melodic style (fiddle tunes /back-up), or specific songs you have always wanted to play.

The expertise gained through 56 years of playing and 47 years of teaching is available to you now.

Choose videotape lessons or come for private lessons in Houston.

Call 713-785-6655 or fax 713-532-6655

**Authorized Deering Banjo
Dealer
Home of the Texas Banjo**



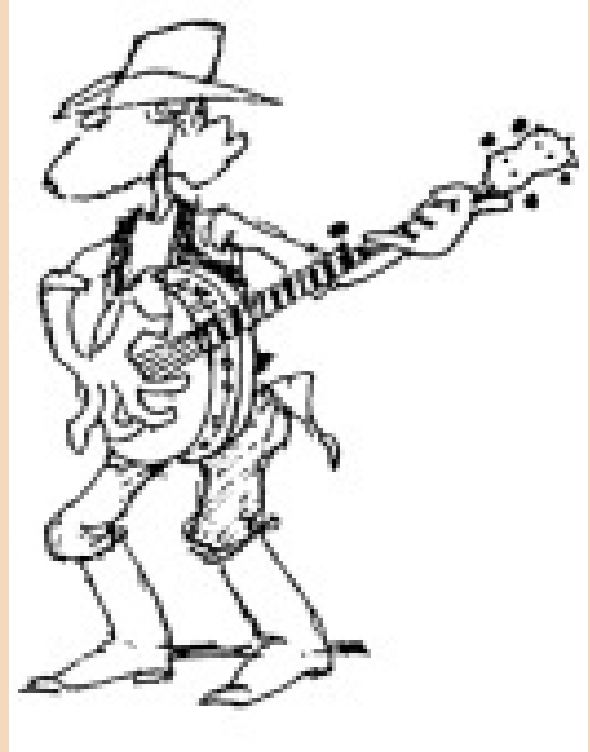
World Music
3750 Cartwright Rd.
281-403-1615

- We teach **ALL INSTRUMENTS**, including voice
- DVD Video & CD Audio Recording
- Instrument Sales
- Repair & Rental

GIFT certificates available

worldmusicsugarland.com

NA 1992 FM 1992 Cartwright Hwy 6



anton@banjerproductions.com
www.5stringbanjer.com

Texas Air Services, Inc

281-337-7763

www.texasairservices.com



"A trusted partner in Aviation & Engineering Innovations"

SPACE CITY INSPECTIONS, LLC

Professional Real Estate Inspectors

www.spacecityinspections.com

Ed Fryday

ASHI, TPREIA, TAREI, ICC, InterNACHI, HAR

281-636-9419

Bluegrass Music Rising in NW Houston

Bluegrass Music Knight Out Show and Jam 2nd Friday Each Mo.;

and Monday Night Jam: 6-9:pm

* Location (for both): Weekley Community Center, 8440 Greenhouse Rd., Cypress, TX 77433

4th Saturday Jam @ Kleb Woods Nature Ctr, Tomball, TX

Contact: Tony 281-373-1777, 281-910-4396;

Website: www.bluegrassrising.net

Email: tonynema@earthlink.net; and Booking of "Almost Heaven Bluegrass Band"

Mary E. Conn & Associates

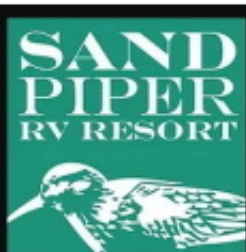
MARY E. CONN & ASSOCIATES



MARY ELIZABETH CONN
(713) 385-4190
Licensed in Texas and California

mec@maryconn.com
440 Lexington Street, Suite 100
Houston, Texas 77002
www.maryconn.com

The City of Webster



SPACE CITY INSPECTIONS, LLC

Professional Real Estate Inspectors

www.spacecityinspections.com

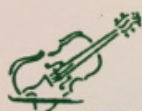
Ed Fryday

ASHI, TPREIA, TAREI, ICC, InterNACHI, HAR

281-636-9419

Southern Style

Southern Style Bluegrass Band: 281-488-2244



MUSIC LESSONS

Violin, Viola, Piano & Fiddle

HALLIE REEVES

(713) 477-2730

FULLER'S VINTAGE GUITAR

Playing Music From America's Roots

Brazos River Pickers

www.brazosriverpickers.com

Toe-Tapping Bluegrass and Good Old-Time Music
Guaranteed to liven up any event!

Rex Mann

Mandolin/Vocals

For Bookings - Bob Young (713)249-8115

Lonestar Bluegrass Band



Contact Chris Hirsch 281-491-1680
chirsch@windstream.net

www.lonestarbluegrassband.com

ROGER L. EKLUND

Residential Construction/Remodeling

ROGER EKLUND

Owner

Estimates Available
Design & Construction
League City, Texas 77573
refixit@yahoo.com

40+ Years Experience

Mobile (281)543-2658

Sabine River Band

Available for your events

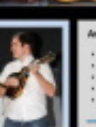


409-781-1201

sabineriverband.com/

The Pet Rooster Band

Bluegrass with a few variations



Available for Your Next Event

- Bluegrass festivals
- Private parties
- Family reunions
- Church functions
- Monthly bluegrass shows

Like Us On FB

facebook

Jay • R. Lynn • Cathy • Doctor Phil

www.petroosterband.com • phone (979) 297.2709

Rates & Reservations

sndpiper325@aol.com

Sand Piper RV Park

Seawall Blvd & Ferry Road

Galveston Island, Texas 77550

409-765-9431 or 409-765-9409

<http://sandpiperrvresort.com/>



HALLIE REEVES

strolling "gypsy" violinist

Balloon Deliveries Phone-A-Fiddle-Grams
Dinners, Weddings, Receptions, Etc.

Classical Pops Music

713-477-2730

Liberty CHIROPRACTIC

12325 Scarsdale Blvd, Ste A
Houston, TX 77089

281-484-9492

www.libertychiro.us